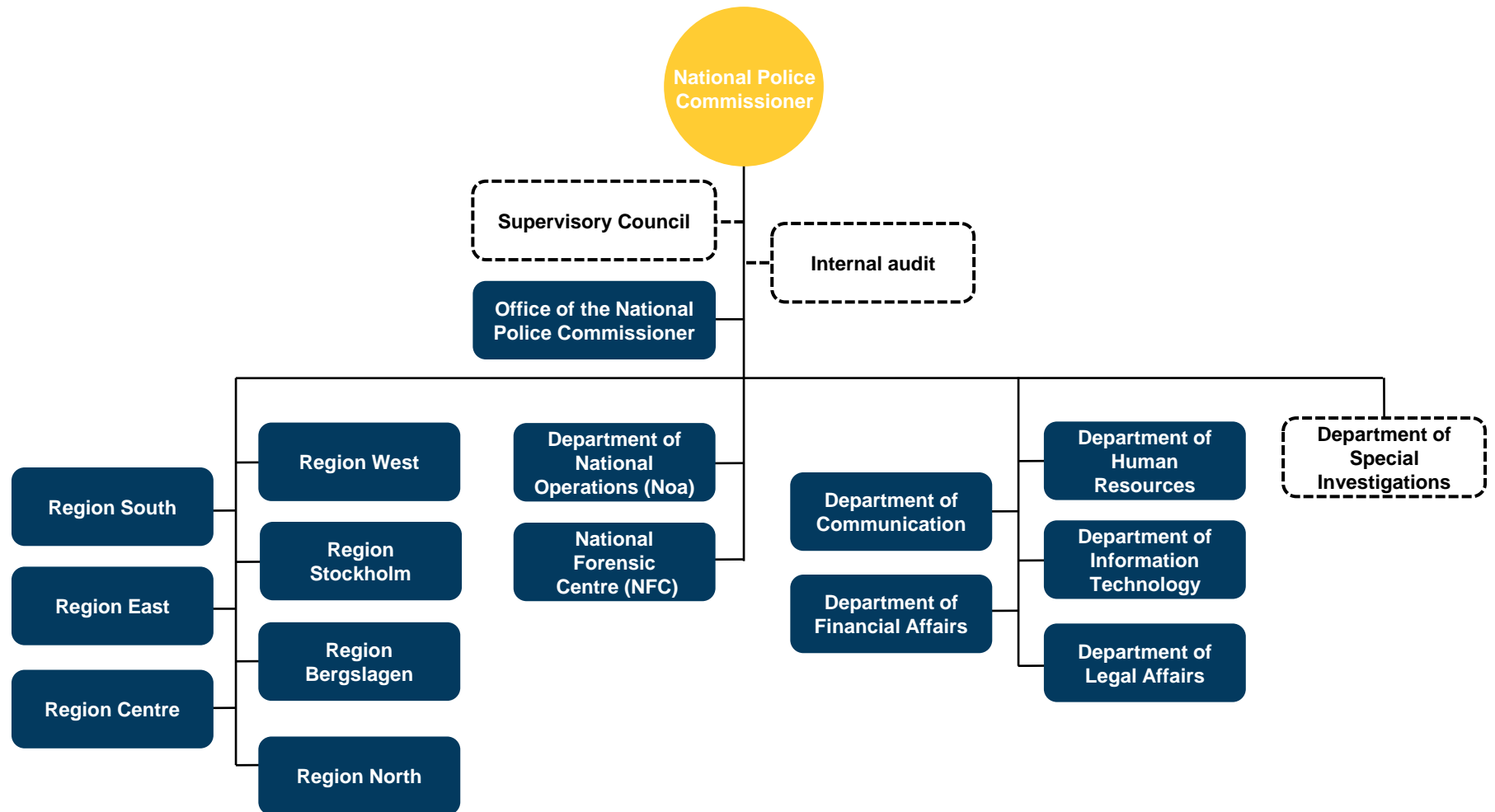
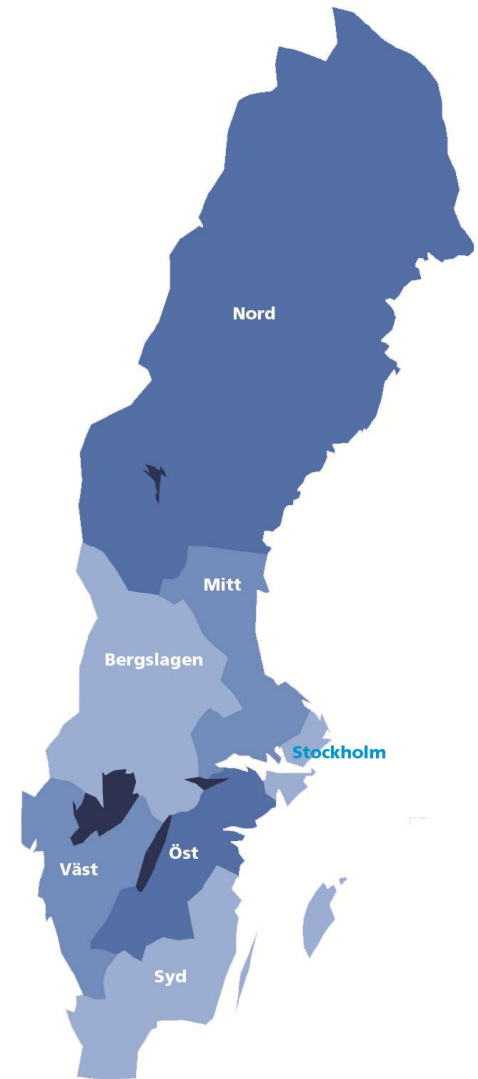


# The Swedish Police Authority





**Polisen**



# ASYLUM APPLICATIONS JAN – NOV 2015

<i>Citizenship</i>	<i>Number</i>	<i>of which male</i>	<i>of which female</i>	<i>of which children (unaccompanied minors included)</i>	<i>of which unaccompanied minors *1</i>
SYRIA	48 276	31333	16943	16265	3573
AFGHANISTAN	36 261	30095	6166	26497	20947
IRAQ	18 852	13933	4919	5314	996
STATELESS	7 206	4361	2845	2535	512
ERITREA	7 050	4608	2442	2648	1912
SOMALIA	5 127	3370	1757	2434	1951
IRAN	4 056	2922	1134	769	143
ALBANIA	2 482	1687	795	814	196
KOSOVO	1 720	1120	600	516	21
ETHIOPIA	1 560	1135	425	923	817
<b>Total:</b>	<b>149 028</b>	<b>105503</b>	<b>43525</b>	<b>63568</b>	<b>32180</b>

<i>Year-month</i>	<i>Decisions</i>	<i>of which granted</i>	<i>of which rejected</i>	<i>of which dublin *1</i>	<i>of which others *2</i>	<i>Average handling time</i>	<i>Proportion of total number of granted decisions</i>	<i>Proportion of total number of granted decisions with dublin and others excluded</i>
<b>Total</b>	<b>52883</b>	<b>29861</b>	<b>8493</b>	<b>6939</b>	<b>7590</b>	<b>226</b>	<b>56%</b>	<b>78%</b>

