



Aleppo: Installation of shelter kits in Nubul town for IDPs from Afrin.

Due to the current crisis in Afrin, thousands of people have been displaced. Shelter sector partners continue to provide shelter support to the displaced people.

© UNHCR/H, Marou

MAJOR HIGHLIGHTS

- The Shelter Sector partners continue to respond to Eastern Ghouta and Afrin emergencies. So far a total of 41,007 people have been assisted in eight different sites hosting IDPs from Eastern Ghouta and 2,556 people have been assisted in Nubul and Zahara with different shelter interventions.
- Most of the IDP sites that host IDPs from Eastern Ghouta are still overcrowded with an average occupancy rate over 200%.
- Site preparation works at Herjelleh and Karnak IDP sites are completed and once WASH works are implemented, tents will be installed. The collective capacity of these two sites is 6,150 individuals. The capacity does not account the hangar at Karnak.
- The Technical Working Group continues to review three guidelines corresponding to three main shelter emergency responses, and they are: Rehabilitation of Collective Shelters, Upgrading of Private Un-finished Buildings, and Shelter Kits.
- Programme Monitoring and Evaluation: The Shelter Sector IM team is planning to roll out the Activity Info to replace the Excel-based 4W. In this regard, three sector partners volunteer for the pilot phase. Sector IM team has a plan to train sector partners in May 2018 who agreed to pilot Activity Info.

OVERALL FIGURES



Total no. of people covered with emergency and durable shelter support in Syria as of April 2018

TARGET **864,296**

REACH **84,550**

NUMBER OF PEOPLE COVERED WITH VARIOUS SHELTER SUPPORTS

SEASONAL SHELTER PROVISION



TARGET **3,750**

REACH **12,819**

EMERGENCY SHELTER PROVISION



TARGET **309,000**

REACH **39,193**

EMERGENCY SHELTER REHABILITATION



TARGET **128,100**

REACH **29,699**

DURABLE SHELTER SUPPORT



TARGET **423,446**

REACH **2,839**



GAPS AND CHALLENGES

- Lack of shelter materials and manpower as well strict security protocols have posed major challenges to the speedy shelter rehabilitation in locations that are severely devastated (i.e. Deir ez-Zor);
- Access and safety are the key challenges in some parts of the country as well as partner capacity and heavy processes along with funding constraints;
- Increasing needs, diminishing coping capacities of both the IDPs and host communities, and limited financial resources of the government to provide shelter compensation require sector partners to scale up operational presence;
- Shelter and infrastructure needs are huge and the Shelter Sector partners collectively do not have capacity to meet all the needs;
- Issues related to the loss of occupancy documents deprived some population from accessing shelter supports;
- Opportunities for systematic field-based data collection remain very limited due to access or authorization restrictions, resulting in incomplete needs analysis in some areas.

CRISIS BACKGROUND: The crisis in Syrian Arab Republic that started in March 2011 has transformed into a complex emergency that has displaced around 6.1 million people in various parts of the country. As per the 2018 Humanitarian Needs Overview, around 13.1 million people are in need of humanitarian assistance of which around 4.2 million people are in need of shelter support and other multi-sectorial assistance as they continue to struggle in an unsafe and uncertain environment. Due to the protracted nature of the hostilities, many of both displaced and host communities become more vulnerable and their ability to cope and find safe and durable shelter solutions have been greatly affected. The humanitarian community has been challenged to both provide emergency and life-saving shelter solutions while building back community cohesion and resilience through provision of adequate shelter assistance.

Shelter Sector Coordination Team

Pankaj Kumar Singh, Shelter Sector Coordinator (singhpa@unhcr.org)

Bareaa Alkafre, Asst. Sector Officer (alkafre@unhcr.org)

Muhammad Shazad, IM Officer (shahzadm@unhcr.org)

Corazon C. Lagamayo, IM Officer (lagamayo@unhcr.org)

Maha Shaaban, IM Associate (shabanm@unhcr.org)

Ashraf Zedane, IM Associate - Aleppo (zedane@unhcr.org)



PARTNER IN FOCUS



The Syrian Society for Social Development (SSSD) is a non-profit, non-religious and non-political NGO; registered with Ministry of Social Affairs and Labor (MOSAL).

The founding members of SSSD have come together from varied geographical, cultural and professional backgrounds to provide an effective response to the needs and challenges of Syrian youth.

SSSD is active in Syria since July , 2009 and has been providing services in Shelter, WASH, Disaster Risk Reduction, and Protection related interventions. SSSD has 700 staff members and has an extensive network of more than 1500 volunteers in 9 governorates of Syria. SSSD is planning to expand its presence to Ar-Raqqa, Dará, and Deir ez Zor governorates contingent to the security situation.

SSSD is an active partner of the Shelter Sector, and have implemented different shelter activities such as upgrading of unfinished buildings, camp construction, and construction of transitional housing. Recently SSSD has planned the distribution/ installation of shelter kits, rehabilitation of collective shelter/ damage houses in Homs and Rural Damascus.

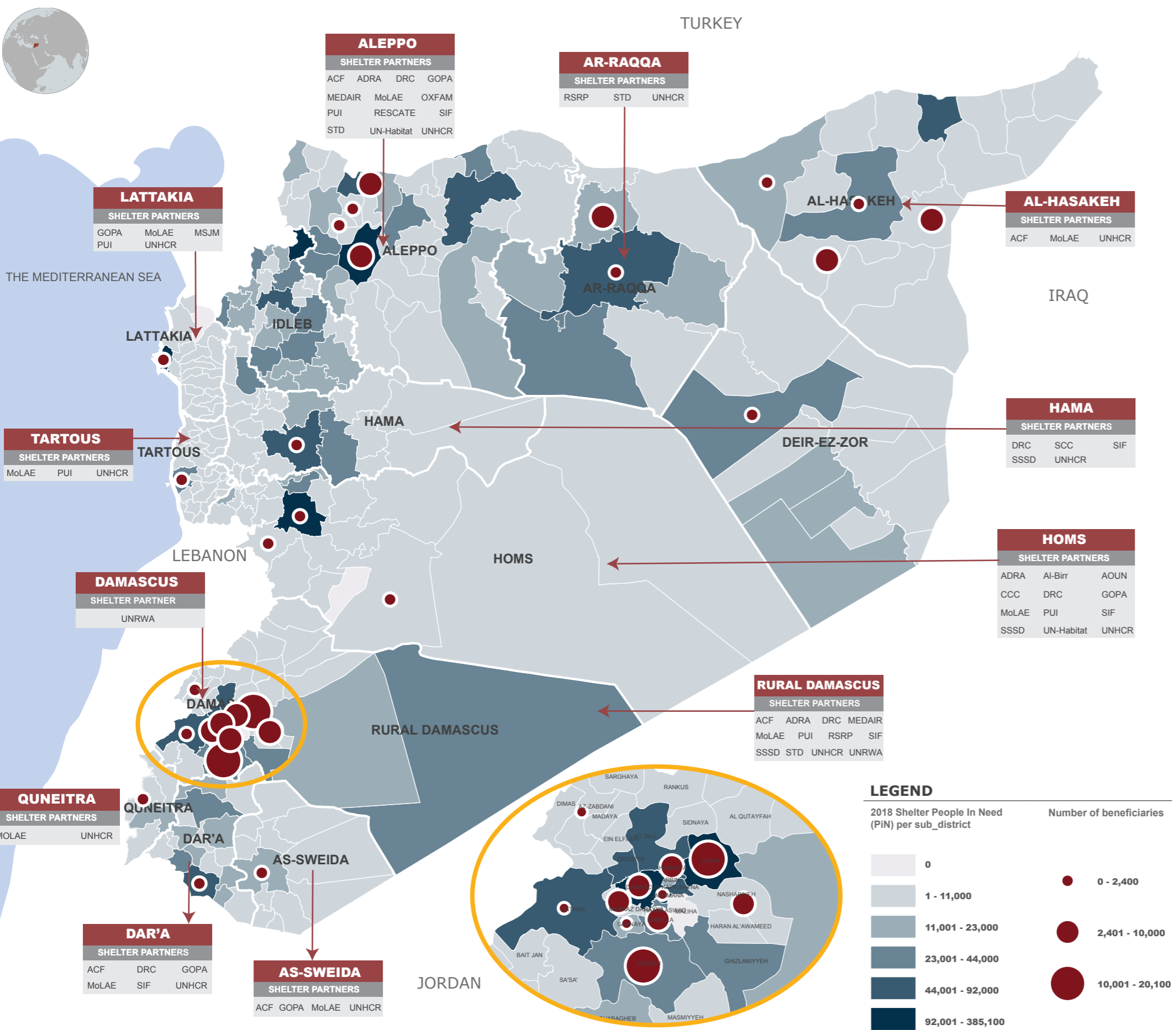
The major partners and donors of SSSD are MoE, MoLAE, MoSAL, OCHA, Questscop, UNDP, UNFPA, UNICEF, UNHCR, and WHO.

SSSD website: <http://sssd-ngo.net>

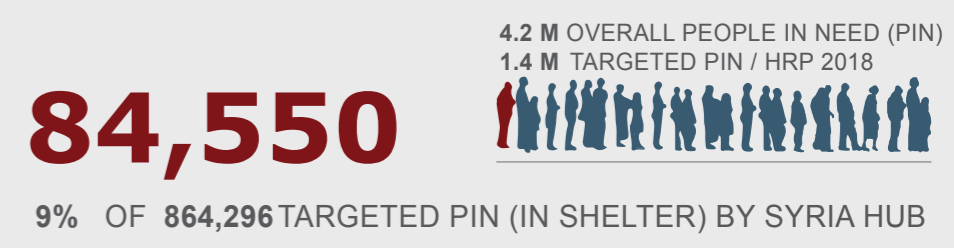


SYRIA: SHELTER SECTOR RESPONSE SNAPSHOT

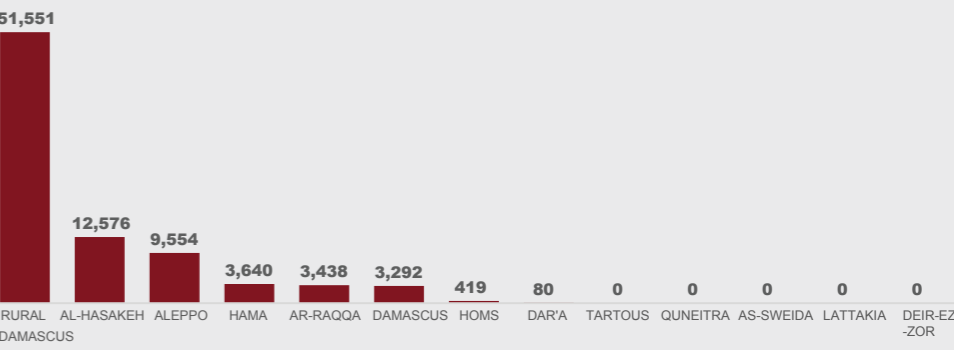
Reporting Period: January - April 2018



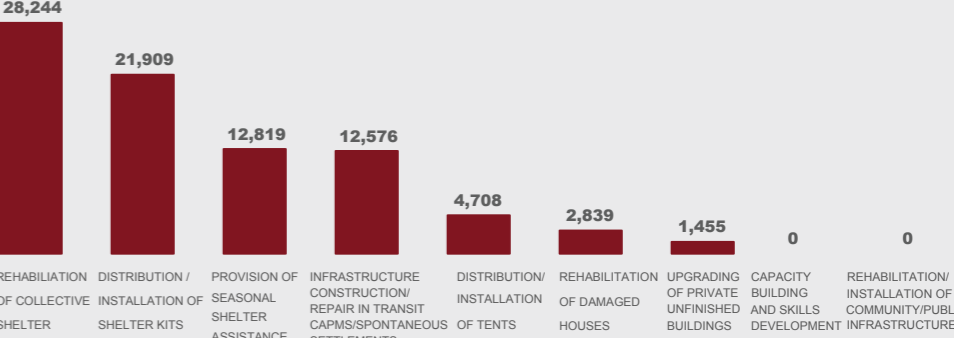
TOTAL BENEFICIARIES COVERED



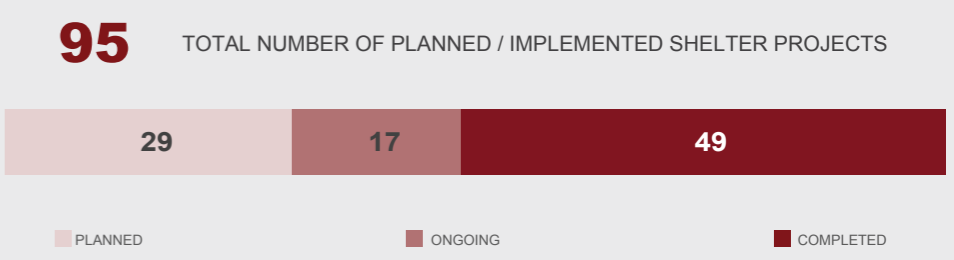
BENEFICIARIES COVERED PER GOVERNORATE



BENEFICIARIES COVERED BY TYPE OF SUPPORT



NO. OF SHELTER PROJECTS PER STAGE



SHELTER SECTOR PARTNERS

CO-LEAD AGENCIES			
ACF	ADRA	Al-Birr	AL Ihsan
AI Taalouf	AOUN	CCC	DRC
GOPA	IOM	MEDAIR	NRC
OXFAM	PUI	RESCATE	RSRP
SARC	SCC	SIF	SSSD
STD	UN-Habitat	UNRWA	

