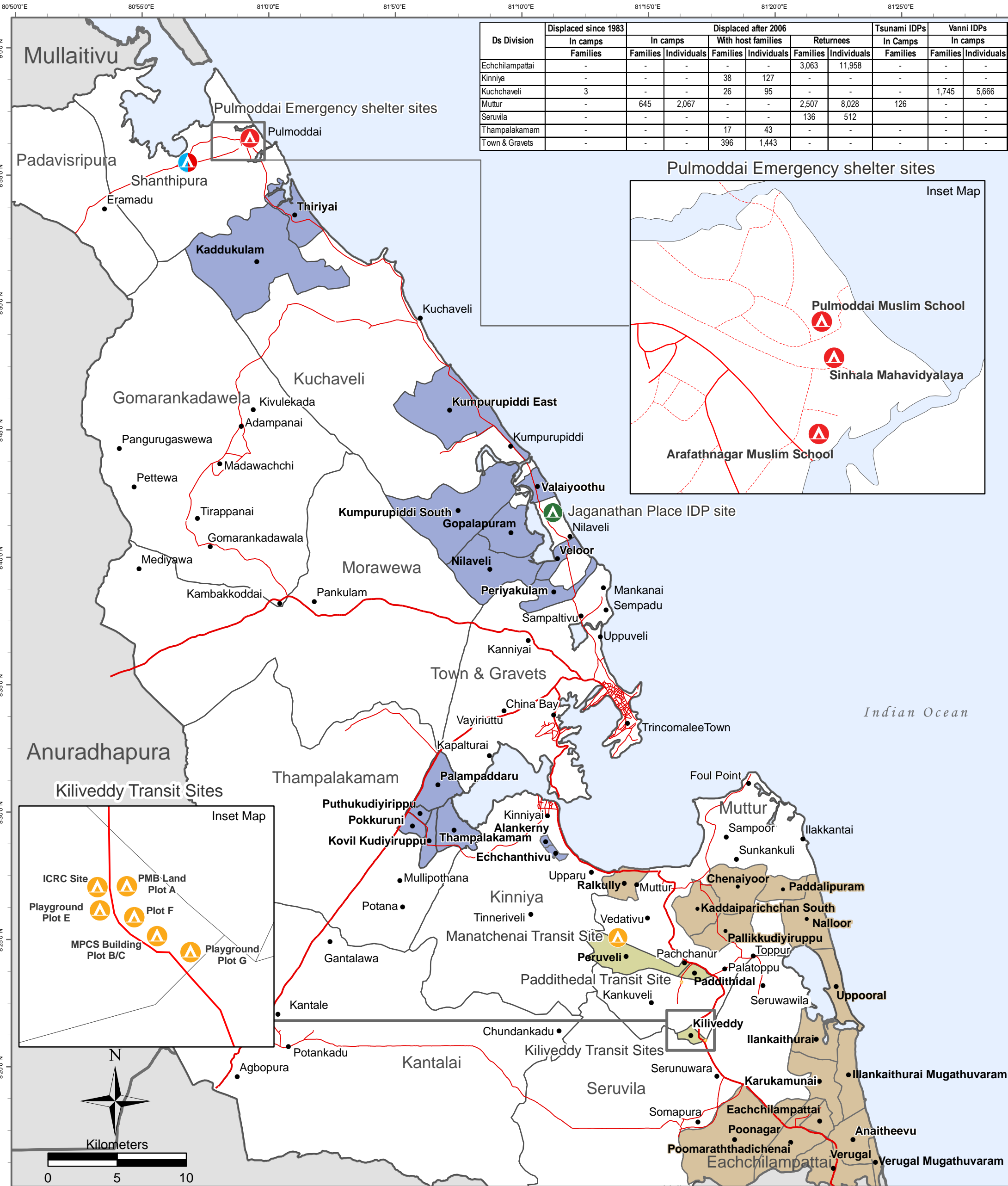


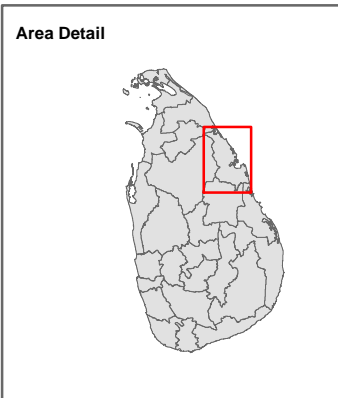
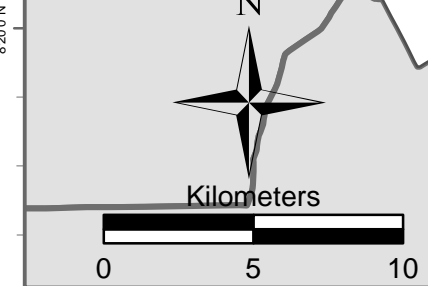
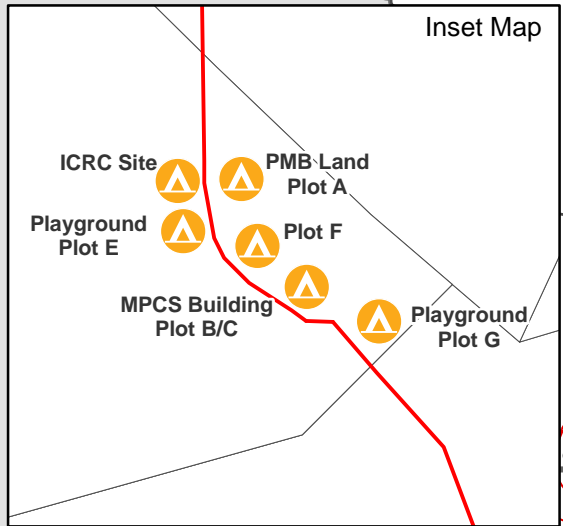
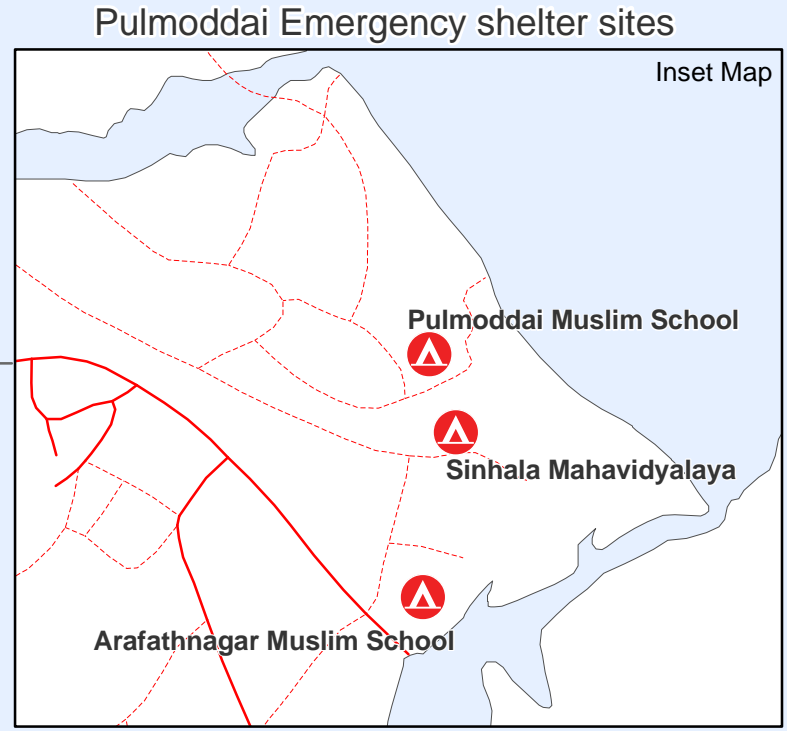
IDP Site Locations

As at 30 April 2009

DISTRICT: Trincomalee



Ds Division	Displaced since 1983		Displaced after 2006				Tsunami IDPs		Vanni IDPs	
	In camps	Families	Families	Individuals	With host families	Returnees	In Camps	In camps	Individuals	
Echchilampattai	-	-	-	-	-	3,063	11,958	-	-	-
Kinniya	-	-	-	38	127	-	-	-	-	-
Kuchchaveli	3	-	-	26	95	-	-	-	1,745	5,666
Muttur	-	645	2,067	-	-	2,507	8,028	126	-	-
Seruvila	-	-	-	-	-	136	512	-	-	-
Thampalakamam	-	-	-	17	43	-	-	-	-	-
Town & Gravets	-	-	-	396	1,443	-	-	-	-	-



Legend

- Place Name
- Transit Site
- IDP Site (From 1983)
- Emergency Shelter Site
- New site identified for emergency shelter site
- Main Road
- Minor Road
- Track Road
- GN division with IDPs in camps
- GN Division with Returnees
- GN Division with IDPs in host families
- DS Division
- District Boundary

Data source :
DS Office, UNHCR and Humanitarian Agencies in the District

Updated as at: **30 - Apr - 2009**

Produced on: 05 - May - 2009

Projection / Datum: Transverse Mercator Kandawala

Admin boundaries provided by: Survey Department, Government of Sri Lanka

MapNumber: OCHA/LK/TRIN/Disp/IDPSitu/001/V5

This map is designed for printing on A3 size

The boundaries, names and the designations used on this map do not imply official endorsement or acceptance by the United Nations.

© 2009 United Nations Office for the Coordination of Humanitarian Affairs, Sri Lanka

58 Arunagiri Rd, Trincomalee
Tel: +94 (26) 2222356 - 5, Fax: +94 (26) 2222355
Email: ocha_trincomalee@fastmail.fm
Website: www.humanitarianinfo.org/srilanka

Produced through the generous support of: