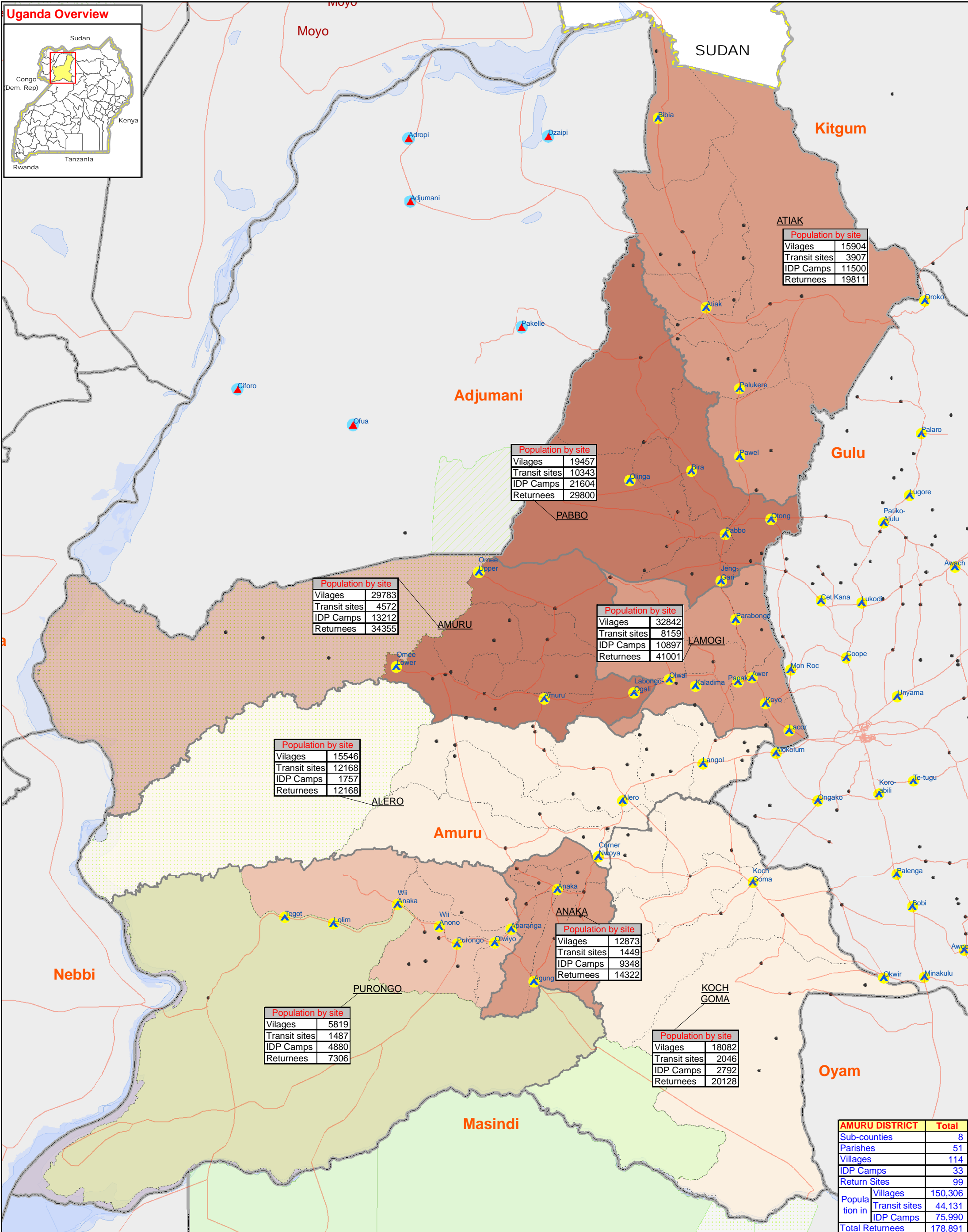
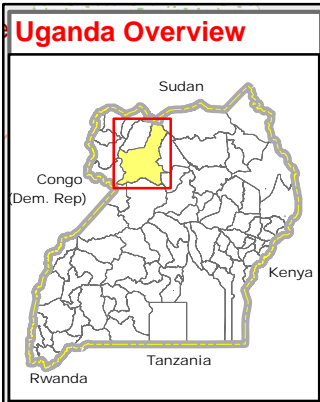


AMURU DISTRICT: IDP Camps and Return Sites Population (May 2009)



AMURU DISTRICT	Total
Sub-counties	8
Parishes	51
Villages	114
IDP Camps	33
Return Sites	99
Population in	
Villages	150,306
Transit sites	44,131
IDP Camps	75,990
Total Returnees	178,891

Legend

- Motorable Road
- IDP Camp
- IDP Returnee Site
- Refugee Camp
- IDPs by Sub-County, May 09
 - 1,757 - 3,000
 - 3,001 - 6,000
 - 6,001 - 12,000
 - 12,001 - 21,604
- National Boundary
- District Boundary
- Sub-County Boundary
- Parish Boundary
- National Park
- Rangeland
- Water Body/Lakes
- Forest Reserve
- Game Reserve

Data Sources:
 Admin Boundaries - UBOS 2006
 Road Network - FAO
 IDP Camp/Return Sites - Humanitarian Agencies/
 Camp phase out committee (verified as of June 2009)
 Population movement data - UNHCR Population
 Movement Matrix, LC1 submitted between
 Mar-May 2009

Draft

This map is a work in progress. Please contact the IMU/OCHA as soon as possible with any corrections.

Map Disclaimer:
 The boundaries and names shown on this map do not imply official endorsement or acceptance by the United Nations.

Map Prepare Date: 07 July 2009 (IMU/UNOCHA)
 File: UG-IDP-12_A3_07July09_Amuru District IDP Camps & Return Sites Population