

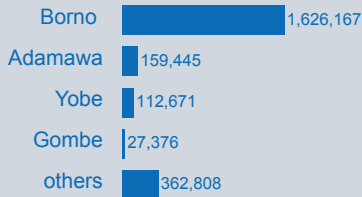


The humanitarian space is increasing with greater access to previously inaccessible areas. There are 1.7 million internally displaced persons (IDPs) in the north-eastern states of Adamawa, Borno, Gombe and Yobe according to Round 10 of the Displacement Tracking Matrix (DTM) assessments, completed in June. The total estimated population in the states of Adamawa, Borno, Gombe and Yobe stands at 1.9 million when the additional 200,000 IDPs identified by Nigerian authorities and other actors are included.

As more IDPs are identified, others are making their way home. In Adamawa and southern Borno the DTM identified 663,000 returnees from the internally displaced and from neighboring Chad, Cameroon and Niger. Access to adequate food, shelter, water and basic health, and education services remains limited. The need for humanitarian assistance remains acute for all returnees.

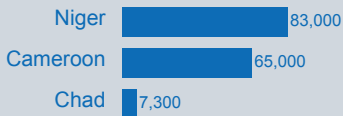
KEY FIGURES

1.9 million
estimated number of IDPs in assessed Local Government Areas of Adamawa, Borno, Gombe and Yobe as of August 2016*.

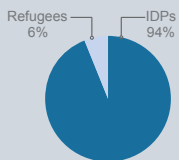


* DTM Round X and other sources

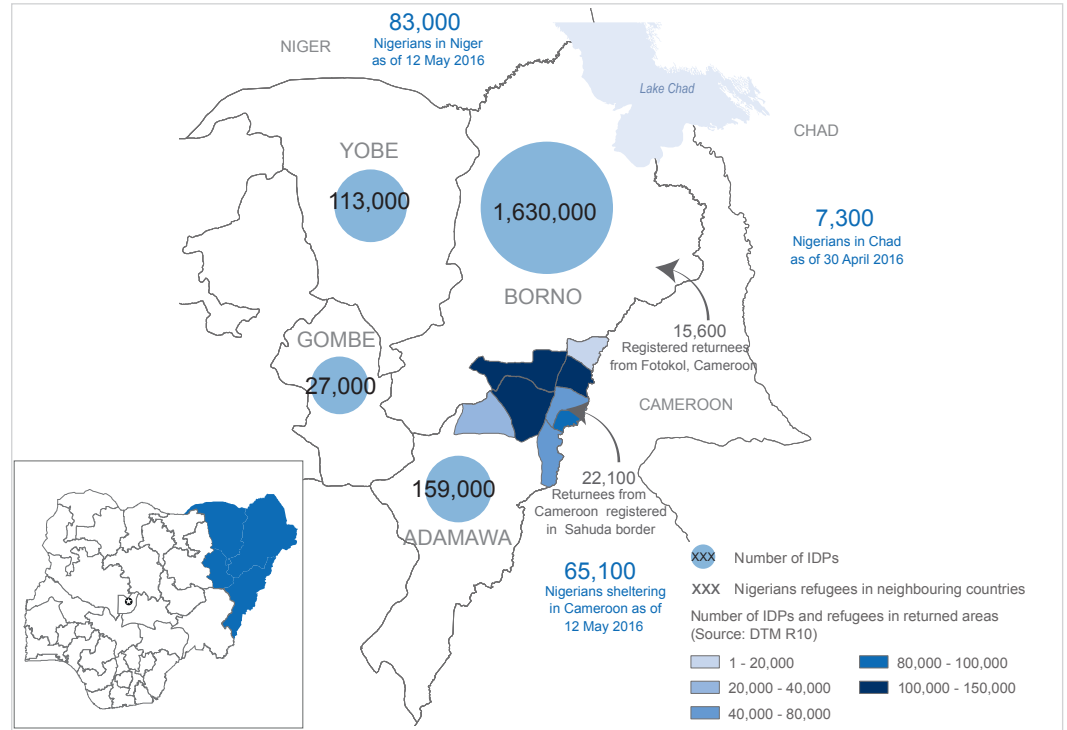
155,000
estimated number of Nigerians who fled to neighbouring countries (Cameroon, Chad and Niger).



663,500
Estimated number of people previously IDPs and refugees who have returned to Adamawa and Borno.**



** Only IDPs and refugee returnees captured by DTM Round X



INTERNALLY DISPLACED PERSONS PROFILE***

99% are displaced by insurgency

1% are displaced by communal clashes and natural disasters

58% of displaced population are children.

28% of displaced are children under five years old.

53% of displaced population are female.

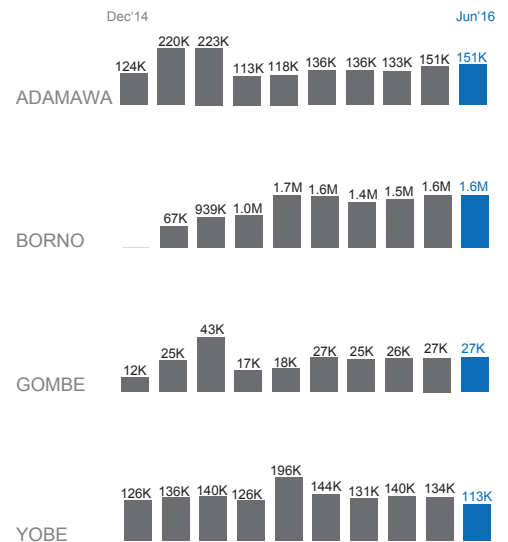
6% of displaced population are elderly.

76% of displaced population are living with host families.

24% of displaced population are living in camps.

*** In Adamawa, Borno, Gombe and Yobe States

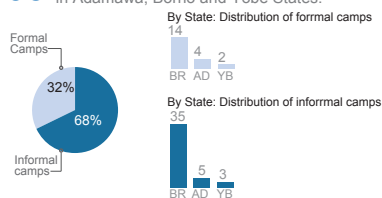
NORTHEAST: TRENDS OF INTERNALLY DISPLACED PERSONS****



**** The DTM is published bi-monthly, Borno figures as of August 2016

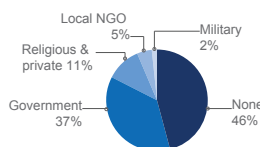
CAMPS SITUATION OVERVIEW

63 number of formal and informal camps in Adamawa, Borno and Yobe States.



Note: BR: Borno, AD: Adamawa, YB: Yobe

41% of camps and camps like sites are with out Camp Management Agency in Adamawa, Borno and Yobe States.



43 sites where majority of IDPs practice open defecation.

9 sites lacking portable water.

38 sites with no malnutrition screening.

21 sites with children not attending school.

22 sites where IDPs reported not accessing health facilities.