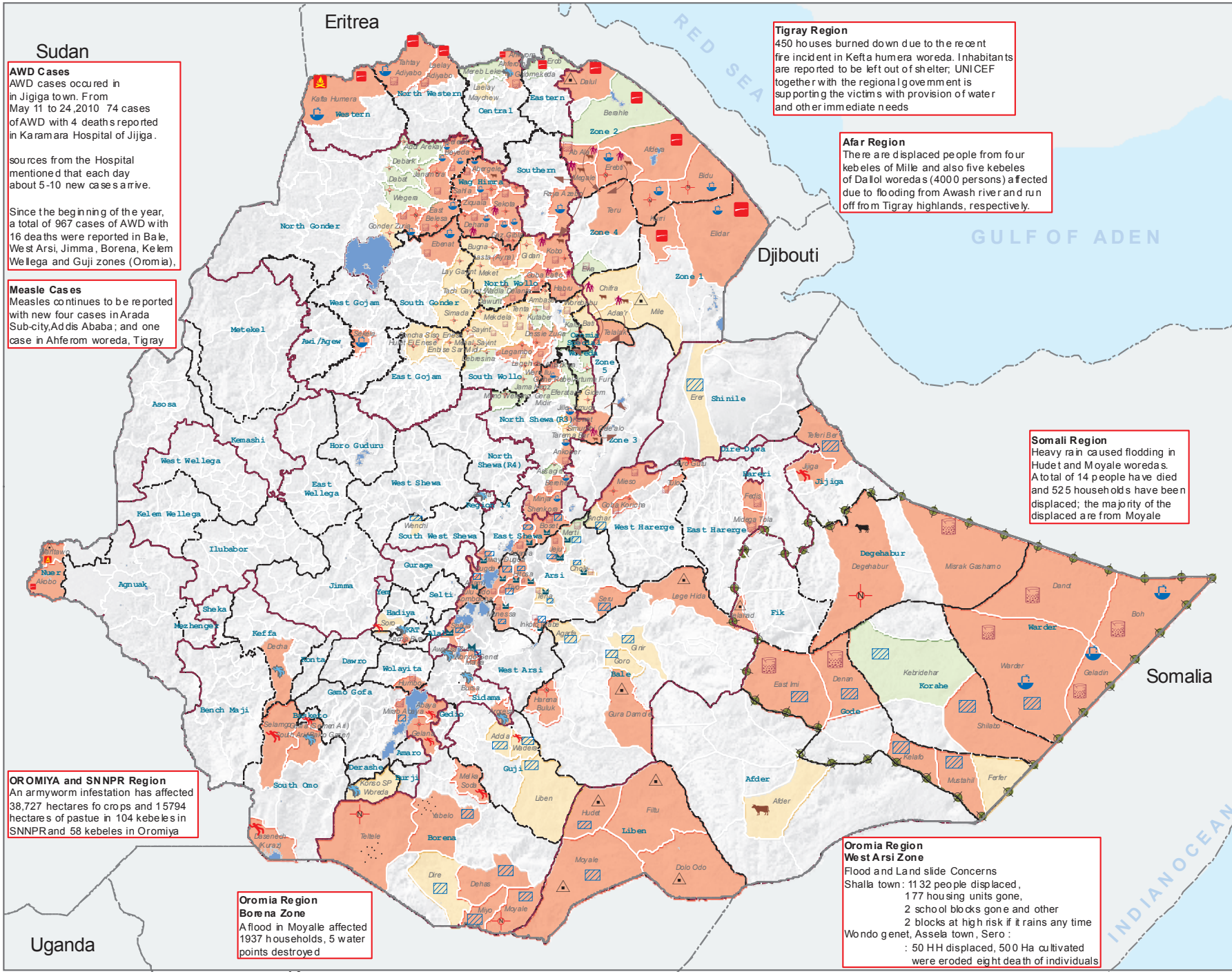


ETHIOPIA - National Hot Spot Map

01 June 2010



Sudan
AWD Cases
 AWD cases occurred in Jigjiga town. From May 11 to 24, 2010, 74 cases of AWD with 4 deaths reported in Karamara Hospital of Jigjiga.

sources from the Hospital mentioned that each day about 5-10 new cases arrive.

Since the beginning of the year, a total of 967 cases of AWD with 16 deaths were reported in Bale, West Arsi, Jimma, Borena, Kelem Wellega and Guji zones (Oromia).

Measle Cases
 Measles continues to be reported with new four cases in Arada Sub-city, Addis Ababa; and one case in Ahferom woreda, Tigray.

Tigray Region
 450 houses burned down due to the recent fire incident in Kefta Humera woreda. Inhabitants are reported to be left out of shelter; UNICEF together with the regional government is supporting the victims with provision of water and other immediate needs.

Afar Region
 There are displaced people from four kebeles of Mile and also five kebeles of Dalol woredas (4000 persons) affected due to flooding from Awash river and runoff from Tigray highlands, respectively.

Somali Region
 Heavy rain caused flooding in Hudef and Moyale woredas. A total of 14 people have died and 525 householders have been displaced; the majority of the displaced are from Moyale.

OROMIYA and SNNPR Region
 An armyworm infestation has affected 38,727 hectares for crops and 15,794 hectares of pasture in 104 kebeles in SNNPR and 58 kebeles in Oromiya.

Oromia Region
Borena Zone
 A flood in Moyale affected 1937 households, 5 water points destroyed.

Oromia Region
West Arsi Zone
 Flood and Land slide Concerns
 Shalla town : 1132 people displaced, 177 housing units gone, 2 school blocks gone and other 2 blocks at high risk if it rains any time
 Wondo genet, Assela town, Sero : 50 HH displaced, 500 Ha cultivated were eroded eight death of individuals

Legend

- International Boundary
- - - Regional Boundary
- - - Zonal Boundary
- Woreda Boundary
- Lakes
- Military Operation

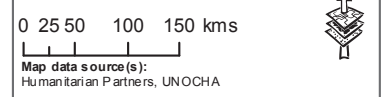
Hot Spot Areas

- No Data/No Humanitarian Concern
- Close Monitoring
- Medium Humanitarian Concern
- Critical

Hot Spot Indicators – This month

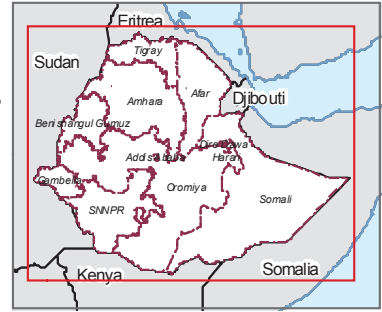
- AWD
- Malaria
- Measles
- Flood
- Fire Incidents
- Refugees/IDPs
- Water Shortage/WASH related concerns
- Food Insecurity
- High Malnutrition
- Land Slide
- Border Conflict
- Livestock Migration
- Livestock Disease/Mortality due to drought
- House Hold Migration
- Approx. Pastoralist & Livestock Migration Route

Map Doc Name: 11_HS_004_National_053110_A4
 Creation Date: 31 May, 2010
 Web Resources: <http://ochaonline.un.org/ethiopia>
 Contact address: ocha-eth@un.org



Map data source(s):
 Humanitarian Partners, UNOCHA

Disclaimers:
 The designations employed and the presentation of material on this map do not imply the expression of any opinion whatsoever on the part of the Secretariat of the United Nations concerning the legal status of any country, territory, city or area or of its authorities, or concerning the delimitation of its frontiers or boundaries.



Uganda

INDIANOCEAN