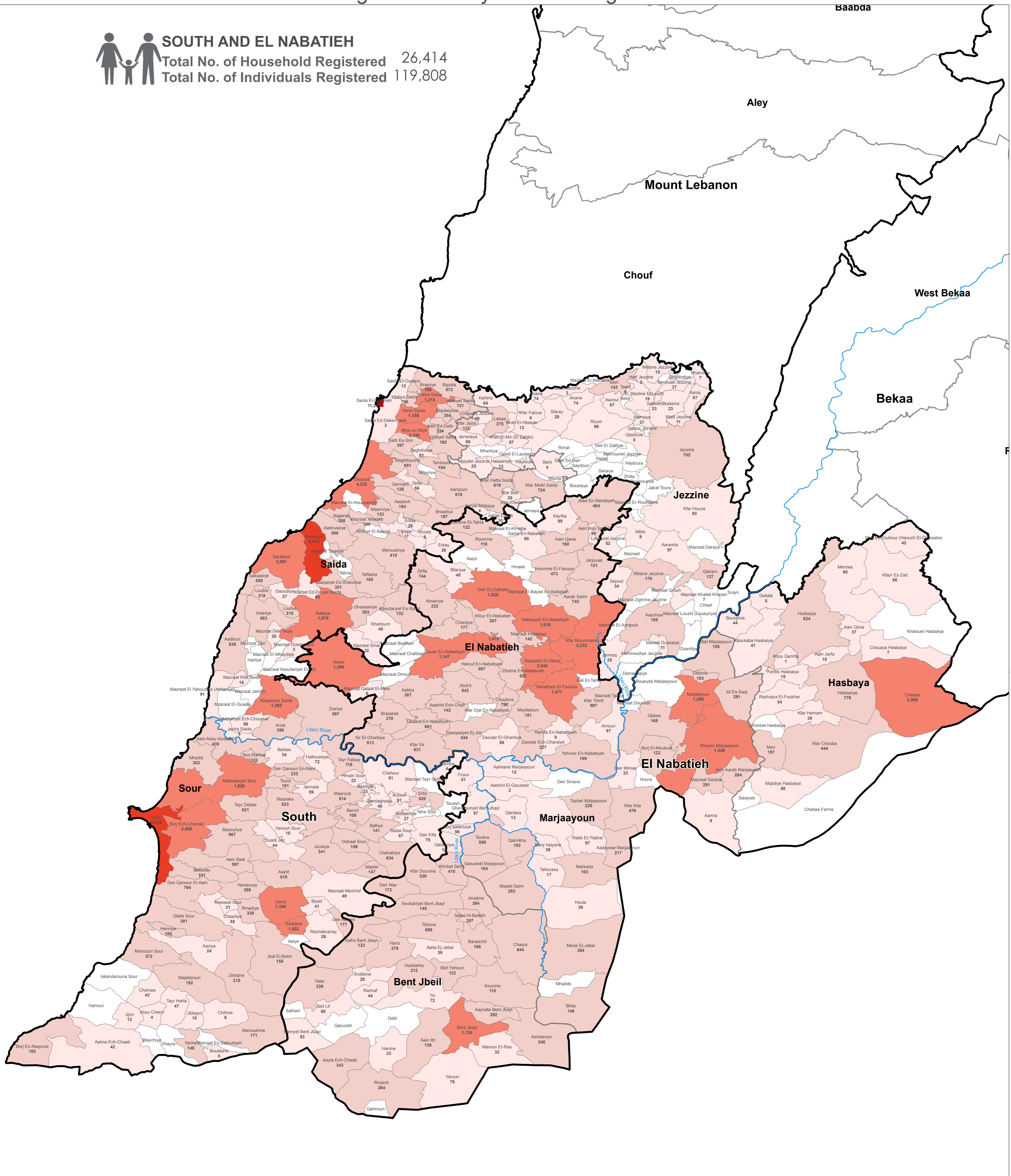


# SYRIA REFUGEE RESPONSE

## LEBANON South and El Nabatieh Governorates

Distribution of the Registered Syrian Refugees at Cadastral Level As of 30 June 2017

**SOUTH AND EL NABATIEH**  
 Total No. of Household Registered 26,414  
 Total No. of Individuals Registered 119,808



**Legend**

- Litani River
- Governorate
- Caza

**No. of Refugees per Cadastral**

- 0 - 100
- 100 - 1,000
- 1,000 - 5,000
- 5,000 - 10,000
- 10,000 - 16,000

*The No. indicates the registered refugees at the cadastral level*

**Notes**  
 This map has been produced by the Inter-Agency Information Management Unit of UNHCR based on maps and material provided by the Government of Lebanon for operational purposes. It does not constitute an official United Nations map. The designations employed and the presentation of material on this map do not imply the expression of any opinion whatsoever on the part of the Secretariat of the United Nations concerning the legal status of any country, territory, city or area or of its authorities, or concerning the delimitation of its frontiers or boundaries.

Data Sources:  
 - Lebanese Border, Caza and Cadastral Boundaries: NPMP/LT 2005.  
 - Geographic Projection WGS 1984

Registered Refugees Figures by UNHCR as of 30 June 2017.  
 For more information contact Diana El Habr at [ehabr@unhcr.org](mailto:ehabr@unhcr.org)

GIS and Mapping by UNHCR. For information and updates contact Jad Ghosn: [ghosn@unhcr.org](mailto:ghosn@unhcr.org)  
 Maroun Sader: [sader@unhcr.org](mailto:sader@unhcr.org)

NPMP/LT: National Physical Master Plan for the Lebanese Territory

LOCATION DIAGRAM

