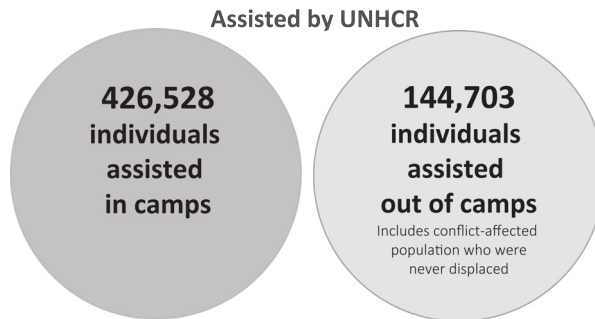


UNHCR Co-ordinated Clusters:

- Protection**
(Co-ordinated by UNHCR & DRC)
- Shelter & NFI**
(Co-ordinated by UNHCR & NRC)
- Camp Coordination & Camp Management**
(Co-ordinated by UNHCR & IOM)

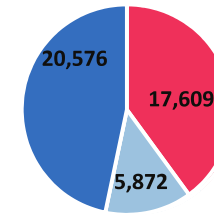
1,048,044 displaced since 17 October 2016 of whom **827,778** are still currently displaced



Camp/Site Plots
44,000

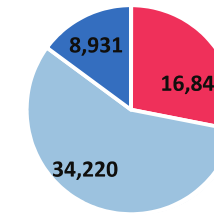
Targets:

- Occupied
- Developed Plots
- New requirements in 2017

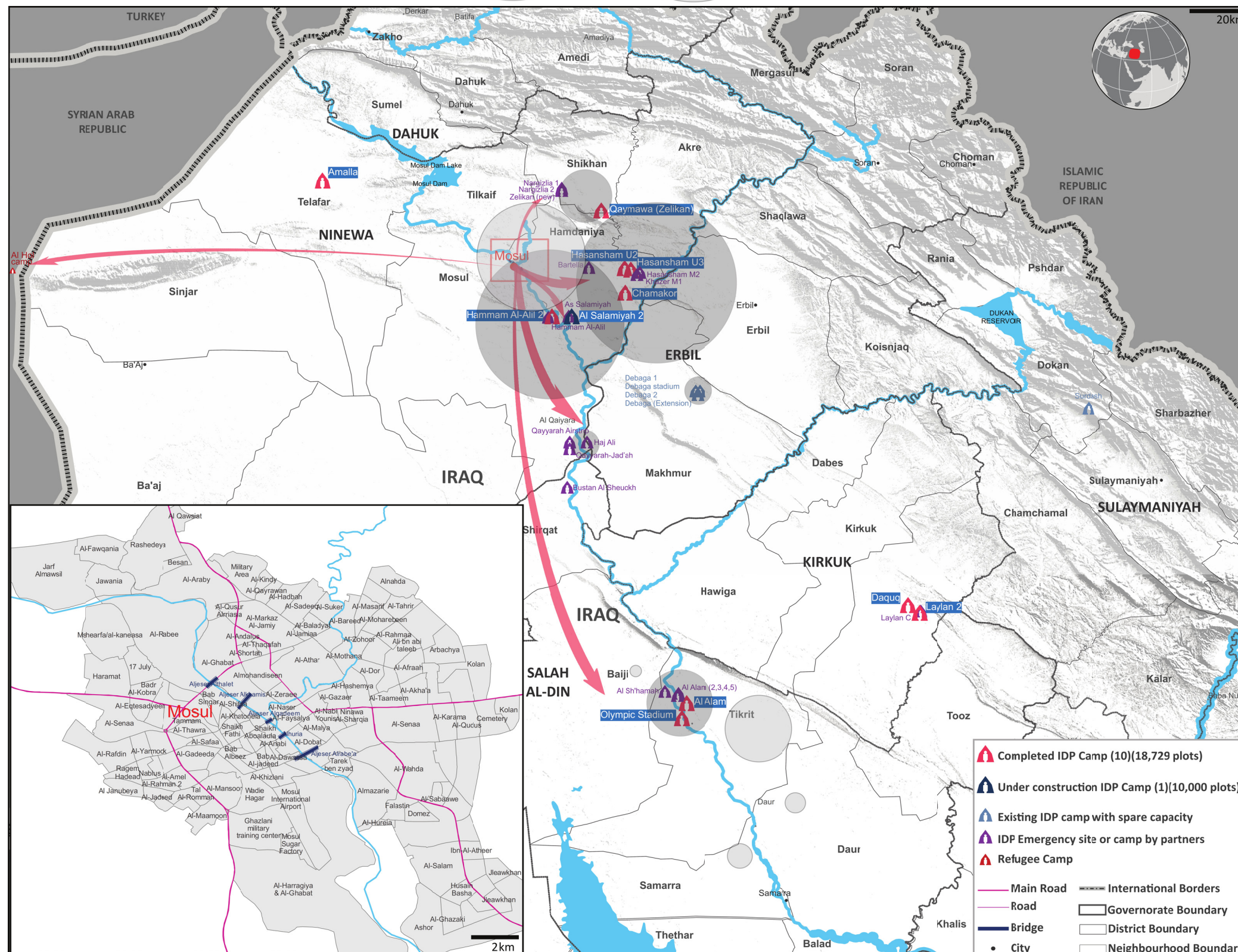
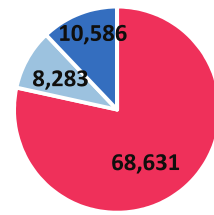


Tents
60,000

- Distributed
- Available
- New requirements in 2017



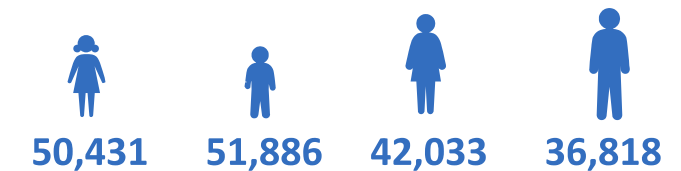
Complete NFI Kits
87,500



UNHCR Protection Monitoring for Mosul Response

38,843 HHs Assessed

181,168 Individuals



Plots in UNHCR Constructed Camps

Camp	Occupied Plots	Developed Plots	Undeveloped Plots
Al Salamiyah 2	4,752		5,248
Hammam Al-Alil 2	4,602	70	
Amalla	3,032		
Chamakor	1,932	468	
Hasansham U3	1,581	355	
Daquq	1,600		
Hasansham U2	1,431	129	
Qaymawa (Zelikan)	211	818	
Laylan 2	1,000		
Olympic Stadium	1,000		
Al-Alam	500		

A total of 28,729 plots planned for 172,000 IDPs

of which

A total of 23,481 plots developed for 140,886

1 Family per plot and 6 Individuals per family

Camps and emergency sites include locations within the broader Mosul corridor. **1,294,722** IDPs from Erbil, Ninewa, Salah al-Din and Kirkuk Governorates were displaced due to hostilities since April 2016.

UNHCR Funding Requirements



USD 212 million required in 2017 for Mosul emergency response

The boundaries and names shown and the designations used on this map do not imply official endorsement or acceptance by the United Nations.

Sources: UNHCR, UNOCHA, CCCM Cluster, Shelter/NFI Cluster, IOM DTM. Geographic Coordinate System: GCS-WGS