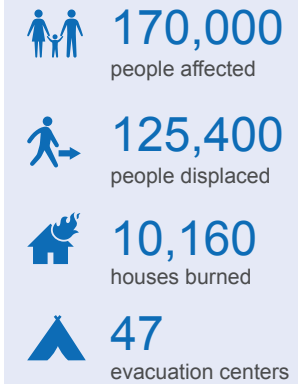


## BACKGROUND

The situation in Zamboanga city and Basilan province, southern Philippines, and its surrounding areas is now a humanitarian crisis with an estimated 170,000 people affected. The violence has left approximately 208 people dead, with tens of thousands affected and over 10,000 homes destroyed. Continued humanitarian assistance is required to help these most vulnerable people.

## ZAMBOANGA AND BASILAN EMERGENCY KEY FIGURES



## Evacuation Centres

Total IDPs

- < 1,000
- > 1,000
- Airport
- Community Hall
- Mosque
- School
- Houses Burned
- Sports Stadium

The boundaries and names shown and the designations used on this map do not imply official endorsement or acceptance by the United Nations.