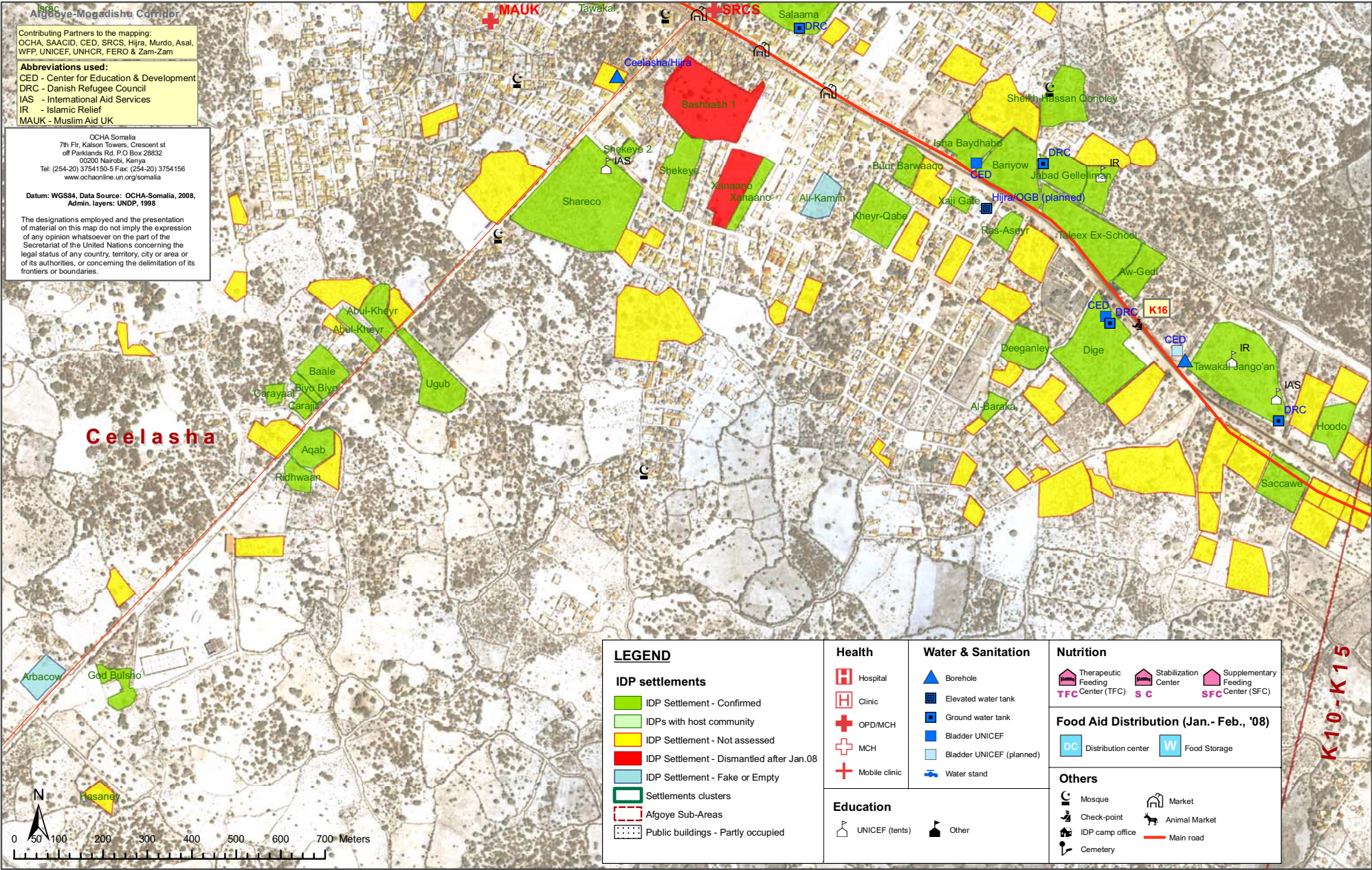




SOMALIA - AFGOOYE CORRIDOR - IDP SETTLEMENTS

Ceelasha (South) Area

01 January 2009



Contributing Partners to the mapping:
 OCHA, SAACID, CED, SRCS, Hijra, Murdo, Asal, WFP, UNICEF, UNHCR, FERO & Zam-Zam

Abbreviations used:
 CED - Center for Education & Development
 DRC - Danish Refugee Council
 IAS - International Aid Services
 IR - Islamic Relief
 MAUK - Muslim Aid UK

OCHA Somalia
 7th Flr, Kalsion Towers, Crescent st
 off Parklands Rd, P.O Box 28832
 00200 Nairobi, Kenya
 Tel: (254-20) 3754150-5 Fax: (254-20) 3754156
 www.ochaonline.un.org/somalia

Datum: WGS84, Data Source: OCHA-Somalia, 2008, Admin. layers: UNDP, 1998

The designations employed and the presentation of material on this map do not imply the expression of any opinion whatsoever on the part of the Secretariat of the United Nations concerning the legal status of any country, territory, city or area or of its authorities, or concerning the delimitation of its frontiers or boundaries.

LEGEND	
IDP settlements	
	IDP Settlement - Confirmed
	IDPs with host community
	IDP Settlement - Not assessed
	IDP Settlement - Dismantled after Jan.08
	IDP Settlement - Fake or Empty
	Settlements clusters
	Afgoye Sub-Areas
	Public buildings - Partly occupied

Health	Water & Sanitation

Nutrition		
Food Aid Distribution (Jan.- Feb., '08)		
Others		



K10-K15