

Somalia: Humanitarian Snapshot (as of 3 December 2015)

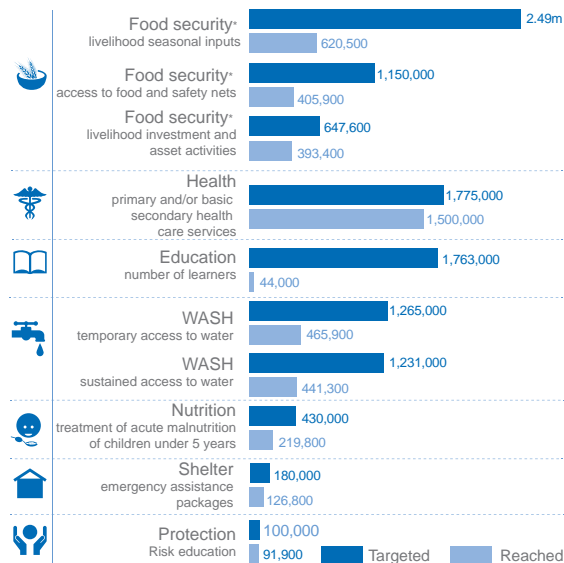
The humanitarian crisis in Somalia is among the most complex protracted emergencies in the world. Since the beginning of the *Deyr* rainy season in October, flooding has affected 144,000 people and nearly 60,000 displaced. This comes amid an already fragile humanitarian situation with an estimated 4.9 million people in need of assistance. Over 1.1 million people remain internally displaced.



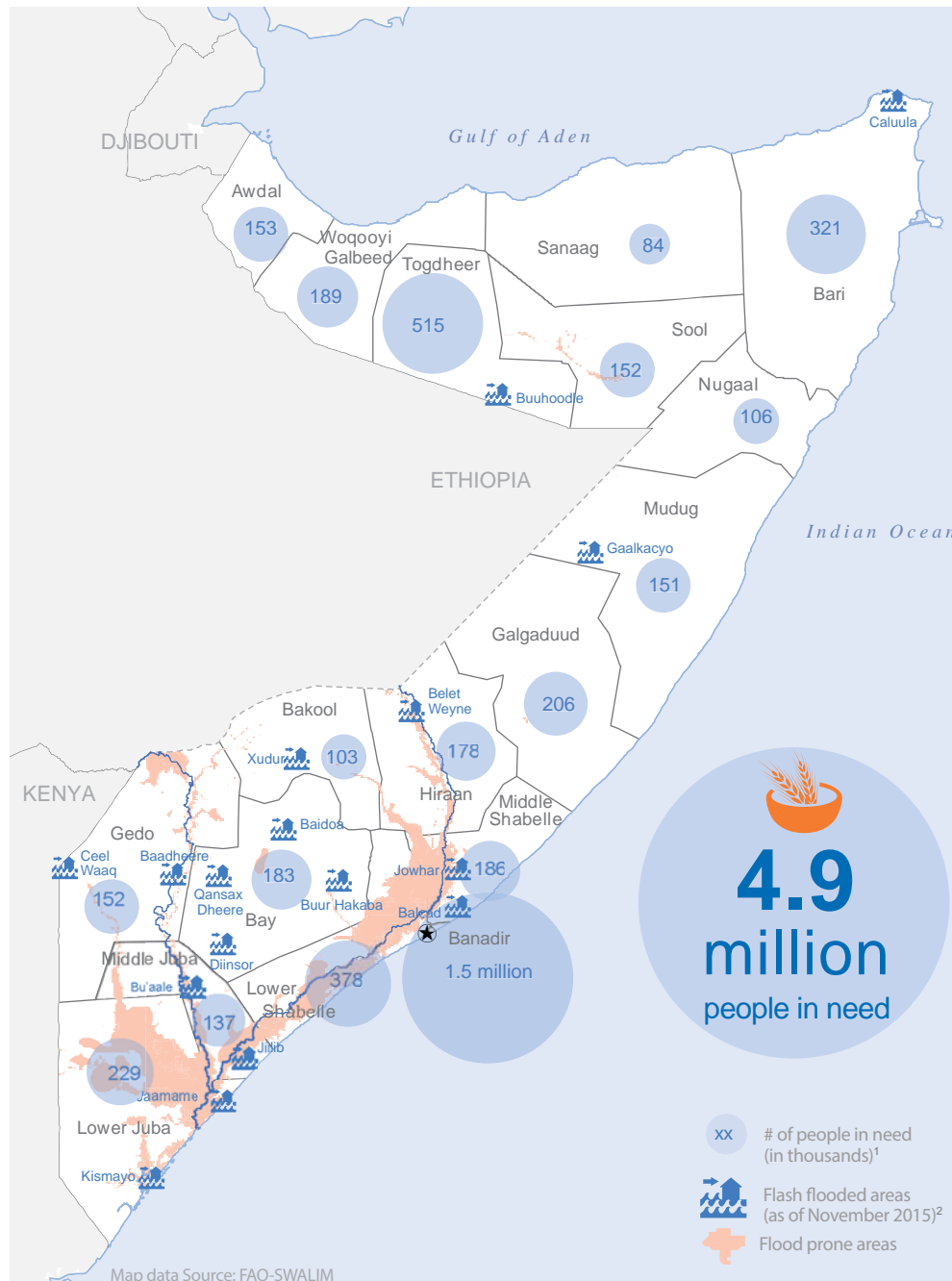
Humanitarian Response

Humanitarian partners continue to scale up their response to meet the current life-saving and livelihood needs, including those arising from the El Niño phenomenon, compounding this year's rainy season.

Response (as of 1 November 2015)

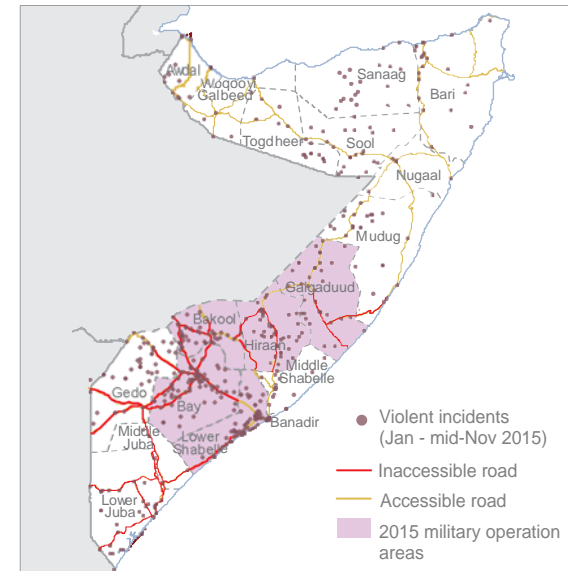


* Total reached in the month of October, others are cumulative figures
For more details on response, please see the humanitarian dashboard on this link: <http://bit.ly/21jaFph>



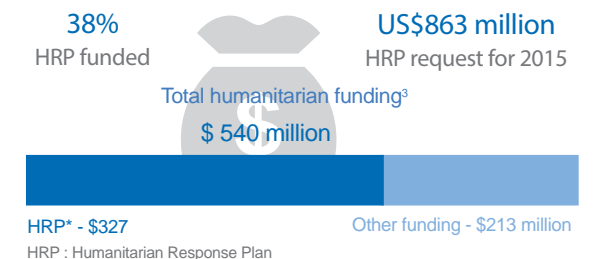
Humanitarian access

The limited infrastructure, insecurity, administrative impediments and capacity limitations continue to constrain access. Attacks and threats against humanitarians are on the rise. Since January 2015, 120 incidents that directly impacted humanitarian organizations have led to the death of 12 aid workers, injury of 17, arrests of 36 and abduction of eight people.



Funding shortfall

Humanitarian needs in Somalia continue to outpace funding. The impact of funding shortfalls is felt across all clusters. Sustained and scaled up response commensurate to the needs is critical to save lives and livelihood.



The boundaries and names shown and the designations used on these maps do not imply official endorsement or acceptance by the United Nations