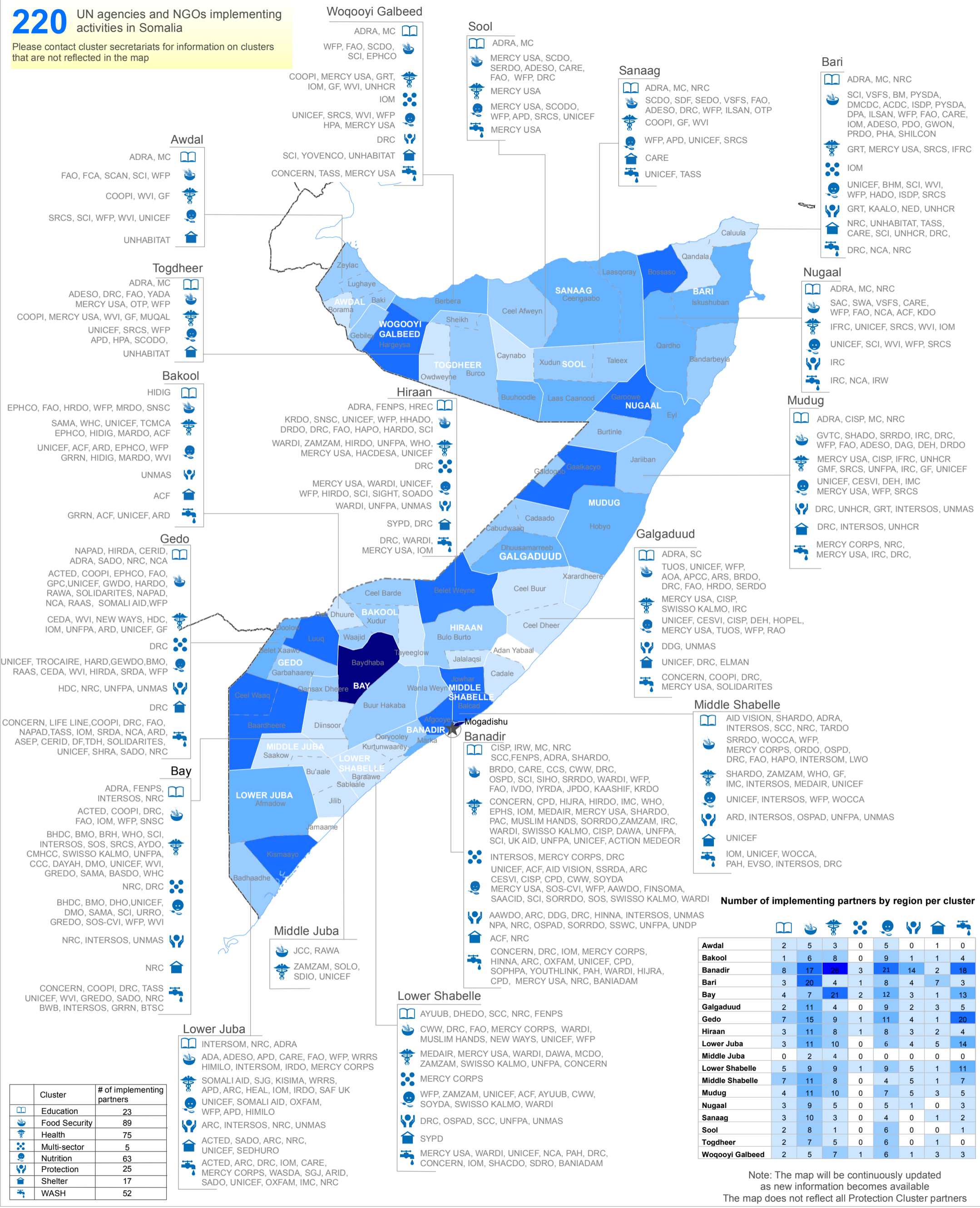


**220** UN agencies and NGOs implementing activities in Somalia

Please contact cluster secretariats for information on clusters that are not reflected in the map

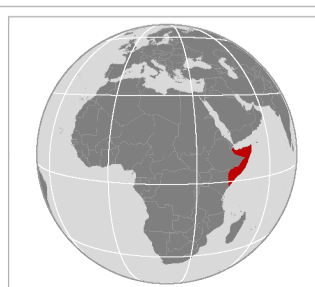


Cluster	# of implementing partners
Education	23
Food Security	89
Health	75
Multi-sector	5
Nutrition	63
Protection	25
Shelter	17
WASH	52

**Number of implementing partners by region per cluster**

	Education	Food Security	Health	Multi-sector	Nutrition	Protection	Shelter	WASH
Awdal	2	5	3	0	5	0	1	0
Bakool	1	6	8	0	9	1	1	4
Banadir	8	17	26	3	21	14	2	18
Bari	3	20	4	1	8	4	7	3
Bay	4	7	21	2	12	3	1	13
Galgaduud	2	11	4	0	9	2	3	5
Gedo	7	15	9	1	11	4	1	20
Hiraan	3	11	8	1	8	3	2	4
Lower Juba	3	11	10	0	6	4	5	14
Middle Juba	0	2	4	0	0	0	0	0
Lower Shabelle	5	9	9	1	9	5	1	11
Middle Shabelle	7	11	8	0	4	5	1	7
Mudug	4	11	10	0	7	5	3	5
Nugaal	3	9	5	0	5	1	0	3
Sanaag	3	10	3	0	4	0	1	2
Sool	2	8	1	0	6	0	0	1
Togdheer	2	7	5	0	6	0	1	0
Woqooyi Galbeed	2	5	7	1	6	1	3	3

Note: The map will be continuously updated as new information becomes available. The map does not reflect all Protection Cluster partners.



**Map Symbols**

- National capital
- Coastline
- International boundary
- Somali disputed border
- Regional boundary
- District boundary

**Number of implementing partners per district**

- 1 - 5
- 6 - 10
- 11 - 15
- 16 - 25
- Above 25
- No partner reported

**Map Reference:** 150818\_3W\_Operational\_Activities\_Somalia  
**Creation Date:** 26/08/2015  
**Projection/Datum:** Geographic/WGS 84  
**Web Resources:** <http://www.unocha.org/somalia>  
**E-mail:** [ochasomaliainfo@un.org](mailto:ochasomaliainfo@un.org)  
**Nominal Scale at A3 paper size:** 1:7,420,000

0 200 400 kms

**Map data source(s):**  
 All Admin. layers: UNDP Somalia (1998)  
 3W data: Clusters

**Disclaimers:**  
 The designations employed and the presentation of material on this map do not imply the expression of any opinion whatsoever on the part of the Secretariat of the United Nations concerning the legal status of any country, territory, city or area or of its authorities, or concerning the delimitation of its frontiers or boundaries.