

Statistical Report on UNHCR Registered Iraqis and Non-Iraqis Iraq, Egypt, Iran, Jordan, Lebanon, Syria, Turkey, and the GCC countries

Table of Contents

Page	Report
1	Table of Contents
2	Regional Iraqi Monthly Statistical Report
3	Iraq All Active Population Report
4	Egypt All Active Population Report
5	Egypt Iraqi Monthly Statistical Report
6	Iran All Active Population Report
7	Iran Iraqi Monthly Statistical Report
8	Jordan All Active Population Report
9	Jordan Iraqi Monthly Statistical Report
10	Lebanon All Active Population Report
11	Lebanon Iraqi Monthly Statistical Report
12	Syria All Active Population Report
13	Syria Iraqi Monthly Statistical Report
14	Turkey All Active Population Report
15	Turkey Iraqi Monthly Statistical Report
16	GCC All Active Population Report
17	GCC Iraqi Monthly Statistical Report

30-Sep-11 **176,694**

Registered Iraqi Population Trends

	Beginning of year/month	End of year/month	Increases		Decreases					Adjustments (due to retro-active data entry)
			New Registration	Reactivated/ Reopened	Resettlement Departure	Voluntary Repatriation Departure	Own Departure (Return/3rd Country)	Inactivated (No Contact)	Other Closures (Death, Withdrawal)	
2007	73,524	233,535	168,402	1,897	3,613	5	740	813	5,087	
2008	233,535	310,413	103,151	1,795	17,903	943	1,907	4,133	3,236	
2009	310,413	228,050	50,047	2,867	22,739	1,559	2,275	104,758	3,945	
2010	228,050	194,239	39,587	6,008	16,173	530	3,064	55,393	4,851	605
2011										
January	194,239	197,216	4,154	538	963	65	251	346	251	166
February	197,216	199,179	3,525	420	818	52	236	610	814	555
March	199,179	201,451	3,582	523	466	45	363	602	762	425
April	201,451	202,408	2,444	298	381	56	343	447	496	(27)
May	202,408	188,599	2,739	388	698	104	436	15,172	380	(147)
June	188,599	189,534	2,264	361	698	131	400	348	515	339
July	189,534	189,783	2,108	325	654	173	380	402	425	(160)
August	189,783	175,761	2,360	348	1,004	185	380	15,094	379	305
September	175,761	176,694	2,697	578	820	355	498	271	270	(140)
October	176,694									
November										
December										
Sub Total			25,873	3,779	6,502	1,166	3,287	33,292	4,292	1,316

Demography, place of origin and specific protection/assistance needs of the currently active Iraqis

Individuals

Female	87,932	49.8%
Male	88,762	50.2%
Total	176,694	

Age	0-4	5-11	12-17	18-59	60+
Female	7,504	13,296	10,887	49,104	7,141
Male	8,023	14,165	11,678	47,882	7,014
Total	15,527	27,461	22,565	96,986	14,155
	8.8%	15.5%	12.8%	54.9%	8.0%

Cases

Cases	61,367	
Female-Headed	19,816	32.3%
Single male	13,278	21.6%

Avg. case size **2.9**

Avg. case size excluding single person cases **4.1**

Governorate of Origin

Anbar	6,118	3.6%
Babylon	1,667	1.0%
Baghdad	116,009	69.0%
Diyala	3,983	2.4%
Kerbala	1,786	1.1%
Najaf	1,713	1.0%
Salah al-Din	2,538	1.5%
Wassit	923	0.5%
Ninewa	17,168	10.2%
Tameem	2,393	1.4%
Dahuk	278	0.2%
Erbil	215	0.1%
Sulaymaniyah	238	0.1%
Basrah	8,524	5.1%
Missan	542	0.3%
Muthanna	954	0.6%
Qadissiya	786	0.5%
Thi-Qar	2,227	1.3%
n/a	8,632	

% of the total place of origin with address specified

Ethnic Origin

Arab	145,644	82.4%
Armenian	1,370	0.8%
Assyrian	5,248	3.0%
Chaldean	13,946	7.9%
Kurd	3,802	2.2%
Turkmen	1,564	0.9%
Others, n/a	5,120	2.9%

Year of Arrival

Pre-2006	32,270	18.3%
2006	41,265	23.4%
2007	29,800	16.9%
2008	13,154	7.4%
2009	17,425	9.9%
2010	25,984	14.7%
2011	16,796	9.5%

Religious Background

Christianity	24,857	14.1%
Islam (Shiah)	35,202	19.9%
Islam (Sunni)	101,470	57.4%
Islam (unspecified)	8,046	4.6%
Sabeen/Mandean	4,479	2.5%
Yezidis	573	0.3%
Others, n/a	2,067	1.2%

Specific Needs

	% of the total active Iraqis	
Critical medical condition	31,396	17.8%
Persons with disabilities	4,857	2.7%
Woman at risk	8,473	4.8%
Single parent	794	0.4%
Child or adolescent at risk	3,952	2.2%
Unaccompanied or separated child	472	0.3%
Family unity	2,016	1.1%
Older person at risk	4,069	2.3%
Special legal and protection needs	8,586	4.9%
Survivor of torture	12,305	7.0%

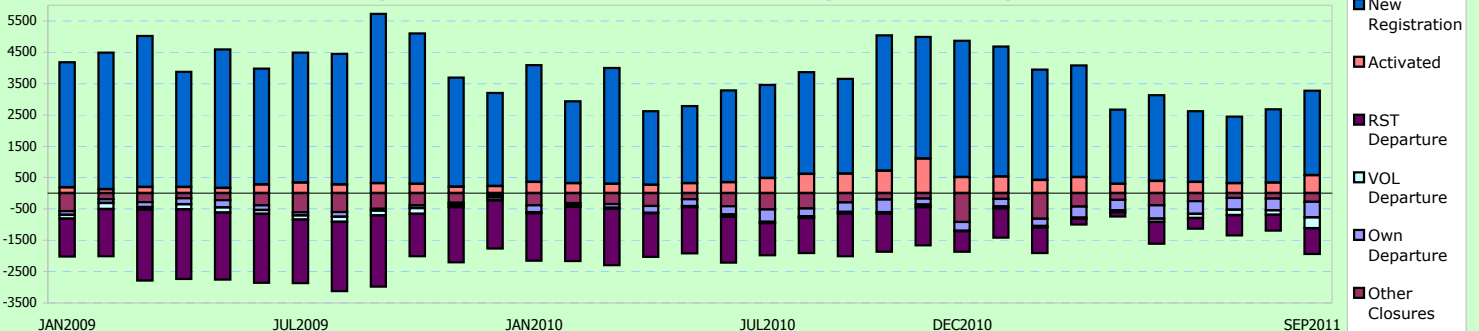
An individual can have more than one specific need
Individuals with Specific Needs: **53,489** **30.3%**

Refugees	169,944
Asylum Seekers	6,423

Others	327
--------	-----

Non-Iraqi Dependents	2,665
----------------------	-------

Active Iraqi Increase/Decrease Trends - January 2009 to to September 2011



	All Registered	Refugees	Asylum Seekers	Total Refugees & Asylum Seekers	Others
Iraqis	7,443	5,891	1,526	7,417	26
Non-Iraqis	36,797	19,118	17,652	36,770	27
Totals	44,240	25,009	19,178	44,187	53

Summary in 2011

Country of Origin and Status of Active Caseload

Country of Origin	Total	% of Total	Refugees	Asylum Seekers	Total Refugees & Asylum Seekers	Others
Sudan	24,863	56.2%	10,417	14,431	24,848	15
Iraq	7,443	16.8%	5,891	1,526	7,417	26
Somalia	7,191	16.3%	6,324	864	7,188	3
Eritrea	1,935	4.4%	1,013	918	1,931	4
Ethiopia	1,526	3.4%	615	911	1,526	-
Côte d'Ivoire	406	0.9%	288	113	401	5
Yemen	245	0.6%	208	37	245	-
DR Congo	68	0.2%	30	38	68	-
Syria	56	0.1%	9	47	56	-
Palestine	54	0.1%	26	28	54	-
Others	453	1.0%	188	265	453	-
Total	44,240	100.0%	25,009	19,178	44,187	53

Dependents of Iraqis from Other Countries

Palestine	4
Saudi Arabia	1
Turkey	1
Total	6

Note: Others are from countries apart from the top ten.

Registration in 2011

	New Registration		Reactivation/ Reopened	
	Month	Cumulative	Month	Cumulative
Iraqis	66	712	24	188
Non-Iraqis	540	4,009	20	296
Total	606	4,721	44	484

Resettlement in 2011

	Submissions		Departures	
	Month	Cumulative	Month	Cumulative
Iraqis	40	251	-	71
Non-Iraqis	166	690	16	124
Total	206	941	16	195

*Some non-Iraqis are dependents of Iraqis so are resettled with Iraqi cases.

Inactivation & Other Decreases in 2011

	Inactivation (no contact)		Other Closures	
	Month	Cumulative	Month	Cumulative
Iraqis	3	37	8	63
Non-Iraqis	9	85	34	135
Total	12	122	42	198

Repatriation & Other Departures in 2011

	Voluntary Repatriation Assisted		Own Departure	
	Month	Cumulative	Month	Cumulative
Iraqis	58	205	16	161
Non-Iraqis	36	519	12	235
Total	94	724	28	396

Registered Iraqi Population Trends

	Beginning of year/month	End of year/month	Increases		Decreases					Adjustments (due to retro-active data entry)
			New Registration	Reactivated/ Reopened	Resettlement Departure	Voluntary Repatriation Assisted	Own Departure (Return/3rd Country)	Inactivated (No Contact)	Other Closures (Death, Withdrawal)	
2007	3,025	10,512	8,715	31	90	5	15	1	1,148	
2008	10,512	10,170	1,566	31	106	167	777	-	889	
2009	10,170	7,212	666	193	369	671	768	1,886	123	
2010	7,212	6,964	712	731	287	201	347	711	102	(43)
2011										
January	6,964	7,033	83	18	11	6	15	4	1	5
February	7,033	7,098	68	7	1	3	5	-	3	2
March	7,098	7,259	144	61	7	18	8	3	6	(2)
April	7,259	7,277	49	25	16	13	21	3	7	4
May	7,277	7,247	77	8	8	34	59	12	8	6
June	7,247	7,319	94	7	13	22	13	1	8	28
July	7,319	7,381	68	22	1	10	10	2	10	5
August	7,381	7,418	63	16	14	41	14	9	12	48
September	7,418	7,443	66	24	-	58	16	3	8	20
October	7,443									
November										
December										
Sub Total			712	188	71	205	161	37	63	116

Demography, place of origin and specific protection/assistance needs of the Currently Active Iraqis

Individuals		
Female	3,695	49.6%
Male	3,748	50.4%
Total	7,443	

Age	0-4	5-11	12-17	18-59	60+
Female	161	547	549	2,171	267
Male	167	631	555	2,130	265
Total	328	1,178	1,104	4,301	532
	4.4%	15.8%	14.8%	57.8%	7.1%

Cases		
Cases	2,928	
Female-Headed	1,034	35.3%
Single male	812	27.7%

Avg. case size 2.5

Avg. case size excluding single person cases 3.9

Governorate of Origin		
Anbar	60	1.0%
Babylon	42	0.7%
Baghdad	5,333	91.5%
Diyala	70	1.2%
Kerbala	9	0.2%
Najaf	12	0.2%
Salah al-Din	51	0.9%
Wassit	12	0.2%
Ninewa	87	1.5%
Tameem	3	0.1%
Dahuk	-	0.0%
Erbil	1	0.0%
Sulaymaniyah	-	0.0%
Basrah	109	1.9%
Missan	24	0.4%
Muthanna	1	0.0%
Qadissiya	9	0.2%
Thi-Qar	7	0.1%
n/a	1,613	

% of the total place of origin with address specified

Ethnic Origin		
Arab	6,454	86.7%
Armenian	-	0.0%
Assyrian	4	0.1%
Chaldean	16	0.2%
Kurd	49	0.7%
Turkmen	17	0.2%
Others, n/a	903	12.1%

Year of Arrival		
Pre-2006	1,529	20.5%
2006	3,391	45.6%
2007	1,110	14.9%
2008	370	5.0%
2009	305	4.1%
2010	532	7.1%
2011	206	2.8%

Religious Background		
Christianity	125	1.7%
Islam (Shiah)	999	13.4%
Islam (Sunni)	4,019	54.0%
Islam (unspecified)	2,112	28.4%
Sabeen/Mandean	-	0.0%
Yezidis	-	0.0%
Others, n/a	188	2.5%

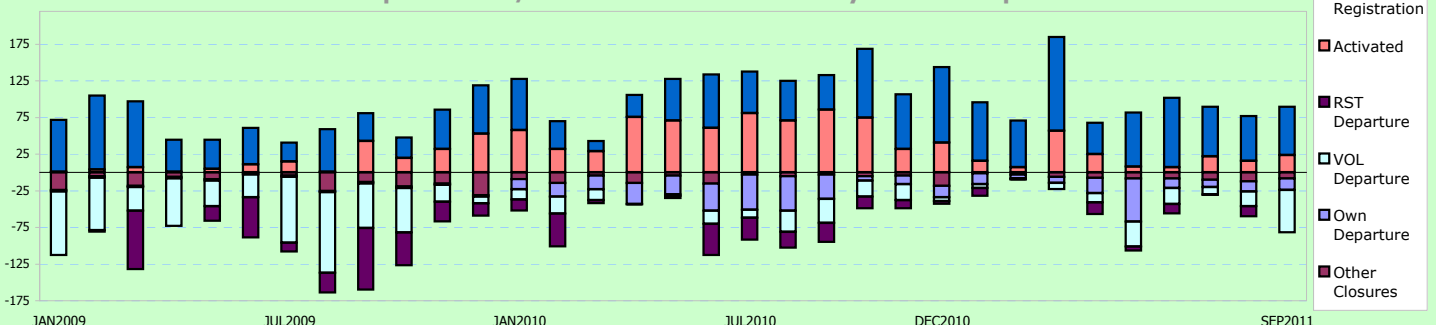
Specific Needs		% of the total active Iraqis
Critical medical condition	653	8.8%
Persons with disabilities	44	0.6%
Woman at risk	66	0.9%
Single parent	54	0.7%
Child or adolescent at risk	1	0.0%
Unaccompanied or separated child	8	0.1%
Family unity	-	0.0%
Older person at risk	99	1.3%
Special legal and protection needs	66	0.9%
Survivor of torture	4	0.1%
An individual can have more than one specific need Individuals with Specific Needs:	869	11.7%

Refugees	5,891
Asylum Seekers	1,526

Others	26
--------	----

Non-Iraqi Dependents	6
----------------------	---

Active Iraqi Increase/Decrease Trends - January 2009 to September 2011



	All Registered	Refugees	Asylum Seekers	Total Refugees & Asylum Seekers	Others
Iraqis	3,585	3,574	10	3,584	1
Non-Iraqis	11,805	10,892	887	11,779	26
Totals	15,390	14,466	897	15,363	27

*These statistics do not include the vast majority of refugees who are registered with the government but not with UNHCR-Iran. There are 41,995 Iraqi refugees and 1,026,029 Afghan refugees registered only by the government (Up to 31 March 2011).

Summary in 2011

Country of Origin and Status of Active Caseload

Country of Origin	Total	% of Total	Refugees	Asylum Seekers	Total Refugees & Asylum Seekers	Others
Afghanistan	11,666	75.8%	10,808	848	11,656	10
Iraq	3,585	23.3%	3,574	10	3,584	1
Uzbekistan	62	0.4%	55	7	62	-
Pakistan	41	0.3%	13	28	41	-
Iran	19	0.1%	3	1	4	15
Kuwait	8	0.1%	8	-	8	-
Tajikistan	3	0.0%	2	1	3	-
Morocco	1	0.0%	1	-	1	-
Kazakhstan	1	0.0%	-	-	-	1
Ethiopia	1	0.0%	1	-	1	-
Others	3	0.0%	1	2	3	-
Total	15,390	100.0%	14,466	897	15,363	27

Note: Others are from countries apart from the top ten.

Dependents of Iraqis from Other Countries

Iran	16
Sri Lanka	1
Morocco	1
Total	18

Registration in 2011

	New Registration		Reactivation/ Reopened	
	Month	Cumulative	Month	Cumulative
Iraqis	-	15	-	-
Non-Iraqis	-	-	-	-
Total	-	15	8	-

Resettlement in 2011

	Submissions		Departures	
	Month	Cumulative	Month	Cumulative
Iraqis	-	-	-	-
Non-Iraqis	-	745	-	-
Total	-	745	-	-

*Some non-Iraqis are dependents of Iraqis so are resettled with Iraqi cases.

Inactivation & Other Decreases in 2011

	Inactivation (no contact)		Other Closures	
	Month	Cumulative	Month	Cumulative
Iraqis	-	20	-	-
Non-Iraqis	2	2	-	-
Total	2	22	-	-

Repatriation & Other Departures in 2011

	Voluntary Repatriation Assisted		Own Departure	
	Month	Cumulative	Month	Cumulative
Iraqis	-	-	-	-
Non-Iraqis	-	-	-	-
Total	-	-	-	-

Registered Iraqi Population Trends

	Beginning of year/ month	End of year/ month	Increases		Decreases					Adjustments (due to retro-active data entry)
			New Registration	Reactivated/ Reopened	Resettlement Departure	Voluntary Repatriation Assisted	Own Departure (Return/3rd Country)	Inactivated (No Contact)	Other Closures (Death, Withdrawal)	
2007	735	4,466	3,822	8	93	-	-	-	6	
2008	4,466	4,775	737	15	16	-	8	406	13	
2009	4,775	4,424	80	3	38	-	6	355	35	
2010	4,424	3,590	18	2	12	-	-	798	37	(7)
2011										
January	3,590	3,586	-	-	-	-	-	4	-	-
February	3,586	3,586	-	-	-	-	-	-	-	-
March	3,586	3,582	2	-	-	-	-	6	-	-
April	3,582	3,579	1	-	-	-	-	4	-	-
May	3,579	3,577	-	-	-	-	-	2	-	-
June	3,577	3,577	9	-	-	-	-	-	-	(9)
July	3,577	3,585	3	-	-	-	-	4	-	9
August	3,585	3,585	-	-	-	-	-	-	-	-
September	3,585	3,585	-	-	-	-	-	-	-	-
October	3,585									
November										
December										
Sub Total			15	-	-	-	-	20	-	-

Demography, place of origin and specific protection/assistance needs of the Currently Active Iraqis

Individuals

Female	1,489	41.5%
Male	2,096	58.5%
Total	3,585	

Age

	0-4	5-11	12-17	18-59	60+
Female	23	278	185	894	109
Male	31	318	222	1,392	133
Total	54	596	407	2,286	242
	1.5%	16.6%	11.4%	63.8%	6.8%

Cases

Cases	1,430	
Female-Headed	208	14.5%
Single male	615	43.0%

Avg. case size 2.5

Avg. case size excluding single person cases 4.0

Governorate of Origin

Anbar	-	0.0%
Babylon	-	0.0%
Baghdad	933	71.8%
Diyala	18	1.4%
Kerbala	-	0.0%
Najaf	140	10.8%
Salah al-Din	9	0.7%
Wassit	28	2.2%
Ninewa	11	0.8%
Tameem	-	0.0%
Dahuk	2	0.2%
Erbil	5	0.4%
Sulaymaniyah	2	0.2%
Basrah	70	5.4%
Missan	12	0.9%
Muthanna	4	0.3%
Qadissiya	48	3.7%
Thi-Qar	18	1.4%
n/a	2,285	

% of the total place of origin with address specified

Ethnic Origin

Arab	2,211	61.7%
Armenian	-	0.0%
Assyrian	-	0.0%
Chaldean	-	0.0%
Kurd	291	8.1%
Turkmen	9	0.3%
Others, n/a	1,074	30.0%

Religious Background

Christianity	4	0.1%
Islam (Shiah)	2,068	57.7%
Islam (Sunni)	137	3.8%
Islam (unspecified)	24	0.7%
Sabeen/Mandean	2	0.1%
Yezidis	-	0.0%
Others, n/a	1,350	37.7%

Year of Arrival

Pre-2006	301	8.4%
2006	315	8.8%
2007	2,615	72.9%
2008	317	8.8%
2009	29	0.8%
2010	8	0.2%
2011	-	0.0%

Specific Needs % of the total active Iraqis

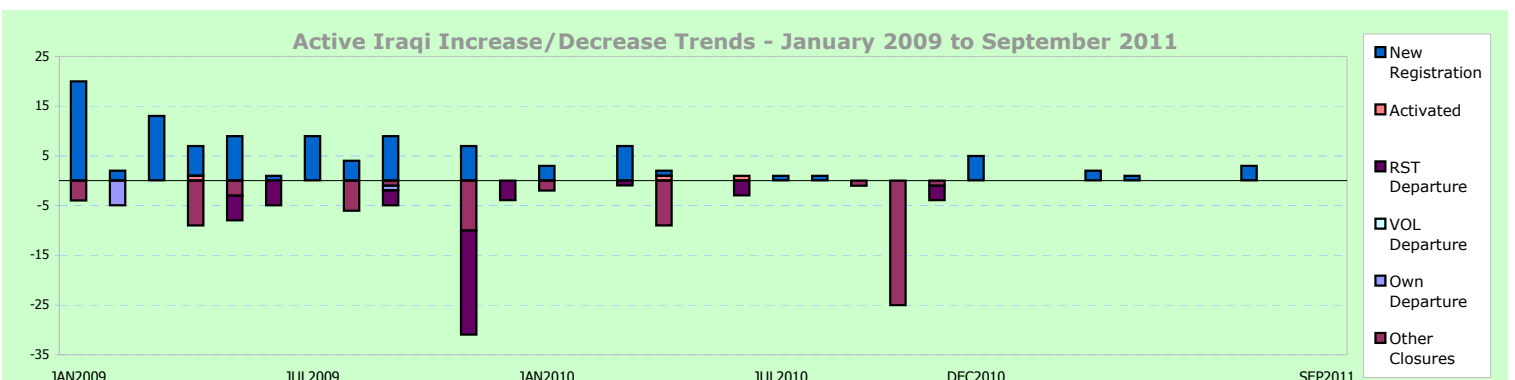
Critical medical condition	163	4.5%
Persons with disabilities	48	1.3%
Woman at risk	10	0.3%
Single parent	1	0.0%
Child or adolescent at risk	-	0.0%
Unaccompanied or separated child	-	0.0%
Family unity	1	0.0%
Older person at risk	1	0.0%
Special legal and protection needs	11	0.3%
Survivor of torture	1	0.0%

An individual can have more than one specific need
Individuals with Specific Needs: **232 6.5%**

Refugees	3,574
Asylum Seekers	10

Others	1
--------	---

Non-Iraqi Dependents	18
----------------------	----



	All Registered	Refugees	Asylum Seekers	Total Refugees & Asylum Seekers	Others
Iraqis	33,753	32,638	1,109	33,747	6
Non-Iraqis	3,119	978	1,688	2,666	453
Totals	36,872	33,616	2,797	36,413	459

Summary in 2011

Country of Origin and Status of Active Caseload

Country of Origin	Total	% of Total	Refugees	Asylum Seekers	Total Refugees & Asylum Seekers	Others
Iraq	33,753	91.5%	32,638	1,109	33,747	6
Syria	1,210	3.3%	191	1,015	1,206	4
Sudan	675	1.8%	378	295	673	2
Jordan	332	0.9%	-	-	-	332
Somalia	291	0.8%	238	53	291	-
Egypt	179	0.5%	26	120	146	33
Stateless	70	0.2%	56	14	70	-
Yemen	69	0.2%	4	64	68	1
Palestine	63	0.2%	-	-	-	63
Libya	35	0.1%	-	35	35	-
Others	195	0.5%	85	92	177	18
Total	36,872	100.0%	33,616	2,797	36,413	459

Dependents of Iraqis from Other Countries

Jordan	328
Palestine	63
Egypt	42
Syria	6
Lebanon	5
USA	3
Ukraine	3
Yemen	1
Republic of Moldova	1
Indonesia	1
Others	2
Total	455

Note: Others are from countries apart from the top ten.

Registration in 2011

	New Registration		Reactivation/ Reopened	
	Month	Cumulative	Month	Cumulative
Iraqis	772	5,744	103	828
Non-Iraqis	382	1,286	14	91
Total	1,154	7,030	117	919

Resettlement in 2011

	Submissions		Departures	
	Month	Cumulative	Month	Cumulative
Iraqis	184	2,558	138	638
Non-Iraqis	8	131	12	73
Total	192	2,689	150	711

*Some non-Iraqis are dependents of Iraqis so are resettled with Iraqi cases.

Inactivation & Other Decreases in 2011

	Inactivation (no contact)		Other Closures	
	Month	Cumulative	Month	Cumulative
Iraqis	231	2,758	33	552
Non-Iraqis	2	30	2	287
Total	233	2,788	35	839

Repatriation & Other Departures in 2011

	Voluntary Repatriation Assisted		Own Departure	
	Month	Cumulative	Month	Cumulative
Iraqis	20	76	25	196
Non-Iraqis	-	2	-	4
Total	20	78	25	200

Registered Iraqi Population Trends

	Beginning of year/ month	End of year/ month	Increases		Decreases					Adjustments (due to retro-active data entry)
			New Registration	Reactivated/ Reopened	Resettlement Departure	Voluntary Repatriation Assisted	Own Departure (Return/3rd Country)	Inactivated (No Contact)	Other Closures (Death, Withdrawal)	
2007	21,999	50,635	31,088	392	1,429	-	62	37	1,316	
2008	50,635	52,443	9,790	427	6,639	103	530	18	1,119	
2009	52,443	38,744	6,849	455	5,462	274	813	13,598	856	
2010	38,744	31,476	7,983	1,066	3,444	107	507	11,334	1,419	494
2011										
January	31,476	32,117	919	118	119	11	24	228	32	18
February	32,117	32,360	703	99	107	10	32	407	38	35
March	32,360	32,506	680	98	32	4	29	423	140	(4)
April	32,506	32,421	367	63	42	8	15	341	117	8
May	32,421	32,551	443	97	66	9	13	283	48	9
June	32,551	32,683	477	58	47	6	11	234	93	(12)
July	32,683	32,952	618	74	87	8	14	285	31	2
August	32,952	33,320	765	118	137	-	33	326	20	1
September	33,320	33,753	772	103	138	20	25	231	33	5
October	33,753									
November										
December										
Sub Total			5,744	828	775	76	196	2,758	552	62

Demography, place of origin and specific protection/assistance needs of the Currently Active Iraqis

Individuals		
Female	16,501	48.9%
Male	17,252	51.1%
Total	33,753	

Age	0-4	5-11	12-17	18-59	60+
Female	1,502	2,244	1,619	9,369	1,767
Male	1,617	2,326	1,786	10,070	1,453
Total	3,119	4,570	3,405	19,439	3,220
	9.2%	13.5%	10.1%	57.6%	9.5%

Cases		
Cases	14,121	
Female-Headed	4,500	31.9%
Single male	3,801	26.9%

Avg. case size 2.4

Avg. case size excluding single person cases 3.7

Governorate of Origin		
Anbar	945	2.9%
Babylon	398	1.2%
Baghdad	25,350	76.8%
Diyala	725	2.2%
Kerbala	180	0.5%
Najaf	233	0.7%
Salah al-Din	417	1.3%
Wassit	209	0.6%
Ninewa	1,117	3.4%
Tameem	308	0.9%
Dahuk	46	0.1%
Erbil	79	0.2%
Sulaymaniyah	81	0.2%
Basrah	1,517	4.6%
Missan	77	0.2%
Muthanna	548	1.7%
Qadissiya	156	0.5%
Thi-Qar	627	1.9%
n/a	740	

% of the total place of origin with address specified

Ethnic Origin		
Arab	29,839	88.4%
Armenian	268	0.8%
Assyrian	562	1.7%
Chaldean	1,608	4.8%
Kurd	888	2.6%
Turkmen	216	0.6%
Others, n/a	372	1.1%

Year of Arrival		
Pre-2006	7,211	21.4%
2006	5,865	17.4%
2007	3,877	11.5%
2008	2,197	6.5%
2009	3,617	10.7%
2010	6,486	19.2%
2011	4,500	13.3%

Religious Background		
Christianity	3,527	10.4%
Islam (Shiah)	7,787	23.1%
Islam (Sunni)	21,853	64.7%
Islam (unspecified)	63	0.2%
Sabeen/Mandean	431	1.3%
Yezidis	35	0.1%
Others, n/a	57	0.2%

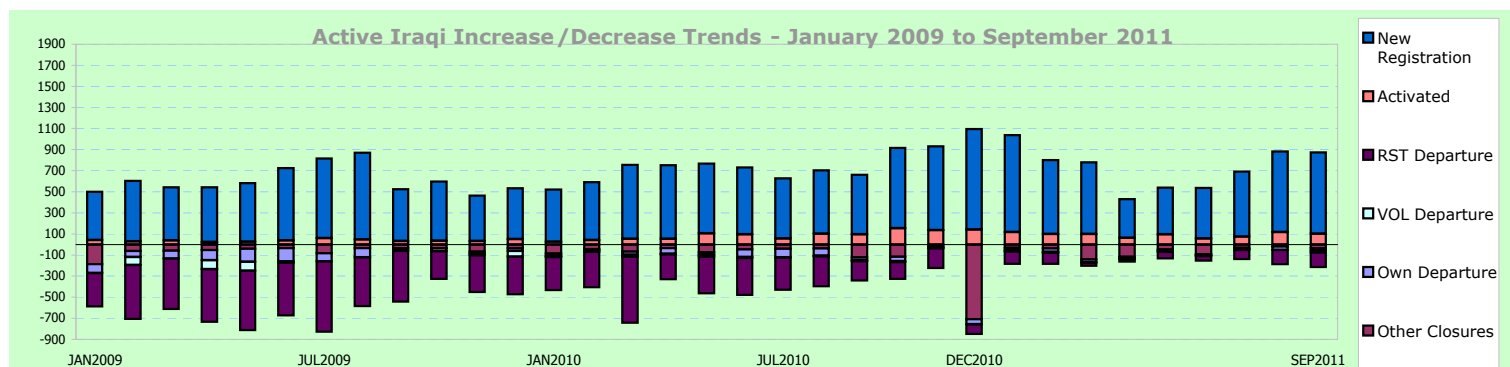
Specific Needs		% of the total active Iraqis
Critical medical condition	4,247	12.6%
Persons with disabilities	901	2.7%
Woman at risk	795	2.4%
Single parent	60	0.2%
Child or adolescent at risk	34	0.1%
Unaccompanied or separated child	76	0.2%
Family unity	57	0.2%
Older person at risk	450	1.3%
Special legal and protection needs	1,731	5.1%
Survivor of torture	665	2.0%

An individual can have more than one specific need
Individuals with Specific Needs: 7,245 21.5%

Refugees	32,638
Asylum Seekers	1,109

Others	6
--------	---

Non-Iraqi Dependents	455
----------------------	-----



	All Registered	Refugees	Asylum Seekers	Total Refugees & Asylum Seekers	Others
Iraqis	9,436	8,626	803	9,429	7
Non-Iraqis	1,859	321	876	1,197	662
Totals	11,295	8,947	1,679	10,626	669

Summary in 2011

Country of Origin and Status of Active Caseload

Country of Origin	Total	% of Total	Refugees	Asylum Seekers	Total Refugees & Asylum Seekers	Others
Iraq	9,436	83.5%	8,626	803	9,429	7
Sudan	644	5.7%	151	484	635	9
Lebanon	526	4.7%	2	6	8	518
Syria	358	3.2%	55	268	323	35
Egypt	41	0.4%	10	29	39	2
Jordan	35	0.3%	16	17	33	2
Somalia	32	0.3%	18	10	28	4
Iran	32	0.3%	28	3	31	1
Palestine	30	0.3%	3	-	3	27
Ethiopia	26	0.2%	-	6	6	20
Others	135	1.2%	38	53	91	44
Total	11,295	100.0%	8,947	1,679	10,626	669

Dependents of Iraqis from Other Countries

Lebanon	512
Syria	29
Palestine	25
Philippines	16
Ethiopia	5
Sri Lanka	5
Canada	4
Sudan	3
Jordan	2
Egypt	2
Others	10
Total	612

Note: Others are from countries apart from the top ten.

Registration in 2011

	New Registration		Reactivation/ Reopened	
	Month	Cumulative	Month	Cumulative
Iraqis	772	2,389	103	100
Non-Iraqis	382	1,286	14	91
Total	1,154	3,675	117	191

Resettlement in 2011

	Submissions		Departures	
	Month	Cumulative	Month	Cumulative
Iraqis	167	2,437	138	491
Non-Iraqis	6	140	12	73
Total	173	2,577	150	564

*Some non-Iraqis are dependents of Iraqis so are resettled with Iraqi cases.

Inactivation & Other Decreases in 2011

	Inactivation (no contact)		Other Closures	
	Month	Cumulative	Month	Cumulative
Iraqis	231	483	33	228
Non-Iraqis	2	30	2	287
Total	233	513	35	515

Repatriation & Other Departures in 2011

	Voluntary Repatriation Assisted		Own Departure	
	Month	Cumulative	Month	Cumulative
Iraqis	20	88	25	92
Non-Iraqis	-	-	-	4
Total	20	88	25	96

Registered Iraqi Population Trends

	Beginning of year/ month	End of year/ month	Increases		Decreases				Adjustments (due to retro-active data entry)	
			New Registration	Reactivated/ Reopened	Resettlement Departure	Voluntary Repatriation Assisted	Own Departure (Return/3rd Country)	Inactivated (No Contact)		Other Closures (Death, Withdrawal)
2007	4,090	9,804	6,449	25	416	-	218	14	112	
2008	9,804	10,268	2,012	37	1,298	-	141	44	166	
2009	10,268	8,748	2,875	49	2,481	-	89	1,761	113	
2010	8,748	8,285	3,365	191	1,845	47	102	1,878	133	(14)
2011										
January	8,285	8,626	439	14	17	22	10	45	19	1
February	8,626	8,818	451	16	110	3	4	120	45	7
March	8,818	9,070	431	10	25	7	18	74	65	-
April	9,070	9,272	248	14	8	1	10	35	10	4
May	9,272	9,393	215	11	29	4	5	54	18	5
June	9,393	9,473	184	5	58	10	13	34	5	11
July	9,473	9,384	98	13	73	14	13	60	36	(4)
August	9,384	9,387	171	11	93	10	17	49	20	10
September	9,387	9,436	152	6	78	17	2	12	10	10
October	9,436									
November										
December										
Sub Total			2,389	100	491	88	92	483	228	44

Demography, place of origin and specific protection/assistance needs of the Currently Active Iraqis

Individuals		
Female	3,734	39.6%
Male	5,702	60.4%
Total	9,436	

Age	0-4	5-11	12-17	18-59	60+
Female	480	587	374	2,113	180
Male	562	663	448	3,830	199
Total	1,042	1,250	822	5,943	379
	11.0%	13.2%	8.7%	63.0%	4.0%

Cases		
Cases	3,786	
Female-Headed	414	10.9%
Single male	1,469	38.8%

Avg. case size **2.6**

Avg. case size excluding single person cases **3.9**

Governorate of Origin		
Anbar	66	0.8%
Babylon	119	1.4%
Baghdad	5,142	61.7%
Diyala	190	2.3%
Kerbala	172	2.1%
Najaf	171	2.1%
Salah al-Din	18	0.2%
Wassit	141	1.7%
Ninewa	1,567	18.8%
Tameem	103	1.2%
Dahuk	21	0.3%
Erbil	10	0.1%
Sulaymaniyah	7	0.1%
Basrah	282	3.4%
Missan	37	0.4%
Muthanna	55	0.7%
Qadissiya	85	1.0%
Thi-Qar	144	1.7%
no data	1,106	

% of the total place of origin with address specified

Ethnic Origin		
Arab	4,288	45.4%
Armenian	122	1.3%
Assyrian	270	2.9%
Chaldean	3,458	36.6%
Kurd	69	0.7%
Turkmen	14	0.1%
Others, n/a	1,215	12.9%

Year of Arrival		
Pre-2006	1,563	16.6%
2006	668	7.1%
2007	620	6.6%
2008	480	5.1%
2009	1,788	18.9%
2010	2,899	30.7%
2011	1,418	15.0%

Religious Background		
Christianity	4,856	51.5%
Islam (Shiah)	3,054	32.4%
Islam (Sunni)	1,267	13.4%
Islam (unspecified)	188	2.0%
Sabeen/Mandean	18	0.2%
Yezidis	9	0.1%
Others, n/a	44	0.5%

Specific Needs		% of the total active Iraqis
Critical medical condition	381	4.0%
Persons with disabilities	133	1.4%
Woman at risk	159	1.7%
Single parent	14	0.1%
Child or adolescent at risk	37	0.4%
Unaccompanied or separated child	14	0.1%
Family unity	-	0.0%
Older person at risk	81	0.9%
Special legal and protection needs	55	0.6%
Survivor of torture	23	0.2%

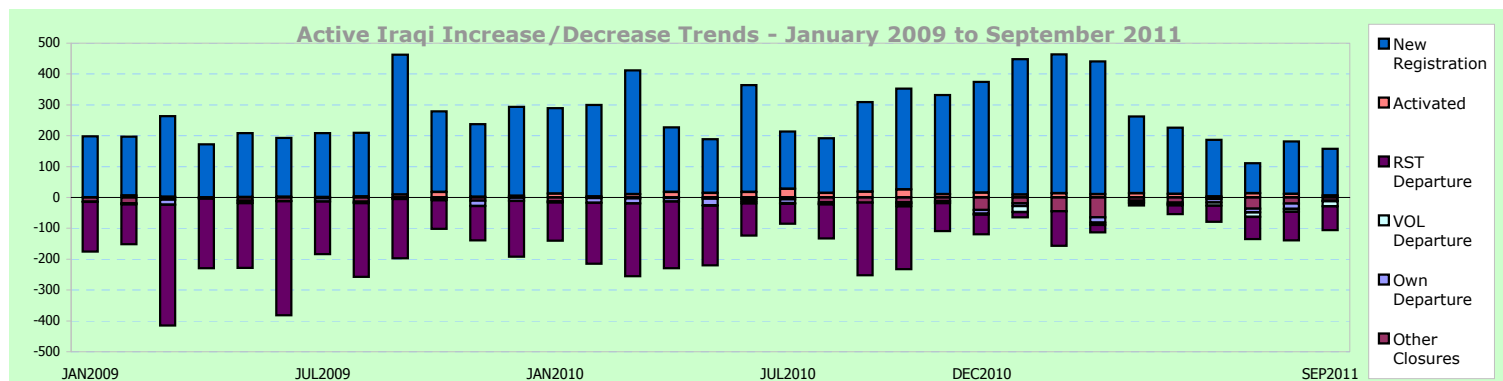
An individual can have more than one specific need

Individuals with Specific Needs: **825 8.7%**

Refugees	8,626
Asylum Seekers	803

Others	7
--------	---

Non-Iraqi Dependents	612
----------------------	-----



	All Registered	Refugees	Asylum Seekers	Total Refugees & Asylum Seekers	Others
Iraqis	112,809	111,871	654	112,525	284
Non-Iraqis	8,698	5,841	1,459	7,300	1,398
Totals	121,507	117,712	2,113	119,825	1,682

Summary in 2011

Country of Origin and Status of Active Caseload

Country of Origin	Total	% of Total	Refugees	Asylum Seekers	Total Refugees & Asylum Seekers	Others
Iraq	112,809	92.8%	111,871	654	112,525	284
Somalia	3,117	2.6%	2,783	328	3,111	6
Afghanistan	2,130	1.8%	1,796	329	2,125	5
Syria	1,255	1.0%	10	-	10	1,245
Sudan	940	0.8%	599	332	931	9
Iran	292	0.2%	180	108	288	4
Yemen	168	0.1%	61	106	167	1
Jordan	106	0.1%	45	25	70	36
Palestine	95	0.1%	49	12	61	34
Stateless	84	0.1%	62	16	78	6
Others	511	0.4%	256	203	459	52
Total	121,507	100.0%	117,712	2,113	119,825	1,682

Dependents of Iraqis from Other Countries

Syria	1,221
Jordan	74
Lebanon	43
Palestine	43
Egypt	28
Iran	21
Sudan	18
Saudi Arabia	14
Morocco	12
Algeria	7
Others	39
Total	1,517

Note: Others are from countries apart from the top ten.

Registration in 2011				
	New Registration		Reactivation/ Reopened	
	Month	Cumulative	Month	Cumulative
Iraqis	1,244	12,548	437	2,581
Non-Iraqis	97	1,384	23	195
Total	1,341	13,932	460	2,776

Resettlement in 2011				
	Submissions		Departures	
	Month	Cumulative	Month	Cumulative
Iraqis	80	8,468	191	3,324
Non-Iraqis	4	239	14	175
Total	84	8,707	205	3,499

*Some non-Iraqis are dependents of Iraqis so are resettled with Iraqi cases.

Inactivation & Other Decreases in 2011				
	Inactivation (no contact)		Other Closures	
	Month	Cumulative	Month	Cumulative
Iraqis	25	29,989	178	3,244
Non-Iraqis	1	821	311	472
Total	26	30,810	489	3,716

Repatriation & Other Departures in 2011				
	Voluntary Repatriation Assisted		Own Departure	
	Month	Cumulative	Month	Cumulative
Iraqis	260	797	397	2,474
Non-Iraqis	1	8	3	49
Total	261	805	400	2,523

Registered Iraqi Population Trends

	Beginning of year/month	End of year/month	Increases		Decreases				Adjustments (due to retro-active data entry)	
			New Registration	Reactivated/ Reopened	Resettlement Departure	Voluntary Repatriation Assisted	Own Departure (Return/3rd Country)	Inactivated (No Contact)		Other Closures (Death, Withdrawal)
2007	40,858	152,861	114,387	1,303	605	-	-	753	2,329	
2008	152,861	223,584	81,764	1,210	7,405	673	12	3,660	501	
2009	223,584	161,001	35,436	2,052	10,167	607	6	87,135	2,156	
2010	161,001	136,354	23,108	3,902	6,858	175	1,350	40,634	2,824	184
2011										
January	136,354	137,859	2,103	376	700	26	158	63	180	153
February	137,859	139,153	1,850	280	364	36	156	83	717	520
March	139,153	140,633	1,833	346	270	16	229	96	528	440
April	140,633	141,157	1,324	192	259	34	248	64	346	(41)
May	141,157	127,097	1,609	260	297	57	320	14,821	273	(161)
June	127,097	127,401	1,033	278	452	93	333	79	382	332
July	127,401	127,047	776	215	290	141	328	51	327	(208)
August	127,047	112,331	776	197	501	134	305	14,707	313	271
September	112,331	112,809	1,244	437	191	260	397	25	178	(152)
October	112,809									
November										
December										
Sub Total			12,548	2,581	3,324	797	2,474	29,989	3,244	1,154

Demography, place of origin and specific protection/assistance needs of the Currently Active Iraqis

Individuals		
Female	58,305	51.7%
Male	54,504	48.3%
Total	112,809	

Age	0-4	5-11	12-17	18-59	60+
Female	4,893	9,021	7,734	32,077	4,580
Male	5,188	9,501	8,145	26,968	4,702
Total	10,081	18,522	15,879	59,045	9,282
	8.9%	16.4%	14.1%	52.3%	8.2%

Cases		
Cases	34,731	
Female-Headed	12,744	36.7%
Single male	4,768	13.7%

Avg. case size 3.3

Avg. case size excluding single person cases 4.2

Governorate of Origin		
Anbar	5,022	4.5%
Babylon	1,078	1.0%
Baghdad	74,559	66.8%
Diyala	2,911	2.6%
Kerbala	1,374	1.2%
Najaf	1,132	1.0%
Salah al-Din	1,992	1.8%
Wassit	518	0.5%
Ninewa	12,910	11.6%
Tameem	1,055	0.9%
Dahuk	168	0.2%
Erbil	97	0.1%
Sulaymaniyah	84	0.1%
Basrah	6,118	5.5%
Missan	379	0.3%
Muthanna	336	0.3%
Qadissiya	481	0.4%
Thi-Qar	1,390	1.2%
n/a	1,205	

% of the total place of origin with address specified

Ethnic Origin		
Arab	98,108	87.0%
Armenian	789	0.7%
Assyrian	3,435	3.0%
Chaldean	6,725	6.0%
Kurd	2,009	1.8%
Turkmen	439	0.4%
Others, n/a	1,304	1.2%

Religious Background		
Christianity	12,889	11.4%
Islam (Shiah)	20,074	17.8%
Islam (Sunni)	71,002	62.9%
Islam (unspecified)	4,121	3.7%
Sabeen/Mandean	3,995	3.5%
Yezidis	509	0.5%
Others, n/a	219	0.2%

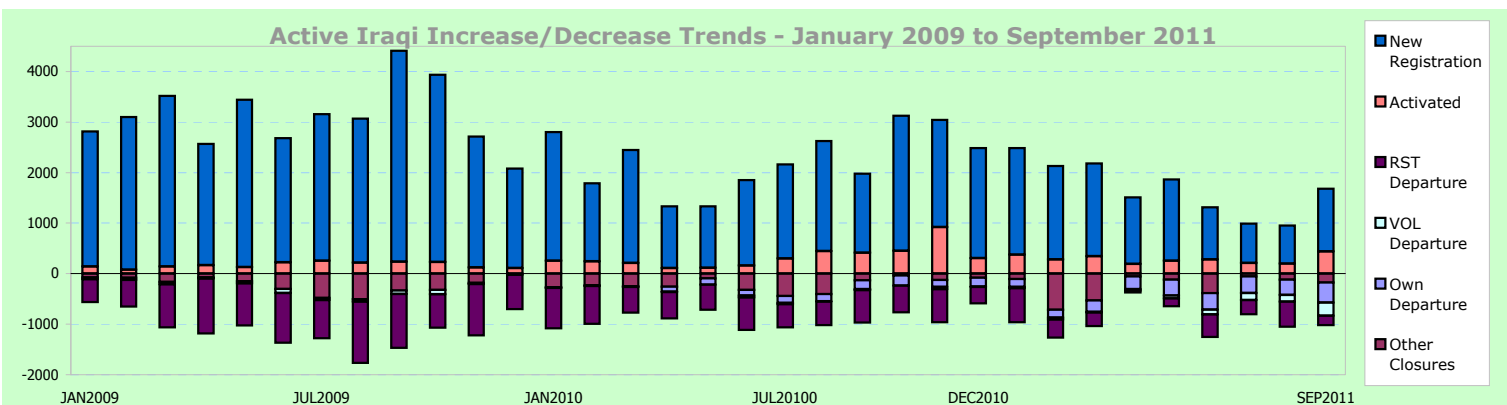
Year of Arrival		
Pre-2006	20,325	18.0%
2006	30,320	26.9%
2007	20,850	18.5%
2008	9,268	8.2%
2009	11,225	10.0%
2010	13,692	12.1%
2011	7,129	6.3%

Specific Needs		% of the total active Iraqis
Critical medical condition	25,655	22.7%
Persons with disabilities	3,593	3.2%
Woman at risk	7,354	6.5%
Single parent	649	0.6%
Child or adolescent at risk	3,877	3.4%
Unaccompanied or separated child	351	0.3%
Family unity	1,954	1.7%
Older person at risk	3,354	3.0%
Special legal and protection needs	6,621	5.9%
Survivor of torture	11,600	10.3%
Individuals with Specific Needs:	43,596	38.6%

Refugees	111,871
Asylum Seekers	654

Others	284
--------	-----

Non-Iraqi Dependents	1,517
----------------------	-------



	All Registered	Refugees	Asylum Seekers	Total Refugees & Asylum Seekers	Others
Iraqis	7,625	6,383	1,240	7,623	2
Non-Iraqis	12,964	6,753	6,179	12,932	32
Totals	20,589	13,136	7,419	20,555	34

Summary in 2011

Country of Origin and Status of Active Caseload

Country of Origin	Total	% of Total	Refugees	Asylum Seekers	Total Refugees & Asylum Seekers	Others
Iraq	7,625	37.0%	6,383	1,240	7,623	2
Iran	4,720	22.9%	2,830	1,871	4,701	19
Afghanistan	4,548	22.1%	2,312	2,227	4,539	9
Somalia	1,575	7.6%	1,066	509	1,575	-
Kyrgyzstan	317	1.5%	-	317	317	-
Syria	284	1.4%	36	248	284	-
Uzbekistan	220	1.1%	47	173	220	-
Sudan	213	1.0%	151	62	213	-
Palestine	138	0.7%	86	52	138	-
Unknown	114	0.6%	-	114	114	-
Eritrea	82	0.4%	55	27	82	-
Others	754	3.7%	170	580	750	4
Total	20,589	100.0%	13,136	7,419	20,555	34

Dependents of Iraqis from Other Countries

Syria	6
Afghanistan	2
Iran	2
Lebanon	2
Palestine	2
Jordan	1
Morocco	1
Somalia	1
Total	17

Note: Others are from countries apart from the top ten.

Registration in 2011

	New Registration		Reactivation/ Reopened	
	Month	Cumulative	Month	Cumulative
Iraqis	450	4,063	8	70
Non-Iraqis	905	5,246	22	644
Total	1,355	9,309	30	714

Resettlement in 2011

	Submissions		Departures	
	Month	Cumulative	Month	Cumulative
Iraqis	272	2,620	412	1,372
Non-Iraqis	263	1,961	210	1,515
Total	535	4,581	622	2,887

*Some non-Iraqis are dependents of Iraqis so are resettled with Iraqi cases.

Inactivation & Other Decreases in 2011

	Inactivation (no contact)		Other Closures	
	Month	Cumulative	Month	Cumulative
Iraqis	-	4	35	185
Non-Iraqis	5	111	112	1,870
Total	5	115	147	2,055

Repatriation & Other Departures in 2011

	Voluntary Repatriation Assisted		Own Departure	
	Month	Cumulative	Month	Cumulative
Iraqis	-	-	58	349
Non-Iraqis	-	-	5	146
Total	-	-	63	495

Registered Iraqi Population Trends

	Beginning of year/month	End of year/month	Increases		Decreases				Other Closures (Death, Withdrawal)	Adjustments (due to retro-active data entry)
			New Registration	Reactivated/ Reopened	Resettlement Departure	Voluntary Repatriation Assisted	Own Departure (Return/3rd Country)	Inactivated (No Contact)		
2007	2,625	4,660	3,486	138	980	-	445	8	156	
2008	4,660	8,274	6,900	74	2,414	-	438	3	505	
2009	8,274	6,805	3,763	73	4,183	7	526	23	566	
2010	6,805	5,876	3,657	92	3,564	-	741	38	314	(21)
2011										
January	5,876	6,223	526	12	116	-	44	1	19	(11)
February	6,223	6,374	416	12	224	-	33	-	11	(9)
March	6,374	6,591	436	8	123	-	73	-	22	(9)
April	6,591	6,838	364	4	54	-	49	-	16	(2)
May	6,838	6,842	360	12	291	-	38	-	33	(6)
June	6,842	7,080	412	7	123	-	30	-	17	(11)
July	7,080	7,418	516	1	183	-	13	-	19	36
August	7,418	7,696	583	6	258	-	11	3	13	(26)
September	7,696	7,625	450	8	412	-	58	-	35	(24)
October	7,625									
November										
December										
Sub Total			4,063	70	1,784	-	349	4	185	(62)

Demography, place of origin and specific protection/assistance needs of the Currently Active Iraqis

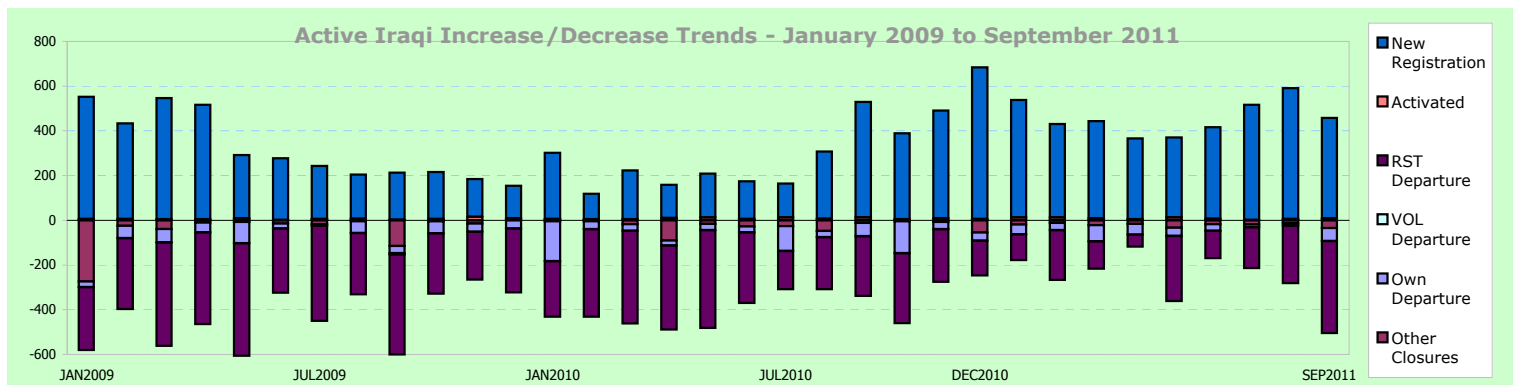
Individuals		Age	0-4	5-11	12-17	18-59	60+
Female	3,224 42.3%	Female	347	485	334	1,885	173
Male	4,401 57.7%	Male	380	577	423	2,826	195
Total	7,625	Total	727	1,062	757	4,711	368
			9.5%	13.9%	9.9%	61.8%	4.8%

Cases	Female-Headed	Single male	Avg. case size	Avg. case size excluding single person cases
Cases	3,653	790	2.1	3.7
Female-Headed	21.6%			
Single male	43.7%			

Governorate of Origin		Ethnic Origin		Religious Background	
Anbar	19 0.3%	Arab	2,924 38.3%	Christianity	3,388 44.4%
Babylon	22 0.3%	Armenian	182 2.4%	Islam (Shiah)	879 11.5%
Baghdad	4,023 58.3%	Assyrian	974 12.8%	Islam (Sunni)	2,367 31.0%
Diyala	65 0.9%	Chaldean	2,135 28.0%	Islam (unspecified)	849 11.1%
Kerbala	42 0.6%	Kurd	454 6.0%	Sabeen/Mandean	31 0.4%
Najaf	15 0.2%	Turkmen	867 11.4%	Yezidis	20 0.3%
Salah al-Din	45 0.7%	Others, n/a	89 1.2%	Others, n/a	91 1.2%
Wassit	7 0.1%				
Ninewa	1,466 21.2%				

Year of Arrival		Specific Needs	
Pre-2006	392 5.1%	Critical medical condition	265 3.5%
2006	239 3.1%	Persons with disabilities	126 1.7%
2007	426 5.6%	Woman at risk	87 1.1%
2008	337 4.4%	Single parent	16 0.2%
2009	388 5.1%	Child or adolescent at risk	1 0.0%
2010	2,316 30.4%	Unaccompanied or separated child	23 0.3%
2011	3,527 46.3%	Family unity	4 0.1%
		Older person at risk	84 1.1%
		Special legal and protection needs	56 0.7%
		Survivor of torture	9 0.1%

Refugees		Others		Non-Iraqi Dependents	
Refugees	6,383	Others	2	Non-Iraqi Dependents	-
Asylum Seekers	1,240				



	All Registered	Refugees	Asylum Seekers	Total Refugees & Asylum Seekers	Others
Iraqis	2,043	961	1,081	2,042	1
Non-Iraqis	1,370	742	607	1,349	21
Totals	3,413	1,703	1,688	3,391	22

Summary in 2011

Country of Origin and Status of Active Caseload

Country of Origin	Total	% of Total	Refugees	Asylum Seekers	Total Refugees & Asylum Seekers	Others
Iraq	2,043	59.9%	961	1,081	2,042	1
Eritrea	381	11.2%	377	4	381	-
Somalia	244	7.1%	67	176	243	1
Iran	176	5.2%	47	129	176	-
Afghanistan	126	3.7%	1	125	126	-
Syria	109	3.2%	76	33	109	-
Sudan	90	2.6%	51	39	90	-
Palestine	53	1.6%	34	19	53	-
Liberia	27	0.8%	27	-	27	-
China	18	0.5%	14	4	18	-
Others	146	4.3%	48	78	126	20
Total	3,413	100.0%	1,703	1,688	3,391	22

Dependents of Iraqis from Other Countries

Kuwait	17
Jordan	10
Syria	8
Bahrain	5
Iran	5
Lebanon	3
Sri Lanka	2
Stateless	2
Philippines	2
Russia	1
Others	3
Total	57

Note: Others are from countries apart from the top ten.

Registration in 2011				
	New Registration		Reactivation/ Reopened	
	Month	Cumulative	Month	Cumulative
Iraqis	13	402	-	12
Non-Iraqis	5	114	-	8
Total	18	516	-	20

Resettlement in 2011				
	Submissions		Departures	
	Month	Cumulative	Month	Cumulative
Iraqis	16	130	1	57
Non-Iraqis	-	34	5	25
Total	16	164	6	82

*Some non-Iraqis are dependents of Iraqis so are resettled with Iraqi cases.

Inactivation & Other Decreases in 2011				
	Inactivation (no contact)		Other Closures	
	Month	Cumulative	Month	Cumulative
Iraqis	-	1	6	20
Non-Iraqis	-	7	-	21
Total	-	8	6	41

Repatriation & Other Departures in 2011				
	Voluntary Repatriation Assisted		Own Departure	
	Month	Cumulative	Month	Cumulative
Iraqis	-	-	-	15
Non-Iraqis	-	-	-	2
Total	-	-	-	17

30-Sep-11 **2,043**

Registered Iraqi Population Trends

Bahrain: 307, Kuwait: 933, Oman: 112, Qatar: 96, UAE: 513, Saudi Arabia: 82

	Beginning of year/month	End of year/month	Increases		Decreases					Adjustments (due to retro-active data entry)
			New Registration	Reactivated/ Reopened	Resettlement Departure	Voluntary Repatriation Assisted	Own Departure (Return/3rd Country)	Inactivated (No Contact)	Other Closures (Death, Withdrawal)	
2007	192	597	455	-	-	-	-	-	20	-
2008	597	899	382	1	25	-	1	2	43	-
2009	899	1,116	378	42	39	-	67	-	96	-
2010	1,116	1,694	744	24	163	-	17	-	22	12
2011										
January	1,694	1,772	84	-	-	-	-	1	-	-
February	1,772	1,790	37	6	12	-	6	-	-	-
March	1,790	1,810	56	-	9	-	6	-	1	-
April	1,810	1,864	91	-	2	-	-	-	-	-
May	1,864	1,892	35	-	7	-	1	-	-	-
June	1,892	2,001	55	6	5	-	-	-	10	-
July	2,001	2,016	29	-	20	-	2	-	2	-
August	2,016	2,024	2	-	1	-	-	-	1	1
September	2,024	2,043	13	-	1	-	-	-	6	1
October	2,043									
November										
December										
Sub Total			402	12	57	-	15	1	20	2

Demography, place of origin and specific protection/assistance needs of the Currently Active Iraqis

Individuals		Age				
		0-4	5-11	12-17	18-59	60+
Female	984 <i>48.2%</i>	98	134	92	595	65
Male	1,059 <i>51.8%</i>	78	149	99	666	67
Total	2,043	176 <i>8.6%</i>	283 <i>13.9%</i>	191 <i>9.3%</i>	1,261 <i>61.7%</i>	132 <i>6.5%</i>

Cases		Avg. case size	
Cases	718	2.9	4.1
Female-Headed	126 <i>17.5%</i>		
Single male	216 <i>30.1%</i>		

Governorate of Origin		Ethnic Origin		Religious Background	
Anbar	6 <i>0.6%</i>	Arab	1,820 <i>89.1%</i>	Christianity	68 <i>3.3%</i>
Babylon	8 <i>0.7%</i>	Armenian	9 <i>0.4%</i>	Islam (Shiah)	341 <i>16.7%</i>
Baghdad	669 <i>62.0%</i>	Assyrian	3 <i>0.1%</i>	Islam (Sunni)	825 <i>40.4%</i>
Diyala	4 <i>0.4%</i>	Chaldean	4 <i>0.2%</i>	Islam (unspecified)	689 <i>33.7%</i>
Kerbala	9 <i>0.8%</i>	Kurd	42 <i>2.1%</i>	Sabeen/Mandean	2 <i>0.1%</i>
Najaf	10 <i>0.9%</i>	Turkmen	2 <i>0.1%</i>	Yezidis	- <i>0.0%</i>
Salah al-Din	6 <i>0.6%</i>	Others, n/a	163 <i>8.0%</i>	Others, n/a	118 <i>5.8%</i>
Wassit	8 <i>0.7%</i>				
Ninewa	10 <i>0.9%</i>				
Tameem	- <i>0.0%</i>				
Dahuk	- <i>0.0%</i>				
Erbil	- <i>0.0%</i>				
Sulaymaniyah	- <i>0.0%</i>				
Basrah	327 <i>30.3%</i>				
Missan	1 <i>0.1%</i>				
Muthanna	- <i>0.0%</i>				
Qadissiya	- <i>0.0%</i>				
Thi-Qar	21 <i>1.9%</i>				
n/a	964				

Year of Arrival		Specific Needs	
Pre-2006	949 <i>46.5%</i>	Critical medical condition	32 <i>1.6%</i>
2006	467 <i>22.9%</i>	Persons with disabilities	12 <i>0.6%</i>
2007	302 <i>14.8%</i>	Woman at risk	2 <i>0.1%</i>
2008	185 <i>9.1%</i>	Single parent	- <i>0.0%</i>
2009	73 <i>3.6%</i>	Child or adolescent at risk	2 <i>0.1%</i>
2010	51 <i>2.5%</i>	Unaccompanied or separated child	- <i>0.0%</i>
2011	16 <i>0.8%</i>	Family unity	- <i>0.0%</i>
		Older person at risk	- <i>0.0%</i>
		Special legal and protection needs	46 <i>2.3%</i>
		Survivor of torture	3 <i>0.1%</i>
		An individual can have more than one specific need	
		Individuals with Specific Needs:	90 <i>4.4%</i>

Refugees	Others	Non-Iraqi Dependents
961	1	57
Asylum Seekers		
1,081		

