



803,200*

est. displaced people internally since 15 December

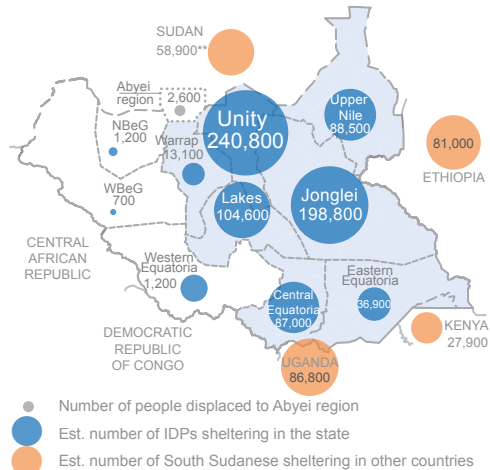
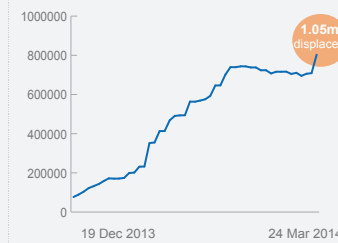


254,600**

est. people sheltering in neighbouring countries

1 MILLION PEOPLE DISPLACED IN 100 DAYS

Over one million people have had to flee their homes since the start of the conflict in South Sudan in December 2013. Aid agencies estimate that 803,200 are currently displaced within the country; sheltering across 174 different displacement sites. Another 254,600 have fled to neighbouring countries. Aid agencies launched a new rapid response model to reach displaced communities in remote locations.



1 in 10 people are internally displaced



90% of people displaced are in open or rural settings, often in hard to access areas

32% people reached with assistance

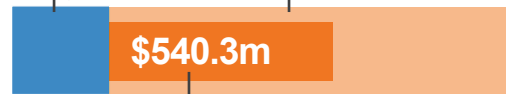


1 in 3 of 3.2 million people targeted received relief

FUNDING

\$1.27bn required before June 2014

\$315m Already met **\$956.5m** Unmet requirements



Unmet urgent requirements for repositioning

