

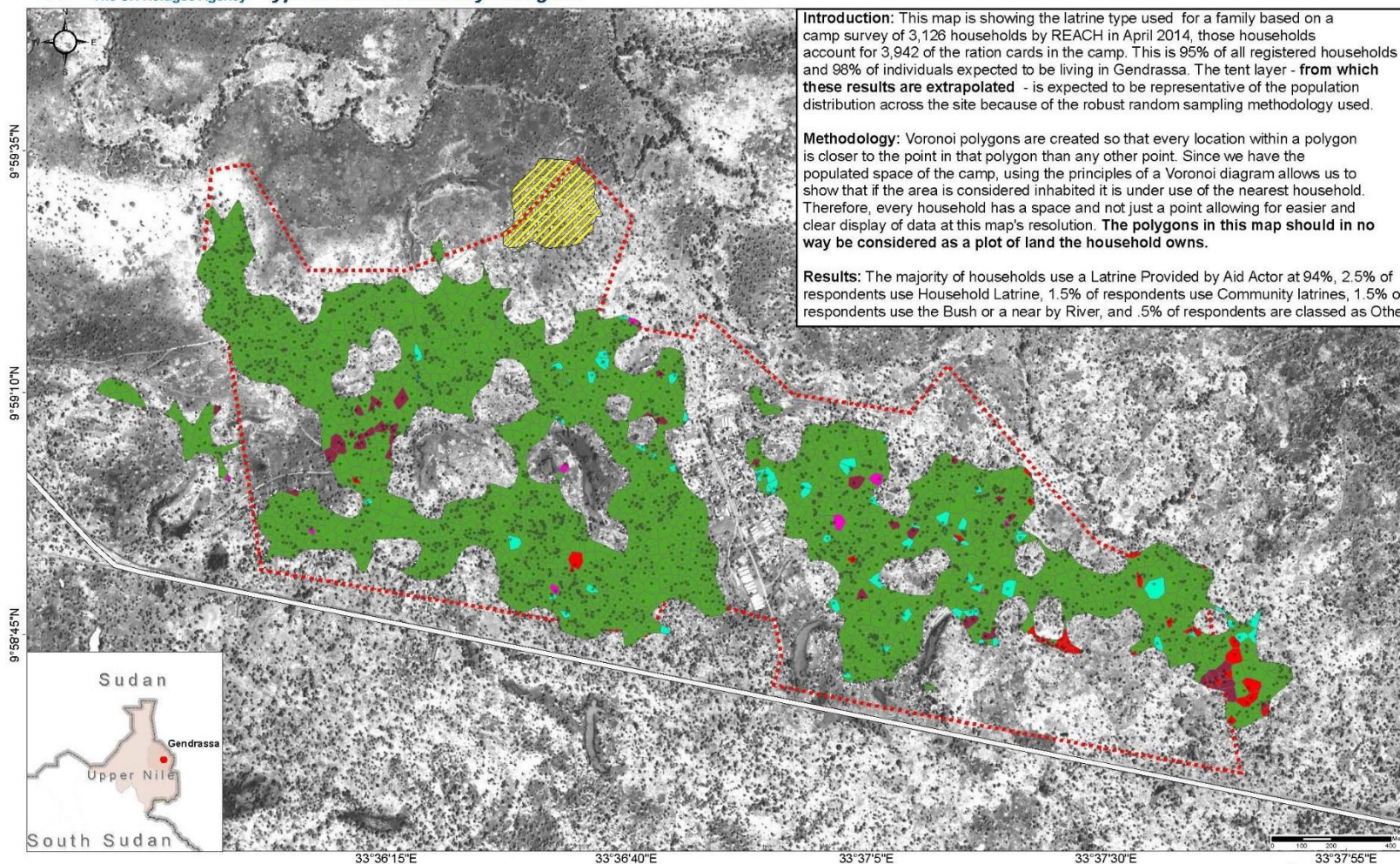


UNHCR
The UN Refugee Agency

Gendrassa Camp, Maban County, South Sudan
Type of Latrine Used by Refugees

For Humanitarian Purposes Only
Production date: 24 July 2014

Annex 10: Type of Latrine Used by Refugees



Introduction: This map is showing the latrine type used for a family based on a camp survey of 3,126 households by REACH in April 2014, those households account for 3,942 of the ration cards in the camp. This is 95% of all registered households and 98% of individuals expected to be living in Gendrassa. The tent layer - from which these results are extrapolated - is expected to be representative of the population distribution across the site because of the robust random sampling methodology used.

Methodology: Voronoi polygons are created so that every location within a polygon is closer to the point in that polygon than any other point. Since we have the populated space of the camp, using the principles of a Voronoi diagram allows us to show that if the area is considered inhabited it is under use of the nearest household. Therefore, every household has a space and not just a point allowing for easier and clear display of data at this map's resolution. The polygons in this map should in no way be considered as a plot of land the household owns.

Results: The majority of households use a Latrine Provided by Aid Actor at 94%, 2.5% of respondents use Household Latrine, 1.5% of respondents use Community latrines, 1.5% of respondents use the Bush or a near by River, and .5% of respondents are classed as Other.

- Camp Boundary
 - Relocated Jumjum Population
 - Main Road
 - Surveyed Tents
- LatrineType**
- Bush or River
 - Other
 - Community Latrine
 - Household Latrine
 - Latrine Provided by Aid Actor

Data Sources: Vector Data - REACH (Surveyed Tents, Household Data, Camp Assets)
Satellite Image: Digitalglobe Worldview-2 (December 2013)
Coordinate System: GCS WGS 1984
Contact: reach.mapping@impact-initiatives.org
File: SSD_WAT_CollectX_Gendrassa_2June2014

Note: Data, designations and boundaries contained on this map are not warranted to be error-free and do not imply acceptance by REACH or the partners mentioned on this map.
The view expressed in this document are solely the responsibility of REACH. The document should not be taken, in any way, to reflect the official position of the donors

