

# SYRIA REFUGEE RESPONSE




## LEBANON Beirut and Mt. Lebanon Governorate

### WASH Sector Working Group

#### Implementation of Water and Sanitation Activities


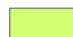


#### January to November 2013

### Legend

-  Governorate
-  District
-  Cadastral

### Cadastral with most Vulnerable Population

#### 225 Most Vulnerable Localities

-  With Water and Sanitation Activities
-  With Water Activities only
-  With Sanitation Activities only
-  With No Water and Sanitation Activities

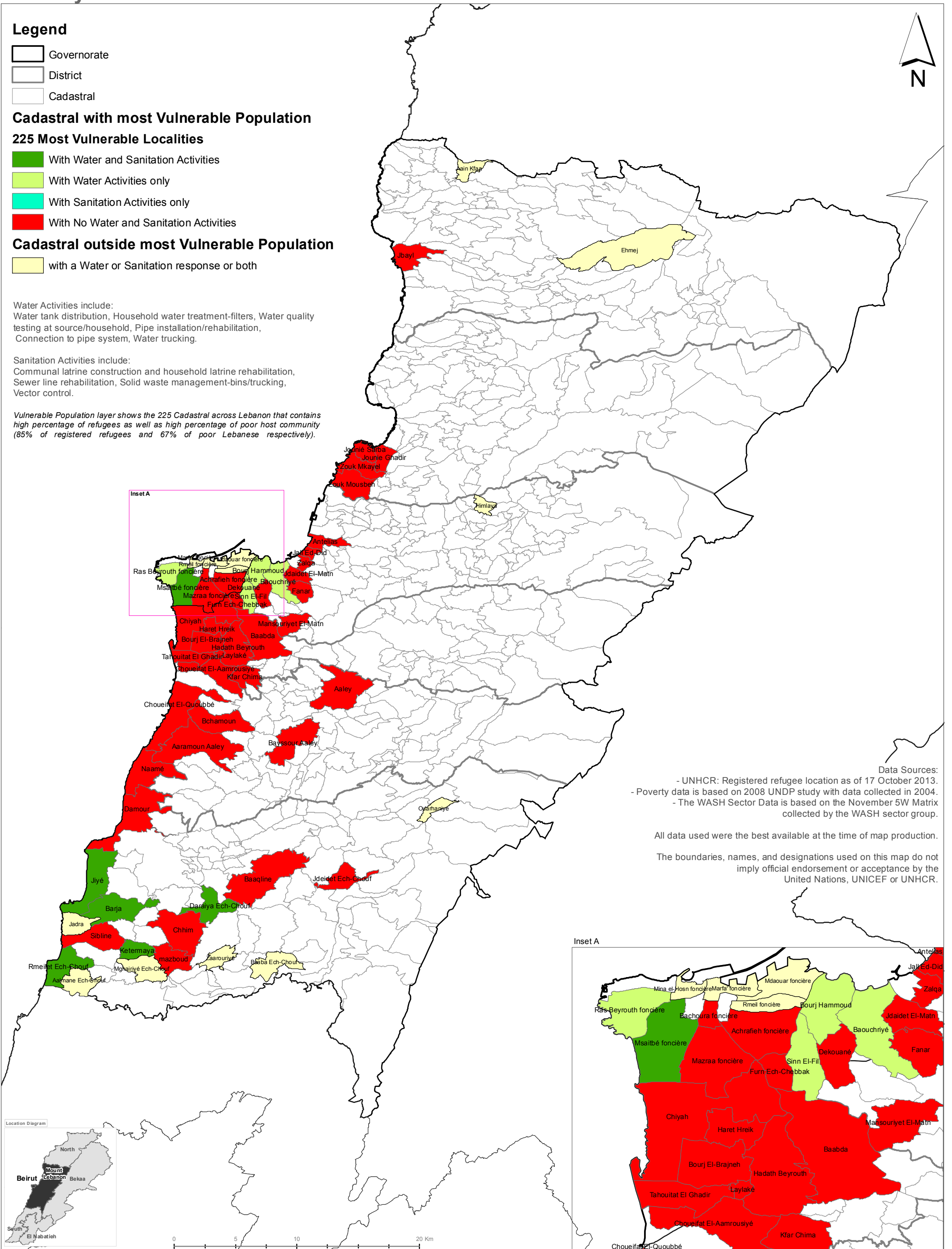
### Cadastral outside most Vulnerable Population

-  with a Water or Sanitation response or both

Water Activities include:  
 Water tank distribution, Household water treatment-filters, Water quality testing at source/household, Pipe installation/rehabilitation, Connection to pipe system, Water trucking.

Sanitation Activities include:  
 Communal latrine construction and household latrine rehabilitation, Sewer line rehabilitation, Solid waste management-bins/trucking, Vector control.

Vulnerable Population layer shows the 225 Cadastral across Lebanon that contains high percentage of refugees as well as high percentage of poor host community (85% of registered refugees and 67% of poor Lebanese respectively).



Data Sources:  
 - UNHCR: Registered refugee location as of 17 October 2013.  
 - Poverty data is based on 2008 UNDP study with data collected in 2004.  
 - The WASH Sector Data is based on the November 5W Matrix collected by the WASH sector group.

All data used were the best available at the time of map production.

The boundaries, names, and designations used on this map do not imply official endorsement or acceptance by the United Nations, UNICEF or UNHCR.

