

# SYRIA REFUGEE RESPONSE

## WASH Sector Working Group

### Implementation of Water and Sanitation Activities by Partners

From January to May 2013

#### Bekaa Lebanon

□ Governorate

□ District

□ Cadastral

Cada with Over 200 Refugees Registered

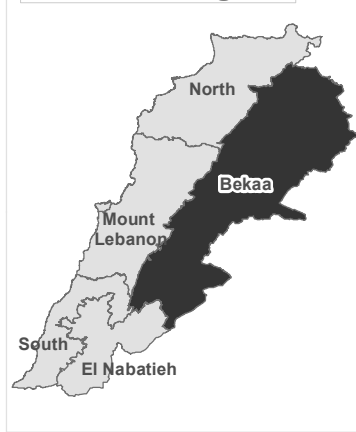
■ With No Water and Sanitation Activity

■ With Water and Sanitation Activities

■ With Only Sanitation Activities

■ With Only Water Activities

#### Location Diagram



The boundaries, names, and designations used on this map do not imply official endorsement of the United Nations or UNHCR. All data used were the best available at the time of map production.

Data Sources:

- UNHCR: Registered refugee location as of 10 June 2013.

- The WASH Sector Data is based on the 5W Matrix collected by the WASH sector group

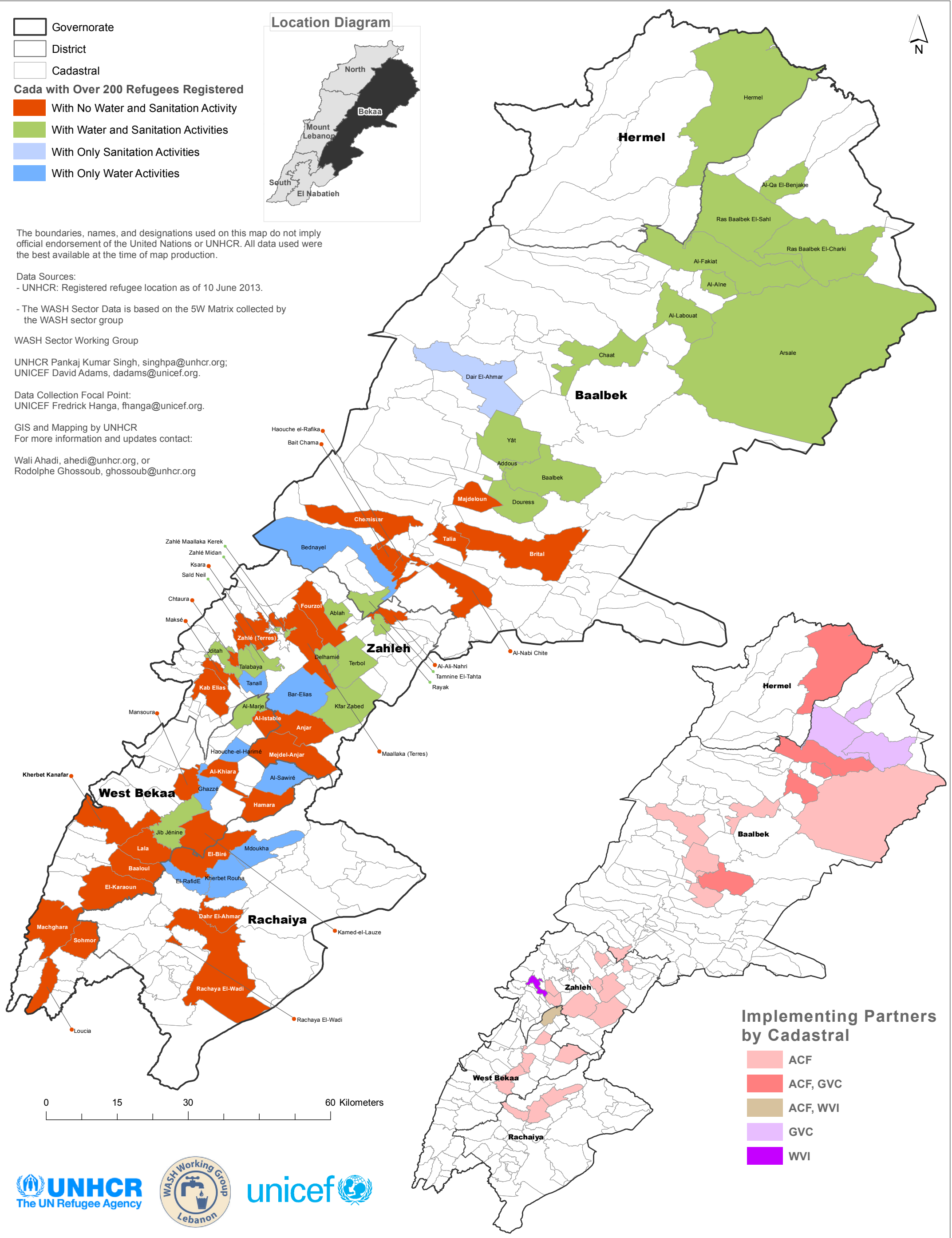
WASH Sector Working Group

UNHCR Pankaj Kumar Singh, [singhpa@unhcr.org](mailto:singhpa@unhcr.org);  
UNICEF David Adams, [dadams@unicef.org](mailto:dadams@unicef.org).

Data Collection Focal Point:  
UNICEF Fredrick Hanga, [fhanga@unicef.org](mailto:fhanga@unicef.org).

GIS and Mapping by UNHCR  
For more information and updates contact:

Wali Ahadi, [ahedi@unhcr.org](mailto:ahedi@unhcr.org), or  
Rodolphe Ghossoub, [ghossoub@unhcr.org](mailto:ghossoub@unhcr.org)



#### Implementing Partners by Cadastral

- ACF
- ACF, GVC
- ACF, WVI
- GVC
- WVI