

IDP SETTLEMENT, M'POKO AIRPORT, BANGUI, CENTRAL AFRICAN REPUBLIC

Analysis with Pleiades Data Acquired 6 June 2014, 22 February 2014 and 22 January 2014

This map illustrates satellite-detected IDP shelters and administrative buildings in M'Poko Airport in Bangui, Central African Republic using satellite images acquired on the 20 January, 22 February and 6 June 2014. As of 22 February 2014 approximately 7,789 structures were detected. Imagery from 6 June shows an important decrease in the number of tent shelters present inside of the airport since an

extensive area has been significantly cleared of shelters. As of 6 June UNOSAT detected a total of approximately 3193 tent shelters and 61 administrative support and other structures. Compared to previous UNOSAT analysis the number of shelters has decreased by 58.7%. This is a preliminary analysis and has not yet been validated in the field. Please send ground feedback to UNITAR / UNOSAT.

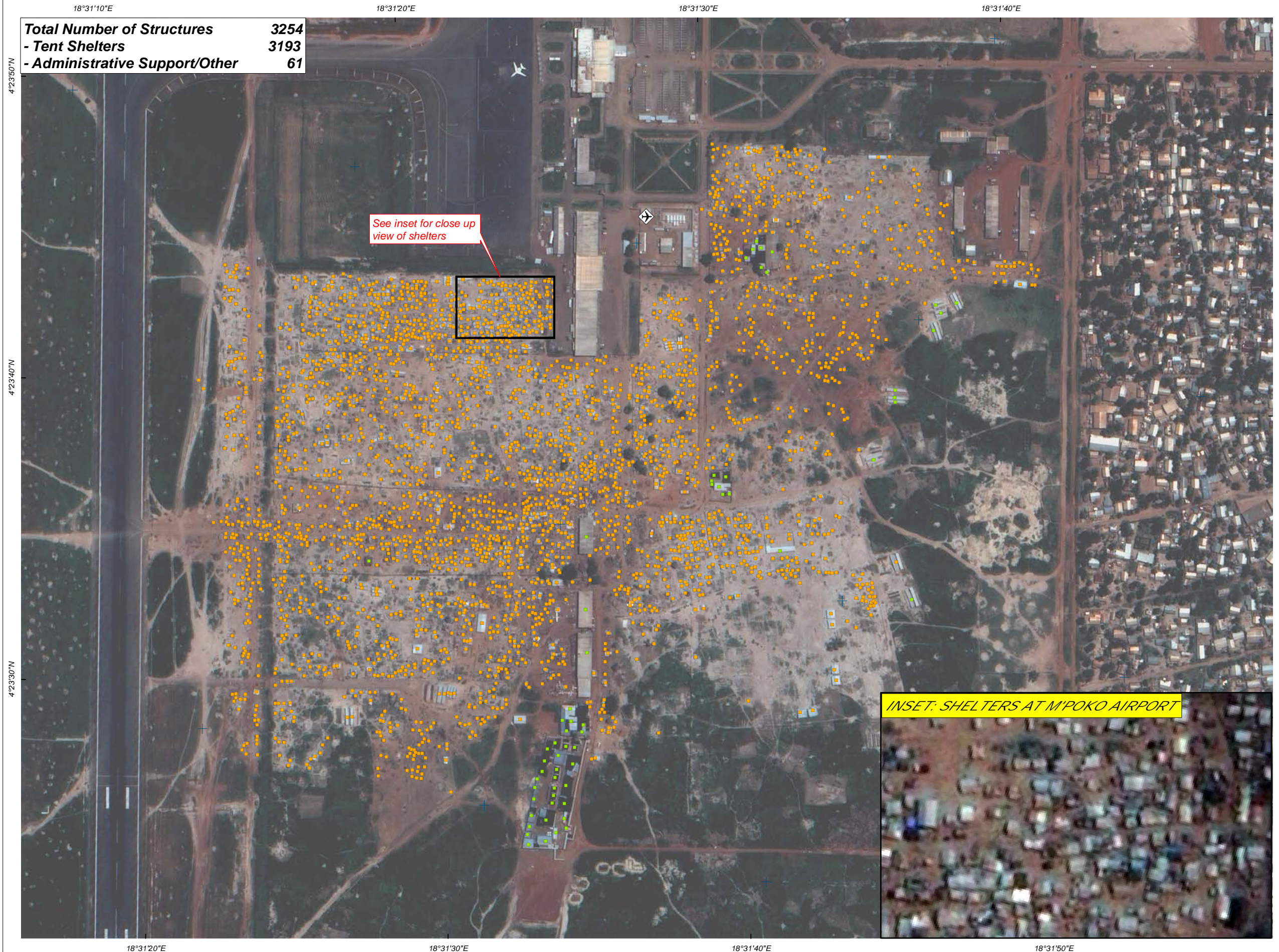
Complex
Emergency



Production Date:
26/06/2014

Version 1.0

Activation Number:
CE20131212CAF



Total Number of Structures	3254
- Tent Shelters	3193
- Administrative Support/Other	61

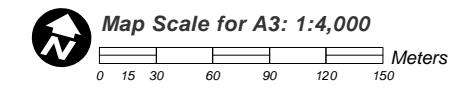
See inset for close up view of shelters

INSET: SHELTERS AT M'POKO AIRPORT



LEGEND

- Administrative Support / Other Building
- Tent Shelter
- Airport



Satellite Data (1): Pleiades
Imagery Dates: 6 June 2014
Resolution: 50 cm
Copyright: CNES 2013 - Distribution Astrium Services / Spot Image
Source: Astrium Services
Satellite Data (2): Pleiades
Imagery Dates: 22 February 2014
Resolution: 50 cm
Copyright: CNES 2013 - Distribution Astrium Services / Spot Image
Source: Astrium Services
Satellite Data (3): Pleiades
Imagery Dates: 20 January 2014
Resolution: 50 cm
Copyright: CNES 2013 - Distribution Astrium Services / Spot Image
Source: Astrium Services
Road Data : Google Map Maker / OSM / ESRI
Other Data: USGS, UNCS, NASA, NGA
Analysis : UNITAR / UNOSAT
Production: UNITAR / UNOSAT
Analysis conducted with ArcGIS v10.1

Coordinate System: WGS 1984 UTM Zone 34N
Projection: Transverse Mercator
Datum: WGS 1984
Units: Meter

The depiction and use of boundaries, geographic names and related data shown here are not warranted to be error-free nor do they imply official endorsement or acceptance by the United Nations. UNOSAT is a program of the United Nations Institute for Training and Research (UNITAR), providing satellite imagery and related geographic information, research and analysis to UN humanitarian and development agencies and their implementing partners.

This work by UNITAR/UNOSAT is licensed under a Creative Commons Attribution-NonCommercial-ShareAlike 3.0 Unported License.



UNOSAT

Contact Information: unosat@unitar.org
24/7 Hotline: +41 76 487 4998
www.unitar.org/unosat