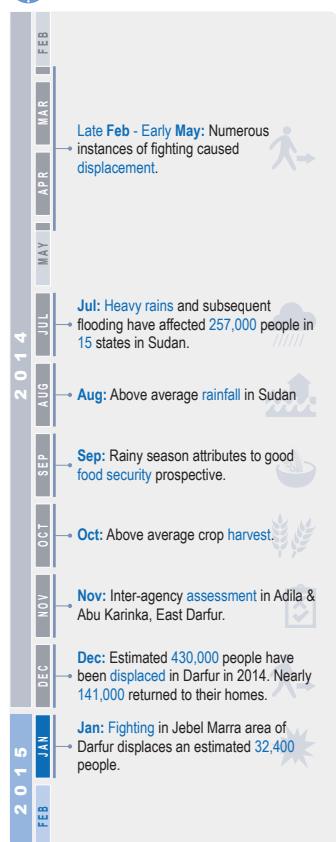




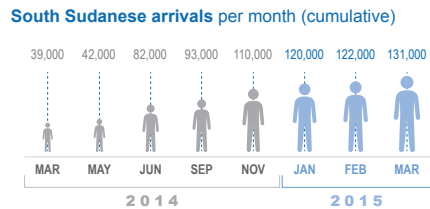
In 2015 humanitarian organizations will target assistance to an estimated **5.4 million** of the most vulnerable people in Sudan. This vulnerability is primarily driven by conflict-induced displacement, and chronic food insecurity and malnutrition. Some **3.1 million** people in Sudan are internally displaced; most in Darfur, while a further **0.7 million** people are refugees displaced from their country of origin or South Sudanese who are unable to move to South Sudan. In addition the humanitarian community aims to provide assistance to some **1.6 million** of the most food-insecure non-displaced people, as well as **1.2 million** of the most severely malnourished children aged under five.

In Darfur up to **121,000** people have been displaced from their homes by conflict since January 2015. Of these, the needs of **37,000** people have been assessed and have received some form of humanitarian assistance. Access restrictions and continued insecurity has prevented OCHA and its partners from verifying a further **84,000** people who are reported to have been displaced by fighting, including in the Eastern Jebel Marra area of Darfur.

Timeline



304,879 total refugees & asylum seekers in Sudan
Source: UNHCR

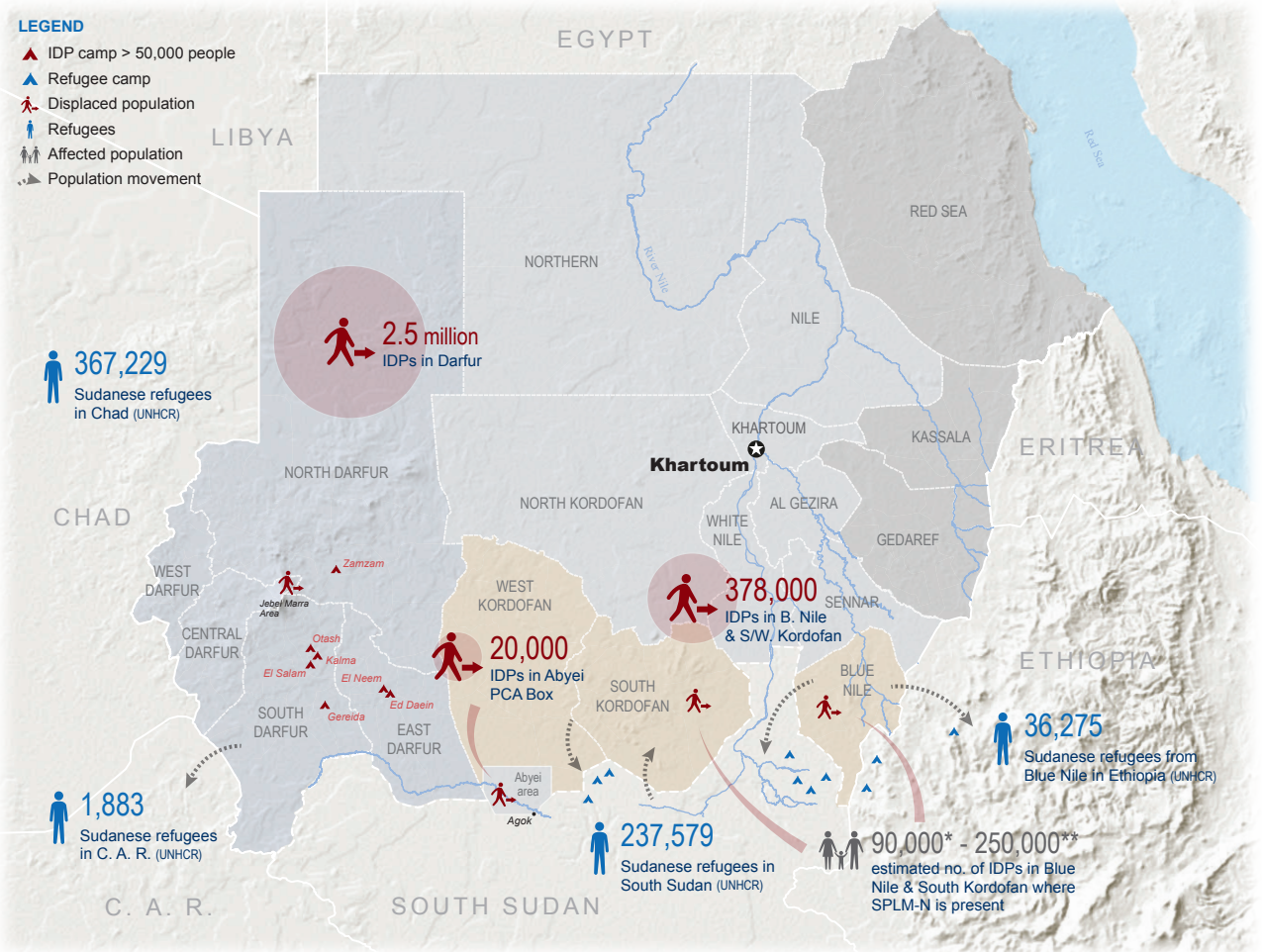


Refugees & asylum seekers in Sudan per state

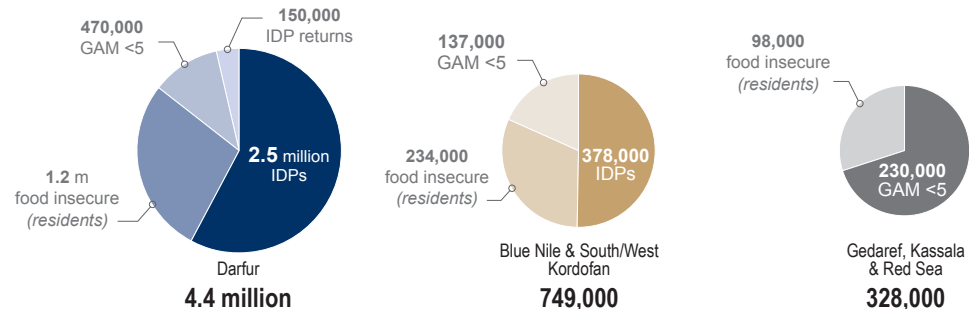


LEGEND

- ▲ IDP camp > 50,000 people
- ▲ Refugee camp
- ➔ Displaced population
- ➔ Refugees
- ➔ Affected population
- ➔ Population movement



People targeted for humanitarian assistance in main regions



* HAC; ** SRRR, SKBNCU

Date: 23 April 2015
Sources: OCHA, UNHCR, WFP, WHO, IOM, HAC, Sudan 2015 Humanitarian Needs Overview
Feedback: ocha@sudan, feedback@un.org, www.unocha.org/sudan, www.reliefweb.int
The boundaries and names shown and the designations used on this map do not imply official endorsement or acceptance by the United Nations. Final boundary between the Republic of Sudan and the Republic of South Sudan has not yet been determined. Final status of the Abyei area is not yet determined. Final Locality boundaries for the Kordofan States not verified.