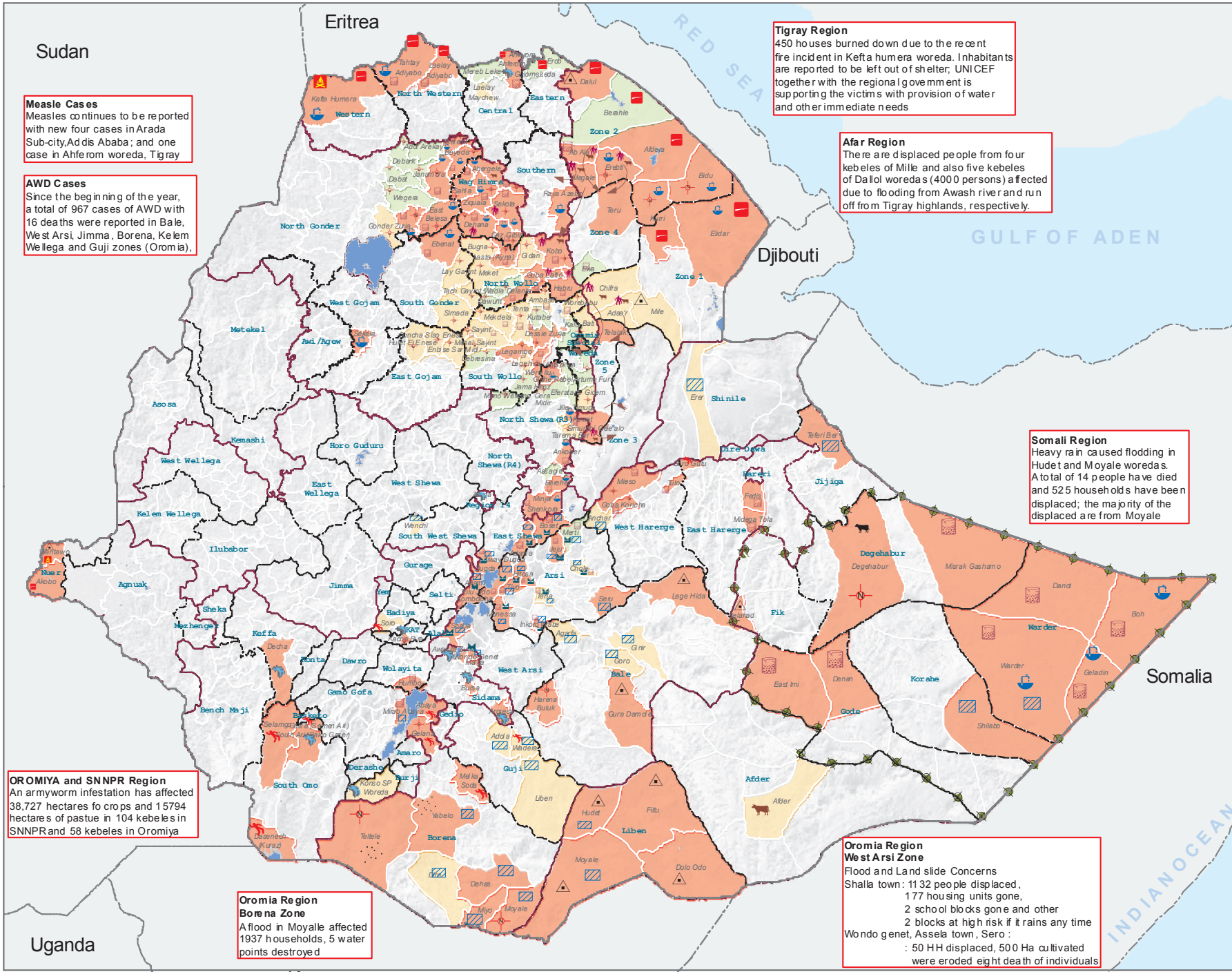


# ETHIOPIA - National Hot Spot Map

31 May 2010



**Measles Cases**  
Measles continues to be reported with new four cases in Arada Sub-city, Addis Ababa; and one case in Anherom woreda, Tigray

**AWD Cases**  
Since the beginning of the year, a total of 967 cases of AWD with 16 deaths were reported in Bale, West Arsi, Jimma, Borena, Kelem Wellega and Guji zones (Oromia).

**Tigray Region**  
450 houses burned down due to the recent fire incident in Kefta humera woreda. Inhabitants are reported to be left out of shelter; UNICEF together with the regional government is supporting the victims with provision of water and other immediate needs

**Afar Region**  
There are displaced people from four kebeles of Mile and also five kebeles of Dalol woredas (4000 persons) affected due to flooding from Awash river and run off from Tigray highlands, respectively.

**Somali Region**  
Heavy rain caused flooding in Hudef and Moyale woredas. A total of 14 people have died and 525 householders have been displaced; the majority of the displaced are from Moyale

**OROMIYA and SNNPR Region**  
An armyworm infestation has affected 38,727 hectares for crops and 15794 hectares of pasture in 104 kebeles in SNNPR and 58 kebeles in Oromiya

**Oromia Region Borena Zone**  
A flood in Moyale affected 1937 households, 5 water points destroyed

**Oromia Region West Arsi Zone**  
Flood and Land slide Concerns  
Shalla town : 1132 people displaced, 177 housing units gone, 2 school blocks gone and other 2 blocks at high risk if it rains any time  
Wondo genet, Assela town, Sero : 50 HH displaced, 500 Ha cultivated were eroded eight death of individuals

### Legend

- International Boundary
- Regional Boundary
- Zonal Boundary
- Woreda Boundary
- Lakes
- Military Operation

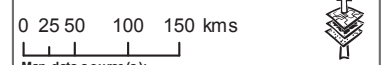
### Hot Spot Areas

- No Data/No Humanitarian Concern
- Close Monitoring
- Medium Humanitarian Concern
- Critical

### Hot Spot Indicators – This month

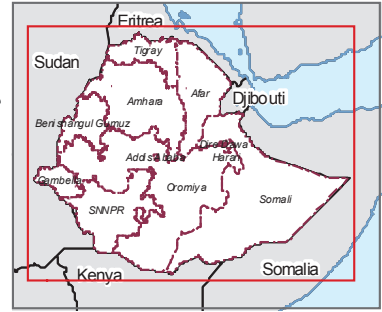
- AWD
- Malaria
- Measles
- Flood
- Amy worm
- Refugees/IDPs
- Fire Incidents
- Water Shortage/WASH related concerns
- Food Insecurity
- High Malnutrition
- Land Slide
- Border Conflict
- Livestock Migration
- Livestock Disease/Mortality due to drought
- House Hold Migration
- Approx. Pastoralist & Livestock Migration Route

Map Doc Name: 11\_HS\_004\_National\_053110\_A4  
Creation Date: 31 May, 2010  
Web Resources: <http://ochaonline.un.org/ethiopia>  
Contact address: ocha-eth@un.org



**Map data source(s):**  
Humanitarian Partners, UNOCHA

**Disclaimers:**  
The designations employed and the presentation of material on this map do not imply the expression of any opinion whatsoever on the part of the Secretariat of the United Nations concerning the legal status of any country, territory, city or area or of its authorities, or concerning the delimitation of its frontiers or boundaries.



Uganda