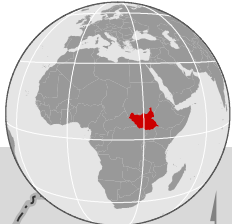


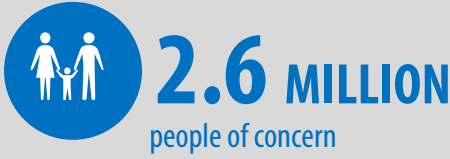


# SOUTH SUDAN SITUATION : Regional overview of population of concern

| as of 22 July 2015

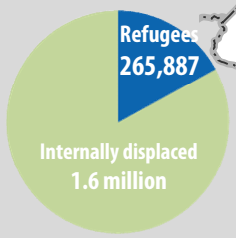
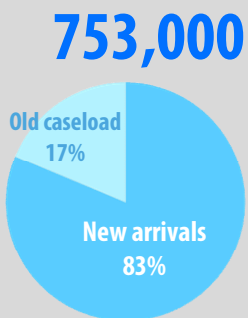


## KEY FIGURES



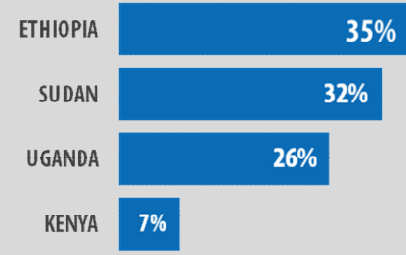
Total refugees from South Sudan in Ethiopia, Kenya, Sudan and Uganda

Population of concern in South Sudan

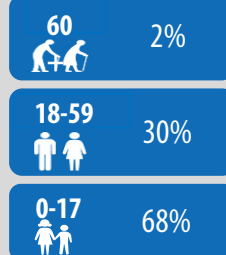


**622,122**  
Newly displaced refugees from South Sudan | since 15 Dec 2013

### Geographic distribution of new refugee arrivals

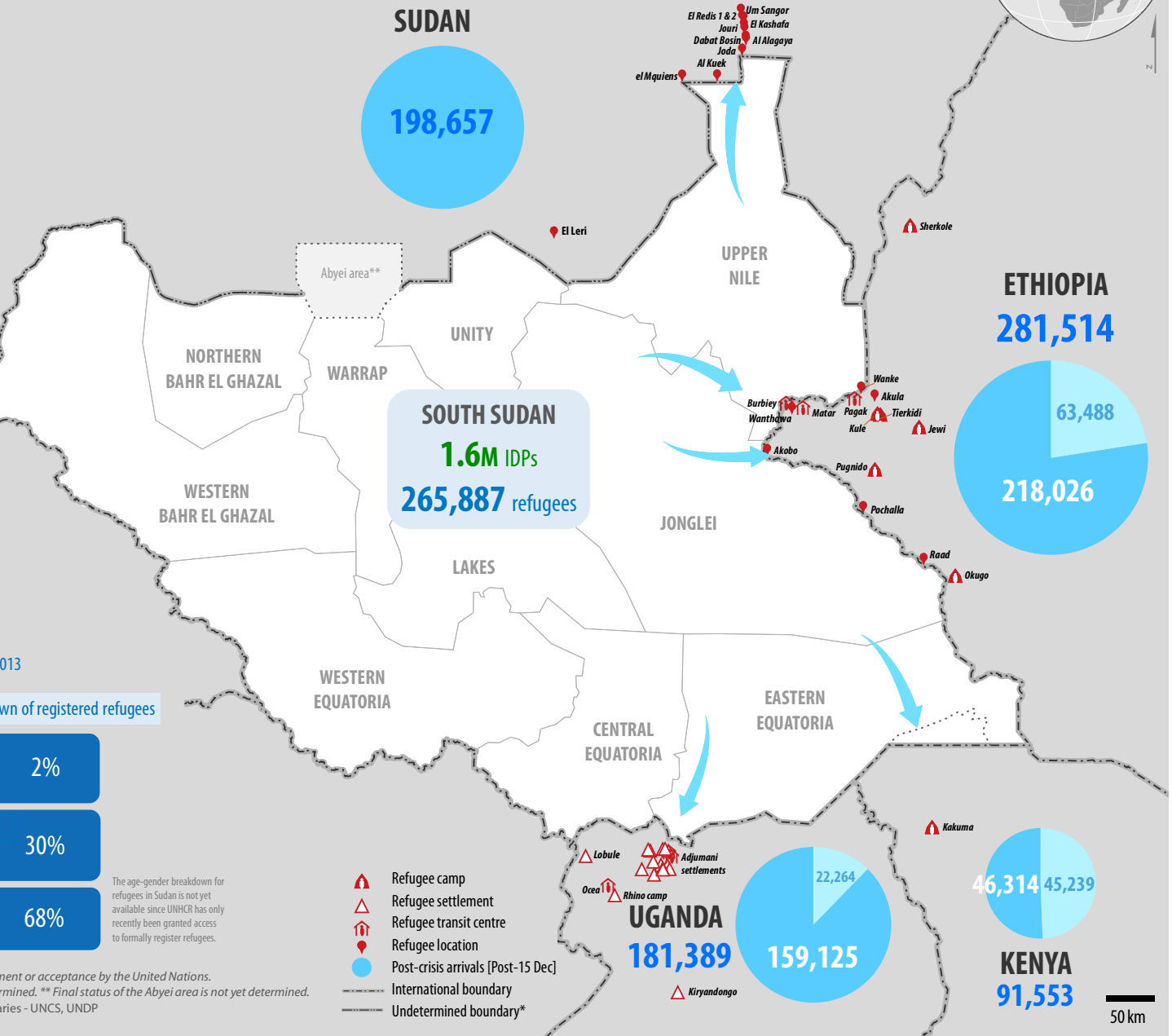


### Age breakdown of registered refugees



The age-gender breakdown for refugees in Sudan is not yet available since UNHCR has only recently been granted access to formally register refugees.

The boundaries and names shown and the designations used on this map do not imply official endorsement or acceptance by the United Nations.  
 \* Final boundary between the Republic of Sudan and the Republic of South Sudan has not yet been determined. \*\* Final status of the Abyei area is not yet determined.  
 Creation date: 27 July 2015 Sources: Refugee statistics - UNHCR, IDP statistics - UNOCHA, Boundaries - UNCS, UNDP  
 Feedback: UNHCR Regional Support Hub in Nairobi kenrsgis@unhcr.org



50 km