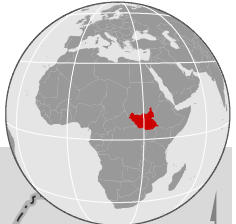




SOUTH SUDAN SITUATION : Regional overview of population of concern

| as of 05 August 2015

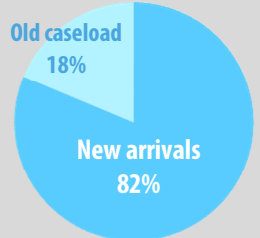


KEY FIGURES



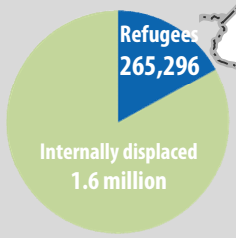
Total refugees from South Sudan in Ethiopia, Kenya, Sudan and Uganda

746,409



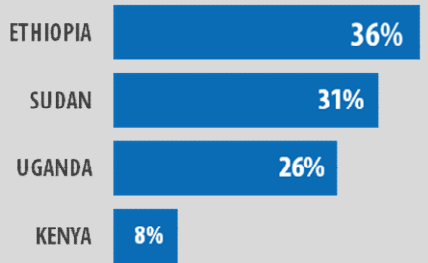
Population of concern in South Sudan

1.9 million

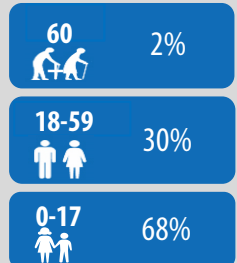


615,486
Newly displaced refugees from South Sudan | since 15 Dec 2013

Geographic distribution of new refugee arrivals



Age breakdown of registered refugees



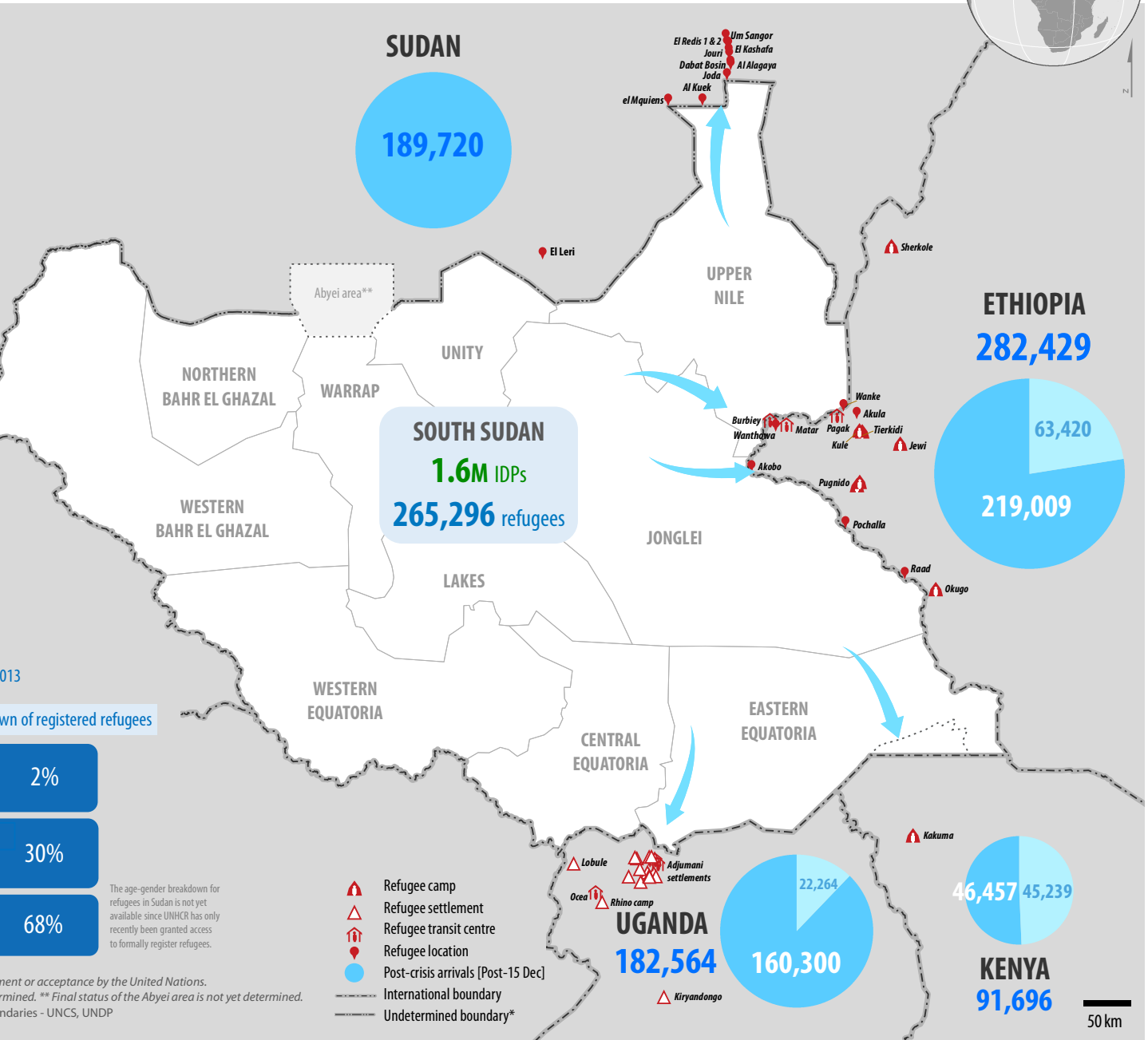
The age-gender breakdown for refugees in Sudan is not yet available since UNHCR has only recently been granted access to formally register refugees.

The boundaries and names shown and the designations used on this map do not imply official endorsement or acceptance by the United Nations. * Final boundary between the Republic of Sudan and the Republic of South Sudan has not yet been determined. ** Final status of the Abyei area is not yet determined. Creation date: 10 August 2015 Sources: Refugee statistics - UNHCR, IDP statistics - UNOCHA, Boundaries - UNCS, UNDP Feedback: UNHCR Regional Support Hub in Nairobi kenrsgis@unhcr.org

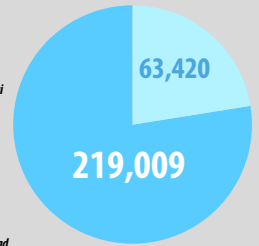
SUDAN



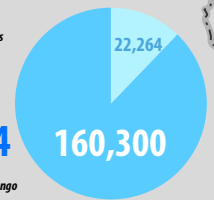
SOUTH SUDAN
1.6M IDPs
265,296 refugees



ETHIOPIA
282,429



UGANDA
182,564



KENYA
46,457 45,239
91,696

- Refugee camp
- Refugee settlement
- Refugee transit centre
- Refugee location
- Post-crisis arrivals [Post-15 Dec]
- International boundary
- Undetermined boundary*

50 km