






Status of IDP and Transit Sites in Kenya as at 27 March 2009



Legend

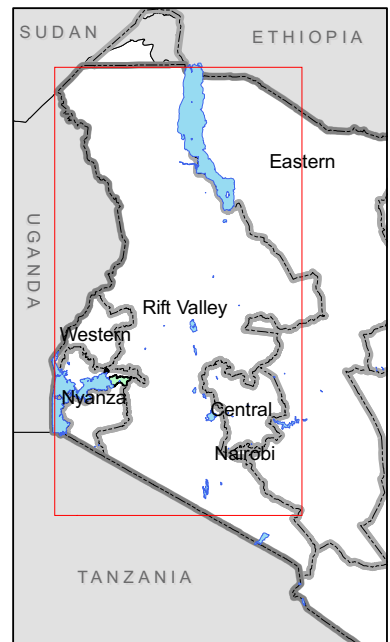
-  Lakes
-  International Boundary
-  Districts
-  Transit Sites
-  IDP Camp

Map Doc Name: KEN_IDP_and_Transit_sites_A3_21Apr09
GLIDE Number: N/A
Creation Date: 21 April 2009
Projection/Datum: Geographic / WGS 84
Web Resources: <http://ochaonline.un.org/Kenya>
Nominal Scale at A3 paper size: 1:2,000,000

0 12.5 25 50 75 100 Km

Map data source(s):
Administrative Boundaries: DEPHA, OCHA ROCEA
IDP and Transit Site Data: Ministry of State for Special Programs

Disclaimers:
The designations employed and the presentation of material on this map do not imply the expression of any opinion whatsoever on the part of the Secretariat of the United Nations concerning the legal status of any country, territory, city or area or of its authorities, or concerning the delimitation of its frontiers or boundaries.



Eldoret includes:
Eldoret East = 16 Transit Sites and 4,046 Households
Eldoret West = 1 Transit Site and 12 Households
Wareng = 17 Transit Sites and 6,183 Households
Eldoret Showground IDP Camp = 1,100 IDPs.

Note: In the absence of accurate Geographic coordinates, the locations depicted on this map are for reference purposes, and do not necessarily show the exact location of the sites.