

SYRIA REFUGEE RESPONSE

LEBANON South and El Nabatieh Governorate

Education Working Group

Implementation of Education Activities January to April 2014

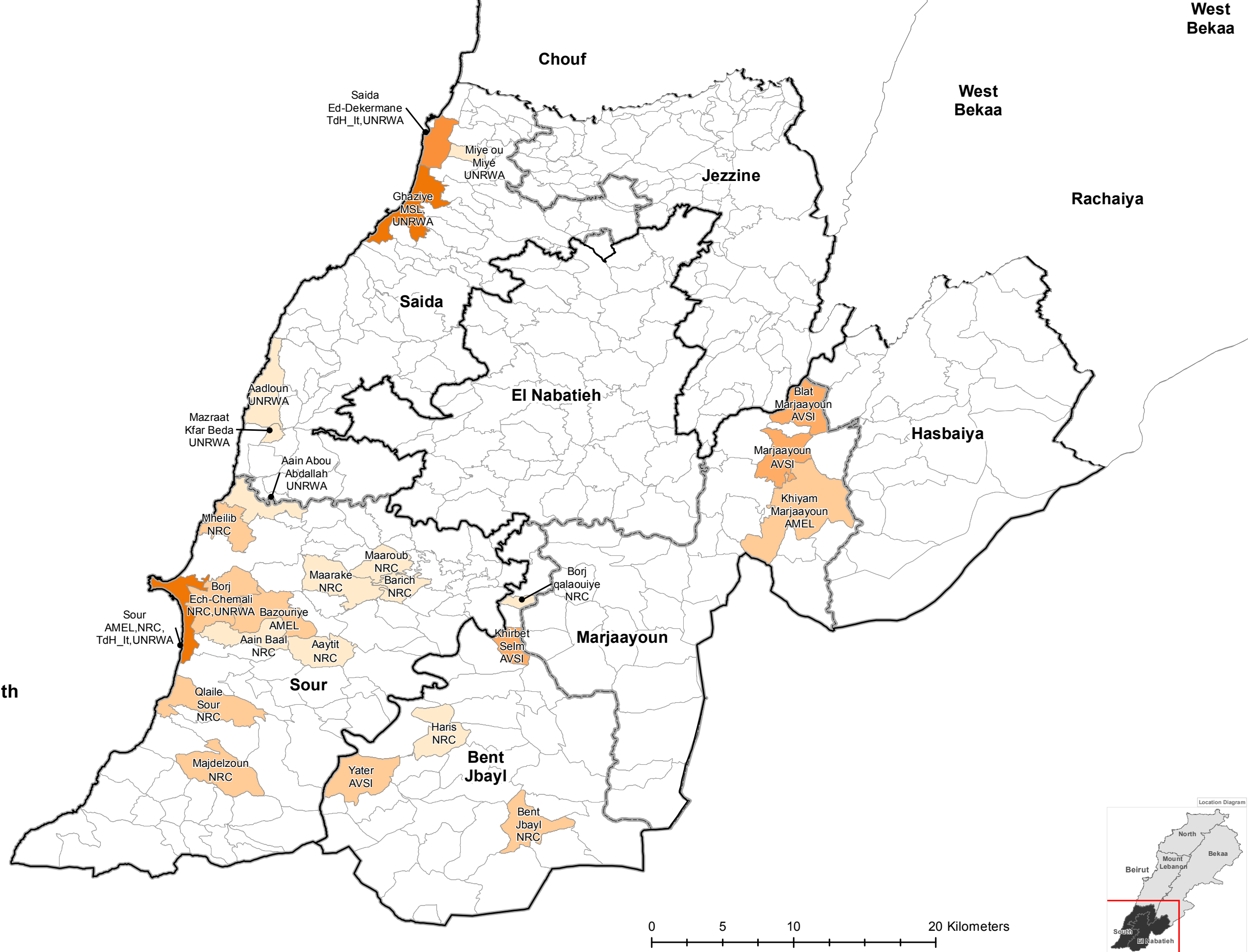
WG Members implementing Non-formal Education - Remedial



Education Sector Working Group
 UNHCR Kerstin Karlstrom, karlstro@unhcr.org
 UNICEF Nathalie Hamoudi, nhamoudi@unicef.org
 FIELD CO-ORDINATORS
 Heba Dabliz, dabliz@unhcr.org
 Khalil Dagher, kdagher@unicef.org



Data Sources:
 - The Education Sector Data is based on the Activity Info Reporting.
 All data used were the best available at the time of map production.
 The boundaries, names, and designations used on this map do not imply official endorsement or acceptance by the United Nations, UNICEF or UNHCR.
 GIS and Mapping by UNHCR and UNICEF
 For more information and updates contact
 Aoife Long, along@unicef.org



Legend

Remedial, Non-formal Education South

Number of Children

- 1 - 50
- 51 - 109
- 110 - 168
- 169 - 263
- 264 - 496

- Governorate
- Caza
- Cadastral

