

# SYRIA REFUGEE RESPONSE

## LEBANON South and El Nabatieh Governorate

### Education Working Group

#### Implementation of Education Activities October 2013 to April 2014

#### WG Members implementing Formal Education Second Shift



Education Sector Working Group  
 UNHCR Kerstin Karlstrom, karlstro@unhcr.org  
 UNICEF Nathalie Hamoudi, nhamoudi@unicef.org  
 FIELD CO-ORDINATORS  
 Heba Dabliz, dabliz@unhcr.org  
 Khalil Dagher, kdagher@unicef.org

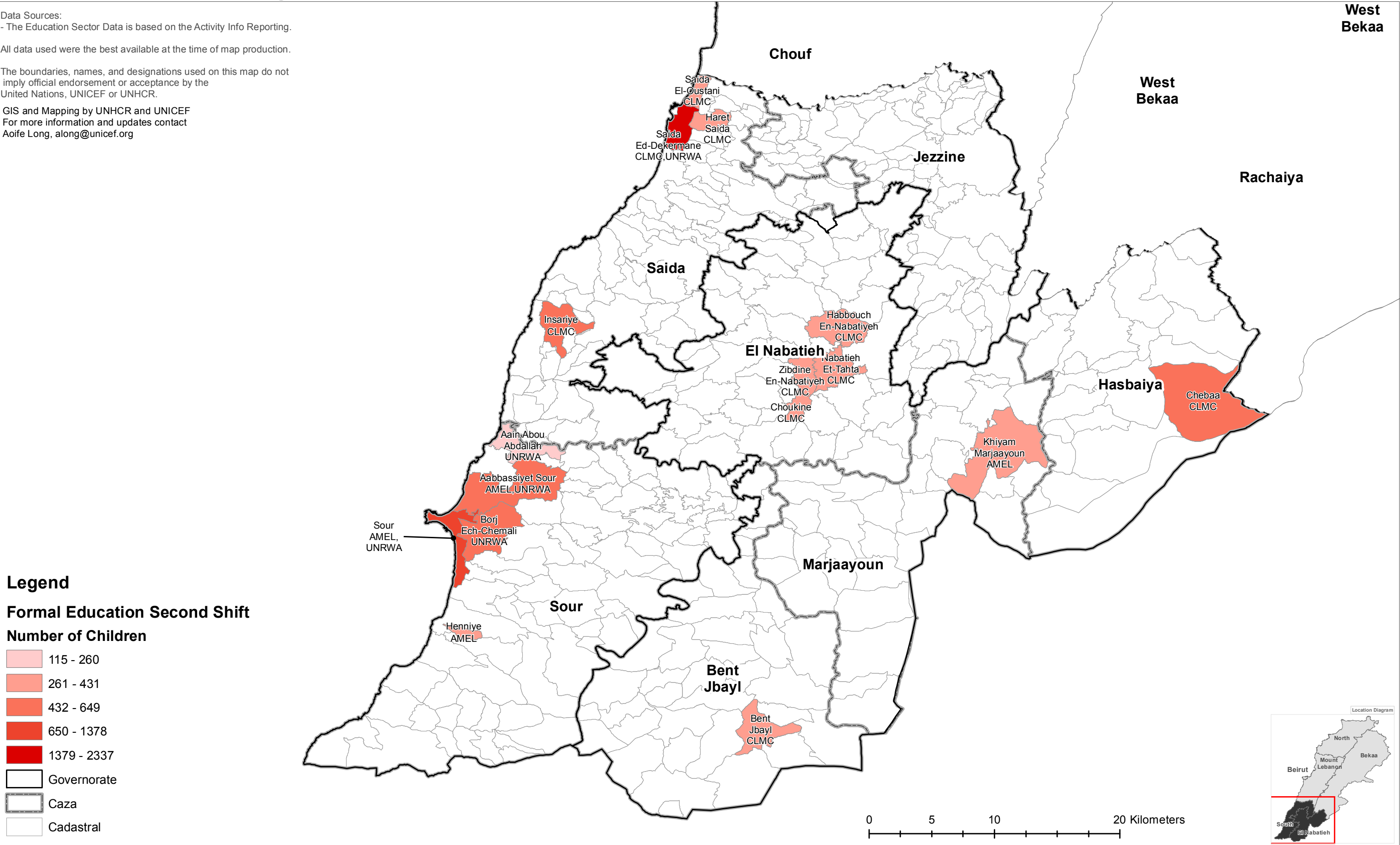


Data Sources:  
 - The Education Sector Data is based on the Activity Info Reporting.

All data used were the best available at the time of map production.

The boundaries, names, and designations used on this map do not imply official endorsement or acceptance by the United Nations, UNICEF or UNHCR.

GIS and Mapping by UNHCR and UNICEF  
 For more information and updates contact  
 Aoife Long, along@unicef.org



### Legend

#### Formal Education Second Shift Number of Children

- 115 - 260
- 261 - 431
- 432 - 649
- 650 - 1378
- 1379 - 2337
- Governorate
- Caza
- Cadastral

0 5 10 20 Kilometers

