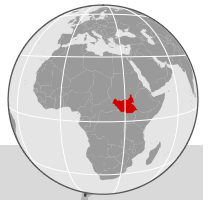


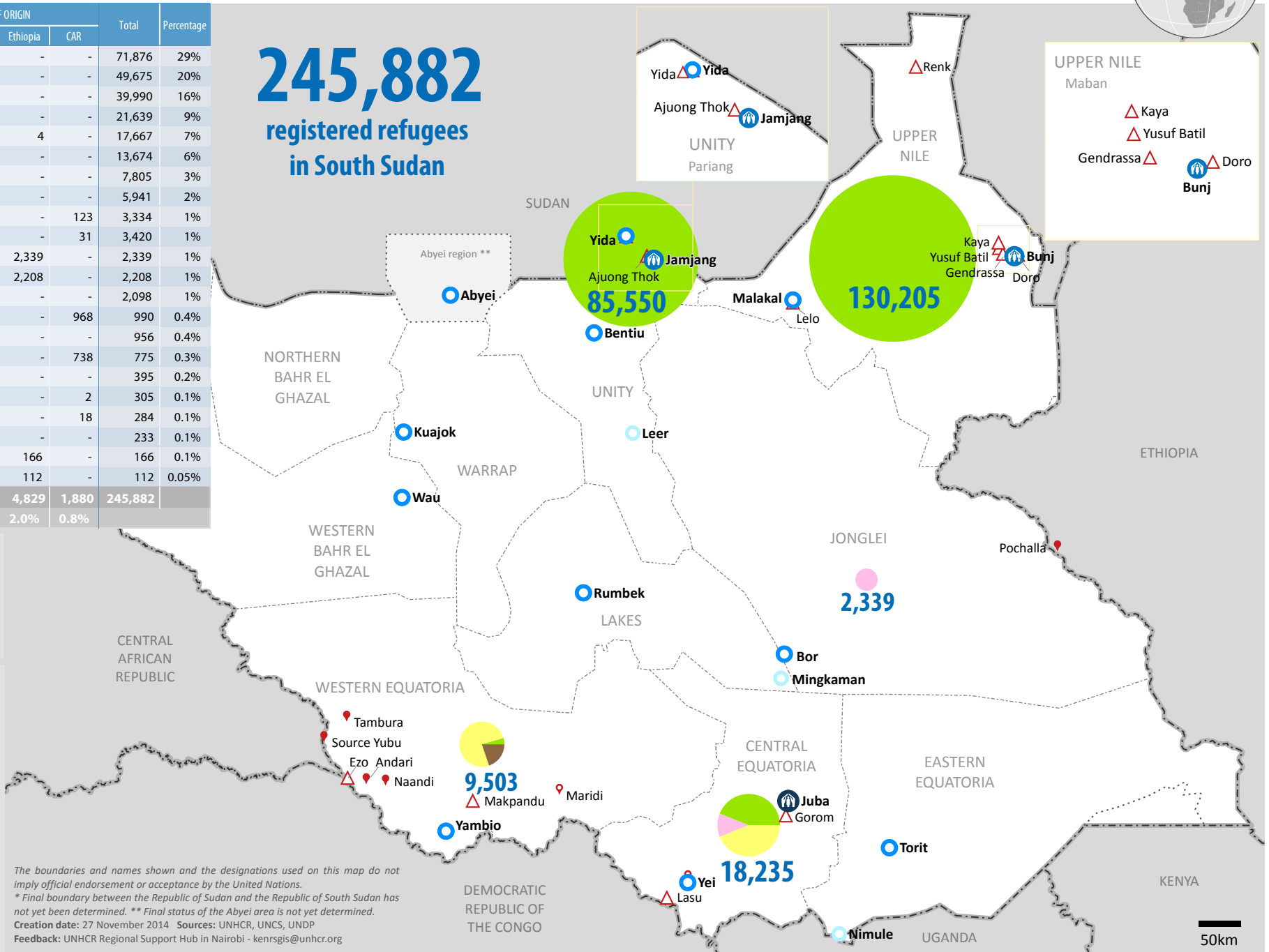
# South Sudan: Registered refugees by nationality and location (state)

As of 01 November 2014



Refugee Location	COUNTRY OF ORIGIN				Total	Percentage
	Sudan	DRC	Ethiopia	CAR		
Yida	71,876	-	-	-	71,876	29%
Doro	49,675	-	-	-	49,675	20%
Yusuf Batil	39,990	-	-	-	39,990	16%
Kaya	21,639	-	-	-	21,639	9%
Gendrassa	17,663	-	4	-	17,667	7%
Ajuong Thok	13,674	-	-	-	13,674	6%
Lasu	12	7,793	-	-	7,805	3%
Juba	5,941	-	-	-	5,941	2%
Makpandu	38	3,173	-	123	3,334	1%
Ezo	-	3,389	-	31	3,420	1%
Pochalla	-	-	2,339	-	2,339	1%
Gorom	-	-	2,208	-	2,208	1%
Yei	2,098	-	-	-	2,098	1%
Source Yubu	-	22	-	968	990	0.4%
Lelo	956	-	-	-	956	0.4%
Tambura	-	37	-	738	775	0.3%
Maridi	395	-	-	-	395	0.2%
Andari	-	303	-	2	305	0.1%
Naandi	-	266	-	18	284	0.1%
Morobo	-	233	-	-	233	0.1%
Renk	-	-	166	-	166	0.1%
Malakal	-	-	112	-	112	0.05%
<b>Total</b>	<b>223,957</b>	<b>15,216</b>	<b>4,829</b>	<b>1,880</b>	<b>245,882</b>	
<b>Percentage</b>	<b>91.1%</b>	<b>6.2%</b>	<b>2.0%</b>	<b>0.8%</b>		

**245,882**  
registered refugees  
in South Sudan



**Breakdown by country of origin**

- Sudan [91%]
- DR Congo [6%]
- Ethiopia [2%]
- CAR [1%]

- UNHCR Country Office
- UNHCR Sub Office
- UNHCR Field Office
- UNHCR Field Unit
- Refugee settlement
- Refugee location
- Urban refugee location
- International boundary
- Undetermined boundary\*
- State boundary

The boundaries and names shown and the designations used on this map do not imply official endorsement or acceptance by the United Nations.  
 \* Final boundary between the Republic of Sudan and the Republic of South Sudan has not yet been determined. \*\* Final status of the Abyei area is not yet determined.  
 Creation date: 27 November 2014 Sources: UNHCR, UNCS, UNDP  
 Feedback: UNHCR Regional Support Hub in Nairobi - kenrgis@unhcr.org