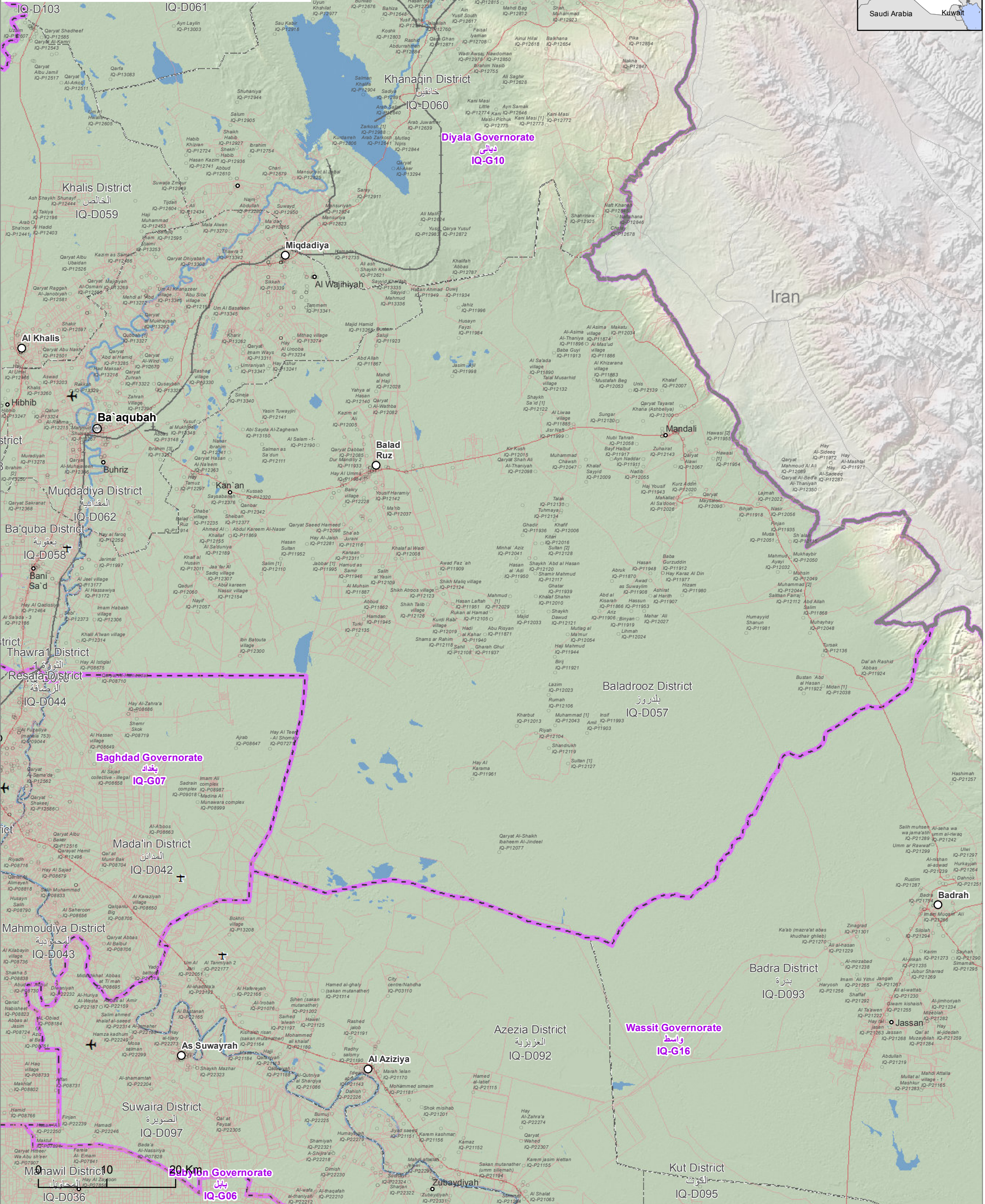
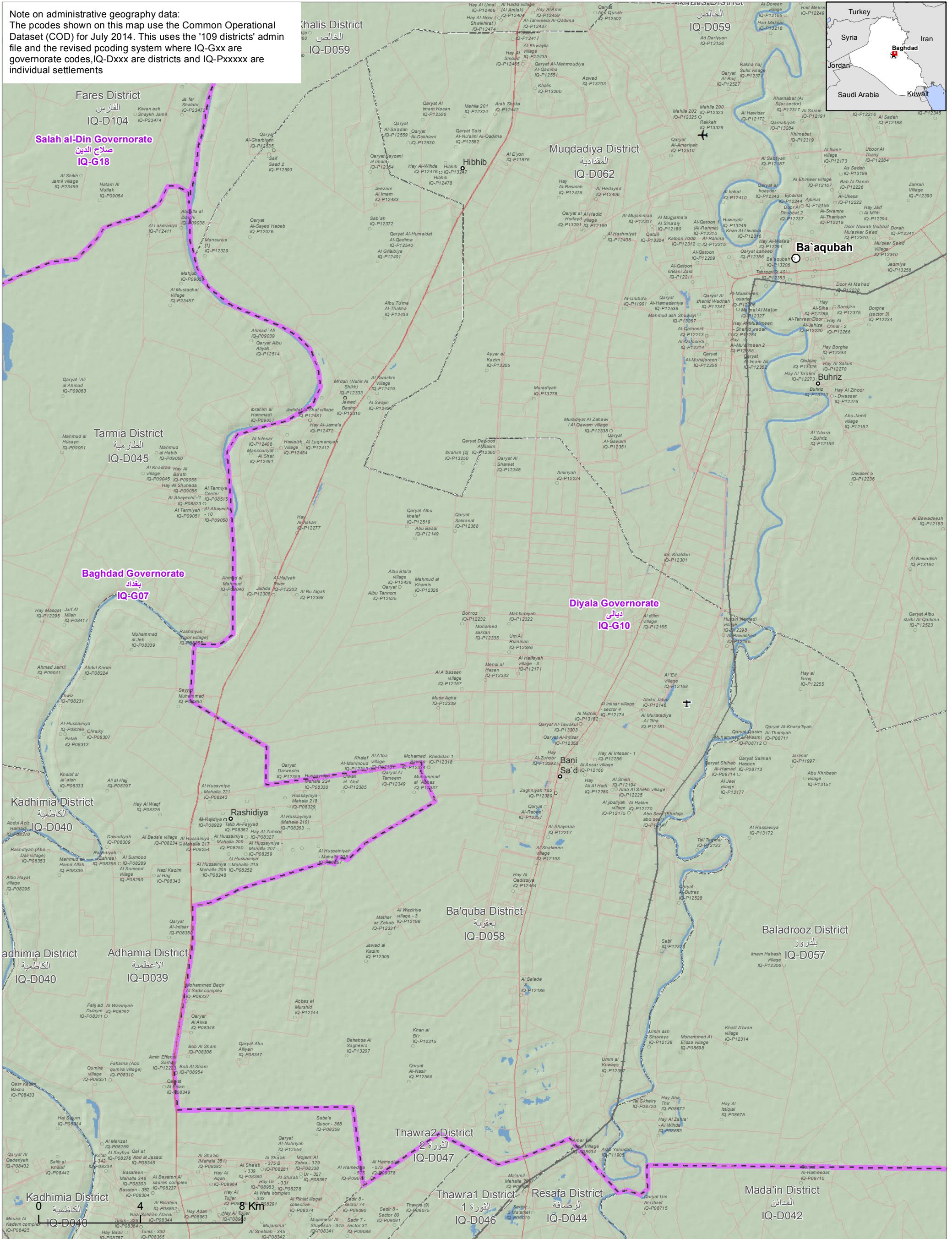


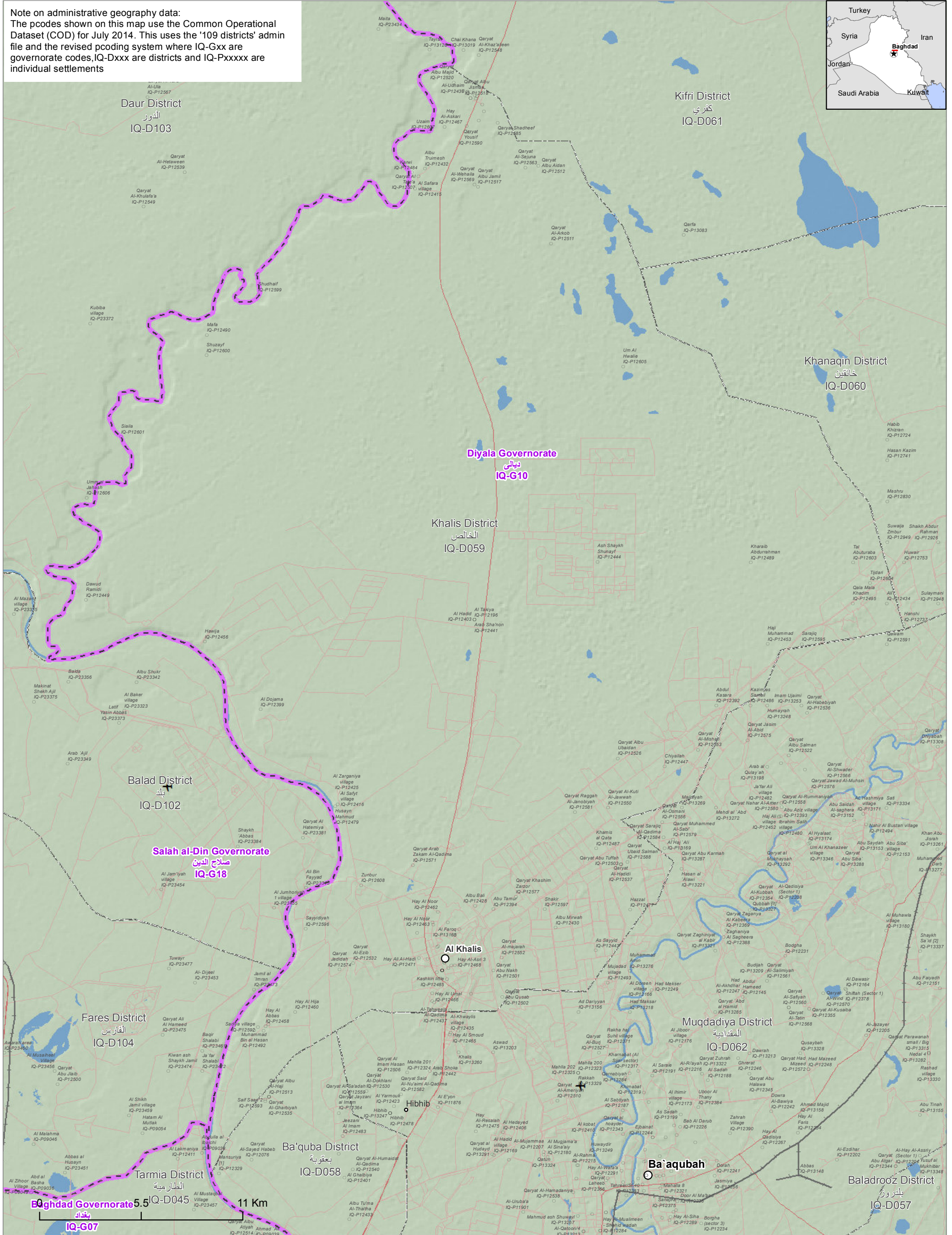
Note on administrative geography data:
 The pcodes shown on this map use the Common Operational Dataset (COD) for July 2014. This uses the '109 districts' admin file and the revised coding system where IQ-Gxx are governorate codes, IQ-Dxxx are districts and IQ-Pxxxx are individual settlements



Note on administrative geography data:
 The pcodes shown on this map use the Common Operational Dataset (COD) for July 2014. This uses the '109 districts' admin file and the revised coding system where IQ-Gxx are governorate codes, IQ-Dxxx are districts and IQ-Pxxxx are individual settlements



Note on administrative geography data:
 The pcodes shown on this map use the Common Operational Dataset (COD) for July 2014. This uses the '109 districts' admin file and the revised pcoding system where IQ-Gxx are governorate codes, IQ-Dxxx are districts and IQ-Pxxxxx are individual settlements



Creation date: 20 July 2014
 Glide number: OT-2014-000074-IRQ

Contacts: ocha.iraq@gmail.com
 ira@mapaction.org

www.humanitarianresponse.info/operations/iraq
 www.mapaction.org

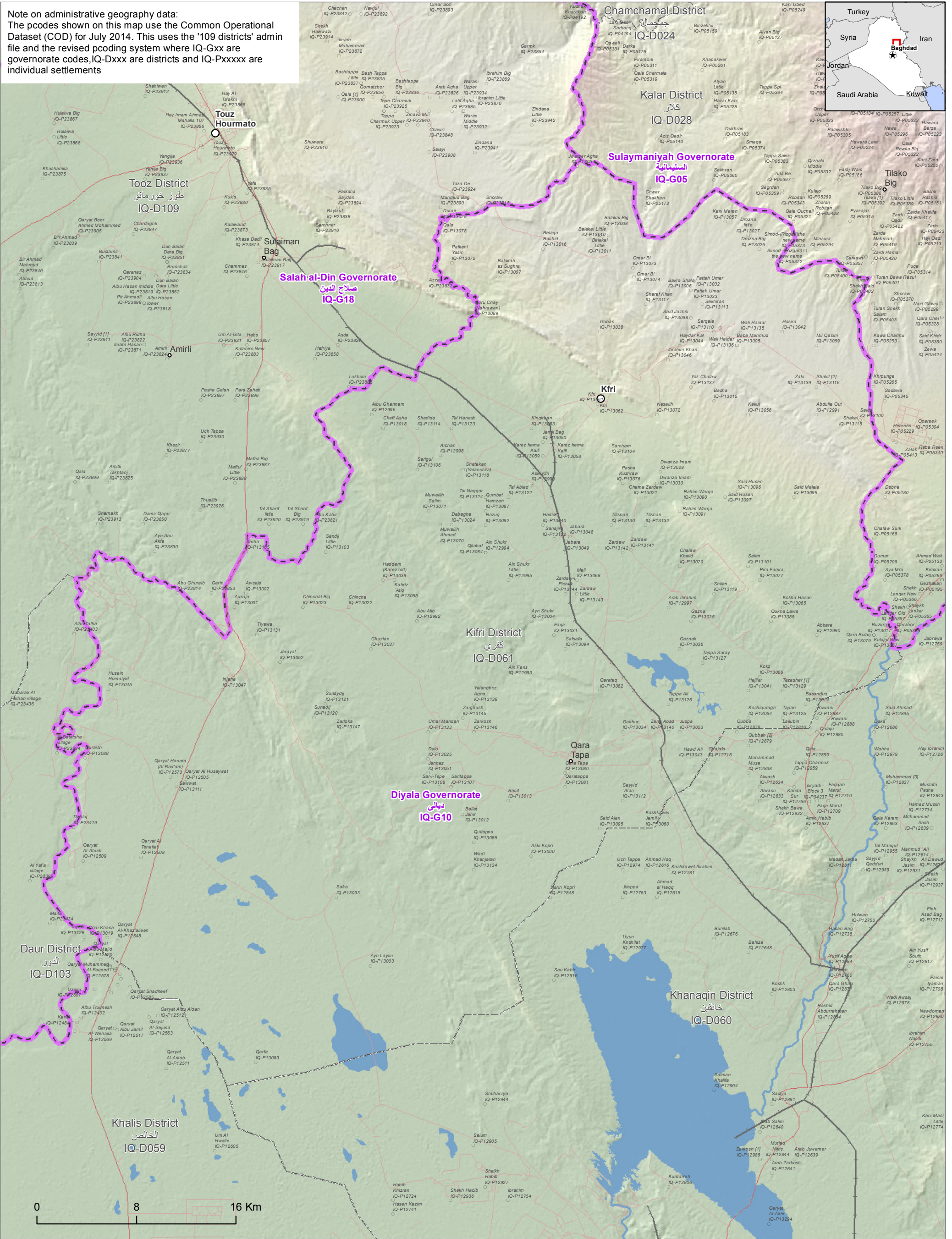
Sources: Governorate boundaries: COD
 District boundaries: COD ('109 districts')
 Settlements: COD (orig. IOM)
 Roads: Logs Cluster / NIMA

Topography: Hill shaded SRTM
 Rivers and lakes: NIMA

Note on administrative geography data:
The pcodes shown on this map use the Common Operational Dataset (COD) for July 2014. This uses the '109 districts' admin file and the revised coding system where IQ-Gxx are governorate codes, IQ-Dxxx are districts and IQ-Pxxxx are individual settlements



Note on administrative geography data:
 The pcodes shown on this map use the Common Operational Dataset (COD) for July 2014. This uses the '109 districts' admin file and the revised pcoding system where IQ-Gxx are governorate codes, IQ-Dxxx are districts and IQ-Pxxxxx are individual settlements



Note on administrative geography data:
 The pcodes shown on this map use the Common Operational Dataset (COD) for July 2014. This uses the '109 districts' admin file and the revised pcoding system where IQ-Gxx are governorate codes, IQ-Dxxx are districts and IQ-Pxxxx are individual settlements

