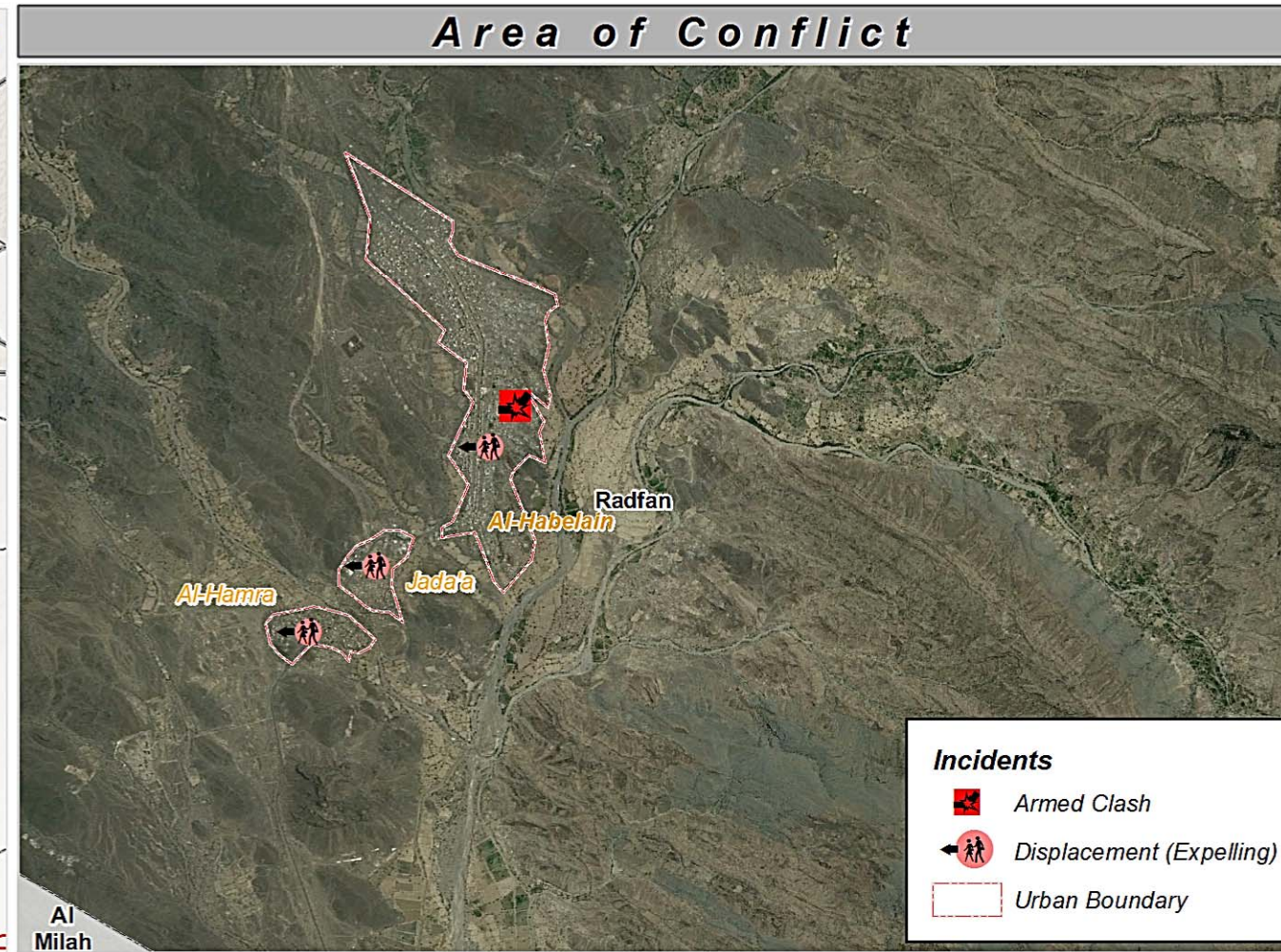
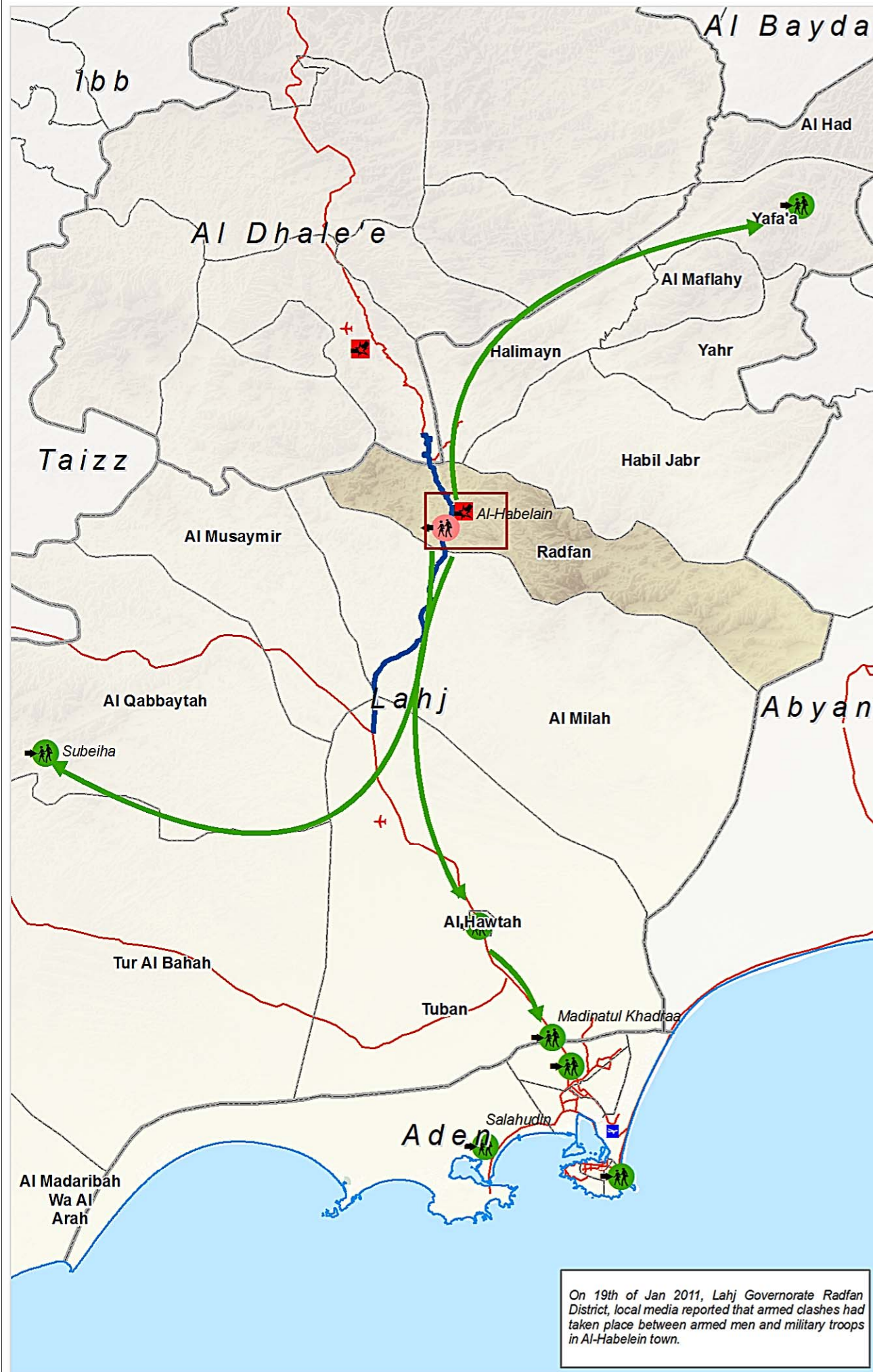
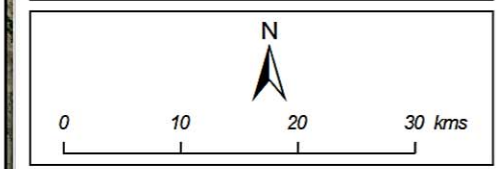
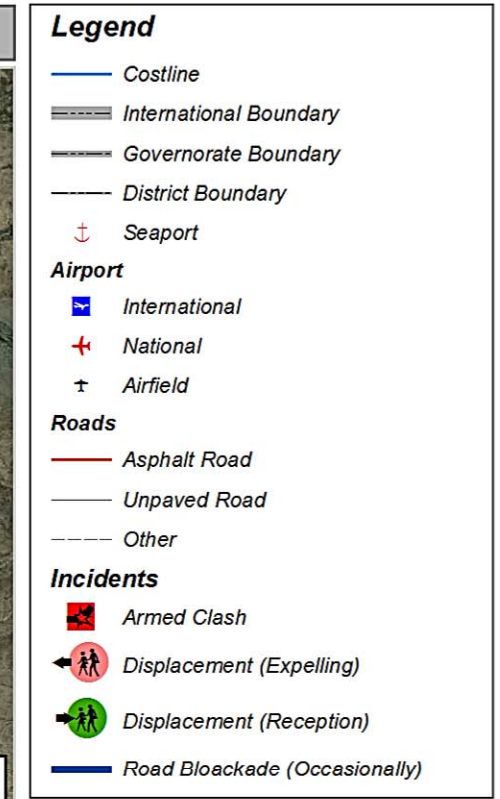
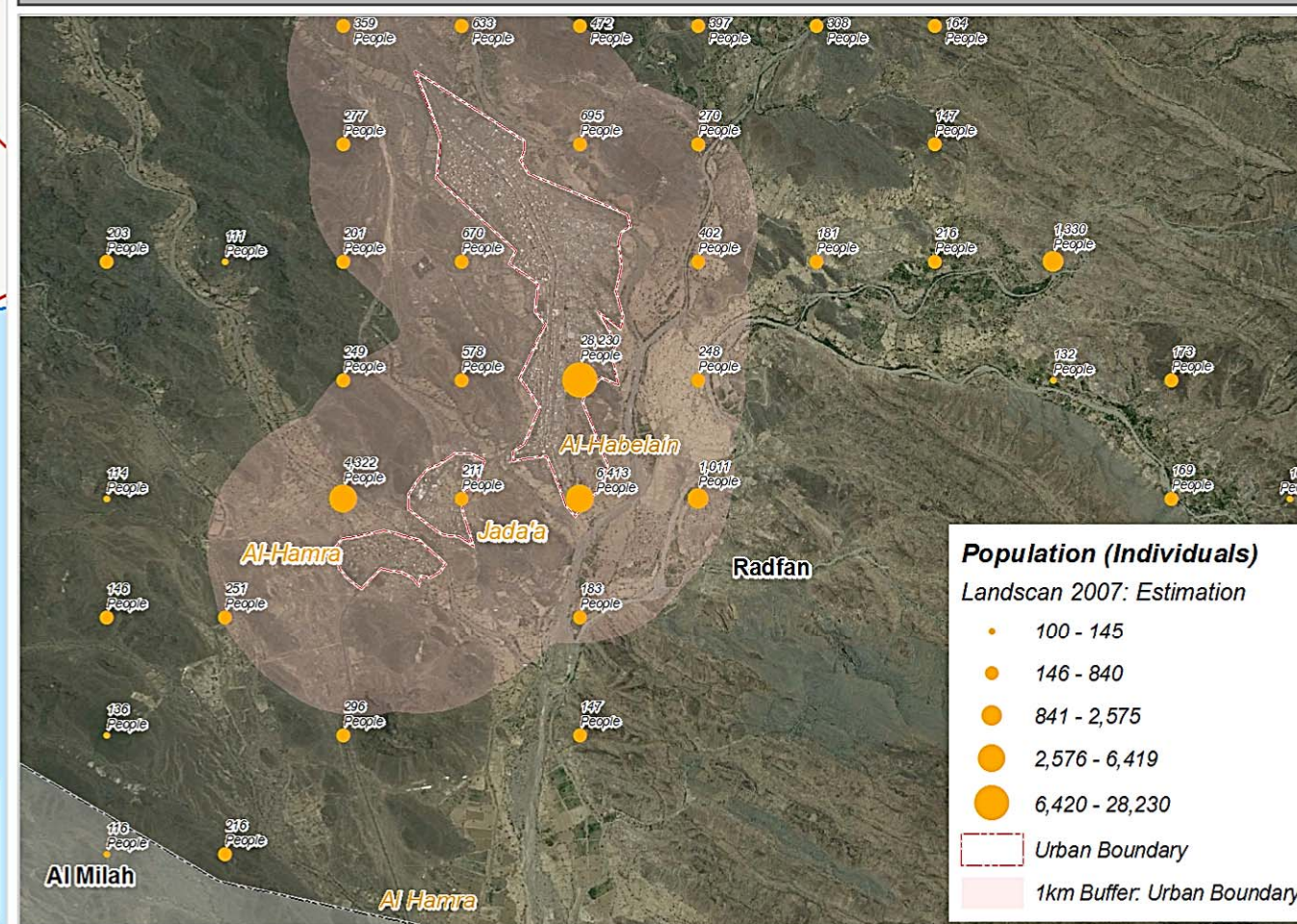


Lahj and Al Dhale'e Governorates - Summary of Conflict started on 19th Jan 2011

Date (24th January 2011)



Estimation of Population: Approx. 45,675 People Living within buffer zone



Map Doc Name: A3_Pop_Conflict_AlHabelain_Lahj_24012011

Creation Date: 21st January 2011

Projection/Datum: WGS84

Web Resources: <http://ochaonline.un.org/yemen>

Nominal Scale at A3 paper size: 1:644,363

Map data source(s): UNHCR, UNICEF NGOs and Displaced families.

This estimation of population was made utilizing the LandScan 2007TM High Resolution global Population Data Set copyrighted by UT-Battelle, LLC, operator of Oak Ridge National Laboratory under Contract No. DE-AC05-00OR22725 with the United States Department of Energy.

Disclaimers:
The designations employed and the presentation of material on this map do not imply the expression of any opinion whatsoever on the part of the Secretariat of the United Nations concerning the legal status of any country, territory, city or area or of its authorities, or concerning the delimitation of its frontiers or boundaries.

