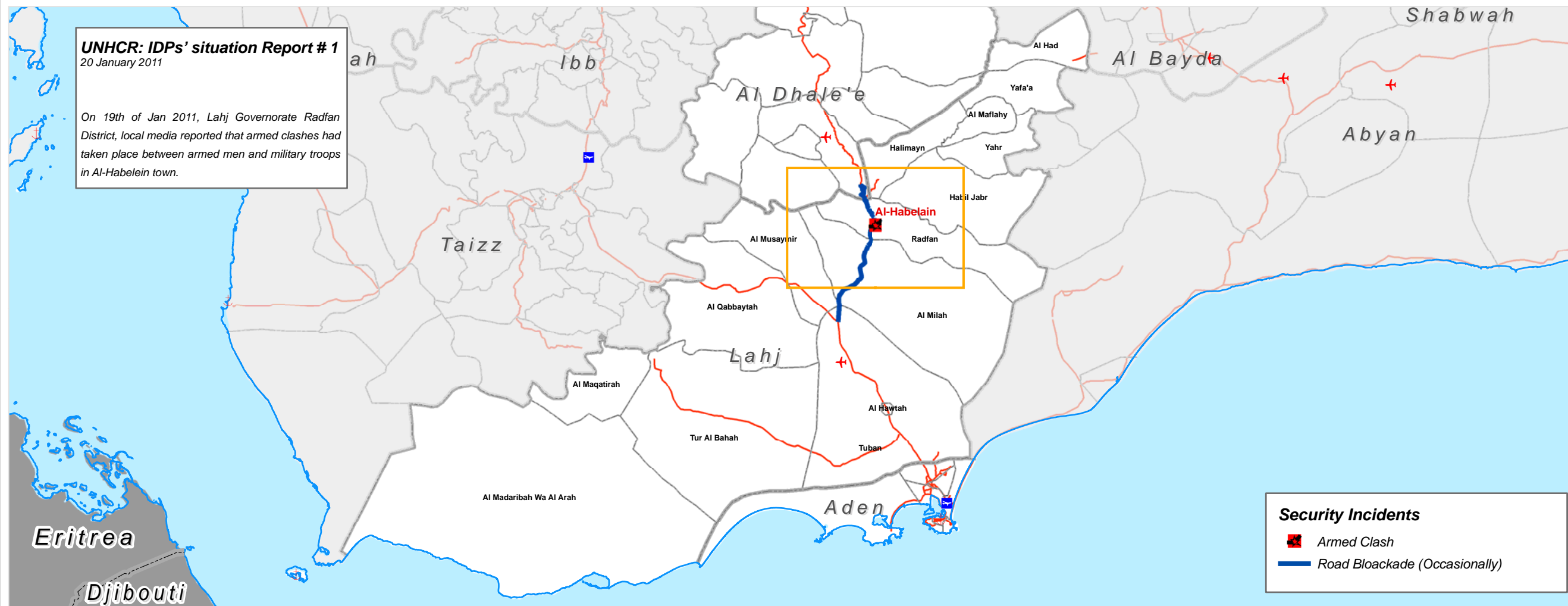


Lahj and Al Dhale'e Governorates - Summary of Conflict started on 19th Jan 2011

Date (21st January 2011)

UNHCR: IDPs' situation Report # 1
20 January 2011

On 19th of Jan 2011, Lahj Governorate Radfan District, local media reported that armed clashes had taken place between armed men and military troops in Al-Habelain town.

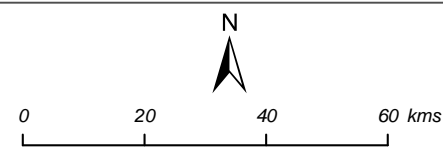


Legend

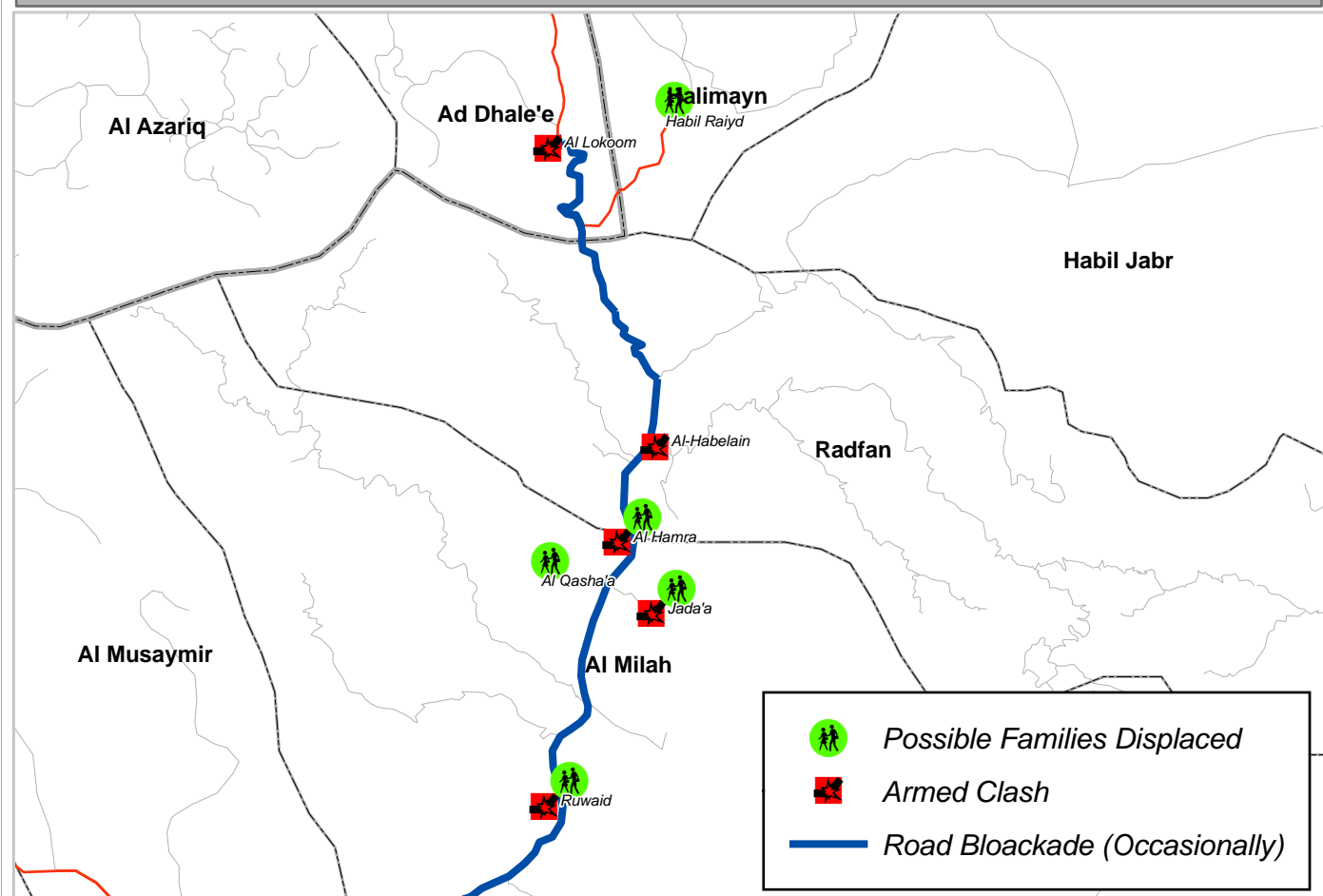
- Costline
- International Boundary
- Governorate Boundary
- District Boundary
- Roads**
- Asphalt Road
- Unpaved Road
- Other
- Seaport
- Airport**
- International
- National
- Airfield

Security Incidents

- Armed Clash
- Road Blockade (Occasionally)

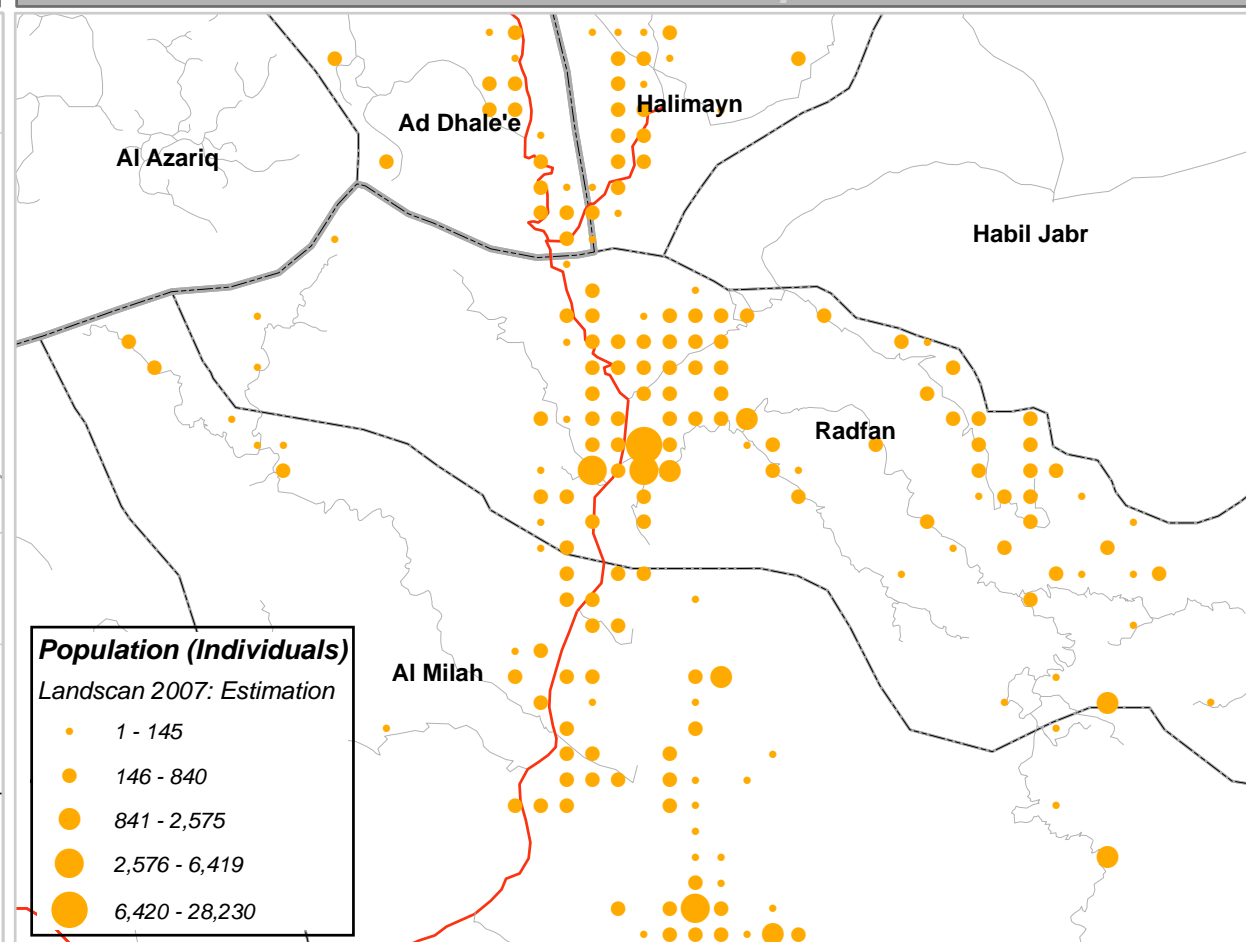


Area of Conflict



- Possible Families Displaced
- Armed Clash
- Road Blockade (Occasionally)

Estimation of Population



- Population (Individuals)**
Landsat 2007: Estimation
- 1 - 145
 - 146 - 840
 - 841 - 2,575
 - 2,576 - 6,419
 - 6,420 - 28,230

Map Doc Name:
A3_Conflict_AlHabelain_Lahj_21012011

Creation Date: 21st January 2011
Projection/Datum: WGS84
Web Resources: <http://ochaonline.un.org/yemen>
Nominal Scale at A3 paper size: 1:1,244,136

Map data source(s):
UNHCR, security personnel present in the area, SHS (UNHCR's implementing partner), UNICEF counterparts and Local Authorities in Radfan district.

Disclaimers:
The designations employed and the presentation of material on this map do not imply the expression of any opinion whatsoever on the part of the Secretariat of the United Nations concerning the legal status of any country, territory, city or area or of its authorities, or concerning the delimitation of its frontiers or boundaries.

