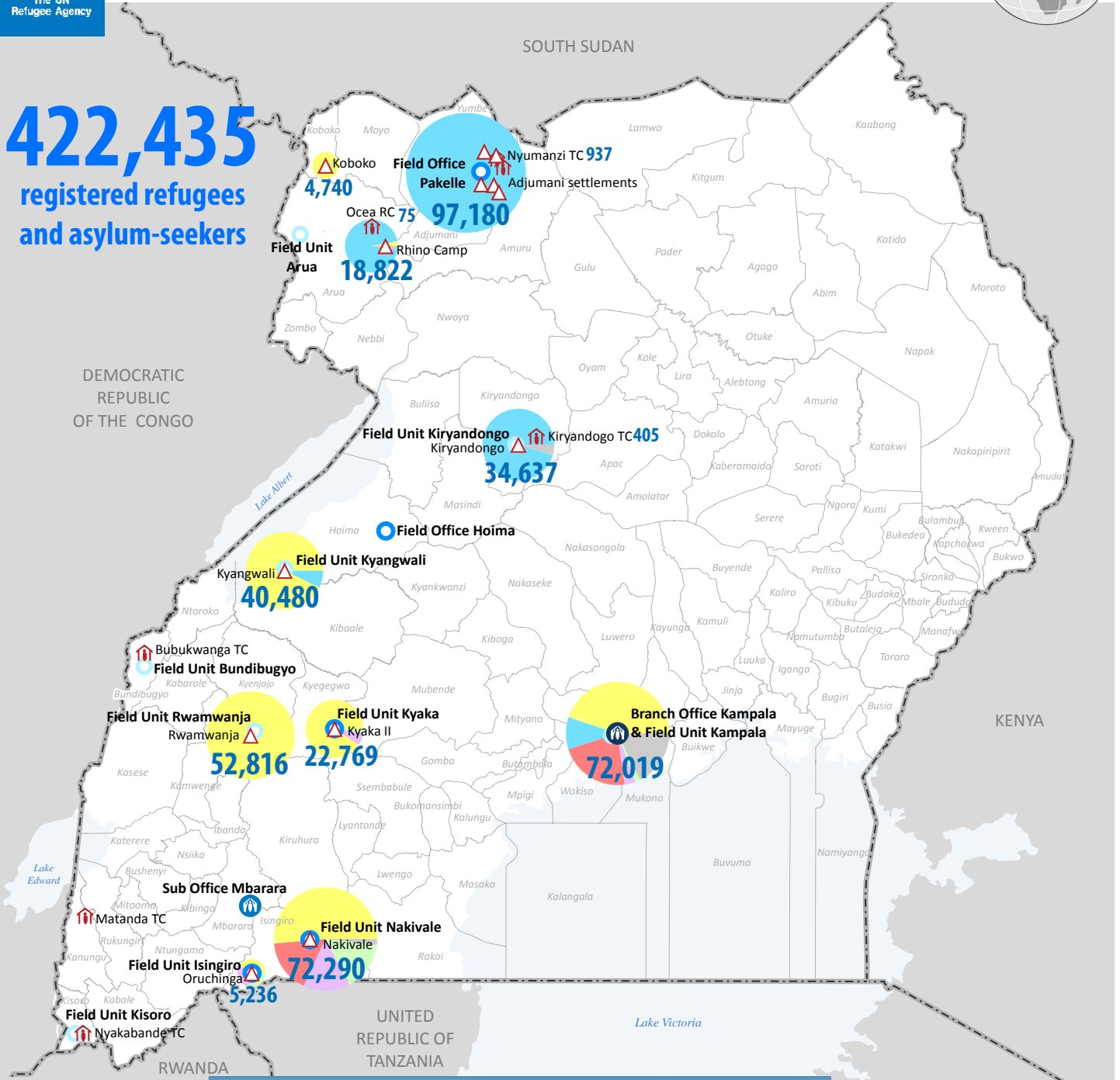


422,435
registered refugees
and asylum-seekers



Refugee Location	Country of Origin						Total	Percentage
	DR Congo	South Sudan	Somalia	Rwanda	Burundi	Others		
Adjumani	7	97,095	-	-	-	78	97,180	23%
Nakivale	37,175	24	12,000	10,566	11,151	1,374	72,290	17%
Kampala	32,366	7,245	15,995	2,461	1,147	12,805	72,019	17%
Rwamwanja	52,763	-	-	53	-	-	52,816	13%
Kyangwali	37,258	2,860	7	301	18	36	40,480	10%
Kiryandongo	203	32,811	1	26	15	1,581	34,637	8%
Kyaka II	20,615	3	2	1,582	535	32	22,769	5%
Rhino Camp	535	17,848	-	17	8	414	18,822	4%
Oruchinga	2,147	-	-	1,595	1,493	1	5,236	1%
Koboko	4,740	-	-	-	-	-	4,740	1%
Nyumanzi reception centre	-	937	-	-	-	-	937	0.2%
Kiryandongo Transit Centre	-	405	-	-	-	-	405	0.1%
Ocea reception centre	-	75	-	-	-	-	75	0.02%
Nyakabande transit centre	29	-	-	-	-	-	29	0.01%
Total	187,838	159,303	28,005	16,601	14,367	16,321	422,435	
Percentage	44%	38%	7%	4%	3%	4%		

- UNHCR Branch Office
- UNHCR Sub Office
- UNHCR Field Office
- UNHCR Field Unit
- Refugee settlement
- Refugee transit centre
- International boundary
- District boundary

Source countries of refugees

- DR Congo [45%]
- South Sudan [38%]
- Somalia [6%]
- Rwanda [4%]
- Burundi [3%]
- Others [4%]

The boundaries and names shown and the designations used on this map do not imply official endorsement or acceptance by the United Nations.
 Creation date: 13 January 2015 Sources: UNHCR Kampala, UNCS Feedback: UNHCR Regional Support Hub in Nairobi kenrgsis@unhcr.org

