

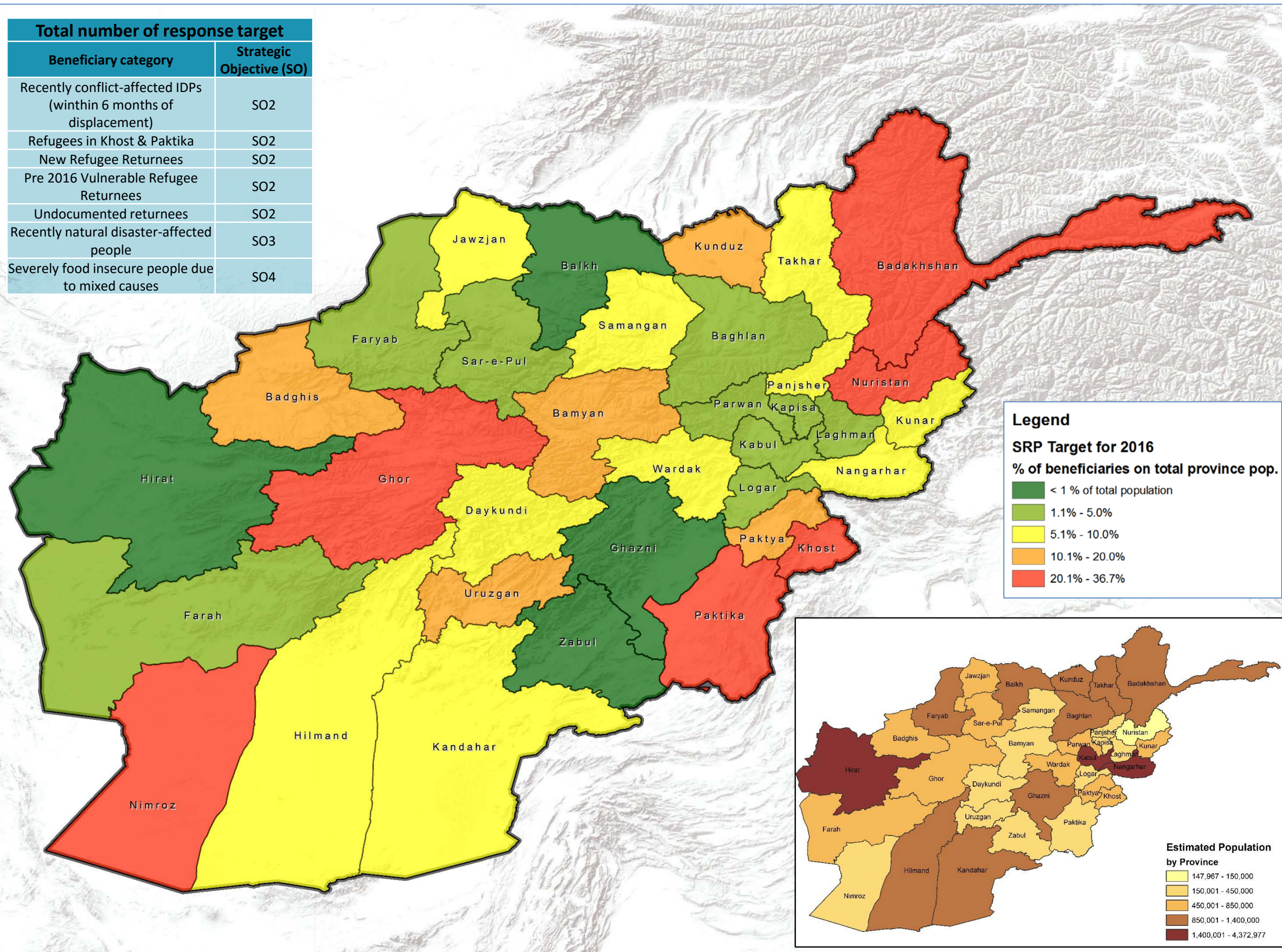


**Disclaimer and Source:** This map is compiled by iMMAP. Datum/Projection: WGS84/Geographic. Date created: 13/04/2016.

iMMAP in Afghanistan is funded by The United States Agency for International Development (USAID)/ Office of U.S. Foreign Disaster Assistance (OFDA). The data, boundaries and names and the designations used on this map do not imply official endorsement or acceptance by iMMAP or USAID/OFDA. All information is the best available at the time this map was produced. For copies or information regarding specific data sources and methodology: Afghanistan@immap.org

**Data source:** Food Security and Agriculture Cluster (FSAC)

Total number of response target	
Beneficiary category	Strategic Objective (SO)
Recently conflict-affected IDPs (within 6 months of displacement)	SO2
Refugees in Khost & Paktika	SO2
New Refugee Returnees	SO2
Pre 2016 Vulnerable Refugee Returnees	SO2
Undocumented returnees	SO2
Recently natural disaster-affected people	SO3
Severely food insecure people due to mixed causes	SO4



Province Name	Total Population	SRP Target for 2016
		TOTAL Target
Kabul	4,372,977	59,090
Kapisa	441,010	16,102
Parwan	664,502	19,549
Wardak	596,287	42,033
Logar	392,045	13,356
Nangarhar	1,517,388	133,749
Laghman	445,588	20,316
Panjsher	153,487	8,217
Baghlan	910,784	26,596
Bamyan	447,218	73,670
Ghazni	1,228,831	10,166
Paktika	434,742	133,581
Paktya	551,987	64,631
Khost	574,582	211,035
Kunar	450,652	30,006
Nuristan	147,967	38,024
Badakhshan	950,953	193,702
Takhar	983,336	78,472
Kunduz	1,010,037	111,986
Samangan	387,928	27,020
Balkh	1,325,659	8,967
Sar-i-pul	559,577	6,243
Ghor	690,296	158,306
Daykundi	424,339	32,544
Urozgan	386,818	47,098
Zabul	304,126	1,472
Kandahar	1,226,593	86,872
Jawzjan	540,255	28,718
Faryab	998,147	28,147
Helmand	924,711	55,540
Badghis	495,958	71,369
Hirat	1,890,202	14,840
Farah	507,405	12,622
Nimroz	164,978	35,932
<b>Total:</b>	<b>27,101,365</b>	<b>1,899,970</b>