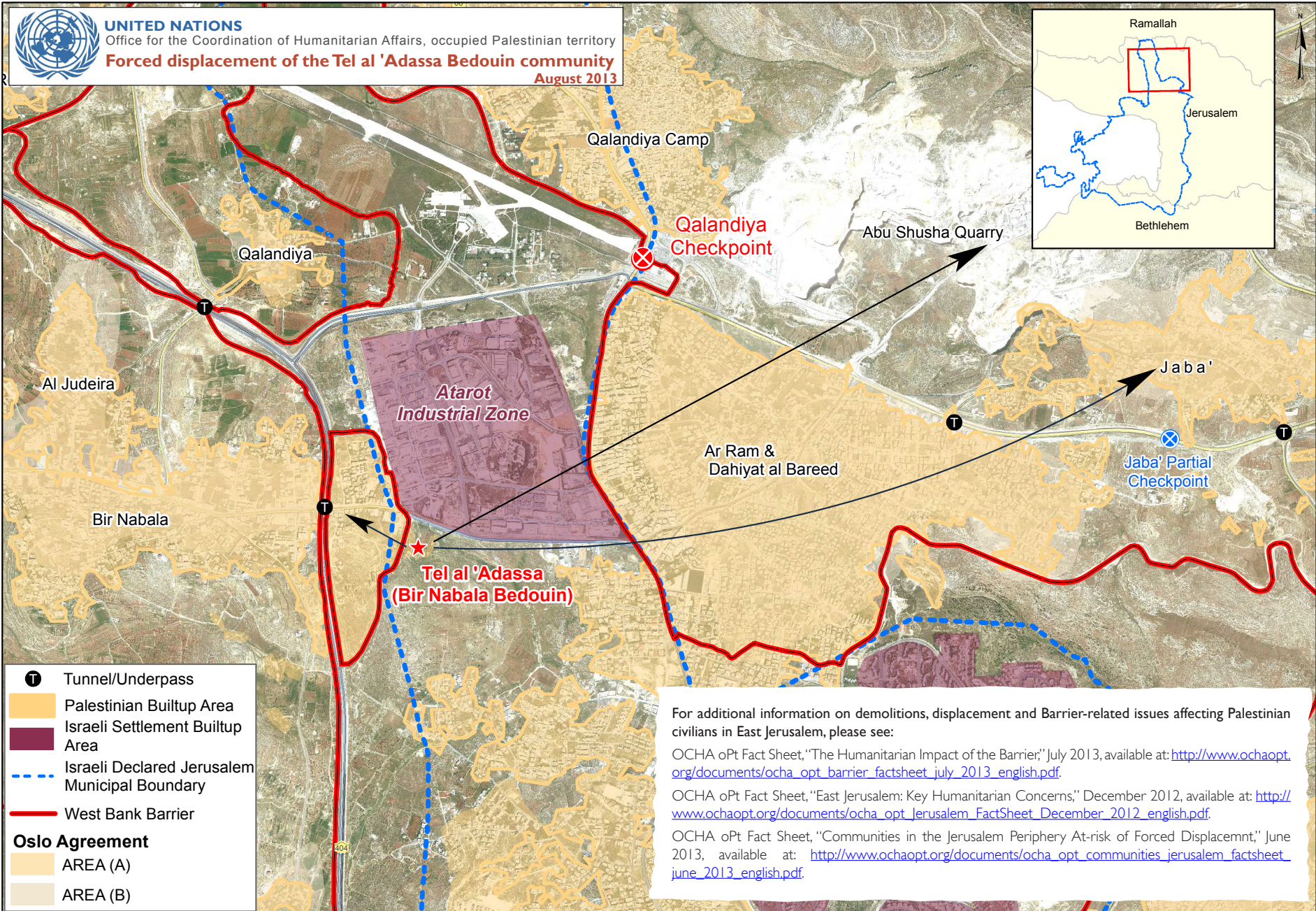




UNITED NATIONS
Office for the Coordination of Humanitarian Affairs, occupied Palestinian territory
Forced displacement of the Tel al 'Adassa Bedouin community
August 2013



- Tunnel/Underpass
- Palestinian Builtup Area
- Israeli Settlement Builtup Area
- Israeli Declared Jerusalem Municipal Boundary
- West Bank Barrier
- Oslo Agreement**
- AREA (A)
- AREA (B)

For additional information on demolitions, displacement and Barrier-related issues affecting Palestinian civilians in East Jerusalem, please see:
 OCHA oPt Fact Sheet, "The Humanitarian Impact of the Barrier," July 2013, available at: http://www.ochaopt.org/documents/ocha_opt_barrier_factsheet_july_2013_english.pdf.
 OCHA oPt Fact Sheet, "East Jerusalem: Key Humanitarian Concerns," December 2012, available at: http://www.ochaopt.org/documents/ocha_opt_jerusalem_FactSheet_December_2012_english.pdf.
 OCHA oPt Fact Sheet, "Communities in the Jerusalem Periphery At-risk of Forced Displacement," June 2013, available at: http://www.ochaopt.org/documents/ocha_opt_communities_jerusalem_factsheet_june_2013_english.pdf.