

IDP Movement Trend in the Three Northern Governorates

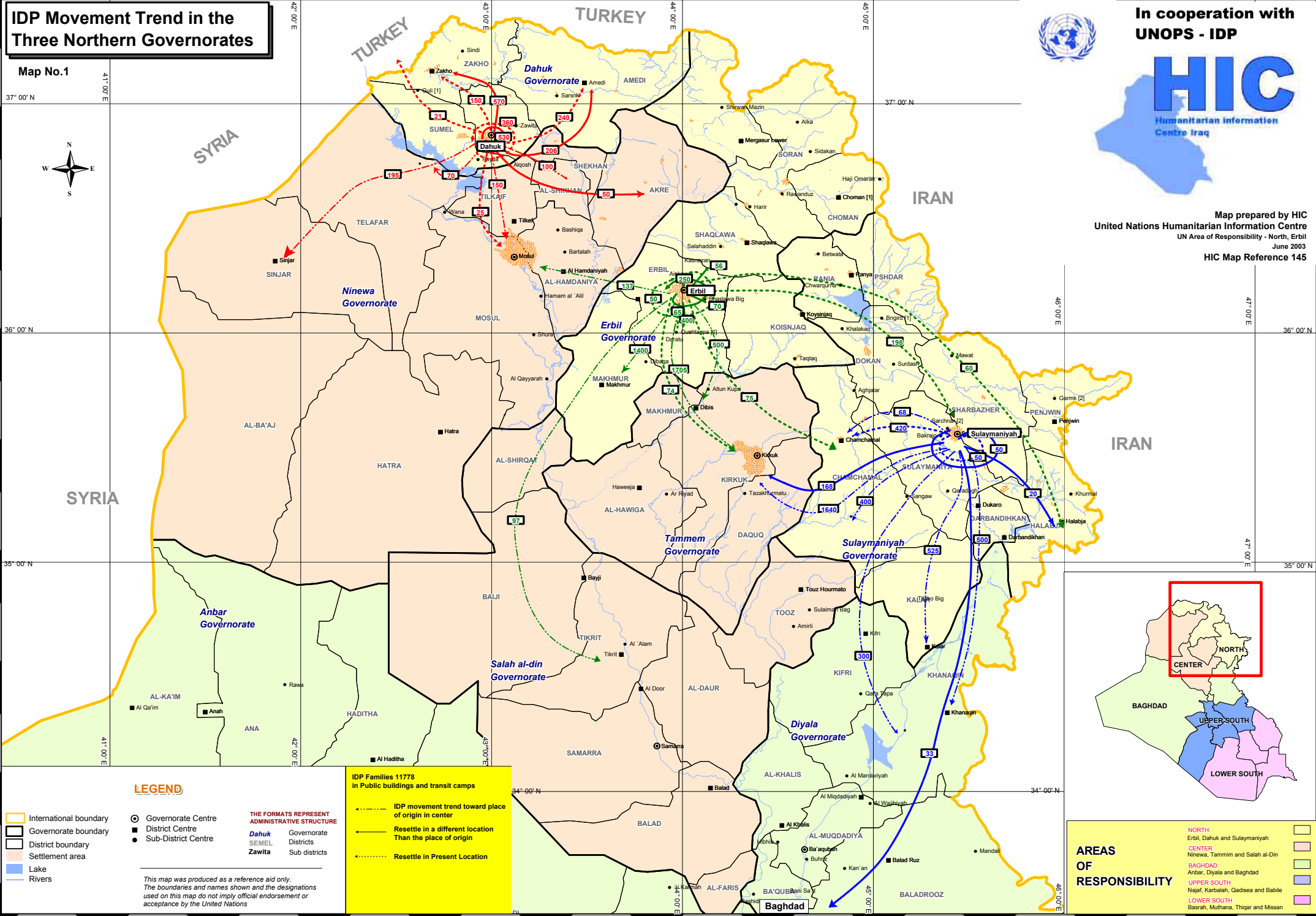
Map No.1



In cooperation with UNOPS - IDP



Map prepared by HIC
United Nations Humanitarian Information Centre
UN Area of Responsibility - North, Erbil
June 2003
HIC Map Reference 145



LEGEND

- International boundary
- Governorate boundary
- District boundary
- Settlement area
- Lake
- Rivers

○ Governorate Centre
 ■ District Centre
 ● Sub-District Centre

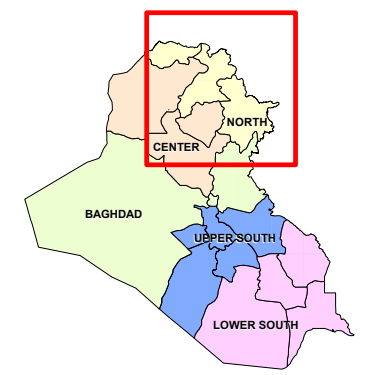
THE FORMATS REPRESENT ADMINISTRATIVE STRUCTURE

- Dahuk Governorate
- SEMEL Districts
- Zawita Sub districts

IDP Families 11778 in Public buildings and transit camps

- IDP movement trend toward place of origin in center
- Resettle in a different location than the place of origin
- Resettle in Present Location

This map was produced as a reference aid only. The boundaries and names shown and the designations used on this map do not imply official endorsement or acceptance by the United Nations



AREAS OF RESPONSIBILITY

- NORTH: Erbil, Dahuk and Sulaymaniyah
- CENTER: Ninewa, Tammim and Salah al-Din
- BAGHDAD: Anbar, Diyala and Baghdad
- UPPER SOUTH: Najaf, Karbala, Qadisia and Babil
- LOWER SOUTH: Basrah, Muthana, Thiqr and Missan