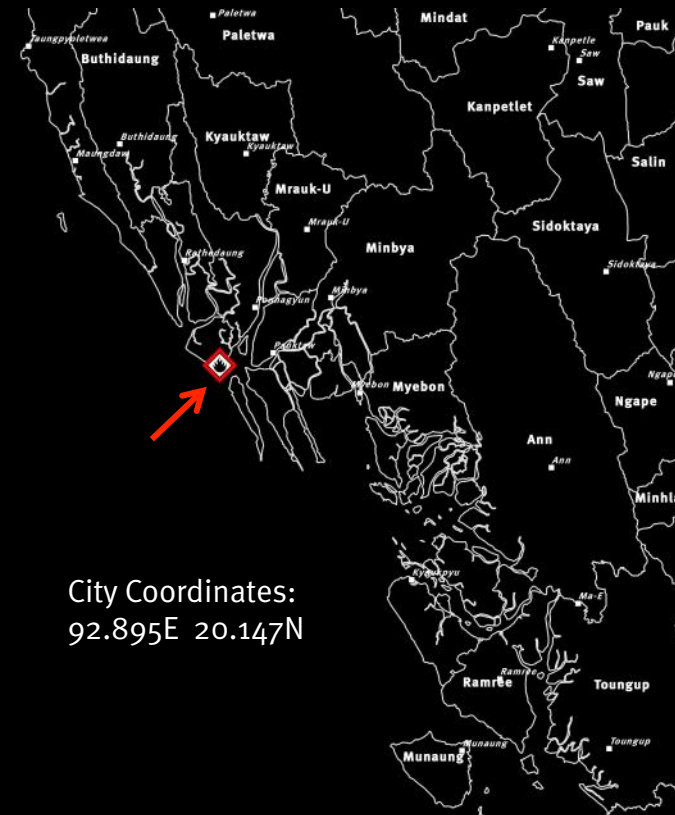


Satellite-Based Damage Assessment for City of Sittwe, Sittwe Township

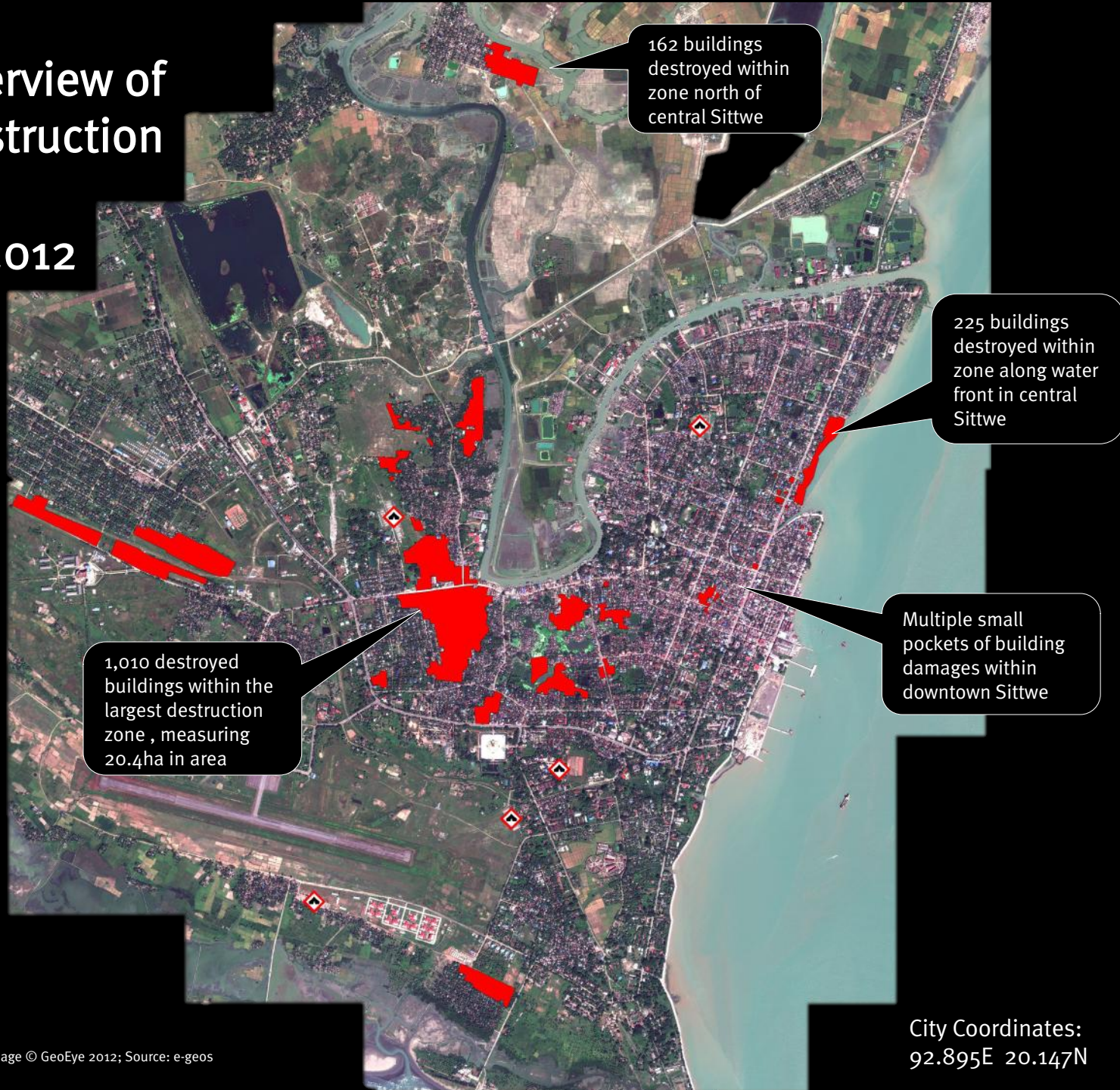
Assessment based on satellite imagery recorded on morning of 31 October 2012

Summary of main findings: A total of 2,558 destroyed and severely damaged buildings were identified within the city of Sittwe in Sittwe Township, likely caused by arson attacks. Damages are spatially concentrated within multiple, well-defined zones of near total destruction measuring 66.4 hectares (ha) in total area. These zones are distributed across the city, with the highest concentration located west of downtown. In addition to these large clusters of destruction, there are multiple smaller pockets of mostly severe building damages located within downtown Sittwe. It is likely that a significant percent of destroyed small, residential buildings have not been identified because of extensive tree cover. Following these probable arson attacks, at least five large campsites were erected for people internally displaced by the destruction of their homes.



City Coordinates:
92.895E 20.147N

Sittwe – Overview of Building Destruction Zones as on 31 October 2012



City Coordinates:
92.895E 20.147N

Sittwe (Destruction Zone 1) on 21 February 2011

Pre-attack view of largest concentration of building destruction



Sittwe (Destruction Zone 1) on 31 October 2012

Post-attack view of largest concentration of building destruction



Sittwe (Destruction Zone 1) on 31 October 2012

Post-attack view of largest concentration of building destruction—Damage sites annotated



Over 330 buildings destroyed within zone of destruction on left side of main road

Small zone of building destruction across from main city pagoda

Over 680 buildings destroyed within zone of destruction on right side of main road

Large IDP camp site

Sittwe (Destruction Zone 2) on 21 February 2011

Pre-attack view of northern-most concentration of building destruction



Sittwe (Destruction Zone 2) on 31 October 2012

Post-attack view of northern-most concentration of building destruction



Sittwe (Destruction Zone 2) on 31 October 2012:

Post-attack view of northern-most concentration of building destruction—Damage sites annotated



162 buildings destroyed within zone

Distinct boundary line between destroyed and likely undamaged buildings

Sittwe (Destruction Zone 3) on 21 February 2011

Pre-attack view of concentration of building destruction along water front

Zone Coordinates: 92.9035E 20.1514N



Damage Analysis: Human Rights Watch
Image © DigitalGlobe 2012
Source: EUSI

Satellite image has been rotated by 112
degrees to improve visualization

Sittwe (Destruction Zone 3) on 31 October 2012

Post-attack view of concentration of building destruction along water front

Zone Coordinates: 92.9035E 20.1514N



Damage Analysis: Human Rights Watch
Image © GeoEye 2012
Source: e-geos

Satellite image has been rotated by 112 degrees to improve visualization

Sittwe (Destruction Zone 3) on 31 October 2012

Post-attack view of concentration of building destruction along water front

Zone Coordinates: 92.9035E 20.1514N



225 buildings destroyed within zone along water front in central Sittwe

Distinct boundary line between destroyed and likely undamaged buildings