

# Satellite-Based Damage Assessment for Village of Yan Thei, Mrauk-U Township

Assessment based on satellite imagery recorded on morning of 3 November 2012

Summary of main findings: A total of 344 destroyed and severely damaged buildings were identified within the village of Yan Thei in Mrauk-U township, likely caused by arson attacks occurring before 3 November 2012. This zone of near total destruction measures 26.3 hectares (ha) in area, and represents near 100% of village structures. There are no indications of building damages in the surrounding villages.



Village Coordinates:  
93.2165E 20.5013N

# Yan Thei Village, Mrauk-U Township, on 11 February 2012

Pre-attack view of village in satellite imagery





# Yan Thei Village, Mrauk-U Township, on 3 November 2012

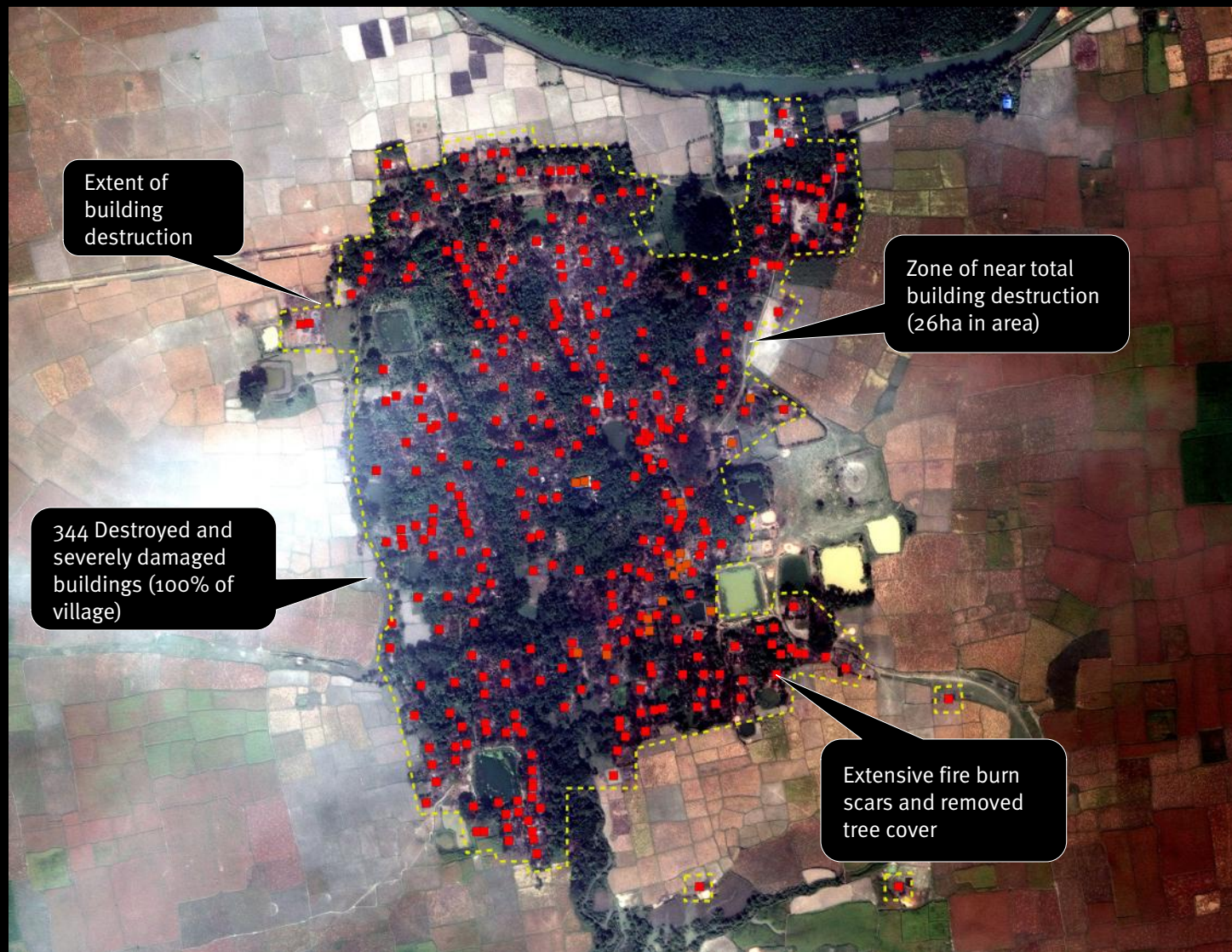
Post-attack view of village in satellite image without annotated building damages





# Yan Thei Village, Mrauk-U Township, on 3 November 2012

Post-attack view of village in satellite image with annotated building damages





# Yan Thei Village, Mrauk-U Twonship, on 11 February 2012

Pre-attack view of village with satellite imagery displayed in false-color, near-infrared in order to highlight areas of extensive fire-related damages within the village





# Yan Thei Village, Mrauk-U Township, on 3 November 2012

Post-attack view of village with satellite imagery displayed in false-color, near-infrared in order to highlight areas of extensive fire-related damages within the village

