



unitar
United Nations Institute for Training and Research

UNOSAT

Complex Emergency



Production Date: 10/12/2013

Version 2.0

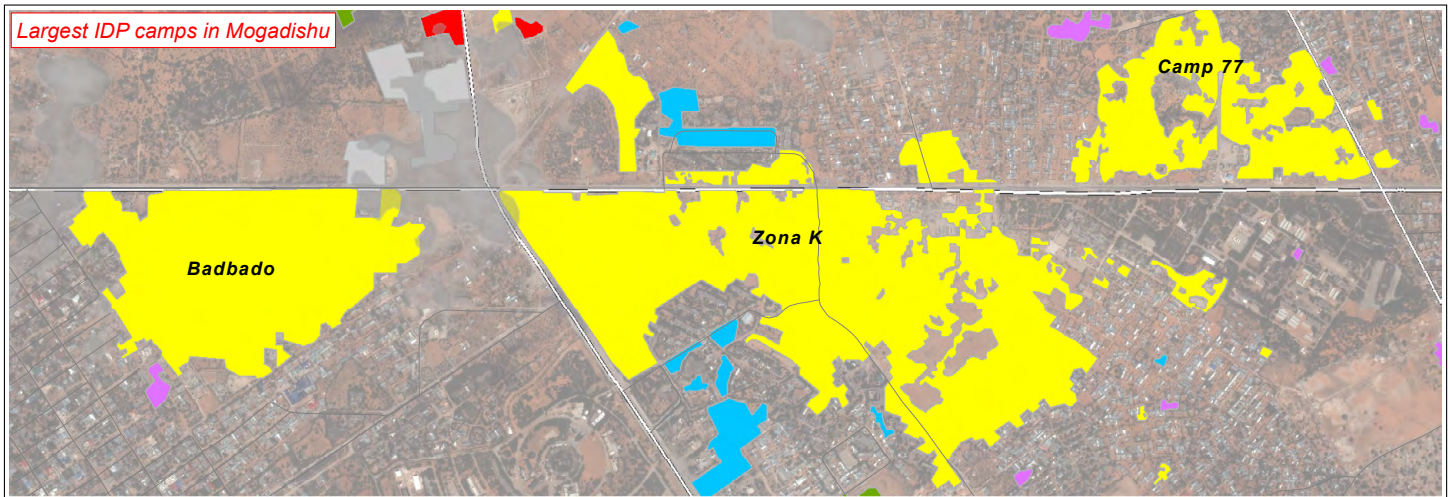
Activation Number: CE20130710SOM

UPDATE 6: REDUCTION OF SOMALI IDP SHELTER CONCENTRATIONS IN MOGADISHU, SOMALIA (3 JUNE 2013 - 24 NOVEMBER 2013)



Summary: A total of 324 spatially distinct IDP shelter concentrations were identified as of 24 November 2013 within Mogadishu, representing a decrease of 56 IDP sites since the last UNOSAT analysis which used an image from 13 June 2013. An estimate of the total number of IDP structures located in Mogadishu indicates a minimum figure of at least 55,000 mostly informal shelters. The number of IDP camps has significantly reduced in multiple areas of Mogadishu. This report is the sixth in a series of IDP analyses done by UNOSAT since 2011 and is based on a time-series analysis of shelter concentrations within the city of Mogadishu using multiple satellite images acquired between 30 March 2011 and 24 November 2013. This assessment has not yet been validated in the field. Please send feedback to UNITAR/UNOSAT.

Report Highlights:



- Open - New
- Open - Expanded
- Open - Contracted
- Open - No Change
- Closed
- Primary Road
- Local / Urban Road

Map Scale for A4: 1:20,000
Meters
0 125 250 375 500

UNITAR / UNOSAT
unosat@unitar.org
Palais des Nations,
Geneva, Switzerland
T: +41 22 767 4020
24/7 hotline: +41 76 487 4998
www.unitar.org/unosat

The depiction and use of boundaries, geographic names and related data shown here are not warranted to be error-free nor do they imply official endorsement or acceptance by the United Nations. UNOSAT is a program of the United Nations Institute for Training and Research (UNITAR), providing satellite imagery and related geographic information, research and analysis to UN humanitarian and development agencies and their implementing partners.

Satellite Data: QB / WV01 / WV02 / GE01 / Pleiades
Dates: 30/03/11, 15/4/11, 28/07/11, 21-22/08/11, 4, 12/09/11, 7, 15, 18/10/11, 02/05/12, 3/06/2013, 24/11/2013
Resolution: 0.6 m/0.5 m

Copyright: DigitalGlobe 2012 / GeoEye 2012 / Astrium 2013
Sources: US Department of State, Humanitarian Information Unit, NextView License, EUSI,eGeos

IDP Camp Data: UNITAR / UNOSAT
Landcover: UNITAR / UNOSAT
Road Data: Google Map Maker
Admin Boundaries: OCHA
Other Data: USGS, NGA, SWALIM
Analysis: UNITAR / UNOSAT

This work by UNITAR/UNOSAT is licensed under a Creative Commons Attribution-NonCommercial-ShareAlike 3.0 Unported License.



unitar

United Nations Institute for Training and Research

UNOSAT

10 December 2013 – Update 6

UNOSAT Activation: CE20130710SOM

Updated Assessment of IDP Shelter Concentrations in Mogadishu, Somalia (as of 24 November 2013)

PREFACE: This report provides a detailed analysis of spatially-distinct concentrations of IDP shelters within the urban extent of Mogadishu, and assesses the periods in which the camp sites were likely formed as well as the larger settlement patterns and trends of IDP movements. Satellite imagery acquired on 3 June 2013 was compared with an image from 24 November 2013 for this report, which is the sixth update on IDPs in Mogadishu done by UNOSAT since 2011. There are known IDP settlements located within permanent buildings that have not been identified in the analysis and are not reflected in the estimates presented in this report. Geographic datasets produced for this assessment and additional UNOSAT Horn of Africa products are available at <http://www.unitar.org/unosat/horn-africa-data>. This report is part of an on-going satellite monitoring program of UNITAR/ UNOSAT for Somalia in support of international humanitarian assistance. This assessment has not yet been validated in the field. Please send feedback to UNITAR/UNOSAT at the contact information on page 1.

1. DRAMATIC IDP CAMP AND POPULATION CHANGES - SUMMARY BY DISTRICT

There has been a sustained, large scale internal movement of Somali IDPs within Mogadishu between 3 June 2013 and 24 November 2013, as indicated by a 15% decrease in the total number of open, spatially-distinct IDP shelter sites from 379 to 324 during this more than one year period; further, there has been a large apparent decrease in the total number of IDP shelters as suggested by the 33% reduction in the total surface area of IDP sites, from 3.3 million square meters to 2.2 million square meters during this same period. *Table 1* below contains a detailed breakdown of this updated IDP shelter analysis by city district. The overview map on page 4 presents the location and status changes of the 324 IDP shelter sites identified across the city.

Table 1 – Changes in IDP shelters between 3 June 2013 and 24 November 2013 by district

Mogadishu Districts:	16-Jun-13	24-Nov-13			16-Jun-13	24-Nov-13		
	# of distinct IDP shelter sites	# of distinct IDP shelter sites	CHANGE in Total Number	CHANGE (%)	Total area of IDP Shelter sites (m2)	Total area of IDP Shelter sites (m2)	CHANGE in Total Area (m2)	CHANGE (%)
Cabdalcasiis	11	10	-1	-9%	28,086	24,531	-3,555	-13%
Boondheere	14	9	-5	-36%	28,857	26,287	-2,570	-9%
Daynile	17	21	4	24%	605,753	542,995	-62,758	-10%
Dharkenley	12	10	-2	-17%	329,615	317,253	-12,362	-4%
Gupta (*)	11	5	-6	-55%	19,669	5,546	-14,123	-72%
Xamar Jab-Jab	15	12	-3	-20%	11,372	9,970	-1,402	-12%
Xamar Weyne	4	4	0	0%	7,817	7,816	-1	0%
Hawl Wadaag	44	35	-9	-20%	101,357	85,645	-15,712	-16%
Hodan	78	66	-12	-15%	1,112,557	422,892	-689,665	-62%
Heliwa	14	13	-1	-7%	113,042	114,664	1,622	1%
Karaan	33	36	3	9%	420,037	156,747	-263,290	-63%
Mahad Allah (*)	1	1	0	0%	4,287	4,990	703	16%
Shibis	14	12	-2	-14%	38,068	29,233	-8,835	-23%
Shangaani	6	6	0	0%	11,675	11,169	-506	-4%
Waaberi	25	6	-19	-76%	50,507	12,390	-38,117	-75%
Wadajir	40	41	1	3%	361,774	388,080	26,306	7%
Wardhiigleey	25	24	-1	-4%	83,874	81,894	-1,980	-2%
Yaaqshiid	15	12	-3	-20%	12,444	9,912	-2,532	-20%
TOTALS	379	324	-56	-15%	3,340,791	2,252,014	-1,088,777	-33%

(*) These districts are technically outside Mogadishu but are suburbs and are provided to indicate changes on the perimeter of the city

As of 24 November 2013, there were a total of 324 spatially distinct and functioning IDP shelter concentrations located in Mogadishu, representing a decrease of 56 IDP sites since 2 May 2012. Based on a temporal comparison over this one year period between 2 May 2012 and 3 June 2013 (see *Table 2* below), 12 camp sites were newly formed, 18 existing sites showed indications of significant expansion in size, 98 existing sites contracted in size, 426 sites closed or were absorbed into adjacent camps, and the remaining 189 shelter sites remained static and without notable changes in either size or shelter density.

The 12 newly-erected sites were distributed on the periphery of Mogadishu, almost entirely in the Daynile and road to Afgoye. Notably, the vast majority of changes observed in this analysis concern the continued reduction in IDP sites throughout Mogadishu, with the formerly large IDP populations in Waaberi, Hodan, and elsewhere either completely closed or significantly reduced in size. While Hodan, Hawl Wadaag and Boondhere still contain significant IDP populations the majority of IDP growth areas are now in Daynile, the road to Afgoye, and Wadajir. Please reference the overview map on page 4 for a detailed visualization of the location and distribution of the IDP camp changes across Mogadishu.

Table 2 - Changes in IDP shelter sites between 2 May 2012 and 3 June 2013

Mogadishu Districts:	16-Jun-13	24 November 2013 (Camp Status Changes between 16 JUNE 2013 - 24 NOVEMBER 2013)								
	# of distinct IDP shelter sites	# of distinct IDP shelter sites	New Sites	Expanded	No Change	Contracted	Closed	Reopened	CHANGE in Total Number	CHANGE (%)
Cabdalcasiis	11	10	0	0	7	3	8	0	-1	-9%
Boondheere	14	9	0	1	5	3	20	0	-5	-36%
Daynile	17	21	7	4	4	6	5	0	4	24%
Dharkenley	12	10	0	0	7	2	28	1	-2	-17%
Gupta (*)	11	5	1	1	0	3	8	0	-6	-55%
Xamar Jab-Jab	15	12	1	1	9	1	16	0	-3	-20%
Xamar Weyne	4	4	0	0	4	0	6	0	0	0%
Hawl Wadaag	44	35	0	2	16	15	44	2	-9	-20%
Hodan	78	66	0	1	32	33	72	0	-12	-15%
Heliwa	14	13	0	1	10	2	25	0	-1	-7%
Karaan	33	36	1	3	26	4	32	2	3	9%
Mahad Allah (*)	1	1	0	1	0	0	4	0	0	0%
Shibis	14	12	0	0	11	1	16	0	-2	-14%
Shangaani	6	6	0	0	5	1	3	0	0	0%
Waaberi	25	6	0	1	5	0	29	0	-19	-76%
Wadajir	40	41	1	2	20	18	40	1	1	5%
Wardhiigleey	25	24	1	0	18	4	22	1	-1	-4%
Yaaqshiid	15	12	0	0	10	2	49	0	-3	-20%
TOTALS	379	324	12	18	189	98	426	7	-56	-15%

(**) These districts are technically outside Mogadishu but are suburbs and are provided to indicate changes on the perimeter of the city

2. ESTIMATING A GLOBAL IDP SHELTER COUNT FOR MOGADISHU

An estimate of the total number of shelter structures (i.e. informal shelters and formal tents) in Mogadishu as of 24 November 2013 resulted in a minimum figure of over 55,000 IDP structures located within the 324 identified sites across the city districts. An additional 27,000 estimated shelters are now located outside of Mogadishu and especially along to road to Afgoye. This estimate was based on a methodology employed by and used in coordination with UNHCR¹. The previous shelter estimate for 16 June 2013 resulted in a figure of approximately 61,000 shelters within the city districts.

These estimates were based on average shelter density of camp sites using both manual shelter counts from satellite imagery as well as field based counts (produced by UNHCR staff and coordinating NGOs). This is a preliminary shelter estimate, and is likely to represent a reliable minimum figure; actual IDP shelter numbers within Mogadishu are likely to be larger.²

¹ Using a sliding scale of density factors (i.e. average number of shelter structures per area unit (m²)).

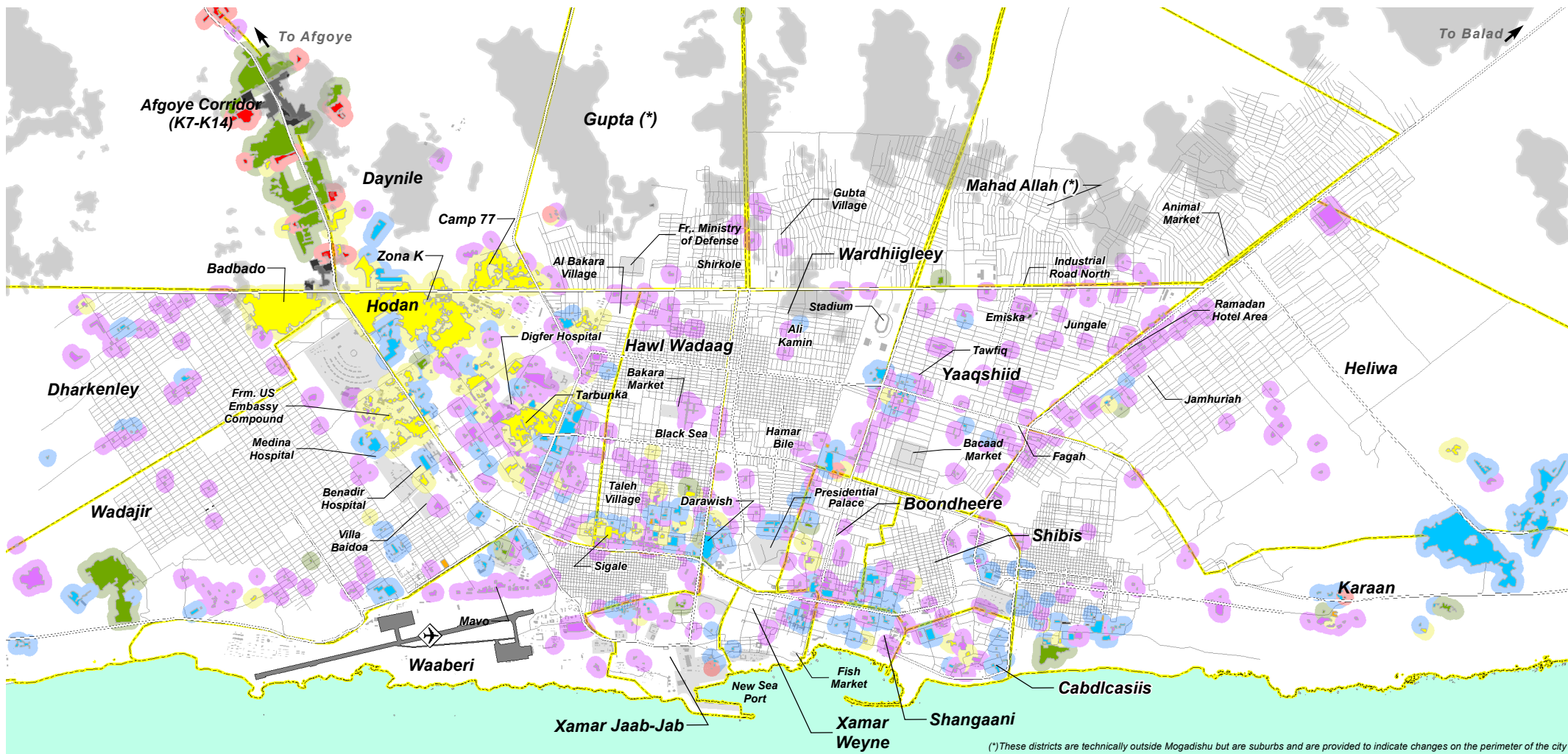
² It is probable that hundreds of IDP shelters are located under trees and roof-overhangs along buildings thus preventing identification in satellite imagery. Also not considered are IDP populations residing within permanent buildings, nor the reported incidents of fake camps erected for extracting additional aid.

IDP SHELTER CHANGES IN MOGADISHU, SOMALIA (BETWEEN 3 JUNE 2013 - 24 NOVEMBER 2013)

Complex Emergency Production Date: 10/12/2013



Version 2.0
UNOSAT Activation: CE20130710SOM



(*) These districts are technically outside Mogadishu but are suburbs and are provided to indicate changes on the perimeter of the city

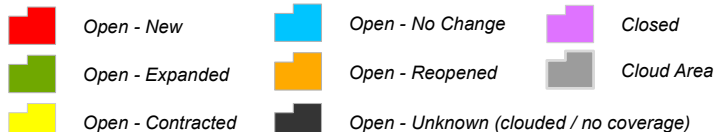
Data Frame rotated 27 degrees from North

Map Scale for A4: 1:65,000



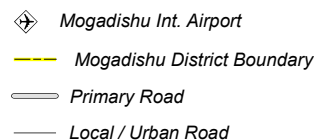
UNITAR / UNOSAT
unosat@unitar.org
Palais des Nations,
Geneva, Switzerland
T: +41 22 767 4020 (Operations)
24/7 hotline: +41 76 487 4998
www.unitar.org/unosat

IDP Camp Status: (3 June 2013- 24 November 2013)



Satellite Data: QB / WV01 / WV02 / GE01/ Pleiades
Dates: 30/03/11, 15/4/11, 28/07/11, 21-22/08/11,
4, 12/09/11, 7, 15, 18/10/11, 02/05/12, 3/06/2013,
24/11/2013
Resolution: 0.6 m/0.5 m
Copyright: DigitalGlobe 2012; GeoEye 2012; Astrium
2013

Sources: US Department of State, Humanitarian
Information Unit, NextView License, EUSI, eGeos
IDP Camp Data: UNITAR / UNOSAT
Landcover: UNITAR / UNOSAT
Road Data: Google Map Maker
Admin Boundaries: OCHA
Other Data: USGS, NGA, SWALIM



Analysis: UNITAR / UNOSAT
Coordinate System: UTM Zone 38N
Datum: WGS 1984
Analysis conducted with ArcGIS v10.1



unitar

UNOSAT

The depiction and use of boundaries, geographic names and related data shown here are not warranted to be error-free nor do they imply official endorsement or acceptance by the United Nations. UNOSAT is a program of the United Nations Institute for Training and Research (UNITAR), providing satellite imagery and related geographic information, research and analysis to UN humanitarian & development agencies & their implementing partners.

This work by UNITAR/UNOSAT is licensed under a Creative Commons Attribution-NonCommercial-ShareAlike 3.0 Unported License.

This is a preliminary assessment and has not yet been validated in the field. Please send feedback to UNITAR/UNOSAT at the contact information below.

UNOSAT Contact:

E-mail: unosat@unitar.org

T: +41 22 767 4020 (UNOSAT Operations)

T: +41 22 767 4137 (UNOSAT Management)

F: +41 22 766 9145

24/7 hotline: +41 76 487 4998



unitar

United Nations Institute for Training and Research

UNOSAT

Post address

UNOSAT / UNITAR

Palais des Nations

CH-1211 Geneva 10

Switzerland

Visiting address

UNOSAT / UNITAR

International Environment House

Chemin des Anémones 11-13

CH-1219 Châtelaine, Geneva - Switzerland

Send us GEO-PICTURES from disasters worldwide. Scan QR code or download free UN-ASIGN APP here:



<http://download.ansur.no/assign-un.apk>



<https://itunes.apple.com/app/un-assign/id507125097?mt=8>