

DAMAGE ASSESSMENT OF HAMA, HAMA GOVERNORATE, SYRIA

Analysis with Pleiades Data Acquired 05 March 2014, WorldView-2 Data Acquired 26 September 2013, and GeoEye-1 Data Acquired 06 August 2010

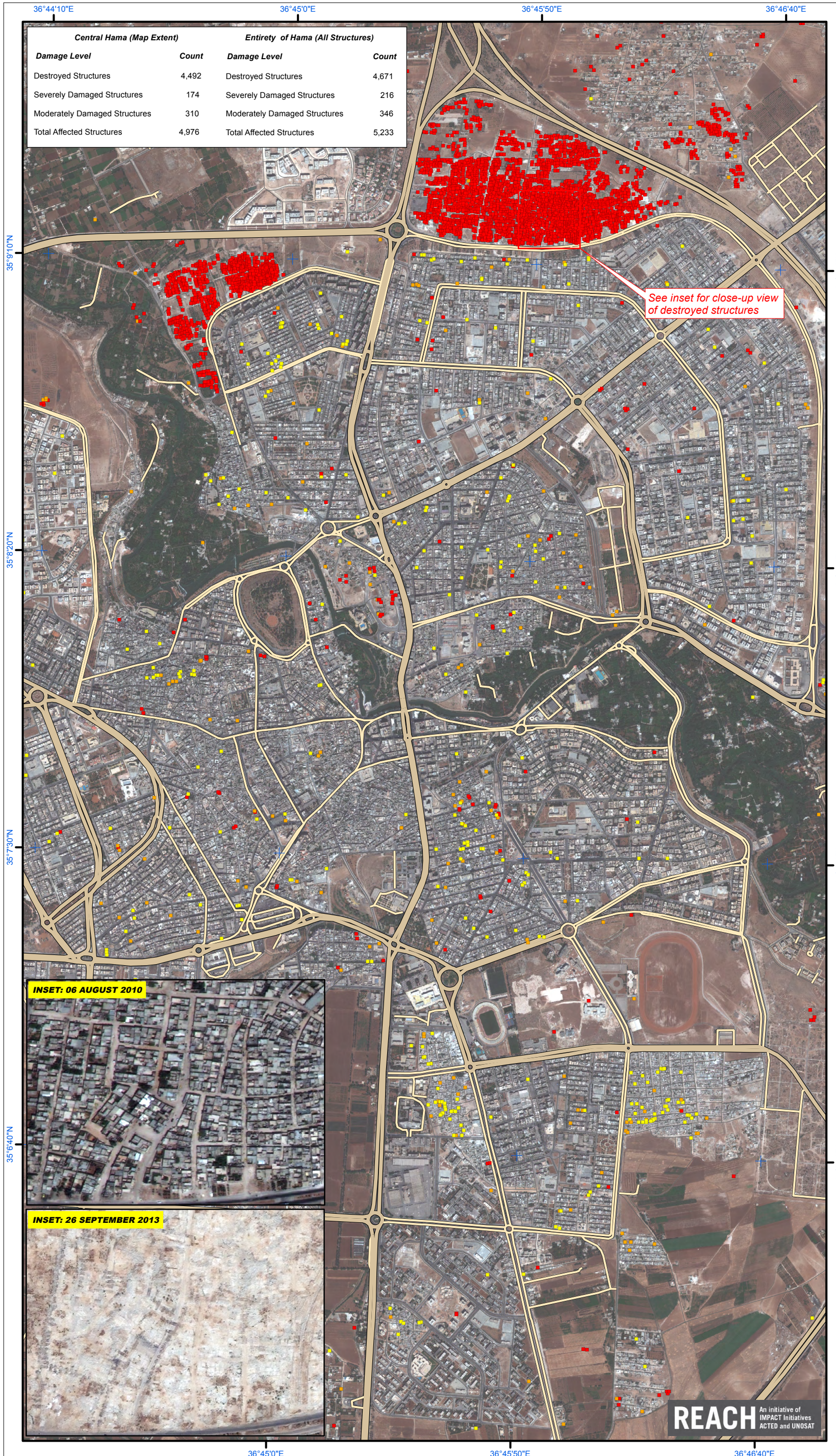
**Complex
Emergency**

Production Date:
11/6/2014

Version 1.0



Glide Number:
CE20130604SYR



This map illustrates satellite-detected damage and destruction in a portion of the city of Hama, Hama Governorate, Syria. Using satellite imagery acquired 05 March 2014, 26 September 2013, and 06 August 2010, UNITAR / UNOSAT identified a total of 4,976 affected structures within the area of this map. Approximately 4,492 of these were destroyed, 174 severely damaged, and 310 moderately damaged. The city-wide analysis of Hama revealed a total of 5,233 affected structures, of which 4,671 were destroyed, 216 severely damaged, and 346 moderately damaged. While most of the city was damaged by 26 September 2013, 308 structures were newly damaged and 6 structures experienced an increase in damage between that date and 05 March 2014. This analysis was done of the REACH initiative for the U.S. Office of Foreign Disaster Assistance. This is a preliminary analysis and has not yet been validated in the field. Please send ground feedback to UNITAR / UNOSAT.

LEGEND

- Destroyed Structure
- Severely Damaged Structure
- Moderately Damaged Structure
- Highway / Primary Road
- Secondary Road
- Local / Urban Road

Map Scale for A3: 1:20,000

 Meters

Satellite Data (1): Pleiades
 Imagery Date: 05 March 2014
 Resolution: 50 cm
 Copyright: CNES 2014, Distribution Airbus Defense and Space
 Source: Airbus Defense and Space
 Satellite Data (2): WorldView-2
 Imagery Date: 26 September 2013
 Resolution: 50 cm
 Copyright: DigitalGlobe
 Source: European Space Imaging
 Satellite Data (3): GeoEye-1
 Imagery Date: 06 August 2010
 Resolution: 50 cm
 Copyright: DigitalGlobe
 Source: European Space Imaging
 Road Data : Google Map Maker / OSM / ESRI
 Other Data: USGS, UNCS, NASA, NGA
 Analysis : UNITAR / UNOSAT
 Production: UNITAR / UNOSAT
 Analysis conducted with ArcGIS v10.2

Coordinate System: WGS 1984 UTM Zone 37N
 Projection: Transverse Mercator
 Datum: WGS 1984
 Units: Meter

The depiction and use of boundaries, geographic names and related data shown here are not warranted to be error-free nor do they imply official endorsement or acceptance by the United Nations. UNOSAT is a program of the United Nations Institute for Training and Research (UNITAR), providing satellite imagery and related geographic information, research and analysis to UN humanitarian and development agencies and their implementing partners.

This work by UNITAR/UNOSAT is licensed under a Creative Commons Attribution-NonCommercial-ShareAlike 3.0 Unported License.

UNITAR
United Nations Institute for Training and Research

UNOSAT

Contact Information: unosat@unitar.org
 24/7 Hotline: +41 76 487 4998
www.unitar.org/unosat

REACH An Initiative of IMPACT Initiatives ACTED and UNOSAT