

DAMAGE ASSESSMENT IN MARCOUNDA SUB-PREFECTURE, CENTRAL AFRICAN REPUBLIC

Analysis with WorldView-2 Data Acquired 21 June and 23 June 2014

This map illustrates locations of destroyed structures in the area of Marcounda Sub-Prefecture in the Central African Republic. Using satellite imagery acquired 21 June and 23 June 2014, UNOSAT is reviewing Marcounda to locate obvious signs of destroyed structures. In portions of Marcounda already assessed, an estimated 2,370

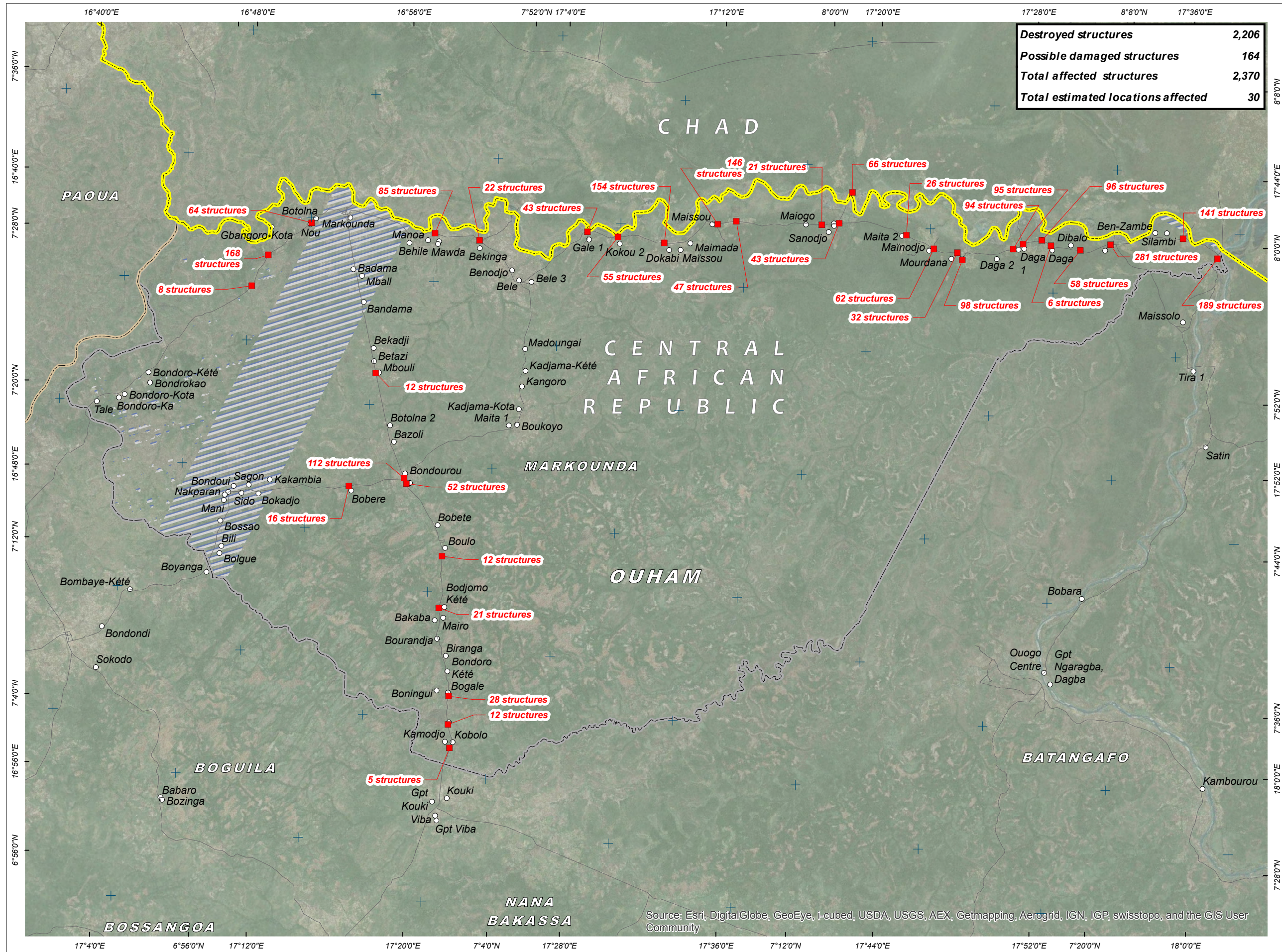
damaged structures were visible across 30 distinct locations. Destruction in many cases was likely due to arson based on appearance of structural remains. Some areas are not yet assessed. This is a preliminary analysis and has not yet been validated in the field. Please send ground feedback to UNITAR / UNOSAT.

Complex Emergency

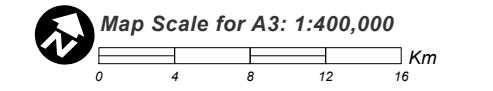
Production Date: 08/07/2014

Version 1.0

Activation Number: CE20131212CAF



- LEGEND**
- Damaged Area
 - Town/Village
 - Road / Track
 - Marcounda Boundary / Analysis Extent
 - Prefecture Boundary
 - International Boundary
 - ▨ Unassessed



Satellite Data(1): WorldView-2
 Imagery Date(1): 23 June 2014
 Satellite Data(2): WorldView-2
 Imagery Date(2): 21 June 2014
 Resolution: 50 cm
 Copyright: DigitalGlobe, Inc.
 Source: US Department of State, Humanitarian Information Unit, NextView License

Road Data : OSM (via bbbike.org)
 Settlements: COD PCodes
 Other Data: USGS, UNCS, NASA, NGA
 Analysis : UNITAR / UNOSAT
 Production : UNITAR / UNOSAT
 Analysis conducted with ArcGIS v10.2

Coordinate System: WGS 1984 UTM Zone 33N
 Projection: Transverse Mercator
 Datum: WGS 1984
 Units: Meter

The depiction and use of boundaries, geographic names and related data shown here are not warranted to be error-free nor do they imply official endorsement or acceptance by the United Nations. UNOSAT is a program of the United Nations Institute for Training and Research (UNITAR), providing satellite imagery and related geographic information, research and analysis to UN humanitarian and development agencies and their implementing partners.

This work by UNITAR/UNOSAT is licensed under a Creative Commons Attribution-NonCommercial-ShareAlike 3.0 Unported License.



UNOSAT

Contact Information: unosat@unitar.org
 24/7 Hotline: +41 76 487 4998
www.unitar.org/unosat

Source: Esri, DigitalGlobe, GeoEye, i-cubed, USDA, USGS, AEX, Getmapping, Aerogrid, IGN, IGP, swisstopo, and the GIS User Community