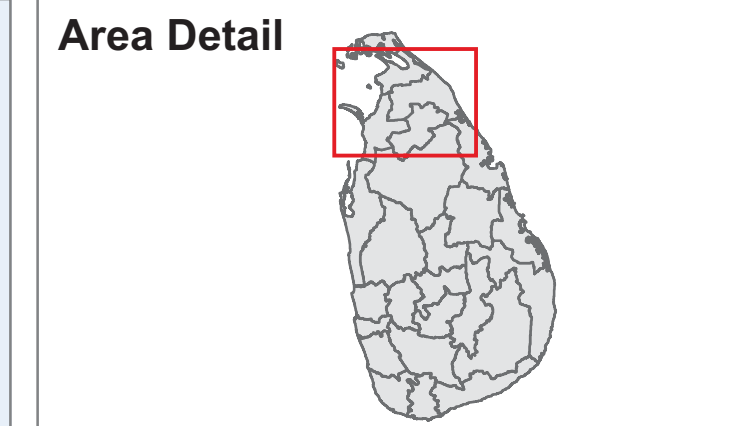
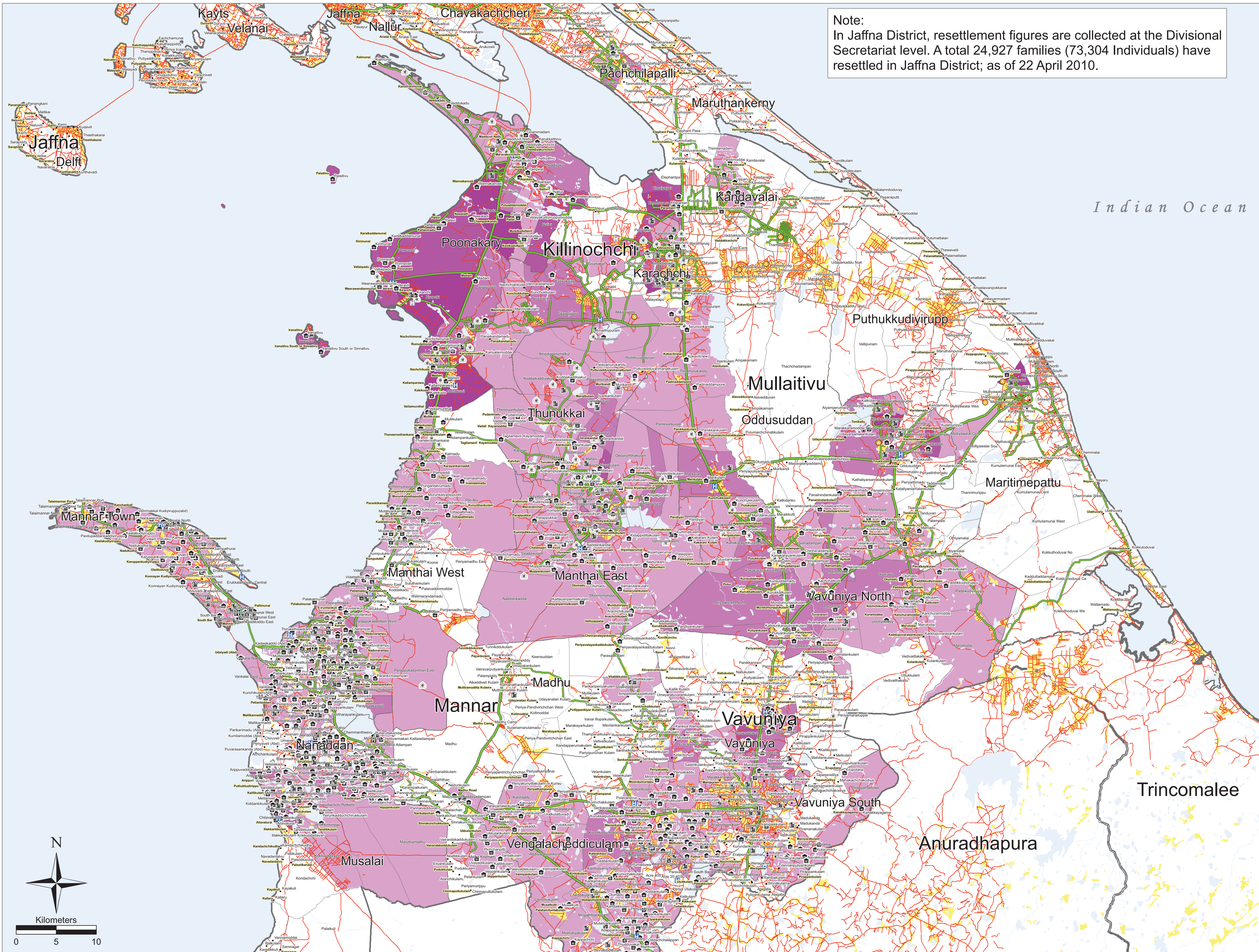


Resettlement Progress including Reopened Schools, MPCs, Transit Centres, UNDSS Approved Roads and Health Facilities

Province: Northern

as of 23 April 2010



- Legend**
- Village Points
 - GN Division Boundary
 - Residential Area
 - Tanks / Water hole
 - MPCs
 - Reopened School
 - Temple
 - Church
 - Resettlement Point
 - Transit Centre
 - Base Hospital Type B
 - District Hospital
 - Divisional Hospital
 - Health Center
 - MOH office
 - Main Road
 - Minor Road
 - Track Road
 - UNDSS Approved Road

- Status of ongoing Resettlement as of 22 April 2010**
- 1 - 500 People
 - 501 - 1,000 People
 - 1,001 - 1,500 People
 - Above 1,500 People

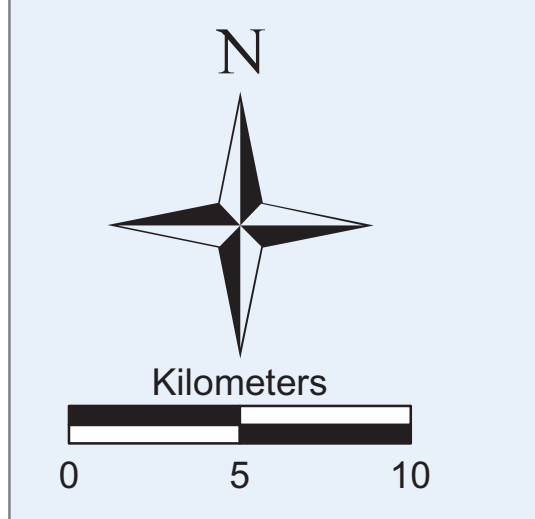
Data source(s):
 Resettlement Data : GA Vavuniya, GA Killinochchi, GA Mullaitivu, GA Mannar

Locations Data : UNDP Mine Action Vavuniya, UNDP Mine Action Jaffna, UNHCR Vavuniya, IOM Vavuniya, UNDSS Vavuniya

Updated as at:	26-Apr-2010
Produced on:	26-Apr-2010
Projection / Datum	Transverse Mercator
Admin boundaries provided by:	Survey Department, Government of Sri Lanka
MapNumber:	OCHALK/Vav/Resettlement/01/V4

This map is designed for printing on A1 size. The boundaries, names and the designations used on this map do not imply official endorsement or acceptance by the United Nations.

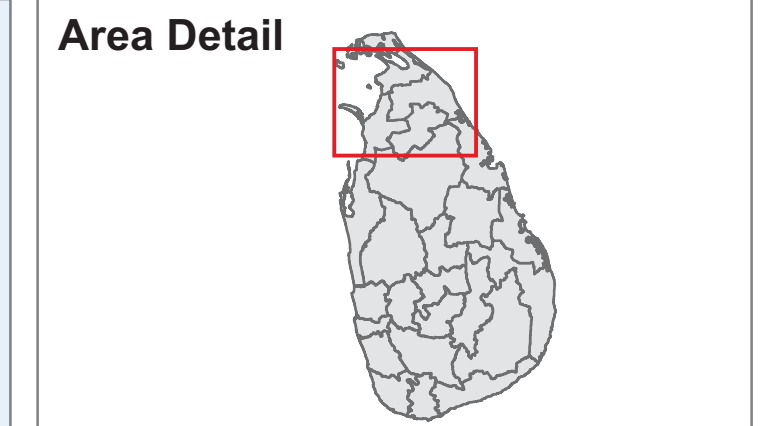
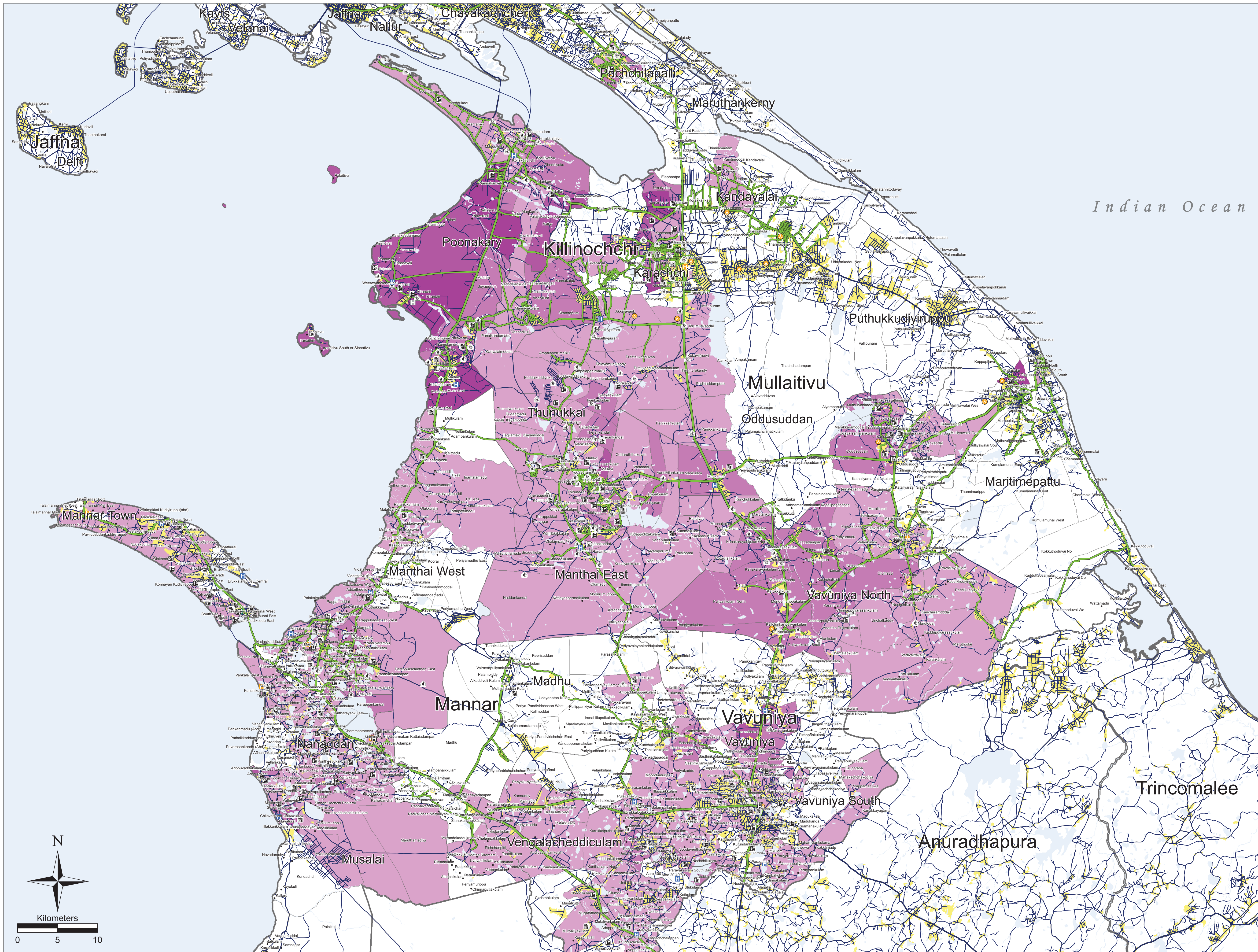
© 2010 United Nations Office for the Coordination of Humanitarian Affairs, Sri Lanka # 20, Temple Road, Kurumankadu Vavuniya. Tel: +94 (24) 2224873, 4922044, 4924742. Fax: +94 (24) 4924742. Email: ocha.vavuniya@gmail.com. Websites: www.hpsl.lk, http://ochaonline.un.org/sri/lan/ Produced through the generous support of:



Resettlement Progress including Reopened Schools, MPCs, Transit Centres, Main Access Road and Health Facilities

Province: Northern

as of 06 May 2010



Legend

- Village Points
- GN Division Boundary
- Residential Area
- Tanks / Water hole
- MPCS
- Reopened School
- Temple
- Church
- Transit Centre
- Base Hospital Type B
- District Hospital
- Divisional Hospital
- Health Center
- MOH office
- Main Road
- Minor Road
- Track Road
- Main Access Road

Status of ongoing Resettlement as of 06 May 2010

- 1 - 500 People
- 501 - 1,000 People
- 1,001 - 1,500 People
- Above 1,500 People

Data source(s):

Resettlement Data : GA Vavuniya, GA Killinochchi, GA Mullaitivu, GA Mannar

Locations Data : UNDP Mine Action Vavuniya, UNDP Mine Action Jaffna, UNHCR Vavuniya, IOM Vavuniya, UNDSS Vavuniya

Updated as at:	12-May-2010
Produced on:	12-May-2010
Projection / Datum	Transverse Mercator
Admin boundaries provided by:	Survey Department, Government of Sri Lanka
MapNumber:	OCH/LK/Vav/Resettlement/01/V5

This map is designed for printing on A1 size. The boundaries, names and the designations used on this map do not imply official endorsement or acceptance by the United Nations.

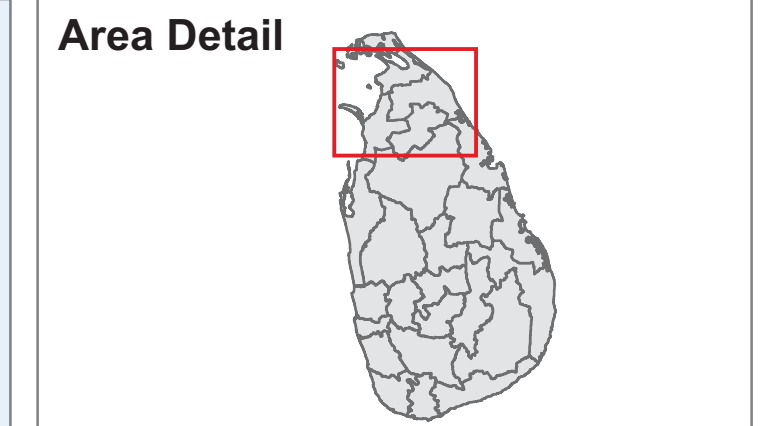
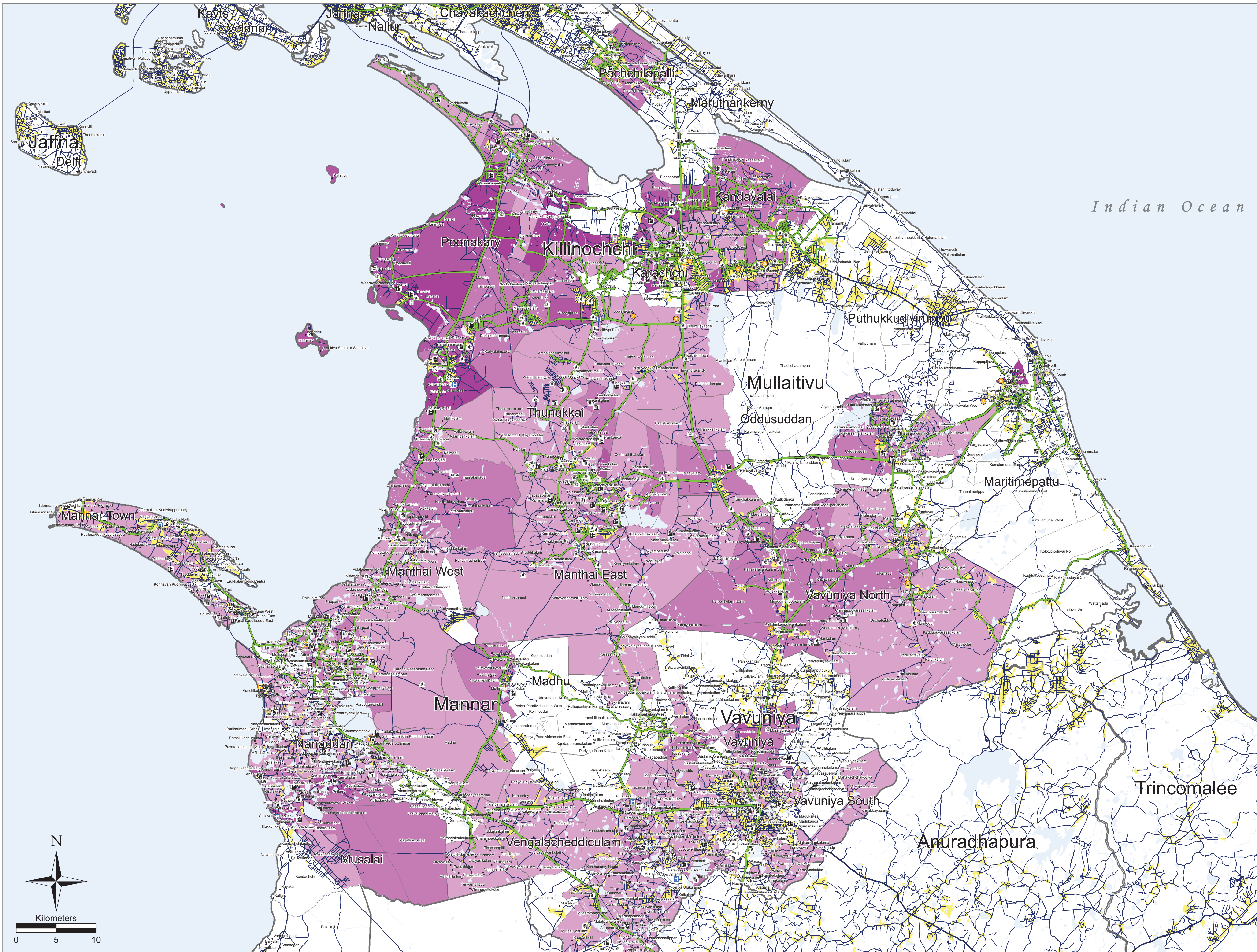
© 2010 United Nations Office for the Coordination of Humanitarian Affairs, Sri Lanka # 20, Temple Road, Kurumankadu Vavuniya. Tel: +94 (24) 2224873, 4922044, 4924742. Fax: +94 (24) 4924742. Email: ocha.vavuniya@gmail.com. Websites: www.hpsl.lk, http://ochaonline.un.org/srilanka

Produced through the generous support of:

Resettlement Progress including Reopened Schools, MPCs, Transit Centres, Main Access Road and Health Facilities

Province: Northern

as of 20 May 2010



- Legend**
- Village Points
 - GN Division Boundary
 - Residential Area
 - Tanks / Water hole
 - MPCS
 - Reopened School
 - Temple
 - Church
 - Transit Centre
 - Base Hospital Type B
 - District Hospital
 - Divisional Hospital
 - Health Center
 - MOH office
 - Main Road
 - Minor Road
 - Track Road
 - Main Access Road

- Status of ongoing Resettlement as of 20 May 2010**
- 1 - 500 People
 - 501 - 1,000 People
 - 1,001 - 1,500 People
 - Above 1,500 People

Data source(s):
Resettlement Data : GA Vavuniya, GA Killinochchi, GA Mullaitivu, GA Mannar
Locations Data : UNDP Mine Action Vavuniya, UNDP Mine Action Jaffna, UNHCR Vavuniya, IOM Vavuniya, UNDSS Vavuniya

Updated as at:	20-May-2010
Produced on:	02-Jun-2010
Projection / Datum	Transverse Mercator
Admin boundaries provided by:	Survey Department, Government of Sri Lanka
MapNumber:	OCH/LK/Vav/Resettlement/01/V7

This map is designed for printing on A1 size. The boundaries, names and the designations used on this map do not imply official endorsement or acceptance by the United Nations.

© 2010 United Nations Office for the Coordination of Humanitarian Affairs, Sri Lanka # 20, Temple Road, Kurumankadu Vavuniya. Tel: +94 (24) 2224873, 4922044, 4924742. Fax: +94 (24) 4924742. Email: ocha.vavuniya@gmail.com. Websites: www.hpsl.lk, http://ochaonline.un.org/srilanka

Produced through the generous support of:

