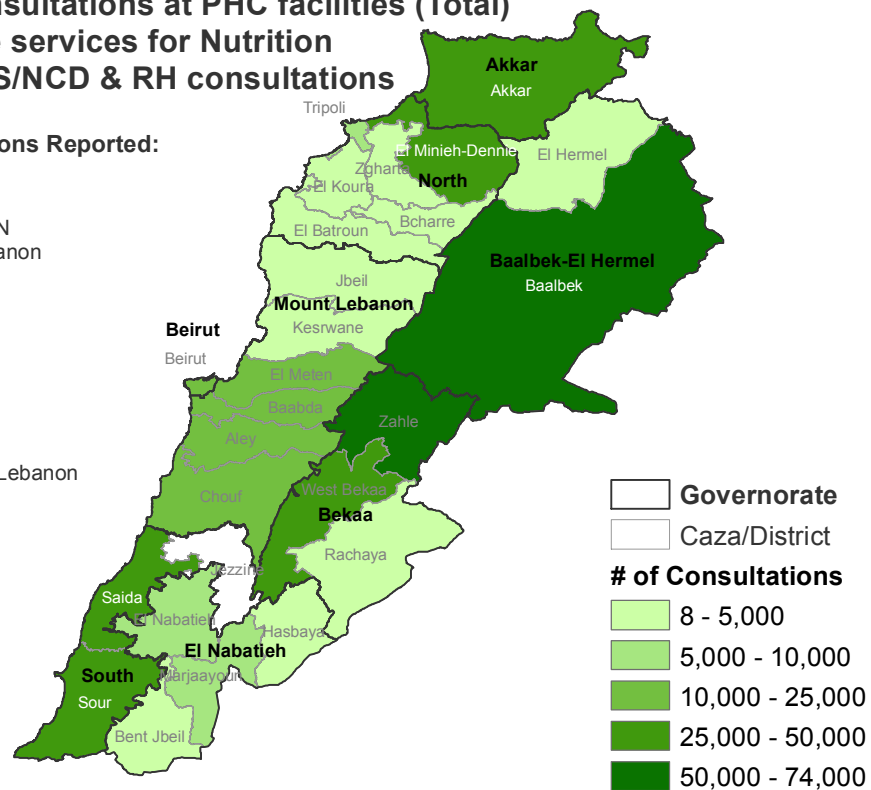




**# of consultations at PHC facilities (Total)
include services for Nutrition
/MH/PSS/NCD & RH consultations**

Organizations Reported:

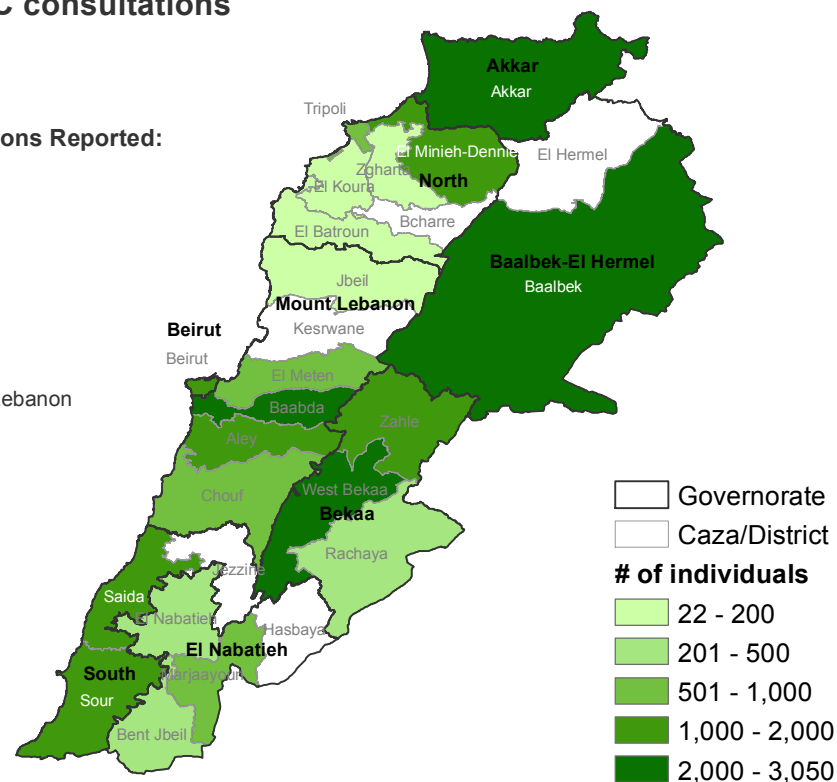
- AMEL
- Beyond
- CCP JAPAN
- CLMC Lebanon
- HI
- Humedica
- IMC
- IOM
- Makassed
- MAP-UK
- MEDAIR
- PU-AMI
- RESTART Lebanon
- RI
- UNRWA
- URDA



of ANC consultations

Organizations Reported:

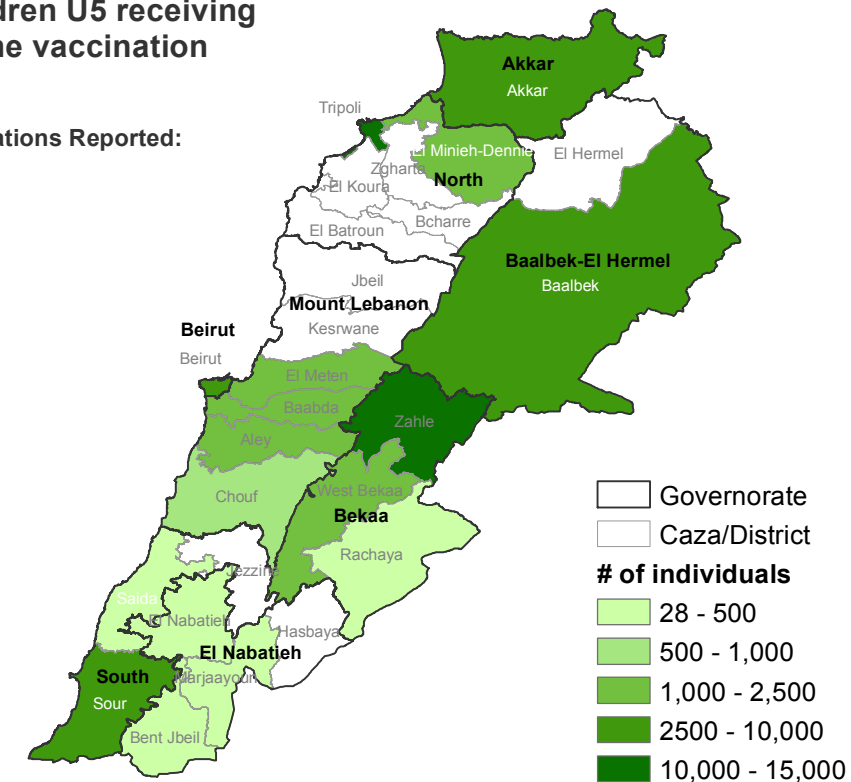
- AMEL
- Beyond
- HI
- IMC
- IOM
- Makassed
- MAP-UK
- MEDAIR
- PU-AMI
- RESTART Lebanon
- RI
- URDA



**# children U5 receiving
routine vaccination**

Organizations Reported:

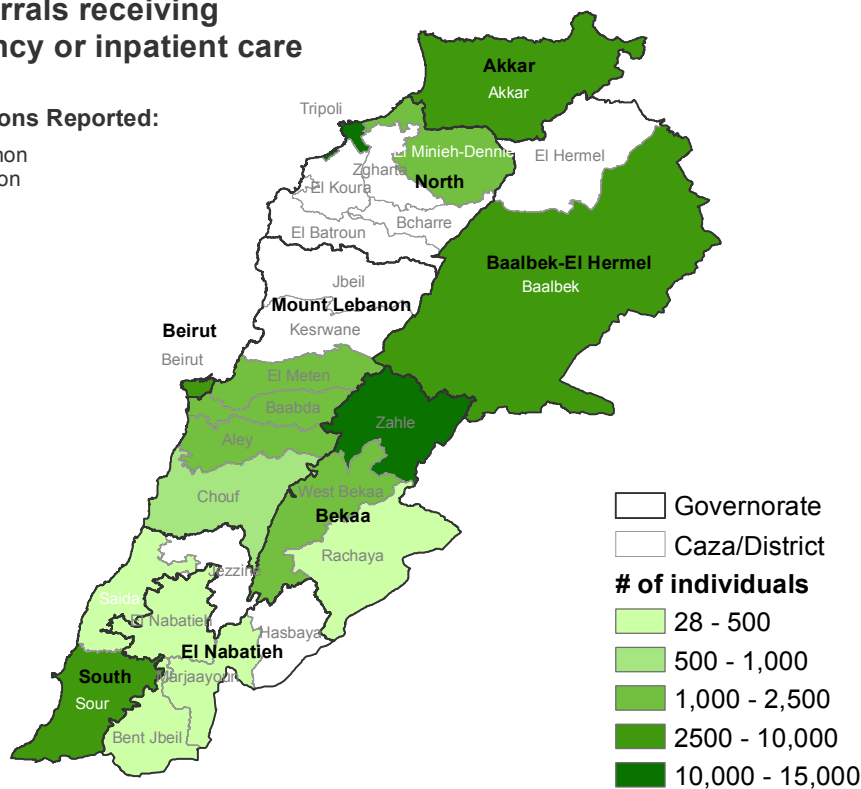
- AMEL
- Beyond
- IMC
- IOM
- Makassed
- MEDAIR
- PU-AMI
- RI
- UNHCR
- URDA



**# of referrals receiving
emergency or inpatient care**

Organizations Reported:

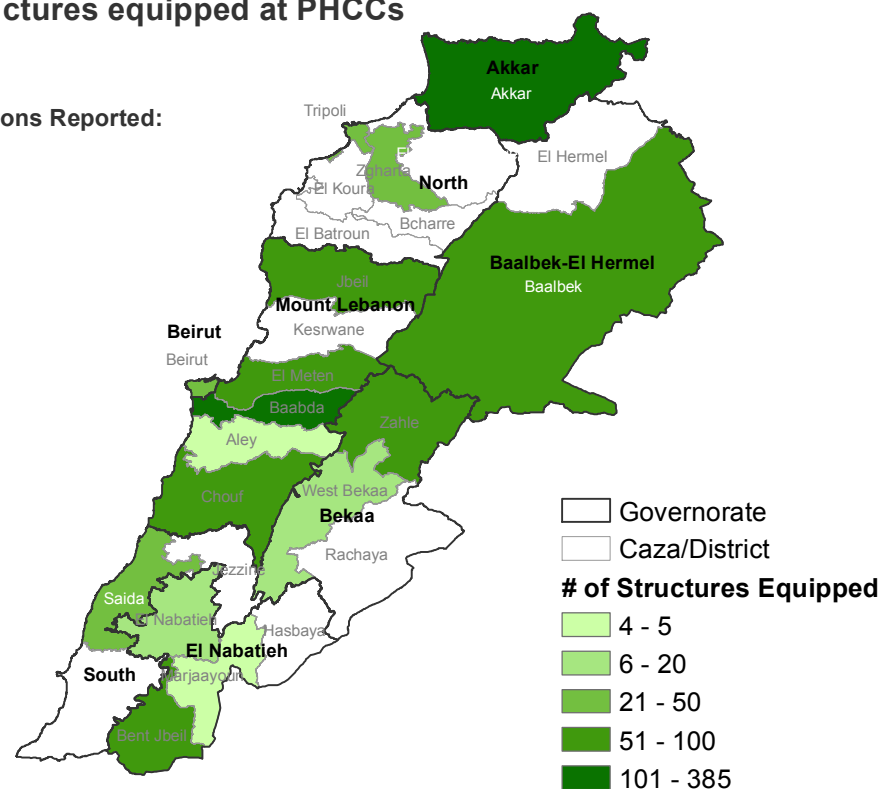
- CLMC Lebanon
- IOCC Lebanon
- PU-AMI
- UNHCR
- URDA



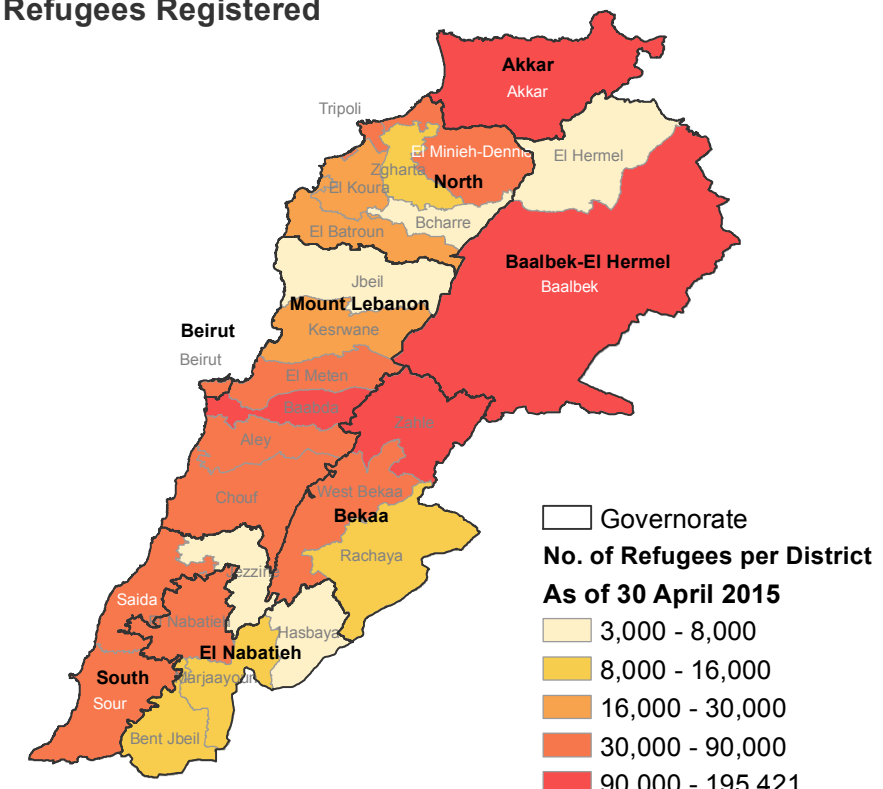
of structures equipped at PHCCs

Organizations Reported:

- ABAAD
- AVSI
- IOM
- Makassed
- MEDAIR
- PU-AMI
- RI
- UNDP
- UNFPA
- URDA



Syrian Refugees Registered



Contact Information:

For information about Public Health Sector, please contact:
Michael Woodman at woodman@unhcr.org
or if you have any inquiry about the map, please contact:
Maroun Sader at sader@unhcr.org

Disclaimer:

The boundaries and names shown on this map do not imply official endorsement or acceptance by the United Nations.. It does not constitute an official United Nations map. The designations employed and the presentation of material on this map do not imply the expression of any opinion whatsoever on the part of the Secretariat of the United Nations concerning the legal status of any country, territory, city or area or of its authorities, or concerning the delimitation of its frontiers or boundaries.

SOURCE: data reported by partners through ActivityInfo in 2015

Reporting Partners:

ABAAD,ACF,AMEL,AVSI,Beyond,CCP JAPAN, CONCERN,CLMC Lebanon,HI,Humedica,IMC, IOCC Lebanon,IOM,Makassed,MAP-UK,MDM, MOPH,PU-AMI,RI,UNHCR,UNRWA,WHO, RESTARTLebanon,UNDP,LFPAD,E,MEDAIR, Solidarités, UNFPA, URDA

