

UPDATE: AL ZAATARI REFUGEE CAMP, MAFRAQ GOVERNORATE, JORDAN

Analysis with WorldView-2 Data Acquired 7 January 2014 and WorldView-1 Data Acquired 30 September 2013

This map illustrates satellite-detected shelters and other buildings at the Al Zaatari refugee camp in Mafraq Governorate, Jordan. As of 7 January 2014 a total of 28,093 shelters were detected as well as 1,735 infrastructure and support buildings within the 531.8 hectares of the camp. Between 30 September 2013 and 7 January 2014, a total of 4,982 shelters closed or were moved, and a total of 6,868 shelters were constructed, and the number of shelters has thus increased by about 2,171 since the previous

UNITAR/UNOSAT assessment. This indicates an approximate 8.4% increase in the number of shelters between 30 September 2013 and 7 January 2014. This is a preliminary analysis and has not yet been validated in the field; structure locations subject to a spatial error margin of +/- three meters. Shelters grouped under plastic sheeting were estimated by average household size and may be a source of error. Please send ground feedback to UNITAR/UNOSAT.

Refugee Camp

Production Date:
03/02/2014

Version 1.0

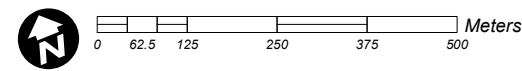
Activation Number:
CE-2013-0604-SYR



LEGEND

- Shelter structure (7 January 2014)
- Shelter structure (30 September 2013)
- Camp infrastructure building
- Total Camp Extent
- District Boundary

Map Scale for A3: 1:10,500



Satellite Data (1): WorldView-2
Imagery Dates: 7 January 2014
Resolution: 50 cm
Copyright: DigitalGlobe
Source: US Department of State, Humanitarian Information Unit, NextView License
Satellite Data (2): WorldView-1
Imagery Dates: 30 September 2013
Resolution: 50 cm
Copyright: DigitalGlobe
Source: European Space Imaging
Analysis: UNITAR / UNOSAT
Production: UNITAR / UNOSAT
Analysis conducted with ArcGIS v10.1

Coordinate System: WGS 1984 UTM Zone 37N
Projection: Transverse Mercator
Datum: WGS 1984
Units: Meter

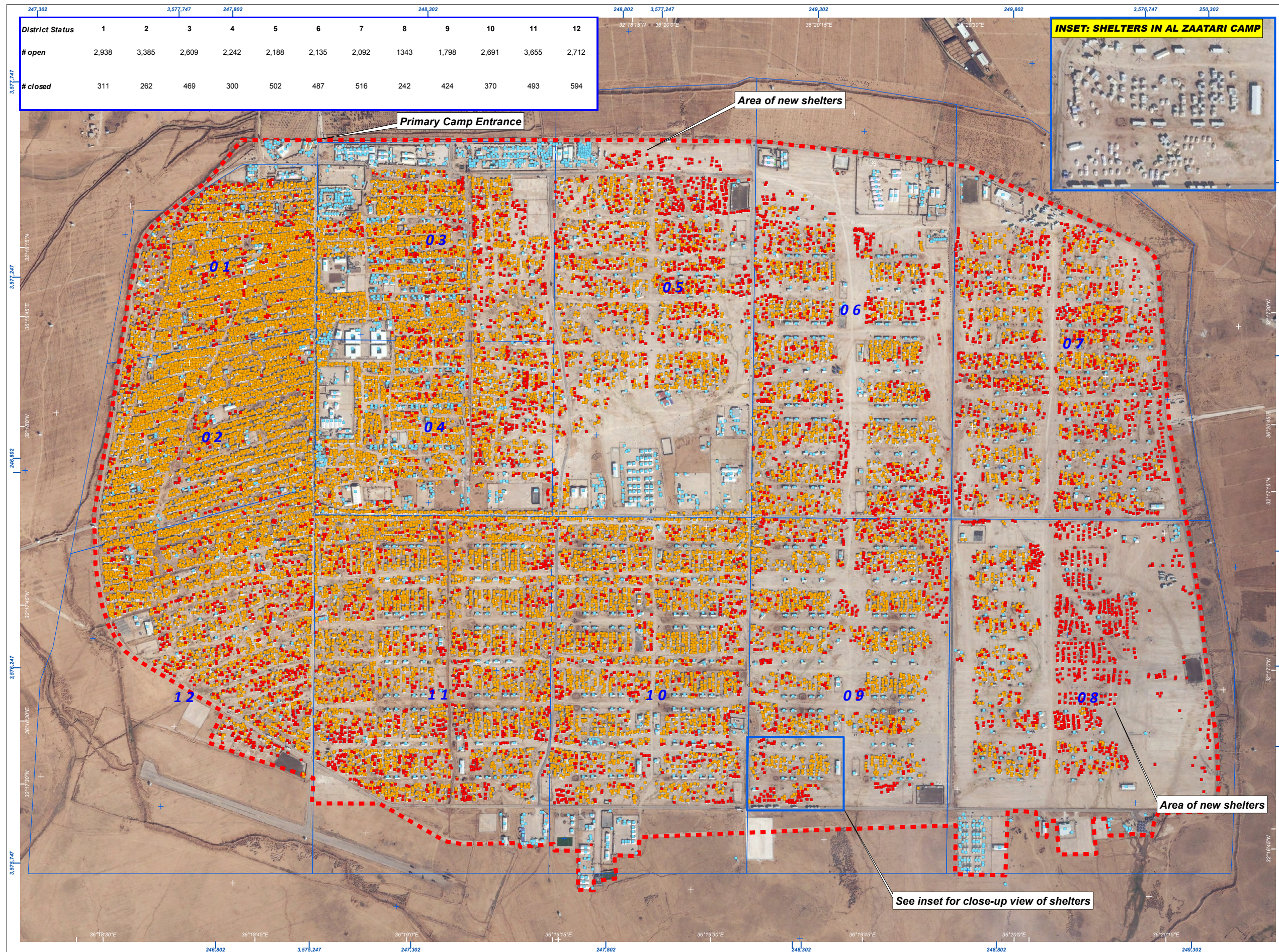
The depiction and use of boundaries, geographic names and related data shown here are not warranted to be error-free nor do they imply official endorsement or acceptance by the United Nations. UNOSAT is a program of the United Nations Institute for Training and Research (UNITAR), providing satellite imagery and related geographic information, research and analysis to UN humanitarian and development agencies and their implementing partners.

This work by UNITAR/UNOSAT is licensed under a Creative Commons Attribution-NonCommercial-



UNOSAT

Contact Information: unosat@unitar.org
24/7 Hotline: +41 76 487 4998
www.unitar.org/unosat



District Status	1	2	3	4	5	6	7	8	9	10	11	12
# open	2,938	3,385	2,609	2,242	2,188	2,135	2,092	1,343	1,798	2,691	3,655	2,712
# closed	311	262	469	300	502	487	516	242	424	370	493	594