

# UPDATE: AL AZRAQ REFUGEE CAMP, AZ ZARQA GOVERNORATE, JORDAN

Analysis with WorldView-1 Data Acquired 11 November 2014 and WorldView-2 Data Acquired 26 April 2014

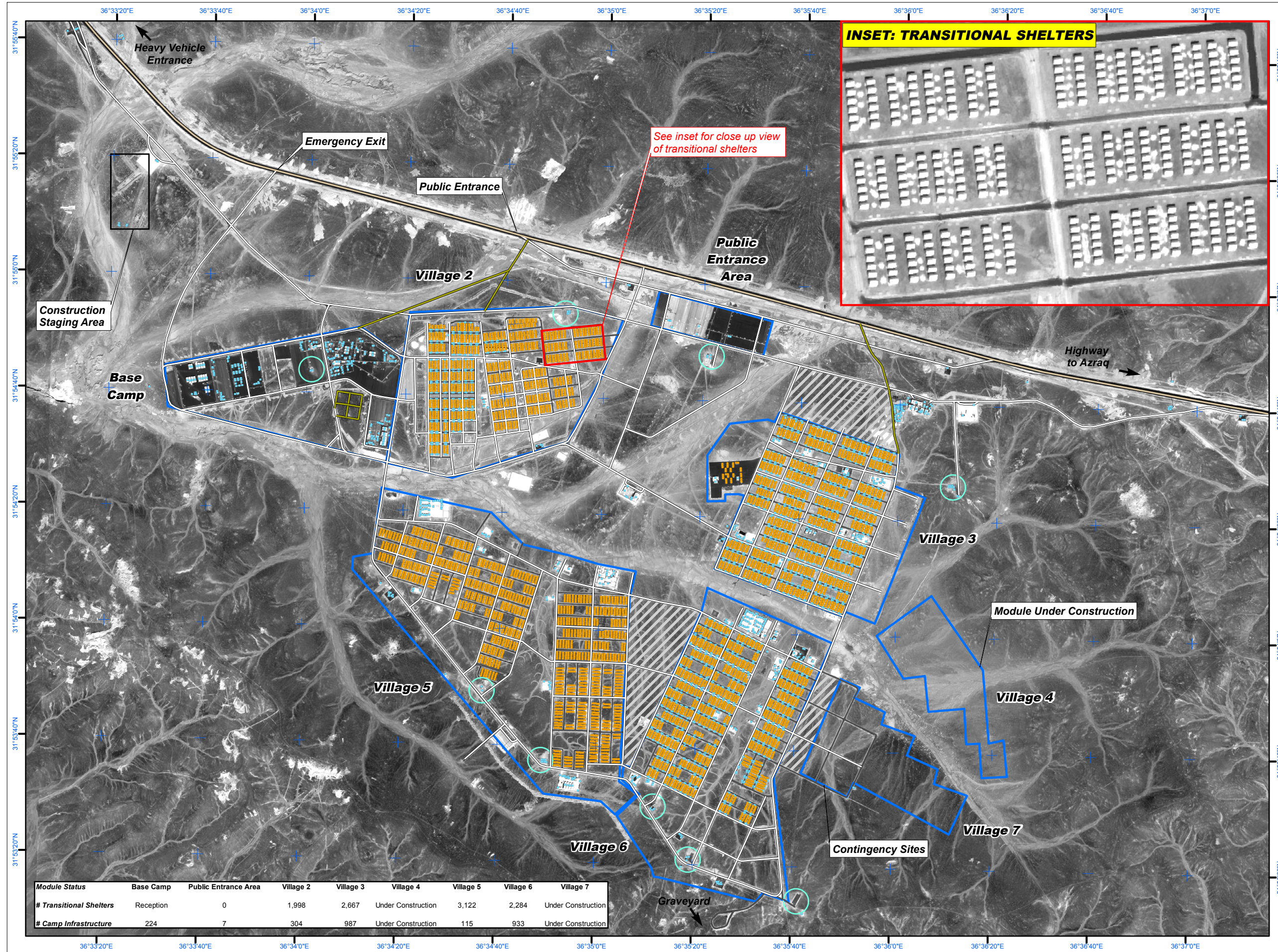
This map illustrates the refugee camp currently under construction in Al Azraq, Jordan. Using an image collected by the WorldView-1 satellite on 11 November 2014 a total of 12,761 structures were detected. This total includes 2,690 infrastructure and support buildings as well as 10,071 transitional shelters. Preparations are continuing so as to accommodate additional incoming refugees. The previous analysis done by UNOSAT using an image from 26 April 2014 detected a total of 7,333 infrastructure, support buildings and transitional shelters. This is an increase of approximately 74%. Paved and unpaved roads have likewise increased significantly and define the transportation network in and around the camp. Water and sanitation services are also under development in multiple camp zones suitable for supporting thousands of proximate shelters. This is a preliminary analysis and has not yet been validated in the field. Please send ground feedback to UNITAR / UNOSAT.

Refugee Camp

Production Date:  
11/28/2014

Version 1.0

Activation Number:  
CE20130604SYR



**LEGEND**

- Transitional Shelter
- Camp Infrastructure Building
- Primary Road
- Secondary Road
- Local / Path
- Removed Road
- Water Storage Site
- Buffer Zone
- Module Boundaries

Map Scale for A3: 1:20,000

Satellite Data (1): WorldView-1  
Imagery Date: 11 November 2014  
Resolution: 50cm  
Copyright: DigitalGlobe, Inc.  
Source: US Department of State, Humanitarian Information Unit, NextView License  
Satellite Data (2): WorldView-2  
Imagery Date: 26 April 2014  
Resolution: 50cm  
Copyright: DigitalGlobe, Inc.  
Source: US Department of State, Humanitarian Information Unit, NextView License  
Road Data: UNOSAT  
Village Boundaries: OSM  
Other Data: USGS, UNCS, NASA, NGA  
Analysis: UNITAR / UNOSAT  
Production: UNITAR / UNOSAT  
Analysis conducted with ArcGIS v10.2

Coordinate System: WGS 1984 UTM Zone 37N  
Projection: Transverse Mercator  
Datum: WGS 1984  
Units: Meter

The depiction and use of boundaries, geographic names and related data shown here are not warranted to be error-free nor do they imply official endorsement or acceptance by the United Nations. UNOSAT is a program of the United Nations Institute for Training and Research (UNITAR), providing satellite imagery and related geographic information, research and analysis to UN humanitarian and development agencies and their implementing partners.

This work by UNITAR/UNOSAT is licensed under a Creative Commons Attribution-NonCommercial-ShareAlike 3.0 Unported License.



**UNOSAT**

Contact Information: [unosat@unitar.org](mailto:unosat@unitar.org)  
24/7 Hotline: +41 76 487 4998  
[www.unitar.org/unosat](http://www.unitar.org/unosat)