

KEY FIGURES¹

1.5 million
number of internally displaced people living in Borno
9.9 per cent increase compared to DTM RXIII

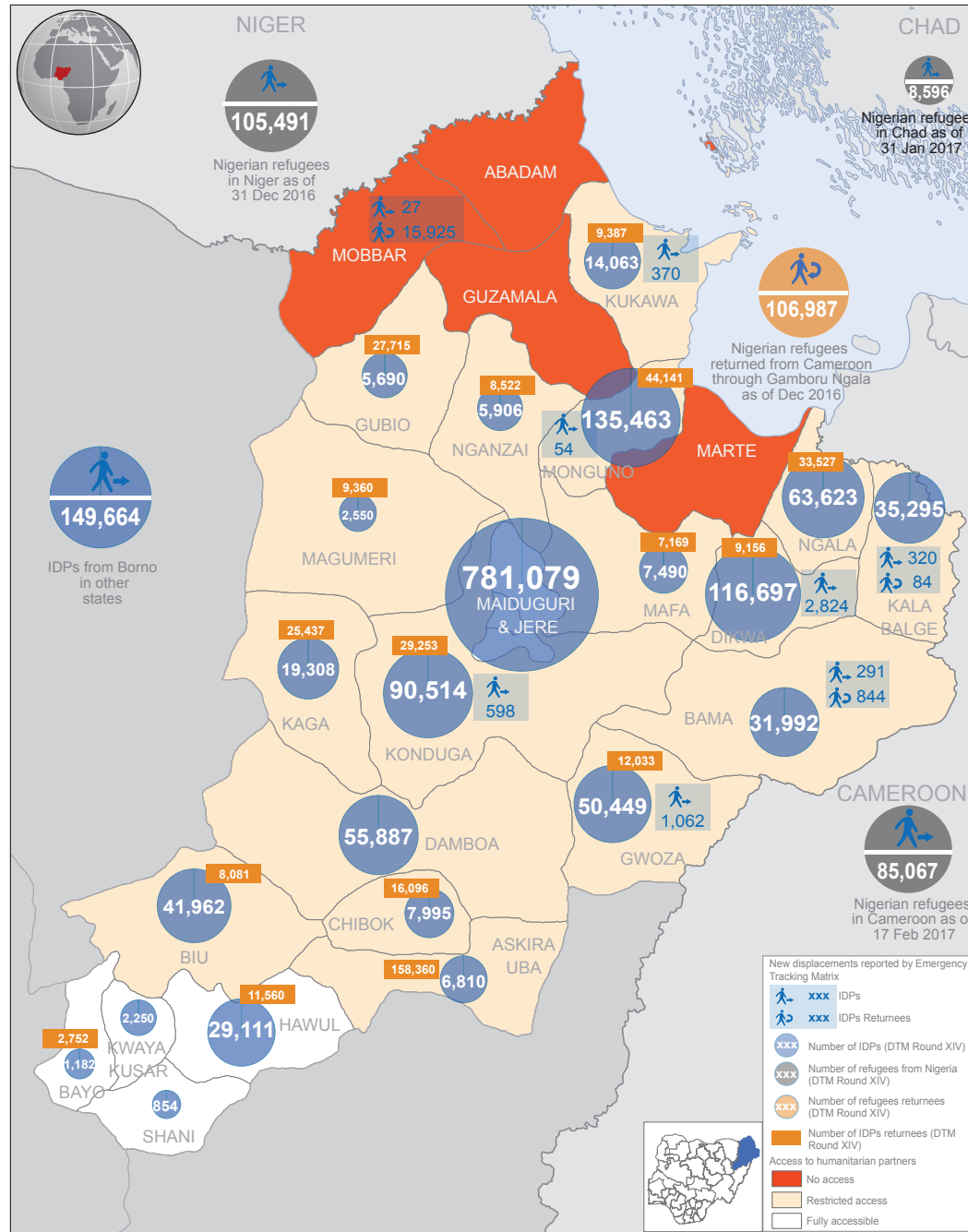
0.4 million
number of people returning to their areas of origin
10.1 per cent increase compared to DTM RXIII

0.1 million
registered refugees who returned through Borno

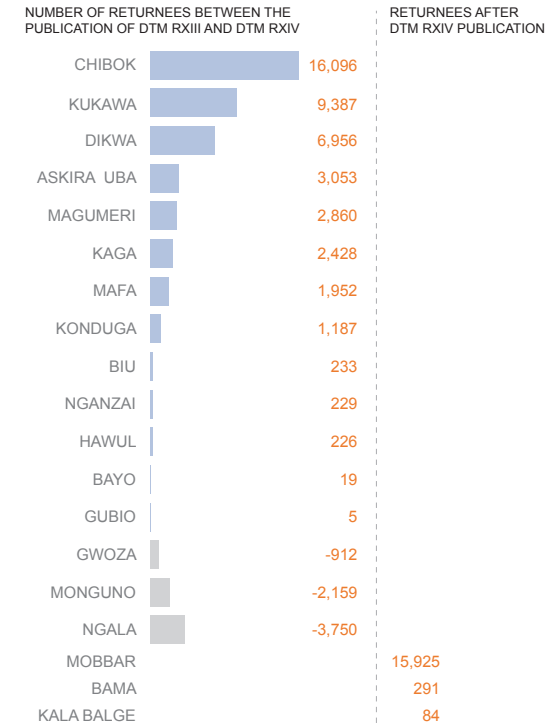
IDPs LOCAL GOVERNMENT AREAS (LGA) OF ORIGIN²

IDPS LGA OF ORIGIN	* TOTAL IDPS FROM LGA	PERCENTAGE OF DISPLACED PEOPLE WITHIN THE LGA
BAMA	235,853	14%
KONDUGA	217,471	9%
MAFA	213,999	4%
KUKAWA	162,255	9%
GWOZA	161,304	31%
DIKWA	146,799	79%
DAMBOA	133,874	42%
MARTE	84,829	0%
NGALA	64,531	99%
MONGUNO	52,333	50%
KAGA	45,462	42%
KALA BALGE	35,295	100%
HAWUL	34,053	83%
MOBBAR	21,833	26%
ASKIRA UBA	6,674	61%
MAIDUGURI	6,155	0%
GUBIO	5,819	98%
ABADAM	3,915	0%
BIU	3,816	54%
NGANZAI	3,510	100%
JERE	3,156	19%
CHIBOK	2,608	0%
MAGUMERI	2,550	100%
GUZAMALA	106	0%

*Based on assessments conducted within the Northeast (Adamawa, Bauchi, Borno, Gombe, Taraba and Yobe). Does not include people displaced outside these states.



PEOPLE RETURNING TO THEIR AREAS OF ORIGIN³



The DTM Round XIV assessment registered for the first time returnees in Chibok, Dikwa and Kukawa. In addition the Emergency Tracking Tool (ETT) shows 15,925 people returning to Mobbar as the security situation is relatively improving. Decrease in number of returnees in some areas was also reported.

CURRENT LOCATION OF IDPs FROM BORNO⁴



The boundaries and names shown and the designations used on this map do not imply official endorsement or acceptance by the United Nations. Developed only for humanitarian activities purposes.

Update on: 07 March 2017 Sources: (1) DTM Round XIV, UNHCR, (2) DTM Round XIV (3) DTM Round XIII & XIV, Emergency Tracking Matrix Week 7 & 8 (4) DTM Round XIV

Feedback: ochanigeria@un.org For more information on Nigeria humanitarian activities: www.humanitarianresponse.info/operations/nigeria http://www.unocha.org/nigeria http://reliefweb.int/country/nga