

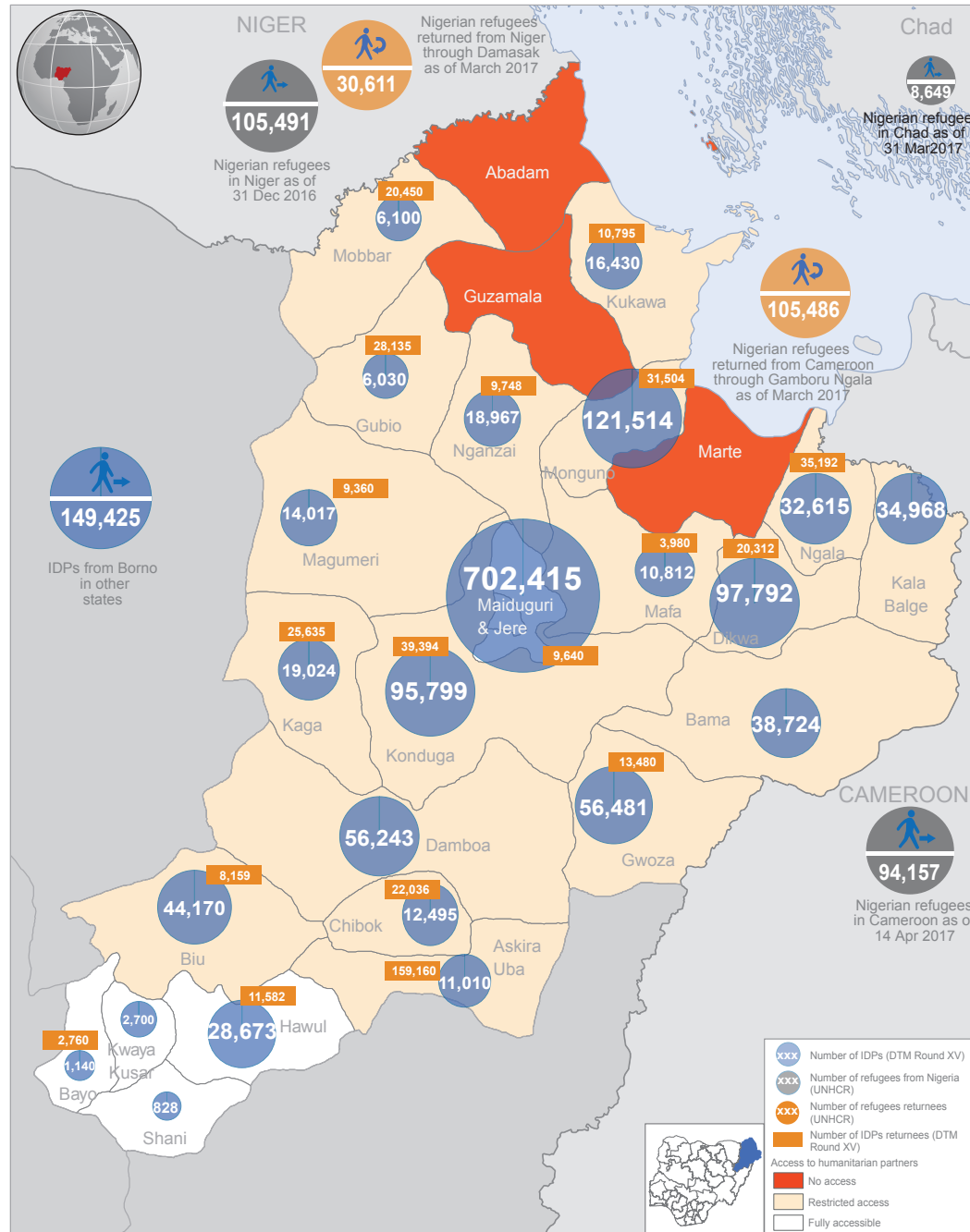
KEY FIGURES¹

1.43 million
number of internally displaced people living in Borno
9.5 per cent decrease compared to DTM RXIV

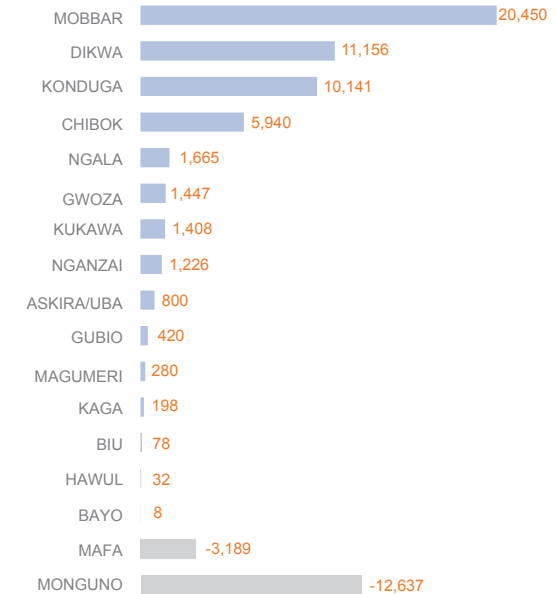
0.45 million
number of people returning to their areas of origin
9.1 per cent increase compared to DTM RXIV

IDPs LOCAL GOVERNMENT AREAS (LGA) OF ORIGIN²

IDPS LGA OF ORIGIN	TOTAL IDPS FROM LGA	PERCENTAGE OF DISPLACED PEOPLE WITHIN THE LGA
BAMA	221,152	18%
GWOZA	220,799	26%
KONDUGA	188,224	16%
MAFA	173,090	6%
MARTE	139,630	0%
KUKAWA	119,520	14%
DAMBOA	117,984	48%
DIKWA	106,572	92%
MONGUNO	84,289	54%
KALA BALGE	34,968	100%
HAWUL	33,639	83%
NGALA	33,327	98%
KAGA	24,163	79%
MOBBAR	15,666	39%
ASKIRA / UBA	13,811	80%
NGANZAI	11,867	54%
MAIDUGURI	6,950	0%
GUBIO	6,159	98%
JERE	5,569	17%
ABADAM	3,638	0%
BIU	3,212	63%
CHIBOK	2,757	62%
MAGUMERI	2,300	100%
GUZAMALA	1,519	0%



NUMBER OF RETURNEES BETWEEN THE PUBLICATION OF DTM RXIV AND DTM RXV³



The DTM Round XV assessment marked an increase of 39,432 IDPs. The largest number of returns was recorded in Mobbar LGA where most of the returnees came from neighboring Niger. Monguno and Mafa LGAs saw a sharp decrease in the number of returnees, where many of the displaced people travelled to their place of origin.

CURRENT LOCATION OF IDPs FROM BORNO⁴



The boundaries and names shown and the designations used on this map do not imply official endorsement or acceptance by the United Nations. Developed only for humanitarian activities purposes.

Update on: 19 April 2017 Sources: (1) DTM Round XV, UNHCR, (2) DTM Round XV (3) DTM Round XIV & XV

Feedback: ochanigeria@un.org For more information on Nigeria humanitarian activities: www.humanitarianresponse.info/operations/nigeria http://www.unocha.org/nigeria http://reliefweb.int/country/nga