

## KEY FIGURES<sup>1</sup>

**117,000**  
number of internally displaced people in Yobe  
3.2 per cent increase compared to DTM RXIV

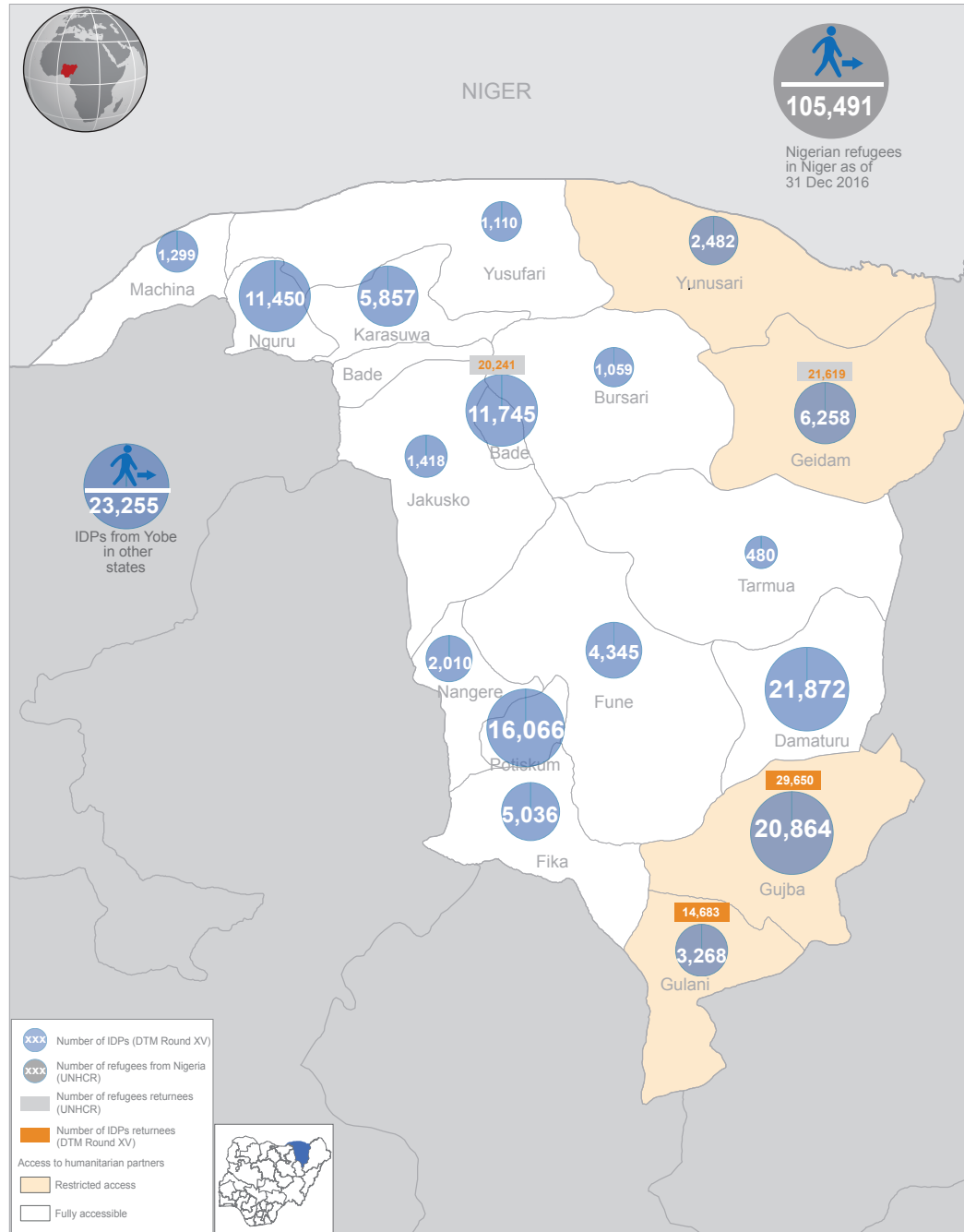
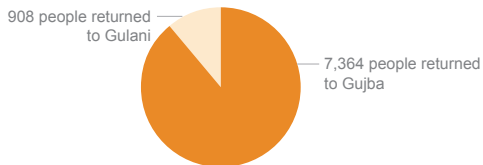
**44,300**  
number of people returning to their areas of origin  
30 per cent increase compared to DTM RXIV

## IDPs LOCAL GOVERNMENT AREAS OF ORIGIN<sup>2</sup>

Majority of the IDPs from Yobe state originate from Gujba and Gulani Local Government Areas (LGA):

IDPs LGA OF ORIGIN	TOTAL IDPS FROM LGA	PERCENTAGE OF DISPLACED PEOPLE WITHIN THE LGA
GUJBA	70,190	30%
GULANI	11,595	28%
GEIDAM	6,542	96%
TARMUA	2,051	0%
YUNUSARI	1,647	0%
POTISKUM	1,338	0%
DAMATURU	986	0%
FIKA	566	0%
NGURU	275	0%
BADE	83	0%

## NUMBER OF RETURNEES BETWEEN THE PUBLICATION OF DTM RXIV AND DTM RXV<sup>3</sup>



## INCREASE/DECREASE OF IDPS COMPARED TO DTM RXIV<sup>4</sup>



Yobe State recorded an overall increase in the number of IDPs, the increase is attributed to return of refugees from neighbouring countries.

## CURRENT LOCATION OF IDPs FROM YOBE<sup>5</sup>



The boundaries and names shown and the designations used on this map do not imply official endorsement or acceptance by the United Nations. Developed only for humanitarian activities purposes.

Update on: 19 April 2017

Sources: (1) DTM Round XIV & XV (2) DTM Round XV (3) DTM Round XIV & XV, (4) DTM Round XIV & XV (5) DTM Round XV

Feedback: ochanigeria@un.org For more information on Nigeria humanitarian activities: www.humanitarianresponse.info/operations/nigeria http://www.unocha.org/nigeria http://reliefweb.int/country/nga