

BASIRMA REFUGEE CAMP, ARBIL GOVERNORATE, IRAQ

Analysis with WorldView-1 Data Acquired 18 June 2014

This map illustrates satellite-detected shelters and other buildings at the Basirma Refugee Camp in Arbil Governorate, Iraq. This camp is 12 kilometres north of Shaqlawa town and as of 18 June 2014, a total of 968 shelters were detected as well as 19 infrastructure and support buildings. New expansion areas are also visible in

the image as of 18 June 2014, indicating preparations are underway to accommodate increased numbers of refugees in the near future. This is a preliminary analysis & has not yet been validated in the field. Please send ground feedback to UNITAR / UNOSAT.

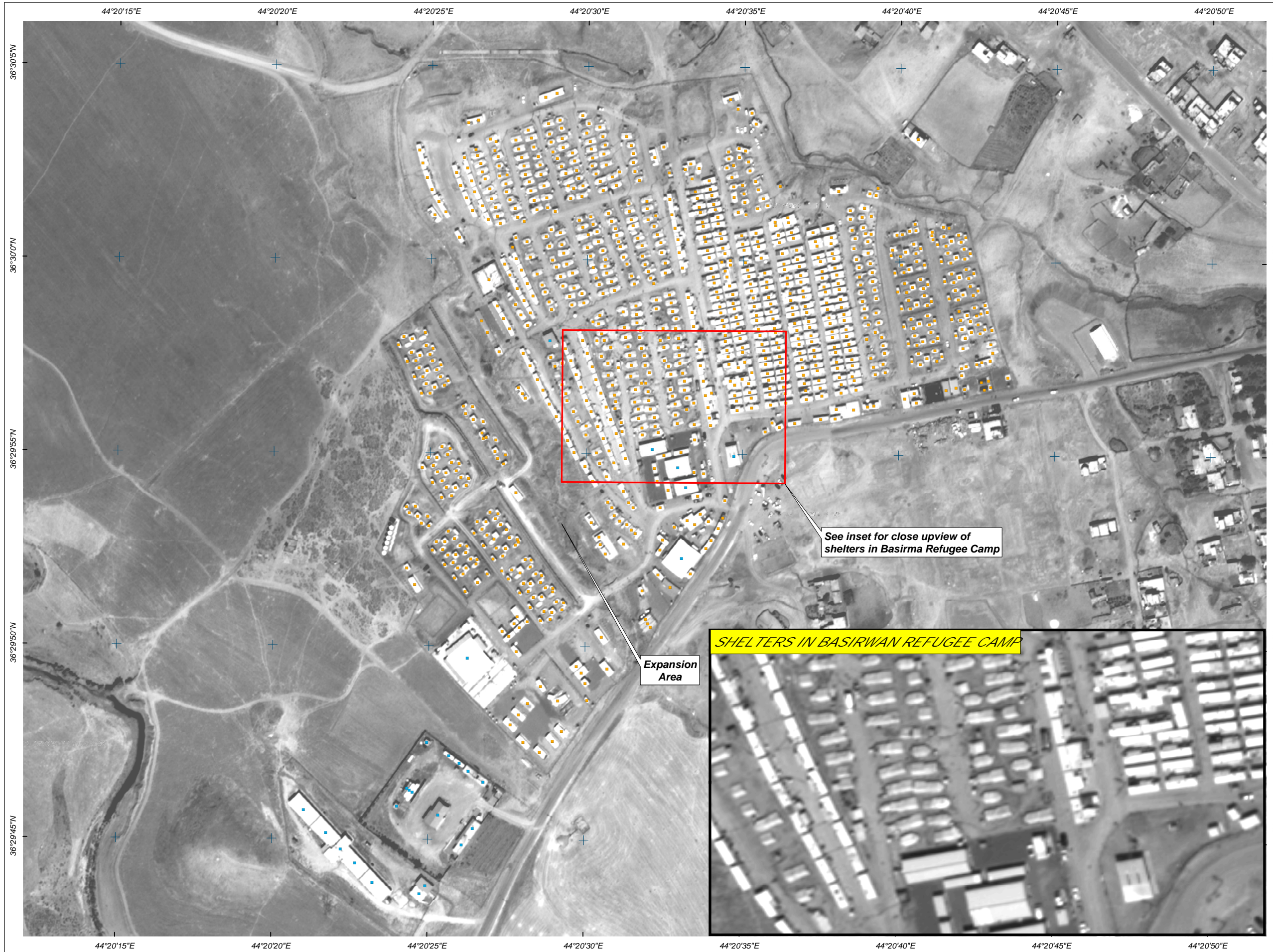
Complex
Emergency



Production Date:
26/06/2014

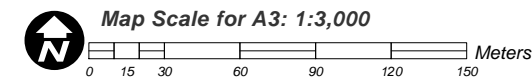
Version 1.0

Activation Number:
CE20140613IRQ



LEGEND

- Tent Shelter Structure
- Administrative Structure



Satellite Data : WorldView-1
 Imagery Dates : 18 June 2014
 Resolution : 50 cm
 Copyright : DigitalGlobe, Inc.
 Source : US Department of State, Humanitarian Information Unit, NextView License

Road Data : UNOSAT
 Other Data : USGS, UNCS, NASA, NGA
 Analysis : UNITAR / UNOSAT
 Production : UNITAR / UNOSAT
 Analysis conducted with ArcGIS v10.1

Coordinate System : WGS 1984 UTM Zone 38N
 Projection : Transverse Mercator
 Datum : WGS 1984
 Units : Meter

The depiction and use of boundaries, geographic names and related data shown here are not warranted to be error-free nor do they imply official endorsement or acceptance by the United Nations. UNOSAT is a program of the United Nations Institute for Training and Research (UNITAR), providing satellite imagery and related geographic information, research and analysis to UN humanitarian and development agencies and their implementing partners.

This work by UNITAR/UNOSAT is licensed under a Creative Commons Attribution-NonCommercial-ShareAlike 3.0 Unported License.



UNOSAT

Contact Information: unosat@unitar.org
 24/7 Hotline: +41 76 487 4998
www.unitar.org/unosat