

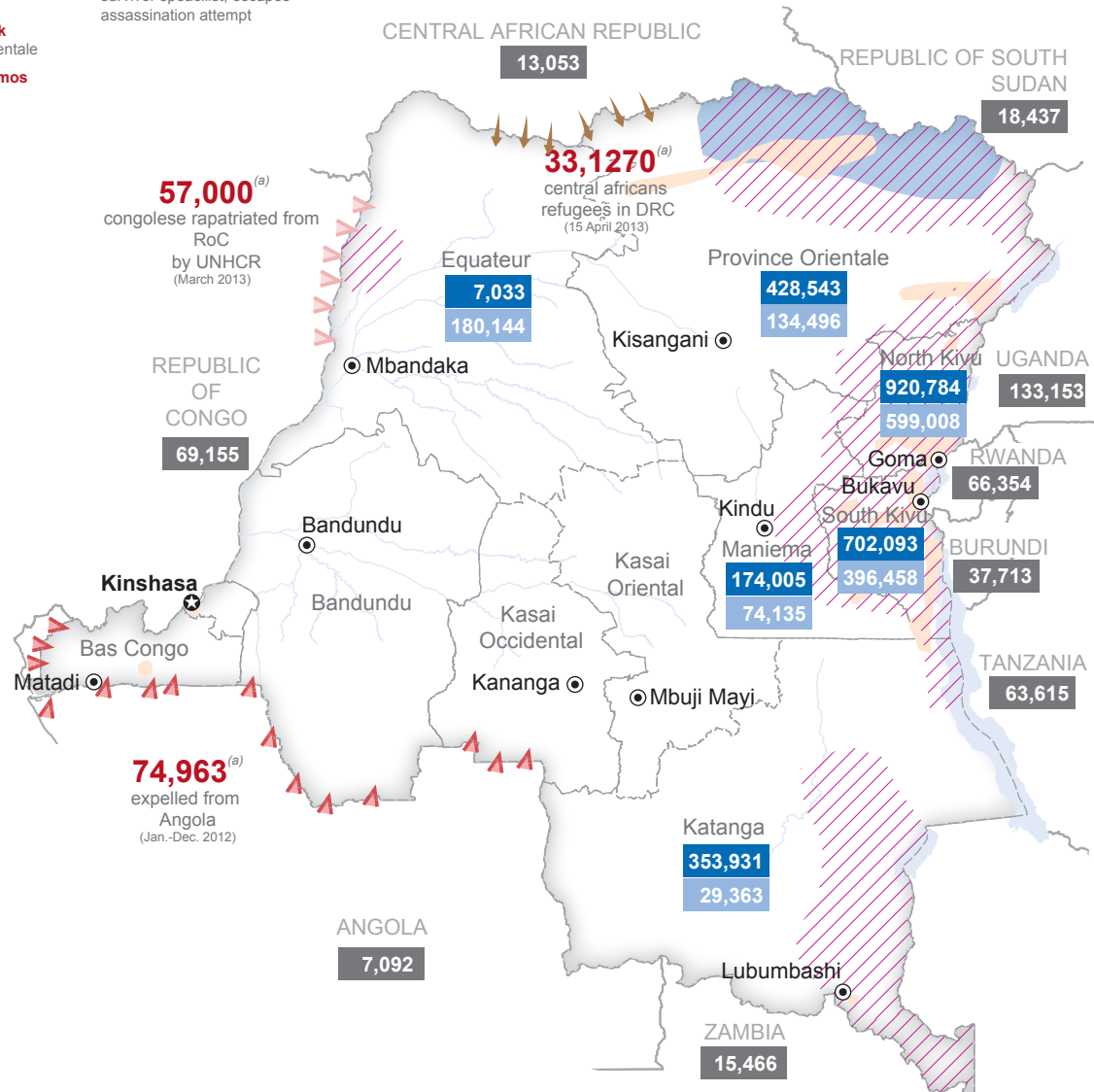
Democratic Republic of Congo : Humanitarian situation (January 2012 - April 2013)



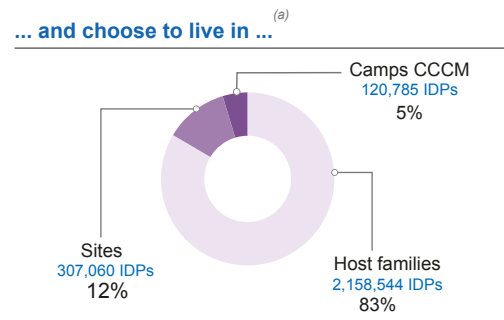
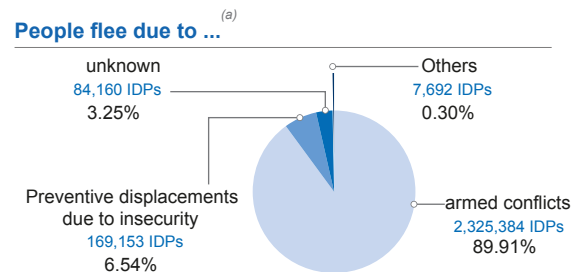
Since 2012 the DRC has witnessed a constant increase in the number of internally displaced people, up from 1.7 million in December 2011 to more than 2.6 million in April 2013. The east of the country has remained very unstable due to the presence of various armed groups and militias. In Katanga, the internally displaced population increased

fivefold and doubled in Maniema. The persistence and resurgence of epidemics further fragilized already vulnerable communities. Throughout the rest of the country, sudden onset and slow onset disasters have caused humanitarian crises, notably due to perennial structural causes and the many development challenges.

- March 2012**
IDP population reaches **2 million**
- April**
Armed group **M-23** appears in North Kivu
- June**
MONUSCO mandate renewed
- August**
Ebola outbreak in Province Orientale
ERC **Valerie Amos** visits DRC and Rwanda
- October**
Dr Denis Mukwege, rape survivor specialist, escapes assassination attempt
- November**
M-23 controls Goma during 10 days
Ebola ends in Province Orientale
- December**
2.7 million IDPs
\$30.5 million appeal for North Kivu crisis
CAR refugees cross into DRC
- January 2013**
IDPs in Katanga increase **500%** from 12 months earlier
- February**
Launch of the HAP 2013 of **\$892 million**, 12% higher than HAP 2012
- March**
UN resolution allows special brigade



- Legend**
- Congolese expelled from Angola
 - Rapatriment from the Republic of Congo
 - Movement of refugees from Central African Republic
 - Zones affected by LRA activity
 - Security incidents against humanitarian workers
 - Zones with presence of internally displaced people
 - Number of internally displaced people as of (31 march 2013)
 - Number of returned people (31 march 2013)
 - Number of Congolese refugees (31 march 2013)



Key facts and figures for 2012 and initial figures for 2013

Key figures ^(a)

6.4 million children vaccinated

against measles in 135 Health Zones already **3.2 million** children vaccinated in 2013

3.6 million people

received food aid from WFP

2.7 million internally displaced people

North Kivu hosts more than 920,000 internally displaced people of whom 626,000 since April 2012. 450%: Increase in IDPs in Katanga between Dec. 2011 and March 2013

More than 925,600 people

benefited from essential household items assistance

68,252 families

received shelter assistance

More than 6,500 survivors of sexual violence

of whom **2,853** children benefited from multi-sectoral assistance (medical, psychosocial, legal, socioeconomic reintegration and education/training) between January and June.

More than 2,150 children

liberated from armed forces and groups and reunited with their families.

Humanitarian access and security ^(b)



212 security incidents against humanitarian actors, of which 92% in the Kivus, 31 more than in 2011 (31 Dec. 2012) so far **74 incidents in 2013**



169 security incidents by alleged LRA fighters against civilians (31 Dec. 2012) already **54 incidents in 2013**

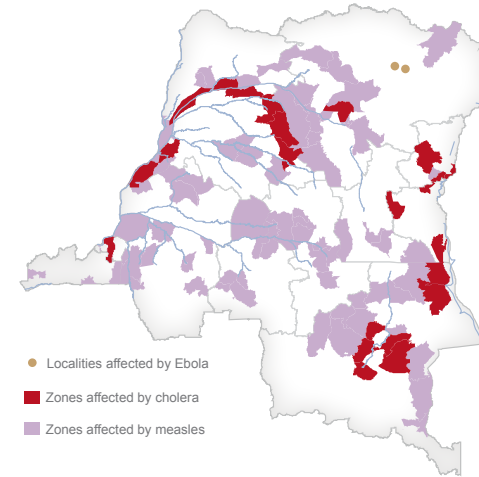


2,205 kilometer of roads rehabilitated in conflict zones



2 hours flight time between Kinshasa and Goma with UNHAS

Epidemics ^(c)



36 Ebola deaths

9 provinces affected by cholera in endemic and endo-endemic zones

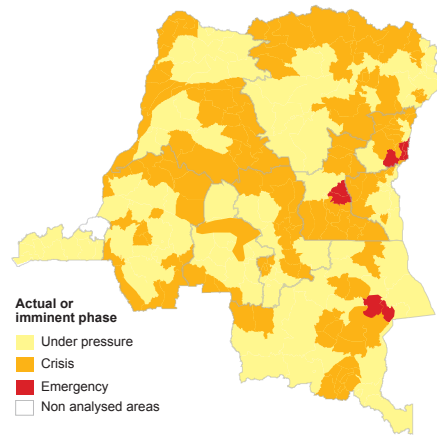
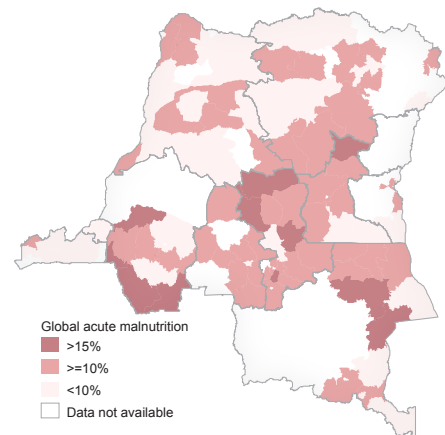
Food Security ^(d)

6.4 million people are in need of food assistance and emergency agricultural interventions

Nutrition ^(d)

11% rate of global acute malnutrition
43% rate of chronic malnutrition

Malnutrition and food security



Humanitarian Action Plan

Financing in 2013 ^(e)

Humanitarian Action Plan (HAP) 2013

\$892 million

Available (33%)

\$296 million

Gap (67%)

\$596 million

Planning figures for 2013 ^(e)

2.6 millions internally displaced people in DRC

450,000 households in host families

70,000 displaced households in spontaneous sites or camps

200,000 host families

755,000 returnees

450,000 Congolese refugees in Africa

63,500 Congolese refugees to repatriate in 2013

140,000 refugees in DRC

88,500 expelled from Angola

(a) Source: OCHA DRC and partners as of 31 March 2013

(b) Source: OCHA DRC and partners as of 31 December 2012

(c) Source: Ministry of Health and WHO as of 31 October 2012

(d) Source: 8th IPC cycle cycle as of 31 December 2012

(e) Source: FTS as of 22 April 2013