



KENYA

Registered refugees and asylum-seekers

as of 31 January 2023

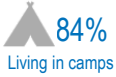
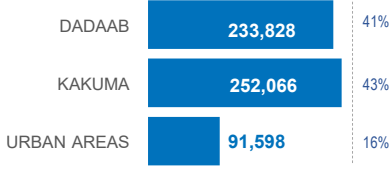


UNHCR
The UN Refugee Agency

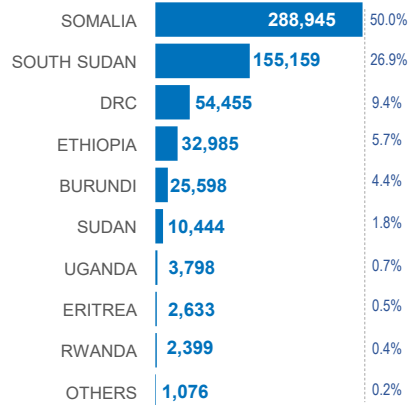
577,492

REGISTERED REFUGEES AND ASYLUM-SEEKERS

HOST LOCATIONS

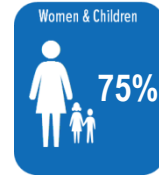


COUNTRIES OF ORIGIN

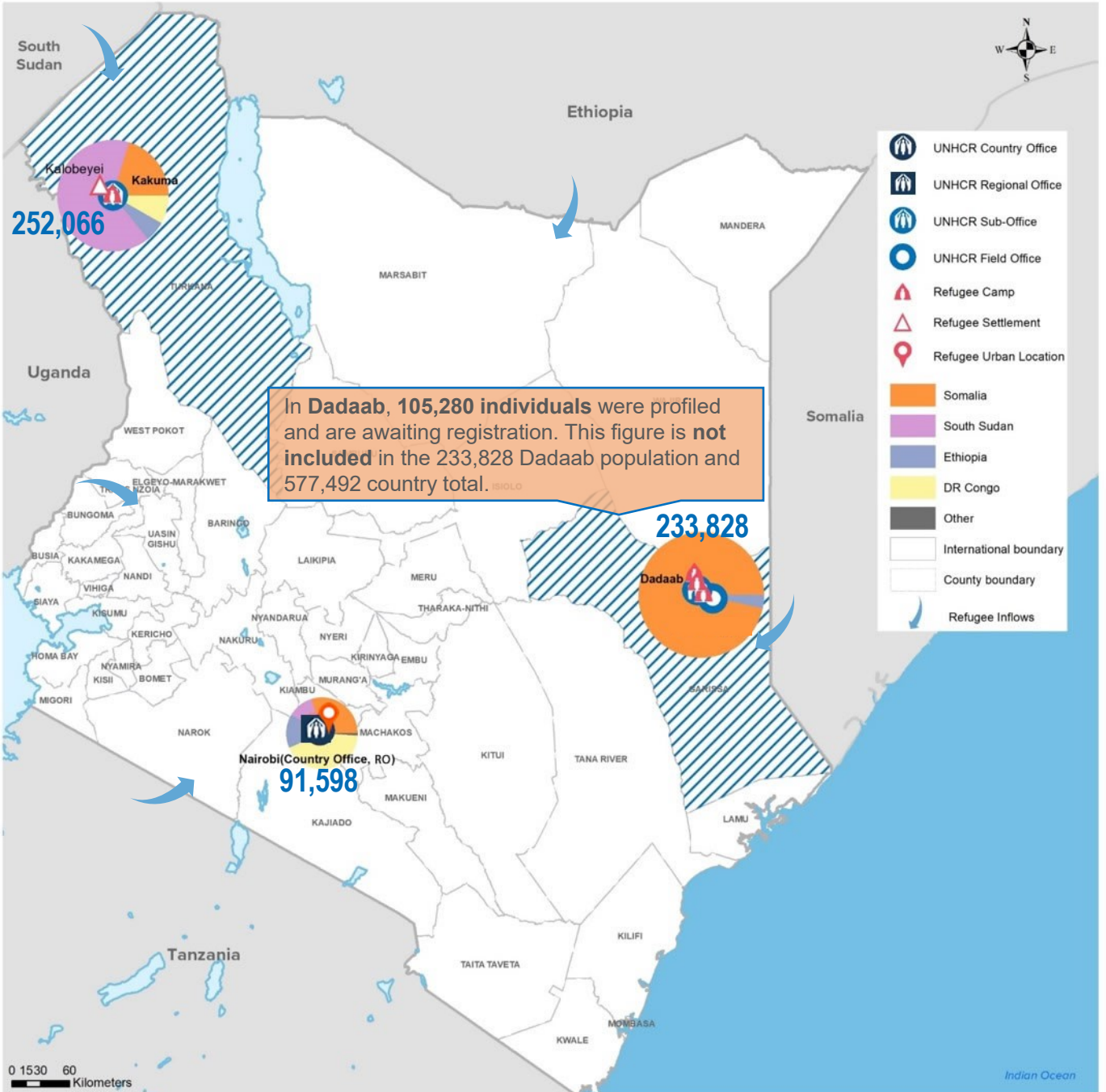


DEMOGRAPHICS

age and gender



LEGAL STATUS



The boundaries and names shown and the designations used on this map do not imply official endorsement or acceptance by the United Nations.



Statistical Summary

as of
31-Jan-2023

Refugees and Asylum Seekers in Kenya

	Total Refugee & Asylum Seeker Population	Dadaab Camp	Kakuma Camp	Kalobeyei Settlement	Urban (Eldoret)	Urban (Nbi, Msa & Nak)	
A. Refugees and Asylum Seekers	577,492	233,828	200,072	49,403	2,591	91,598	- Page 2
Undocumented Population		105,280					
B. Registration	4,204	174	3,273			757	- Page 6
C. Refugee Status Determination							- Page 7
1. Applied	2,072	0	1,468			604	
2. Recognized	99	0	97			2	
3. Rejected	0	0	0			0	
4. Pending	0	0	0			0	
D. 2022 Resettlement Submissions	286						- Page 8
E. 2022 Resettlement Departures	97						- Page 9
F. 2022 Voluntary Repatriation	0						- Page 10

SUMMARY

The refugee and asylum-seeker population in Kenya stood at 577,492 persons as of 31 January 2023, which comprises 506,715 (88%) refugees and 70,777 (12%) asylum-seekers. Compared with December of 2022, there is an increase of 3,984 individuals in the total population, from 573,508 to 577,492 mainly because of new arrivals from South Sudan, Burundi, the Democratic Republic of the Congo, Ethiopia and Somalia. **As of 31 January 2023, Dadaab population stood at 339,108 individuals (70,766 households). Of these, 233,828 individuals (45,338 households) are registered/documented. A total of 105,280 individuals (25,428 households) were profiled awaiting registration by the Department of Refugee Services (DRS).**

The PRIMES integrated Biometrics Identity Management System (BIMS) was actively used throughout the reporting period to secure individual identities of the population, thus ensuring continuity of identity over time and in different locations across the world, reducing avenues for identity fraud and other misrepresentations. Population Registration and Identity Management Eco-System (PRIMES) is a platform for all UNHCR registration and identity management tools and applications.

Additionally, the Global Distribution Tool (GDT) was used to extract verification and assistance distribution lists from PRIMES and to authenticate the identity of beneficiaries for assistance provided by UNHCR and partners. The Self-Service Kiosk (KASI) was used by refugees to make various appointments, including complaints, documentation and data correction/updates, with UNHCR (Protection), Department of Refugee Services and the Kakuma Kalobeyei Challenge Fund. KASI2 continued to be utilised by refugees who are residing in urban areas in order to access services provided by UNHCR and the Department of Refugee Services (DRS).

1. Population decreases

- a. Voluntary Repatriation:** During the month of January 2023, no persons were assisted to return to their places of origin voluntarily.
- b. Resettlement:** During the month of January 2023, a total of 97 refugees departed to various resettlement countries.
- c. Other Decreases:** Closure/Inactivation of 40 individuals was undertaken during the continuous registration activities within the month of January 2023. These include spontaneous departures, reported deaths, erroneous data entries and others.

2. Population increases

a. Registration: Total number of persons registered by DRS during the month of January 2023 stands at 4,204 (Camps 3,447 and Urban 757) as follows:-

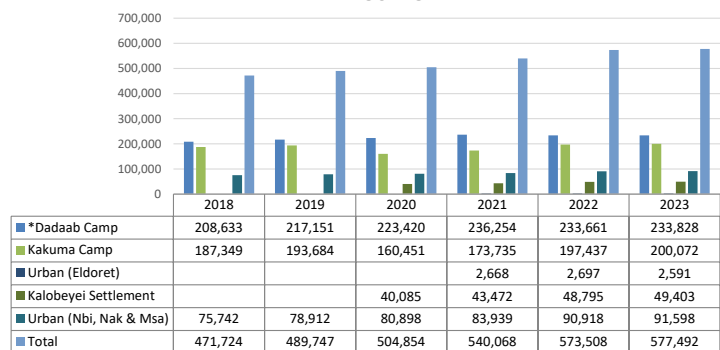
- i. In-Situ: 364
- ii. New arrival: 2,994
- iii. New birth registration: 846

b. Other Increases: A total of 49 individuals were re-activated after re-establishing contact with the Department of Refugee Services during continuous registration activities within the month of January 2023.

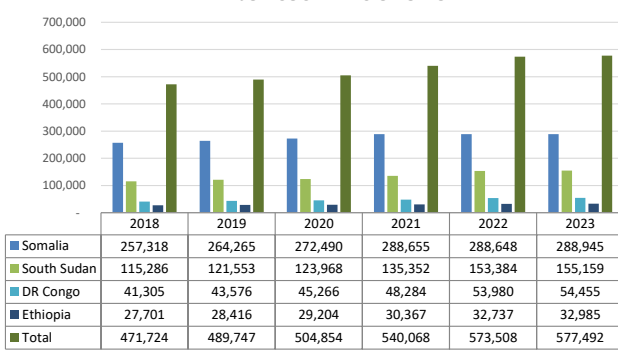
REFUGEES AND ASYLUM SEEKERS IN KENYA BY COUNTRY OF ORIGIN AND LOCATION

Country of Origin	2018				2019				2020				2021				2022				2023										
	Dadaab Camp	Kakuma Camp	Nairobi	Total	Dadaab Camp	Kakuma Camp	Nairobi	Total	Dadaab Camp	Kakuma Camp	Kalobeyei Settlement	Urban (Nbi, Nak & Msa)	Total	Dadaab Camp	Kakuma Camp	Kalobeyei Settlement	Urban (Eldoret)	Urban (Nbi, Nak & Msa)	Total	Dadaab Camp	Kakuma Camp	Kalobeyei Settlement	Urban (Eldoret)	Urban (Nbi, Nak & Msa)	Total						
Total	208,633	187,349	75,742	471,724	217,151	193,684	78,912	489,747	223,420	160,451	40,085	80,898	504,854	236,254	173,735	43,472	2,668	83,939	540,068	233,661	197,437	48,795	2,697	90,918	573,508	233,828	200,072	49,403	2,591	91,598	577,492
Somalia	200,886	33,844	22,588	257,318	208,431	34,620	21,214	264,265	215,060	35,743	104	21,583	272,490	228,254	37,412	117	59	22,813	288,655	225,916	38,896	127	60	23,649	288,648	226,081	38,986	127	60	23,691	288,945
South Sudan	978	108,450	5,858	115,286	938	112,189	8,426	121,553	625	85,107	29,778	8,458	123,968	641	90,832	32,954	2,452	8,473	135,352	596	104,543	37,203	2,485	8,557	153,384	596	105,929	37,719	2,374	8,541	155,159
DR Congo	93	12,232	28,980	41,305	77	13,453	30,046	43,576	78	12,990	1,487	30,711	45,266	98	15,428	1,605	5	31,148	48,284	123	18,156	1,944	5	33,752	53,980	123	18,337	1,972	5	34,018	54,455
Ethiopia	6,478	10,502	10,721	27,701	7,502	10,148	10,766	28,416	7,480	5,605	5,017	11,102	29,204	7,088	6,033	5,109	87	12,050	30,367	6,860	6,650	5,359	85	13,783	32,737	6,862	6,752	5,319	85	13,967	32,985
Burundi	65	10,020	3,237	13,322	72	11,235	3,791	15,098	64	9,437	2,791	4,228	16,520	65	12,114	2,729	6	4,239	19,153	58	16,153	3,104	8	5,268	24,591	58	16,937	3,191	8	5,404	25,598
Sudan	46	9,879	181	10,106	46	9,700	180	9,926	24	9,550	356	179	10,109	15	9,383	355	34	192	9,979	16	9,824	373	26	200	10,439	16	9,822	377	29	200	10,444
Uganda	65	1,501	846	2,412	70	1,523	906	2,499	72	1,234	445	875	2,626	75	1,657	486	9	859	3,086	75	2,132	585	12	955	3,759	75	2,148	592	12	971	3,798
Eritrea	4	192	1,607	1,803	4	34	1,793	1,831	4	40	1	1,851	1,896	4	36	1	11	2,149	2,201	4	72	1	11	2,511	2,599	4	72	1	11	2,545	2,633
Rwanda	11	612	1,117	1,740	7	652	1,129	1,788	8	634	64	1,165	1,871	9	748	66	-	1,166	1,989	10	931	79	1	1,283	2,304	10	1,007	84	3	1,295	2,399
Other	7	117	607	731	4	130	661	795	5	111	42	746	904	5	92	50	5	850	1,002	3	80	20	4	960	1,067	3	82	21	4	966	1,076

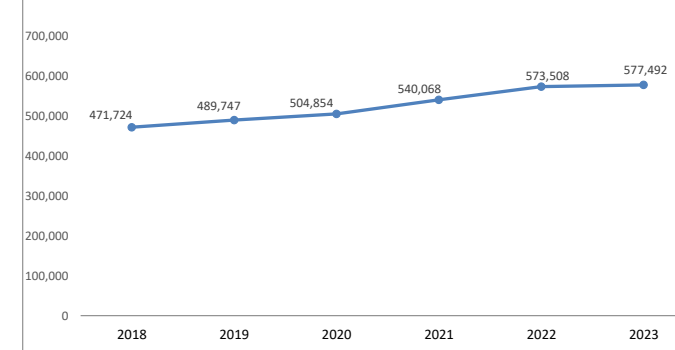
TREND BY LOCATION



TREND BY MAJOR COUNTRIES OF ORIGIN



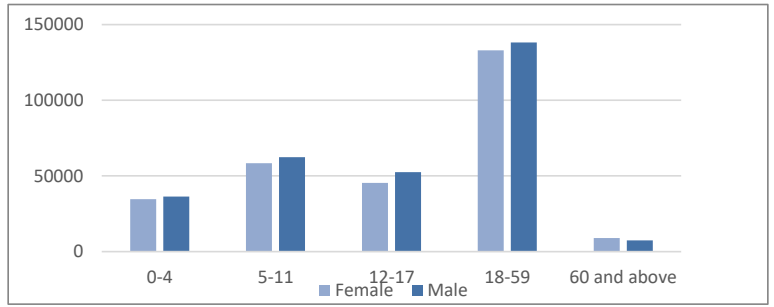
FIVE YEAR POPULATION TREND



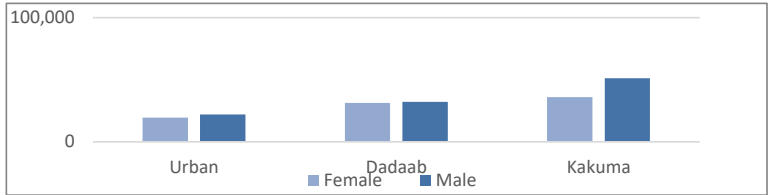
*As of 31 January 2023, Dadaab population stood at 339,108 individuals (70,766 households). Of these, 233,828 individuals (45,338 households) are registered/documented. A total of 105,280 individuals (25,428 households) were profiled awaiting registration by the Department of Refugee Services.

REFUGEES AND ASYLUM SEEKERS IN KENYA : DEMOGRAPHIC BREAKDOWN

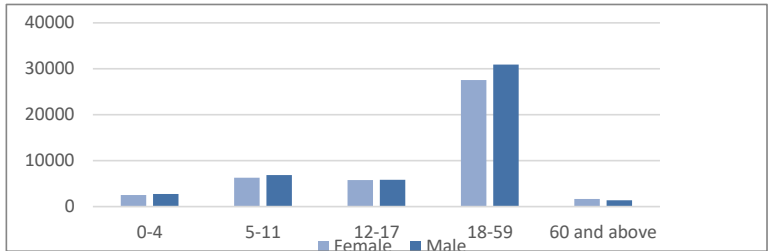
Total Kenya	Age Group	Sex				Total	
		Female		Male			
		#	%	#	%	#	%
	0-4	34,699	6.0%	36,415	6.3%	71,114	12.3%
	5-11	58,432	10.1%	62,453	10.8%	120,885	20.9%
	12-17	45,436	7.9%	52,496	9.1%	97,932	17.0%
	18-59	132,904	23.0%	138,168	23.9%	271,072	46.9%
	60 and above	9,059	1.6%	7,430	1.3%	16,489	2.9%
	Total	280,530	48.6%	296,962	51.4%	577,492	



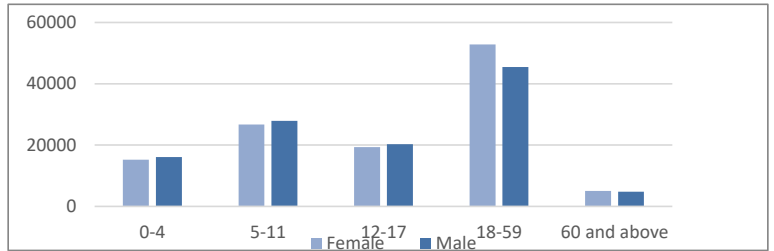
18 - 35 years	Site Name	Sex				Total	
		Female		Male			
		#	%	#	%	#	%
	Urban	19,412	10.1%	22,139	11.5%	41,551	21.6%
	Dadaab	31,347	16.3%	32,172	16.7%	63,519	33.0%
	Kakuma	36,062	18.8%	51,159	26.6%	87,221	45.4%
	Total	86,821	45.2%	105,470	54.8%	192,291	



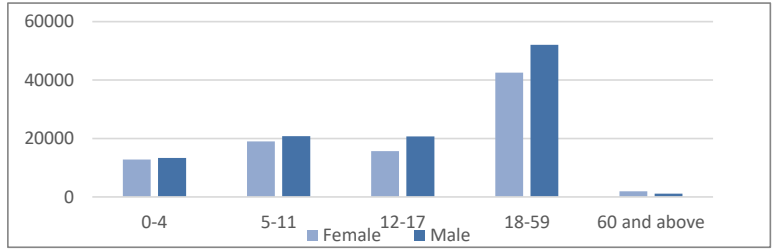
Urban (Nbi, Nak & Misa)	Age Group	Sex				Total	
		Female		Male			
		#	%	#	%	#	%
	0-4	2,545	2.8%	2,733	3.0%	5,278	5.8%
	5-11	6,311	6.9%	6,867	7.5%	13,178	14.4%
	12-17	5,762	6.3%	5,856	6.4%	11,618	12.7%
	18-59	27,568	30.1%	30,919	33.8%	58,487	63.9%
	60 and above	1,679	1.8%	1,358	1.5%	3,037	3.3%
	Total	43,865	47.9%	47,733	52.1%	91,598	



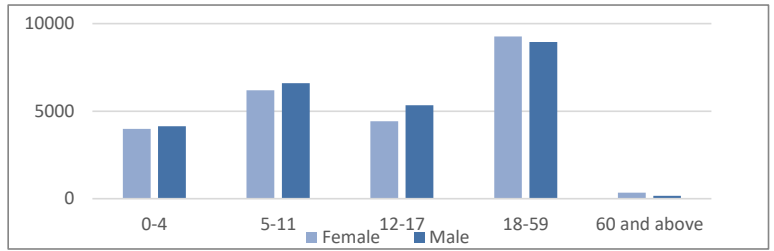
Dadaab Camp	Age Group	Sex				920	
		Female		Male		#	%
		#	%	#	%	#	%
	0-4	15,242	6.5%	16,128	6.9%	31,370	13.4%
	5-11	26,702	11.4%	27,922	11.9%	54,624	23.4%
	12-17	19,370	8.3%	20,329	8.7%	39,699	17.0%
	18-59	52,837	22.6%	45,488	19.5%	98,325	42.1%
	60 and above	5,020	2.1%	4,790	2.0%	9,810	4.2%
	Total	119,171	51.0%	114,657	49.0%	233,828	



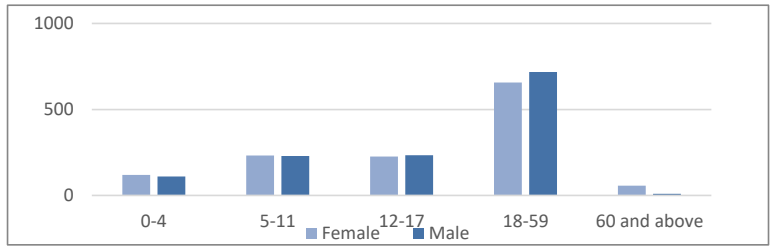
Kakuma Camp	Age Group	Sex				920	
		Female		Male		#	%
		#	%	#	%	#	%
	0-4	12,808	6.4%	13,306	6.7%	26,114	13.1%
	5-11	18,993	9.5%	20,833	10.4%	39,826	19.9%
	12-17	15,659	7.8%	20,740	10.4%	36,399	18.2%
	18-59	42,581	21.3%	52,090	26.0%	94,671	47.3%
	60 and above	1,957	1.0%	1,105	0.6%	3,062	1.5%
	Total	91,998	46.0%	108,074	54.0%	200,072	



Kalobeyei Settlement	Age Group	Sex				Total	
		Female		Male		#	%
		#	%	#	%	#	%
	0-4	3,984	2.0%	4,138	2.1%	8,122	16.4%
	5-11	6,193	3.1%	6,602	3.3%	12,795	25.9%
	12-17	4,419	2.2%	5,337	2.7%	9,756	19.7%
	18-59	9,262	4.6%	8,954	4.5%	18,216	36.9%
	60 and above	346	0.2%	168	0.1%	514	1.0%
	Total	24,204	49.0%	25,199	51.0%	49,403	



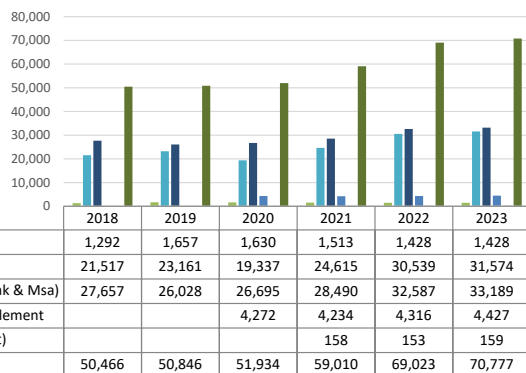
Urban (Eldoret)	Age Group	Sex				Total	
		Female		Male		#	%
		#	%	#	%	#	%
	0-4	120	0.1%	110	0.1%	230	0.5%
	5-11	233	0.1%	229	0.1%	462	0.9%
	12-17	226	0.1%	234	0.1%	460	0.9%
	18-59	656	0.3%	717	0.4%	1,373	2.8%
	60 and above	57	0.0%	9	0.0%	66	0.1%
	Total	1,292	49.9%	1,299	50.1%	2,591	



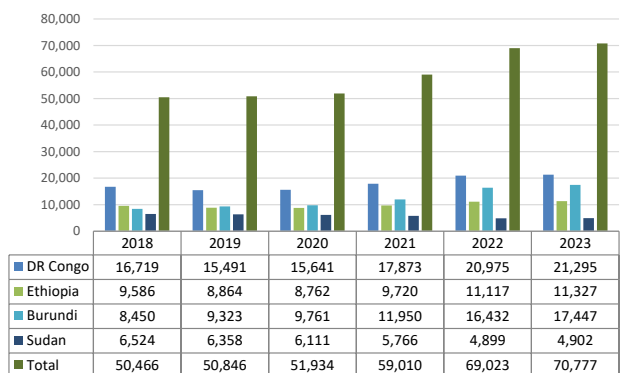
ASYLUM SEEKERS STATISTICS BY COUNTRY OF ORIGIN AND LOCATION

Country of Origin	2018				2019				2020					2021					2022					2023							
	Dadaab Camp	Kakuma Camp	Nairobi	Total	Dadaab Camp	Kakuma Camp	Nairobi	Total	Dadaab Camp	Kakuma Camp	Kalobeyei Settlement	Urban (Nbi, Nak & Msa)	Total	Dadaab Camp	Kakuma Camp	Kalobeyei Settlement	Urban (Eldoret)	Urban (Nbi, Nak & Msa)	Total	Dadaab Camp	Kakuma Camp	Kalobeyei Settlement	Urban (Eldoret)	Urban (Nbi, Nak & Msa)	Total	Dadaab Camp	Kakuma Camp	Kalobeyei Settlement	Urban (Eldoret)	Urban (Nbi, Nak & Msa)	Total
Total	1,292	21,517	27,657	50,466	1,657	23,161	26,028	50,846	1,630	19,337	4,272	26,695	51,934	1,513	24,615	4,234	158	28,490	59,010	1,428	30,539	4,316	153	32,587	69,023	1,428	31,574	4,427	159	33,189	70,777
DR Congo	8	3,465	13,246	16,719	6	4,493	10,992	15,491	8	4,299	449	10,885	15,641	15	6,441	472	5	10,940	17,873	18	8,460	546	5	11,946	20,975	18	8,535	556	5	12,181	21,295
Ethiopia	881	3,286	5,419	9,586	1,199	3,162	4,503	8,864	1,220	1,869	1,103	4,570	8,762	1,072	2,167	1,124	87	5,270	9,720	1,011	2,431	982	85	6,608	11,117	1,011	2,488	974	85	6,769	11,327
Burundi	22	6,239	2,189	8,450	30	6,878	2,415	9,323	29	5,038	1,921	2,773	9,761	26	7,346	1,778	6	2,794	11,950	26	10,833	1,871	8	3,694	16,432	26	11,623	1,961	8	3,829	17,447
Sudan	2	6,455	67	6,524	15	6,291	52	6,358	4	5,791	267	49	6,111	4	5,403	269	33	57	5,766	3	4,572	237	25	62	4,899	3	4,568	241	28	62	4,902
Somalia	330	310	4,180	4,820	340	587	5,572	6,499	350	935	16	5,837	7,138	376	1,311	26	2	6,461	8,176	351	1,625	24	2	6,721	8,723	351	1,641	24	2	6,727	8,745
Uganda	6	1,124	439	1,569	6	1,151	452	1,609	7	873	424	485	1,789	6	1,296	465	9	516	2,292	6	1,766	556	12	618	2,958	6	1,788	563	12	633	3,002
Eritrea	2	158	936	1,096	2	10	950	962	2	14	1	991	1,008	2	22	1	11	1,263	1,299	2	53	1	11	1,590	1,657	2	53	1	11	1,621	1,688
Rwanda	7	404	681	1,092	7	465	584	1,056	8	440	64	615	1,127	9	537	65	-	612	1,223	9	696	78	1	709	1,493	9	772	83	3	721	1,588
Other	3	70	453	526	1	79	461	541	2	70	25	444	541	2	47	31	5	529	614	-	63	16	4	591	674	-	65	17	4	597	683
South Sudan	31	6	47	84	51	45	47	143	-	8	2	46	56	1	45	3	-	48	97	2	40	5	-	48	95	2	41	7	1	49	100

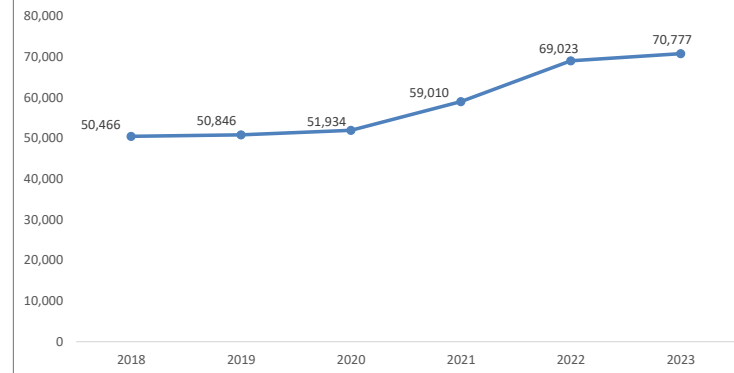
TREND BY LOCATION



TREND BY MAJOR COUNTRIES OF ORIGIN



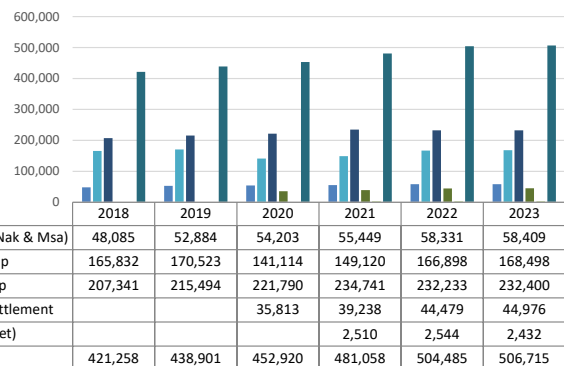
FIVE YEAR POPULATION TREND



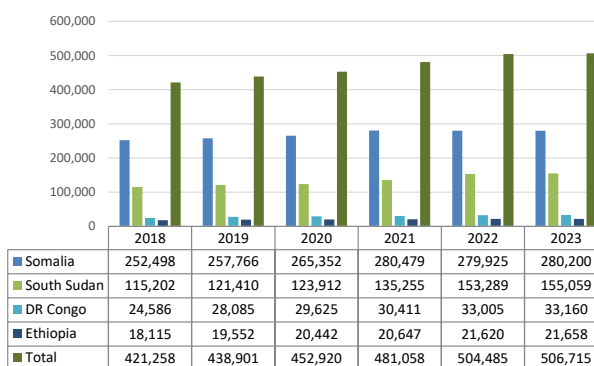
REFUGEES IN KENYA BY SETTLEMENT OF ORIGIN AND LOCATION

Country of Origin	2018				2019				2020					2021					2022					2023							
	Dadaab Camp	Kakuma Camp	Nairobi	Total	Dadaab Camp	Kakuma Camp	Nairobi	Total	Dadaab Camp	Kakuma Camp	Kalobeyei Settlement	Urban (Nbi, Nak & Msa)	Total	Dadaab Camp	Kakuma Camp	Kalobeyei Settlement	Urban (Eldoret)	Urban (Nbi, Nak & Msa)	Total	Dadaab Camp	Kakuma Camp	Kalobeyei Settlement	Urban (Eldoret)	Urban (Nbi, Nak & Msa)	Total	Dadaab Camp	Kakuma Camp	Kalobeyei Settlement	Urban (Eldoret)	Urban (Nbi, Nak & Msa)	Total
Total	207,341	165,832	48,085	421,258	215,494	170,523	52,884	438,901	221,790	141,114	35,813	54,203	452,920	234,741	149,120	39,238	2,510	55,449	481,058	232,233	166,898	44,479	2,544	58,331	504,485	232,400	168,498	44,976	2,432	58,409	506,715
Somalia	200,556	33,534	18,408	252,498	208,091	34,033	15,642	257,766	214,710	34,808	88	15,746	265,352	227,878	36,101	91	57	16,352	280,479	225,565	37,271	103	58	16,928	279,925	225,730	37,345	103	58	16,964	280,200
South Sudan	947	108,444	5,811	115,202	887	112,144	8,379	121,410	625	85,099	29,776	8,412	123,912	640	90,787	32,951	2,452	8,425	135,255	594	104,503	37,198	2,485	8,509	153,289	594	105,888	37,712	2,373	8,492	155,059
DR Congo	85	8,767	15,734	24,586	71	8,960	19,054	28,085	70	8,691	1,038	19,826	29,625	83	8,987	1,133	0	20,208	30,411	105	9,696	1,398	0	21,806	33,005	105	9,802	1,416	0	21,837	33,160
Ethiopia	5,597	7,216	5,302	18,115	6,303	6,986	6,263	19,552	6,260	3,736	3,914	6,532	20,442	6,016	3,866	3,985	0	6,780	20,647	5,849	4,219	4,377	0	7,175	21,620	5,851	4,264	4,345	0	7,198	21,658
Burundi	43	3,781	1,048	4,872	42	4,357	1,376	5,775	35	4,399	870	1,455	6,759	39	4,768	951	0	1,445	7,203	32	5,320	1,233	0	1,574	8,159	32	5,314	1,230	0	1,575	8,151
Sudan	44	3,424	114	3,582	31	3,409	128	3,568	20	3,759	89	130	3,998	11	3,980	86	1	135	4,213	13	5,252	136	1	138	5,540	13	5,254	136	1	138	5,542
Uganda	59	377	407	843	64	372	454	890	65	361	21	390	837	69	361	21	0	343	794	69	366	29	0	337	801	69	360	29	0	338	796
Eritrea	2	34	671	707	2	24	843	869	2	26	0	860	888	2	14	0	0	886	902	2	19	0	0	921	942	2	19	0	0	924	945
Rwanda	4	208	436	648	0	187	545	732	0	194	0	550	744	0	211	1	0	554	766	1	235	1	0	574	811	1	235	1	0	574	811
Other	4	47	154	205	3	51	200	254	3	41	17	302	363	3	45	19	0	321	388	3	17	4	0	369	393	3	17	4	0	369	393

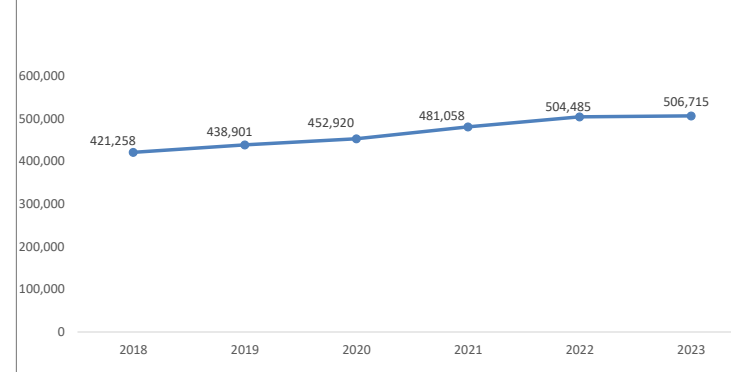
TREND BY LOCATION



TREND BY MAJOR COUNTRIES OF ORIGIN



FIVE YEAR POPULATION TREND



KENYA REGISTRATION TREND BY LOCATION AND COUNTRY OF ORIGIN

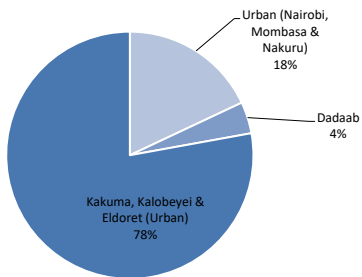
Month	Total	Country of Origin																										
		AFG	ANG	BDI	BKF	CAR	COB	COD	CMR	ERT	ETH	ICO	LBR	NIG	RSA	RWA	SLE	SOM	SSD	SUD	SYR	TAN	TIB	TUR	UGA	YEM	ZIM	OTHER
Jan	4,204	6	-	1,211	-	1	-	574	-	32	241	-	-	-	-	89	-	270	1,690	32	-	1	-	-	56	-	-	1
Feb	0	-	-	-	-	-	-	-	-	-	-	-	-	-	-	-	-	-	-	-	-	-	-	-	-	-	-	-
Mar	0	-	-	-	-	-	-	-	-	-	-	-	-	-	-	-	-	-	-	-	-	-	-	-	-	-	-	-
Apr	0	-	-	-	-	-	-	-	-	-	-	-	-	-	-	-	-	-	-	-	-	-	-	-	-	-	-	-
May	0	-	-	-	-	-	-	-	-	-	-	-	-	-	-	-	-	-	-	-	-	-	-	-	-	-	-	-
Jun	0	-	-	-	-	-	-	-	-	-	-	-	-	-	-	-	-	-	-	-	-	-	-	-	-	-	-	-
Jul	0	-	-	-	-	-	-	-	-	-	-	-	-	-	-	-	-	-	-	-	-	-	-	-	-	-	-	-
Aug	0	-	-	-	-	-	-	-	-	-	-	-	-	-	-	-	-	-	-	-	-	-	-	-	-	-	-	-
Sep	0	-	-	-	-	-	-	-	-	-	-	-	-	-	-	-	-	-	-	-	-	-	-	-	-	-	-	-
Oct	0	-	-	-	-	-	-	-	-	-	-	-	-	-	-	-	-	-	-	-	-	-	-	-	-	-	-	-
Nov	0	-	-	-	-	-	-	-	-	-	-	-	-	-	-	-	-	-	-	-	-	-	-	-	-	-	-	-
Dec	0	-	-	-	-	-	-	-	-	-	-	-	-	-	-	-	-	-	-	-	-	-	-	-	-	-	-	-
Total	4,204	6	0	1,211	0	1	0	574	0	32	241	0	0	0	0	89	0	270	1,690	32	0	1	0	0	56	0	0	1

Month	Total	Country of Origin																										
		AFG	ANG	BDI	BKF	CAR	COB	COD	CMR	ERT	ETH	IND	LBR	NIG	RSA	RWA	SLE	SOM	SSD	SUD	SYR	TAN	TIB	TUR	UGA	YEM	ZIM	OTHER
Jan	757	6	-	154	-	-	-	304	-	32	176	-	-	-	-	6	-	17	46	-	-	-	-	-	16	-	-	-
Feb	0	-	-	-	-	-	-	-	-	-	-	-	-	-	-	-	-	-	-	-	-	-	-	-	-	-	-	-
Mar	0	-	-	-	-	-	-	-	-	-	-	-	-	-	-	-	-	-	-	-	-	-	-	-	-	-	-	-
Apr	0	-	-	-	-	-	-	-	-	-	-	-	-	-	-	-	-	-	-	-	-	-	-	-	-	-	-	-
May	0	-	-	-	-	-	-	-	-	-	-	-	-	-	-	-	-	-	-	-	-	-	-	-	-	-	-	-
Jun	0	-	-	-	-	-	-	-	-	-	-	-	-	-	-	-	-	-	-	-	-	-	-	-	-	-	-	-
Jul	0	-	-	-	-	-	-	-	-	-	-	-	-	-	-	-	-	-	-	-	-	-	-	-	-	-	-	-
Aug	0	-	-	-	-	-	-	-	-	-	-	-	-	-	-	-	-	-	-	-	-	-	-	-	-	-	-	-
Sep	0	-	-	-	-	-	-	-	-	-	-	-	-	-	-	-	-	-	-	-	-	-	-	-	-	-	-	-
Oct	0	-	-	-	-	-	-	-	-	-	-	-	-	-	-	-	-	-	-	-	-	-	-	-	-	-	-	-
Nov	0	-	-	-	-	-	-	-	-	-	-	-	-	-	-	-	-	-	-	-	-	-	-	-	-	-	-	-
Dec	0	-	-	-	-	-	-	-	-	-	-	-	-	-	-	-	-	-	-	-	-	-	-	-	-	-	-	-
Total	757	6	0	154	0	0	0	304	0	32	176	0	0	0	0	6	0	17	46	0	0	0	0	0	16	0	0	0

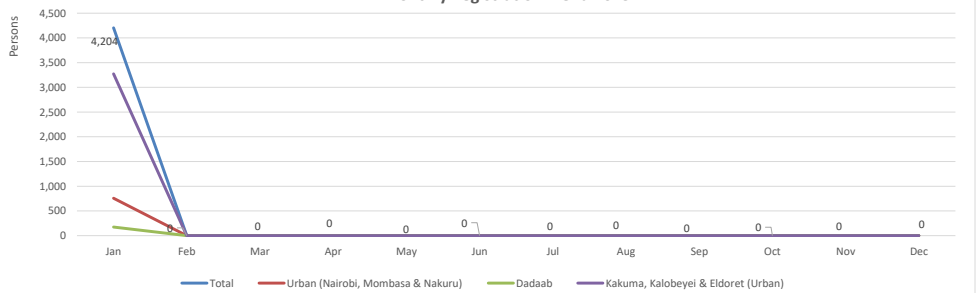
Month	Total	Country of Origin																										
		AFG	ANG	BDI	BKF	CAR	COB	COD	CMR	ERT	ETH	ICO	LBR	NIG	RSA	RWA	SLE	SOM	SSD	SUD	SYR	TAN	TIB	TUR	UGA	YEM	ZIM	Other
Jan	174	-	-	-	-	-	-	-	-	-	3	-	-	-	-	-	-	171	-	-	-	-	-	-	-	-	-	-
Feb	0	-	-	-	-	-	-	-	-	-	-	-	-	-	-	-	-	-	-	-	-	-	-	-	-	-	-	-
Mar	0	-	-	-	-	-	-	-	-	-	-	-	-	-	-	-	-	-	-	-	-	-	-	-	-	-	-	-
Apr	0	-	-	-	-	-	-	-	-	-	-	-	-	-	-	-	-	-	-	-	-	-	-	-	-	-	-	-
May	0	-	-	-	-	-	-	-	-	-	-	-	-	-	-	-	-	-	-	-	-	-	-	-	-	-	-	-
Jun	0	-	-	-	-	-	-	-	-	-	-	-	-	-	-	-	-	-	-	-	-	-	-	-	-	-	-	-
Jul	0	-	-	-	-	-	-	-	-	-	-	-	-	-	-	-	-	-	-	-	-	-	-	-	-	-	-	-
Aug	0	-	-	-	-	-	-	-	-	-	-	-	-	-	-	-	-	-	-	-	-	-	-	-	-	-	-	-
Sep	0	-	-	-	-	-	-	-	-	-	-	-	-	-	-	-	-	-	-	-	-	-	-	-	-	-	-	-
Oct	0	-	-	-	-	-	-	-	-	-	-	-	-	-	-	-	-	-	-	-	-	-	-	-	-	-	-	-
Nov	0	-	-	-	-	-	-	-	-	-	-	-	-	-	-	-	-	-	-	-	-	-	-	-	-	-	-	-
Dec	0	-	-	-	-	-	-	-	-	-	-	-	-	-	-	-	-	-	-	-	-	-	-	-	-	-	-	-
Total	174	0	0	0	0	0	0	0	0	0	3	0	0	0	0	0	0	171	0	0	0	0	0	0	0	0	0	0

Month	Total	Country of Origin																										
		AFG	ANG	BDI	BKF	CAR	COB	COD	CMR	ERT	ETH	ICO	LBR	NIG	RSA	RWA	SLE	SOM	SSD	SUD	SYR	TAN	TIB	TUR	UGA	YEM	ZIM	Other
Jan	3,273	-	-	1,057	-	1	-	270	-	-	62	-	-	-	-	83	-	82	1,644	32	-	1	-	-	40	-	-	1
Feb	0	-	-	-	-	-	-	-	-	-	-	-	-	-	-	-	-	-	-	-	-	-	-	-	-	-	-	-
Mar	0	-	-	-	-	-	-	-	-	-	-	-	-	-	-	-	-	-	-	-	-	-	-	-	-	-	-	-
Apr	0	-	-	-	-	-	-	-	-	-	-	-	-	-	-	-	-	-	-	-	-	-	-	-	-	-	-	-
May	0	-	-	-	-	-	-	-	-	-	-	-	-	-	-	-	-	-	-	-	-	-	-	-	-	-	-	-
Jun	0	-	-	-	-	-	-	-	-	-	-	-	-	-	-	-	-	-	-	-	-	-	-	-	-	-	-	-
Jul	0	-	-	-	-	-	-	-	-	-	-	-	-	-	-	-	-	-	-	-	-	-	-	-	-	-	-	-
Aug	0	-	-	-	-	-	-	-	-	-	-	-	-	-	-	-	-	-	-	-	-	-	-	-	-	-	-	-
Sep	0	-	-	-	-	-	-	-	-	-	-	-	-	-	-	-	-	-	-	-	-	-	-	-	-	-	-	-
Oct	0	-	-	-	-	-	-	-	-	-	-	-	-	-	-	-	-	-	-	-	-	-	-	-	-	-	-	-
Nov	0	-	-	-	-	-	-	-	-	-	-	-	-	-	-	-	-	-	-	-	-	-	-	-	-	-	-	-
Dec	0	-	-	-	-	-	-	-	-	-	-	-	-	-	-	-	-	-	-	-	-	-	-	-	-	-	-	-
Total	3,273	0	0	1,057	0	1	0	270	0	0	62	0	0	0	0	83	0	82	1,644	32	0	1	0	0	40	0	0	1

Registration Distribution by Location

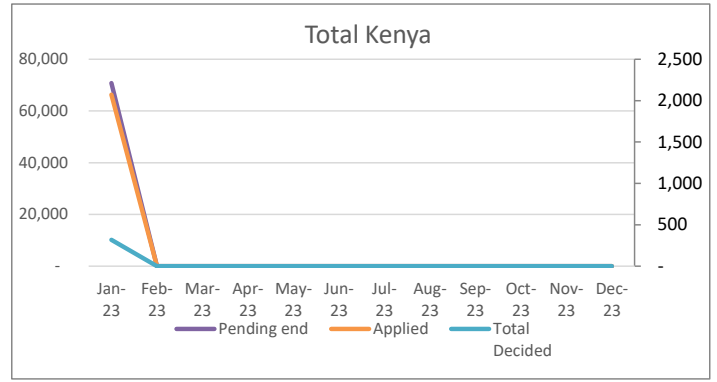


Monthly Registration Trend 2023

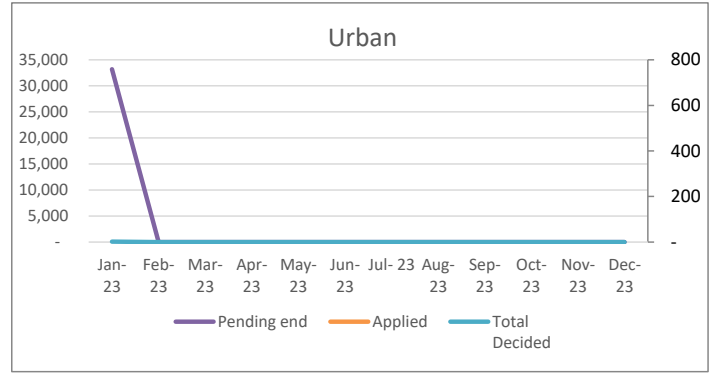


Individual Asylum Applications and Refugee Status Determination Trend

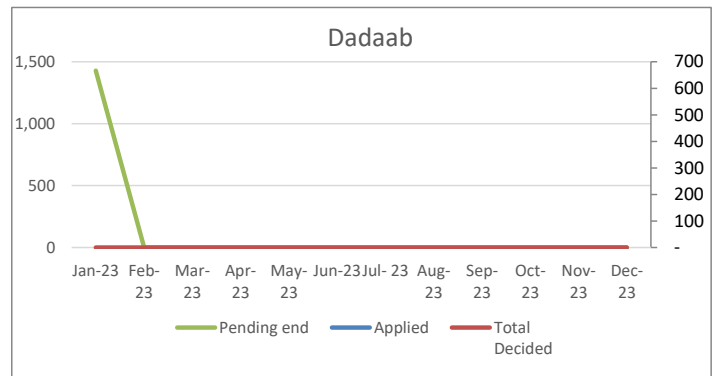
Total	Month	Pending begin	Applied	Reco-gnized	Reje-cted	Oth. Closed	Total Decided	Pending end
	Jan-23	69,023	2,072	99	-	219	318	70,777
	Feb-23	-	-	-	-	-	-	-
	Mar-23	-	-	-	-	-	-	-
	Apr-23	-	-	-	-	-	-	-
	May-23	-	-	-	-	-	-	-
	Jun-23	-	-	-	-	-	-	-
	Jul-23	-	-	-	-	-	-	-
	Aug-23	-	-	-	-	-	-	-
	Sep-23	-	-	-	-	-	-	-
	Oct-23	-	-	-	-	-	-	-
	Nov-23	-	-	-	-	-	-	-
	Dec-23	-	-	-	-	-	-	-
Total		2,072	99	-	219	318		



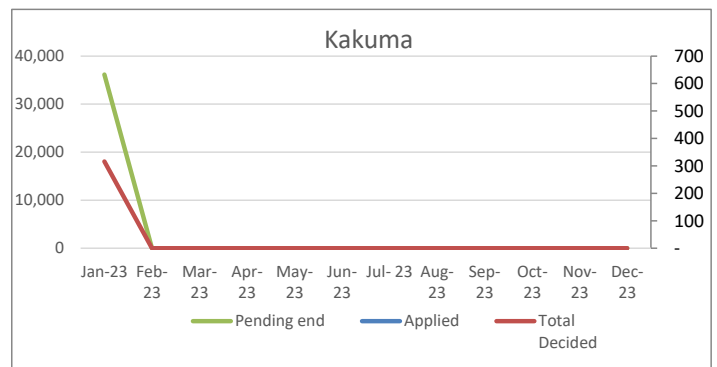
Urban	Month	Pending begin	Applied	Reco-gnized	Reje-cted	Oth. Closed	Total Decided	Pending end
	Jan-23	32,587	604	2	-	-	2	33,189
	Feb-23	-	-	-	-	-	-	-
	Mar-23	-	-	-	-	-	-	-
	Apr-23	-	-	-	-	-	-	-
	May-23	-	-	-	-	-	-	-
	Jun-23	-	-	-	-	-	-	-
	Jul-23	-	-	-	-	-	-	-
	Aug-23	-	-	-	-	-	-	-
	Sep-23	-	-	-	-	-	-	-
	Oct-23	-	-	-	-	-	-	-
	Nov-23	-	-	-	-	-	-	-
	Dec-23	-	-	-	-	-	-	-
Total		604	2	-	-	2		



Dadaab	Month	Pending begin	Applied	Reco-gnized	Reje-cted	Oth. Closed	Total Decided	Pending end
	Jan-23	1,428	-	-	-	-	-	1,428
	Feb-23	-	-	-	-	-	-	-
	Mar-23	-	-	-	-	-	-	-
	Apr-23	-	-	-	-	-	-	-
	May-23	-	-	-	-	-	-	-
	Jun-23	-	-	-	-	-	-	-
	Jul-23	-	-	-	-	-	-	-
	Aug-23	-	-	-	-	-	-	-
	Sep-23	-	-	-	-	-	-	-
	Oct-23	-	-	-	-	-	-	-
	Nov-23	-	-	-	-	-	-	-
	Dec-23	-	-	-	-	-	-	-
Total		-	-	-	-	-		



Kakuma, Kalobeyi & Eldoret	Month	Pending begin	Applied	Reco-gnized	Reje-cted	Oth. Closed	Total Decided	Pending end
	Jan-23	35,008	1,468	97	-	219	316	36,160
	Feb-23	-	-	-	-	-	-	-
	Mar-23	-	-	-	-	-	-	-
	Apr-23	-	-	-	-	-	-	-
	May-23	-	-	-	-	-	-	-
	Jun-23	-	-	-	-	-	-	-
	Jul-23	-	-	-	-	-	-	-
	Aug-23	-	-	-	-	-	-	-
	Sep-23	-	-	-	-	-	-	-
	Oct-23	-	-	-	-	-	-	-
	Nov-23	-	-	-	-	-	-	-
	Dec-23	-	-	-	-	-	-	-
Total		1,468	97	-	219	316		



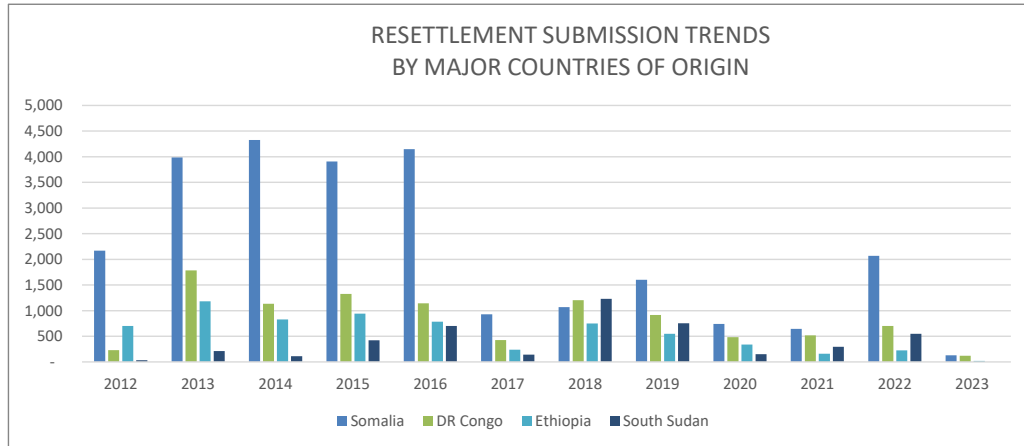
RESETTLEMENT SUBMISSION BY COUNTRY OF ORIGIN

Country of Origin	2012	2013	2014	2015	2016	2017	2018	2019	2020	2021	2022	2023	Total
Somalia	2,170	3,985	4,325	3,909	4,147	929	1,068	1,600	740	643	2,068	129	25,713
DR Congo	230	1,783	1,132	1,326	1,143	424	1,203	916	484	519	700	121	9,981
Ethiopia	700	1,181	830	941	785	237	748	549	337	159	225	22	6,714
South Sudan	33	214	111	420	701	143	1,229	753	152	296	548	-	4,600
Sudan	30	29	158	541	104	4	34	3	2	10	18	1	934
Uganda	5	24	88	108	107	47	136	191	12	6	11	-	735
Burundi	22	58	46	121	81	100	121	104	60	54	76	13	856
Eritrea	20	111	73	116	55	26	39	36	12	2	10	-	500
Rwanda	24	22	31	78	26	10	17	15	10	6	15	-	254
Other	5	5	11	26	14	20	16	10	11	1	20	-	139
Total	3,239	7,412	6,805	7,586	7,163	1,940	1,940	4,177	1,820	1,696	3,691	286	47,755

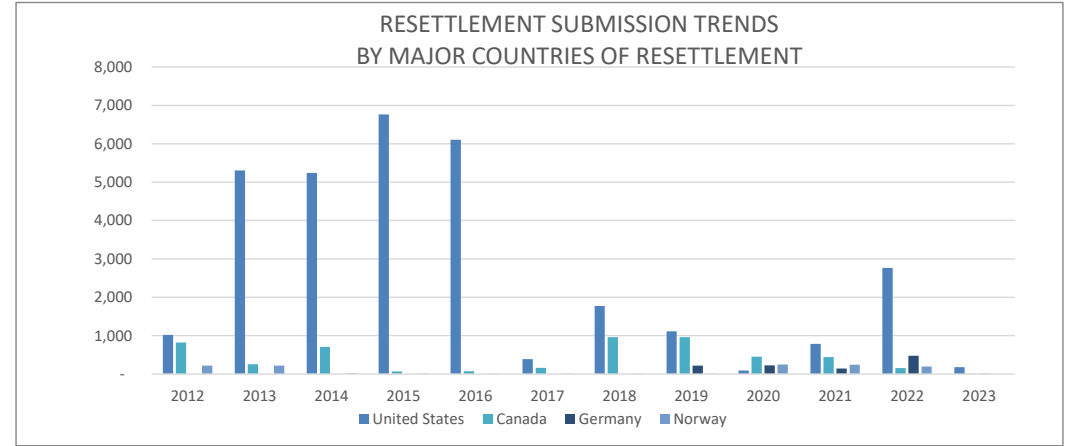
RESETTLEMENT SUBMISSION BY COUNTRY OF RESETTLEMENT

Country of Submission	2012	2013	2014	2015	2016	2017	2018	2019	2020	2021	2022	2023	Total
United States	1,019	5,304	5,239	6,764	6,105	391	1,775	1,115	90	788	2,763	176	31,529
Australia	50	932	53	107	310	736	1,438	885	281	16	40	-	4,848
Canada	821	254	705	69	75	158	963	958	451	443	152	2	5,051
Germany	-	-	-	-	-	-	-	217	226	142	476	1	1,062
United Kingdom	585	155	363	378	397	180	243	297	251	5	11	11	2,876
Sweden	402	342	397	81	262	353	120	662	38	8	3	-	2,668
Norway	218	218	12	11	5	6	1	11	249	240	197	-	1,168
Netherlands	114	145	16	130	-	-	-	7	138	40	40	96	726
France	-	29	-	-	1	88	46	11	47	10	9	-	241
Other	30	33	20	46	8	28	25	14	49	4	-	-	257
Total	3,239	7,412	6,805	7,586	7,163	1,940	4,611	4,177	1,820	1,696	3,691	286	50,426

RESETTLEMENT SUBMISSION TRENDS BY MAJOR COUNTRIES OF ORIGIN



RESETTLEMENT SUBMISSION TRENDS BY MAJOR COUNTRIES OF RESETTLEMENT



*RST submissions as at end of January 2023

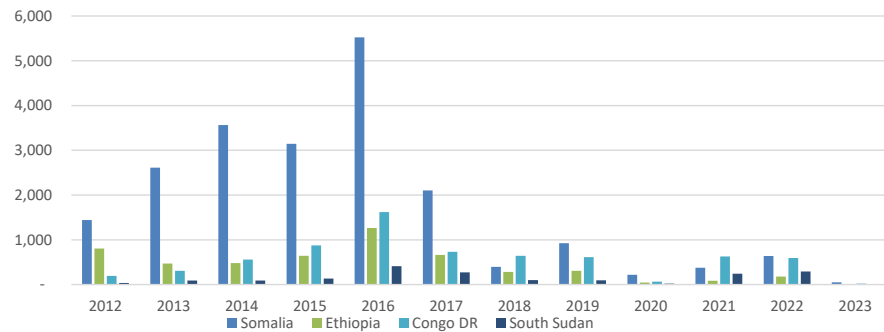
RESETTLEMENT DEPARTURES BY COUNTRY OF ORIGIN

Country of Origin	2012	2013	2014	2015	2016	2017	2018	2019	2020	2021	2022	2023	Total
Somalia	1,442	2,612	3,562	3,142	5,521	2,102	398	924	220	375	636	51	20,985
Ethiopia	806	469	480	645	1,265	663	282	309	45	87	179	8	5,238
Congo DR	192	308	560	874	1,621	730	643	611	64	630	592	22	6,847
South Sudan	35	88	92	136	412	272	100	94	19	245	293	10	1,796
Sudan	102	61	82	46	123	184	9	30	5	35	53	-	730
Eritrea	25	25	57	28	121	62	21	18	4	16	11	2	390
Burundi	14	13	23	30	70	50	81	133	22	54	51	4	545
Uganda	14	2	36	69	70	50	73	63	60	64	23	-	524
Rwanda	26	26	21	28	56	24	28	13	7	9	4	-	242
Other	3	-	-	3	27	4	6	26	12	2	-	-	83
Total	2,659	3,604	4,913	5,001	9,286	4,141	1,641	2,221	458	1,517	1,842	97	37,380

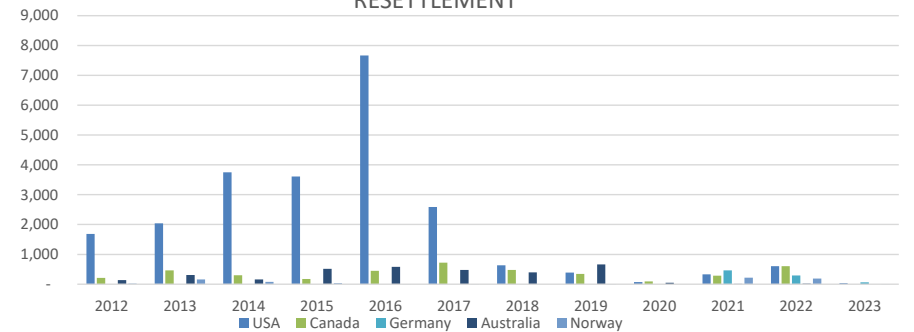
RESETTLEMENT DEPARTURES BY COUNTRY OF RESETTLEMENT

Country of Resettlement	2012	2013	2014	2015	2016	2017	2018	2019	2020	2021	2022	2023	Total
USA	1,688	2,040	3,751	3,610	7,665	2,585	633	392	74	329	607	34	23,408
Canada	213	464	302	174	452	725	480	347	93	283	602	-	4,135
Germany	-	-	-	-	-	-	-	-	-	460	295	61	816
Australia	141	311	160	514	580	475	398	666	49	14	22	-	3,330
United Kingdom	460	260	279	308	267	248	111	163	19	2	21	-	2,138
Sweden	88	331	229	341	238	83	4	596	201	131	1	1	2,244
Norway	18	159	78	32	3	7	-	2	-	219	191	1	710
Netherlands	29	-	87	2	70	-	-	5	-	30	82	-	305
France	-	-	-	-	-	1	5	25	9	26	21	-	87
Other	22	39	27	20	11	17	10	25	13	23	-	-	207
Total	2,659	3,604	4,913	5,001	9,286	4,141	1,641	2,221	458	1,517	1,842	97	37,380

RESETTLEMENT DEPARTURE TRENDS BY MAJOR COUNTRIES OF ORIGIN



RESETTLEMENT DEPARTURE TRENDS BY MAJOR COUNTRIES OF RESETTLEMENT



*RST departures as at end of January 2023

**VOLUNTARY REPATRIATION FROM KENYA
BY COUNTRY OF ORIGIN**

Country of Origin	Year														
	2010	2011	2012	2013	2014	2015	2016	2017	2018	2019	2020	2021	2022	2023	Total
Sudan	64	28	-	-	-	-	-	-	-	-	-	-	-	-	92
Burundi	1	-	4	-	-	-	-	-	586	156	60	1,024	1,255	-	3,086
Rwanda	2	2	1	-	-	-	-	-	-	-	-	-	-	-	5
Mozambique	5	-	-	-	-	-	-	4	-	-	-	-	-	-	9
Somalia	6	69	4	-	481	5,614	33,792	35,409	7,543	2,142	190	294	439	-	85,983
Congo, DRC	3	2	7	3	-	-	-	-	-	15	-	11	1	-	42
Ethiopia	-	-	-	-	-	-	-	-	1,963	5	79	761	-	-	2,808
Uganda	-	4	1	-	-	-	-	-	-	-	-	3	-	-	8
Other	2	6	-	-	-	-	6	-	1	19	-	-	-	-	34
Total	83	111	17	3	481	5,614	33,798	35,413	10,093	2,337	329	2,093	1,695	0	92,067

VolRepTrend

