



KENYA STATISTICS PACKAGE



Statistical Summary

as of
28-Feb-2021

Refugees and Asylum Seekers in Kenya

	Total Refugee & Asylum Seeker Population	Dadaab Camp	Kakuma Camp	Kalobeyei Settlement	Urban (Eldoret)	Urban (Nbi, Nak & Msa)	
A. Refugees and Asylum Seekers	512,494	224,462	163,299	41,010	2,149	81,574	- Page 2
B. Registration	6,319	0	4,976	606	41	696	- Page 6
C. Refugee Status Determination							- Page 7
1. Applied	2,067	5	1,454			608	
2. Recognized	13	0	13			0	
3. Rejected	0	0	0			0	
4. Pending	53,941	1,635	25,003			27,303	
D. 2021 Resettlement Submissions	86						- Page 8
E. 2021 Resettlement Departures	53						- Page 9
F. 2021 Voluntary Repatriation	26	0	0			26	- Page 10

SUMMARY:

The refugee and asylum-seeker population in Kenya stood at **572,494** persons as of 28 February 2021, which comprises 456,447 (89%) refugees and 53,941 (11%) asylum-seekers. This is a slight increase from the January 2021 population of 508,033. The increase is mainly due to the resumption of registration activities by the refugee Affairs Secretariat (RAS), with the support of UNHCR, in Kakuma Refugee Camp and Kalobeyei Settlement amid COVID-19, including appropriate measures to ensure the safety of staff and persons of concern. UNHCR Sub-Office Kakuma has seen a significant increase in the number of new arrivals for February compared to January, with over 1700 arriving in February. The majority of the new arrivals are from South Sudan, Burundi, and the Democratic Republic of Congo. In addition, the operation registered 1,193 newborn babies during the reporting period. Sub-Office Kakuma will, on 08 March 2021, resume KASI (Kiosk Access Services and Information) Field Posts activities where refugees can book appointments and request updates to their biodata, including phone numbers. Continuous registration activities are however still limited in urban locations due to the recommended Ministry of Health COVID-19 safety guidelines across the country.

1. Population decreases:

- **Voluntary Repatriation:** From 1 January to 31 December 2020, UNHCR and partners assisted a total of **26** persons to return to their places of origin voluntarily.
- **Resettlement:** During the reporting period, a total of **53** refugees departed to various resettlement countries.
- **Other Decreases:** Closure/Inactivation of 237 individuals during continuous registration activities.

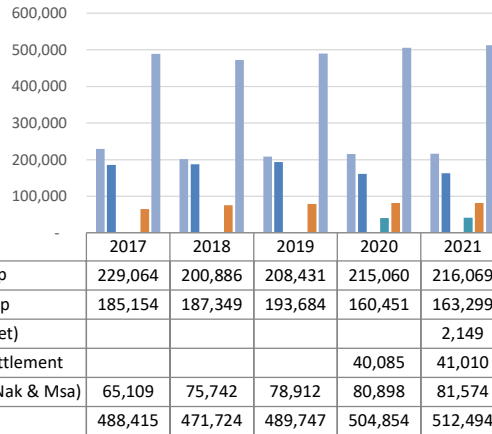
2. Population increases:

- **New registration:** A total of **3,513** individuals were registered during the reporting period, mainly new arrivals registration and additions of newly born babies in Kakuma and Dadaab Refugee Camps. Hence, the total number of persons registered since January 2020 stands at 6,319 [Camps: 5,623 and Urban: 696]. They were mainly from Burundi, DR Congo, Ethiopia, Somalia, South Sudan and Sudan. Refugee Affairs Secretariat (RAS) in Kakuma was able to resume registration activities in full after UNHCR assisted RAS to put in place a range of COVID-19 prevention measures (PPEs, screens in interview rooms, reorganised queuing, appointment system etc. In other locations, emergency and vulnerable refugees were considered on a case-by-case basis and were exceptionally registered.
- **Other Increases:** Reactivation of 395 individuals after re-establishing contact with Refugee Affairs Secretariat offices during continuous registration activities.

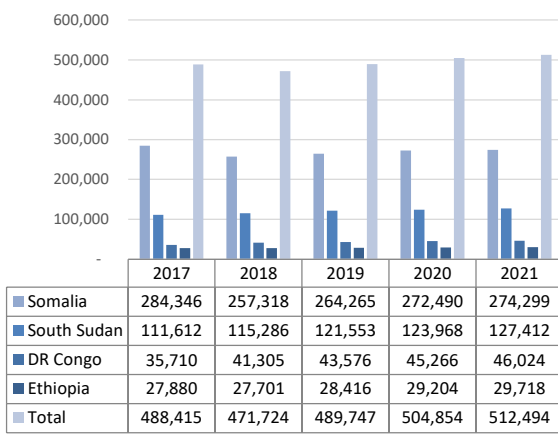
REFUGEES AND ASYLUM SEEKERS IN KENYA BY COUNTRY OF ORIGIN AND LOCATION

Country of Origin	2017				2018				2019				2020				2021						
	Dadaab Camp	Kakuma Camp	Nairobi	Total	Dadaab Camp	Kakuma Camp	Nairobi	Total	Dadaab Camp	Kakuma Camp	Urban (Nbi, Nak & Msa)	Total	Dadaab Camp	Kakuma Camp	Kalobeyei Settlement	Urban (Nbi, Nak & Msa)	Total	Dadaab Camp	Kakuma Camp	Kalobeyei Settlement	Urban (Eldoret)	Urban (Nbi, Nak & Msa)	Total
Total	238,152	185,154	65,109	488,415	208,633	187,349	75,742	471,724	217,151	193,684	78,912	489,747	223,420	160,451	40,085	80,898	504,854	224,462	163,299	41,010	2,149	81,574	512,494
Somalia	229,064	35,549	19,733	284,346	200,886	33,844	22,588	257,318	208,431	34,620	21,214	264,265	215,060	35,743	104	21,583	272,490	216,069	36,294	104	50	21,782	274,299
South Sudan	990	105,168	5,454	111,612	978	108,450	5,858	115,286	938	112,189	8,426	121,553	625	85,107	29,778	8,458	123,968	626	85,730	30,522	2,058	8,476	127,412
DR Congo	114	11,533	24,063	35,710	93	12,232	28,980	41,305	77	13,453	30,046	43,576	78	12,990	1,487	30,711	45,266	78	13,640	1,531	4	30,771	46,024
Ethiopia	7,759	10,470	9,651	27,880	6,478	10,502	10,721	27,701	7,502	10,148	10,766	28,416	7,480	5,605	5,017	11,102	29,204	7,510	5,776	5,076	1	11,355	29,718
Burundi	83	10,134	2,611	12,828	65	10,020	3,237	13,322	72	11,235	3,791	15,098	64	9,437	2,791	4,228	16,520	64	10,125	2,852	6	4,239	17,286
Sudan	53	9,789	166	10,008	46	9,879	181	10,106	46	9,700	180	9,926	24	9,550	356	179	10,109	25	9,604	357	27	186	10,199
Uganda	57	1,705	720	2,482	65	1,501	846	2,412	70	1,523	906	2,499	72	1,234	445	875	2,626	73	1,304	458	-	904	2,739
Eritrea	8	60	1,273	1,341	4	192	1,607	1,803	4	34	1,793	1,831	4	40	1	1,851	1,896	4	40	1	-	1,910	1,955
Rwanda	16	611	1,015	1,642	11	612	1,117	1,740	7	652	1,129	1,788	8	634	64	1,165	1,871	8	676	66	-	1,167	1,917
Other	8	135	423	566	7	117	607	731	4	130	661	795	5	111	42	746	904	5	110	43	3	784	945

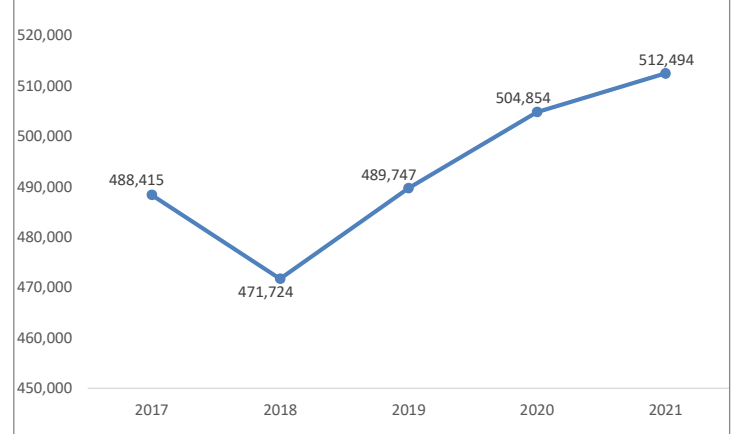
TREND BY LOCATION



TREND BY MAJOR COUNTRIES OF ORIGIN

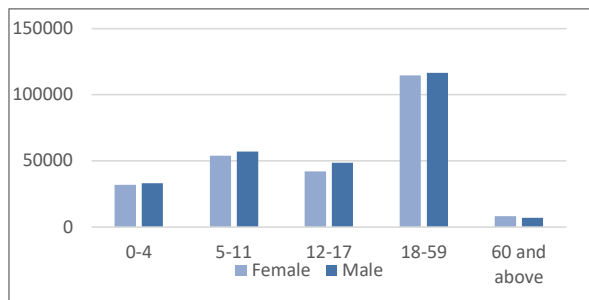


FIVE YEAR POPULATION TREND

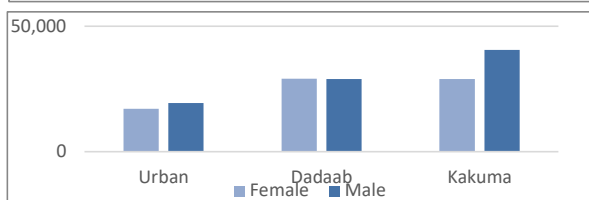


REFUGEES AND ASYLUM SEEKERS IN KENYA : DEMOGRAPHIC BREAKDOWN

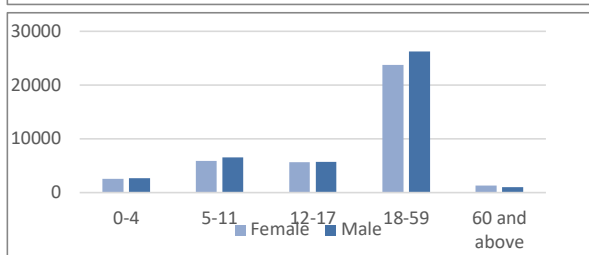
Total Kenya	Age Group	Sex				Total	
		Female		Male			
		#	%	#	%	#	%
	0-4	31,739	6.2%	33,207	6.5%	64,946	12.7%
	5-11	53,828	10.5%	57,119	11.1%	110,947	21.6%
	12-17	41,962	8.2%	48,669	9.5%	90,631	17.7%
	18-59	114,710	22.4%	116,506	22.7%	231,216	45.1%
	60 and above	7,984	1.6%	6,770	1.3%	14,754	2.9%
	Total	250,223	48.8%	262,271	51.2%	512,494	



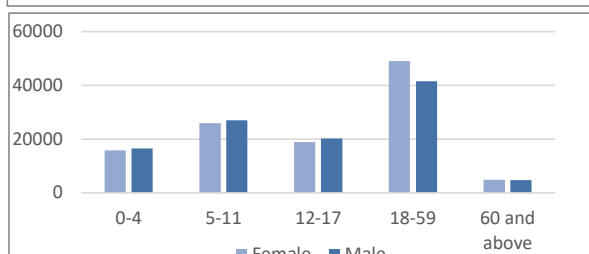
18 - 35 years	Site Name	Sex				Total	
		Female		Male			
		#	%	#	%	#	%
	Urban	17,133	10.4%	19,430	11.8%	36,563	22.3%
	Dadaab	29,090	17.7%	28,967	17.6%	58,057	35.4%
	Kakuma	28,991	17.7%	40,571	24.7%	69,562	42.4%
	Total	75,214	45.8%	88,968	54.2%	164,182	



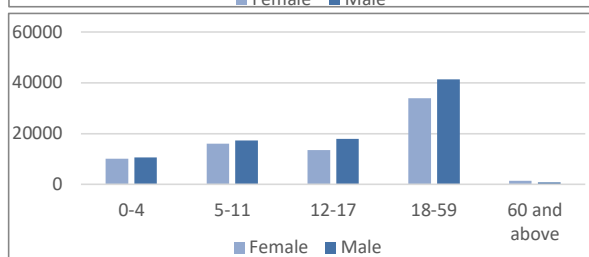
Urban (Nbi, Nak & Msa)	Age Group	Sex				Total	
		Female		Male			
		#	%	#	%	#	%
	0-4	2,591	3.2%	2,667	3.3%	5,258	6.4%
	5-11	5,924	7.3%	6,566	8.0%	12,490	15.3%
	12-17	5,684	7.0%	5,726	7.0%	11,410	14.0%
	18-59	23,780	29.2%	26,242	32.2%	50,022	61.3%
	60 and above	1,347	1.7%	1,047	1.3%	2,394	2.9%
	Total	39,326	48.2%	42,248	51.8%	81,574	



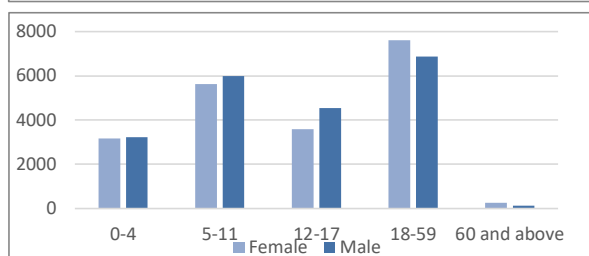
Dadaab Camp	Age Group	Sex				Total	
		Female		Male			
		#	%	#	%	#	%
	0-4	15,779	7.0%	16,576	7.4%	32,355	14.4%
	5-11	25,989	11.6%	27,073	12.1%	53,062	23.6%
	12-17	18,977	8.5%	20,202	9.0%	39,179	17.5%
	18-59	48,931	21.8%	41,438	18.5%	90,369	40.3%
	60 and above	4,788	2.1%	4,709	2.1%	9,497	4.2%
	Total	114,464	51.0%	109,998	49.0%	224,462	



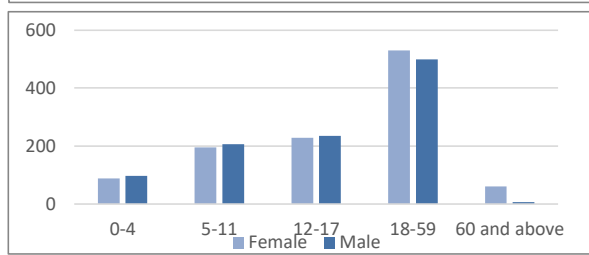
Kakuma Camp	Age Group	Sex				Total	
		Female		Male			
		#	%	#	%	#	%
	0-4	10,117	6.2%	10,642	6.5%	20,759	12.7%
	5-11	16,092	9.9%	17,279	10.6%	33,371	20.4%
	12-17	13,480	8.3%	17,965	11.0%	31,445	19.3%
	18-59	33,862	20.7%	41,458	25.4%	75,320	46.1%
	60 and above	1,525	0.9%	879	0.5%	2,404	1.5%
	Total	75,076	46.0%	88,223	54.0%	163,299	



Kalobeyei Settlement	Age Group	Sex				Total	
		Female		Male			
		#	%	#	%	#	%
	0-4	3,164	1.9%	3,225	2.0%	6,389	15.6%
	5-11	5,628	3.4%	5,994	3.7%	11,622	28.3%
	12-17	3,592	2.2%	4,540	2.8%	8,132	19.8%
	18-59	7,607	4.7%	6,869	4.2%	14,476	35.3%
	60 and above	263	0.2%	128	0.1%	391	1.0%
	Total	20,254	49.4%	20,756	50.6%	41,010	



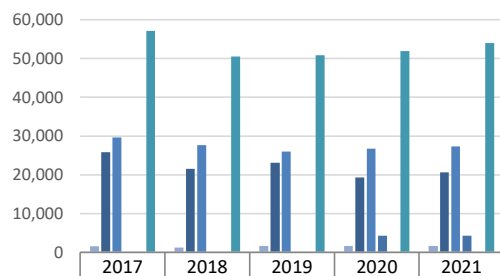
Urban (Eldoret)	Age Group	Sex				Total	
		Female		Male			
		#	%	#	%	#	%
	0-4	88	0.1%	97	0.1%	185	0.5%
	5-11	195	0.1%	207	0.1%	402	1.0%
	12-17	229	0.1%	236	0.1%	465	1.1%
	18-59	530	0.3%	499	0.3%	1,029	2.5%
	60 and above	61	0.0%	7	0.0%	68	0.2%
	Total	1,103	51.3%	1,046	48.7%	2,149	



ASYLUM SEEKERS STATISTICS BY COUNTRY OF ORIGIN AND LOCATION

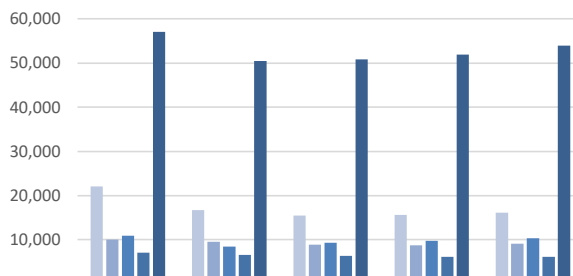
Country of Origin	2017				2018				2019				2020				2021						
	Dadaab Camp	Kakuma Camp	Nairobi	Total	Dadaab Camp	Kakuma Camp	Nairobi	Total	Dadaab Camp	Kakuma Camp	Urban (Nbi, Nak & Msa)	Total	Dadaab Camp	Kakuma Camp	Kalobeyei Settlement	Urban (Nbi, Nak & Msa)	Total	Dadaab Camp	Kakuma Camp	Kalobeyei Settlement	Urban (Eldoret)	Urban (Nbi, Nak & Msa)	Total
Total	1,599	25,837	29,589	57,025	1,292	21,517	27,657	50,466	1,657	23,161	26,028	50,846	1,630	19,337	4,272	26,695	51,934	1,635	20,601	4,359	43	27,303	53,941
DR Congo	14	4,222	17,822	22,058	8	3,465	13,246	16,719	6	4,493	10,992	15,491	8	4,299	449	10,885	15,641	7	4,727	468	4	10,932	16,138
Ethiopia	1,129	3,786	5,177	10,092	881	3,286	5,419	9,586	1,199	3,162	4,503	8,864	1,220	1,869	1,103	4,570	8,762	1,225	1,968	1,119	1	4,820	9,133
Burundi	27	8,763	2175	10,965	22	6,239	2,189	8,450	30	6,878	2,415	9,323	29	5,038	1,921	2,773	9,761	26	5,584	1,956	6	2,782	10,354
Sudan	2	7,021	63	7,086	2	6,455	67	6,524	15	6,291	52	6,358	4	5,791	267	49	6,111	4	5,813	268	27	55	6,167
Somalia	364	214	2,119	2,697	330	310	4,180	4,820	340	587	5,572	6,499	350	935	16	5,837	7,138	354	1,002	16	2	6,003	7,377
Uganda	9	1,311	533	1,853	6	1,124	439	1,569	6	1,151	452	1,609	7	873	424	485	1,789	7	939	437	-	515	1,898
Eritrea	2	15	632	649	2	158	936	1,096	2	10	950	962	2	14	1	991	1,008	2	15	1	-	1,050	1,068
Rwanda	13	400	663	1,076	7	404	681	1,092	7	465	584	1,056	8	440	64	615	1,127	8	477	66	-	613	1,164
Other	4	105	339	448	3	70	453	526	1	79	461	541	2	70	25	444	541	2	68	26	3	487	586
South Sudan	35	-	66	101	31	6	47	84	51	45	47	143	-	8	2	46	56	-	8	2	-	46	56

TREND BY LOCATION



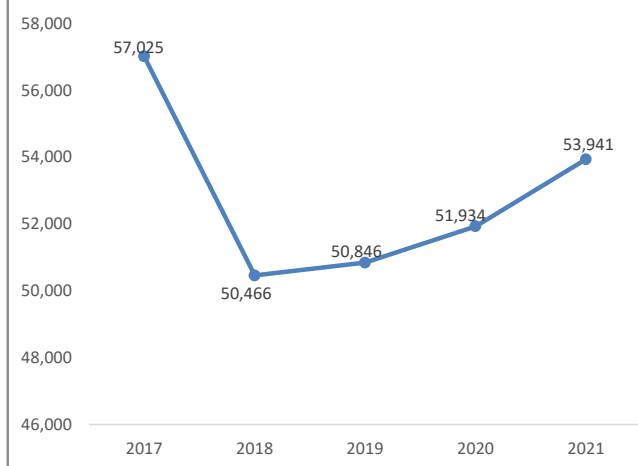
Dadaab Camp	1,599	1,292	1,657	1,630	1,635
Kakuma Camp	25,837	21,517	23,161	19,337	20,601
Urban (Nbi, Nak & Msa)	29,589	27,657	26,028	26,695	27,303
Kalobeyei Settlement			4,272	4,359	
Urban (Eldoret)					43
Total	57,025	50,466	50,846	51,934	53,941

TREND BY MAJOR COUNTRIES OF ORIGIN



DR Congo	22,058	16,719	15,491	15,641	16,138
Ethiopia	10,092	9,586	8,864	8,762	9,133
Burundi	10,965	8,450	9,323	9,761	10,354
Sudan	7,086	6,524	6,358	6,111	6,167
Total	57,025	50,466	50,846	51,934	53,941

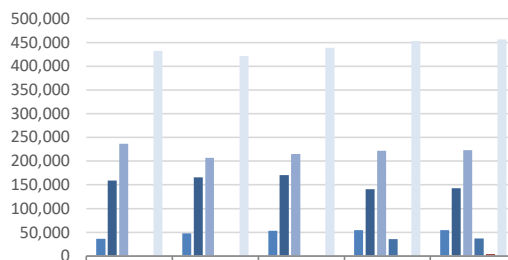
FIVE YEAR POPULATION TREND



REFUGEES IN KENYA BY COUNTRY OF ORIGIN AND LOCATION

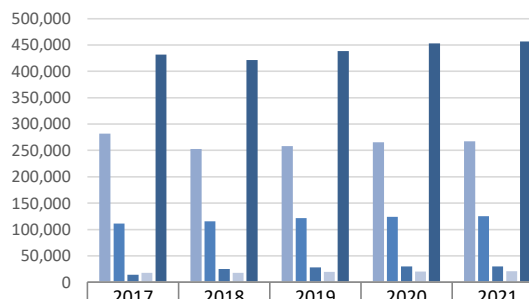
Country of Origin	2017				2018				2019				2020				2021						
	Dadaab Camp	Kakuma Camp	Nairobi	Total	Dadaab Camp	Kakuma Camp	Nairobi	Total	Dadaab Camp	Kakuma Camp	Urban (Nbi, Nak & Msa)	Total	Dadaab Camp	Kakuma Camp	Kalobeyei Settlement	Urban (Nbi, Nak & Msa)	Total	Dadaab Camp	Kakuma Camp	Kalobeyei Settlement	Urban (Eldoret)	Urban (Nbi, Nak & Msa)	Total
Total	236,553	159,317	36,122	431,992	207,341	165,832	48,085	421,258	215,494	170,523	52,884	438,901	221,790	141,114	35,813	54,203	452,920	222,827	142,698	36,651	2,106	54,271	456,447
Somalia	228,700	35,335	17,679	281,714	200,556	33,534	18,408	252,498	208,091	34,033	15,642	257,766	214,710	34,808	88	15,746	265,352	215,715	35,292	88	48	15,779	266,874
South Sudan	955	105,168	5,401	111,524	947	108,444	5,811	115,202	887	112,144	8,379	121,410	625	85,099	29,776	8,412	123,912	626	85,722	30,520	2,058	8,430	125,298
DR Congo	100	7,311	6,550	13,961	85	8,767	15,734	24,586	71	8,960	19,054	28,085	70	8,691	1,038	19,826	29,625	71	8,913	1,063	0	19,839	29,886
Ethiopia	6,630	6,684	4,558	17,872	5,597	7,216	5,302	18,115	6,303	6,986	6,263	19,552	6,260	3,736	3,914	6,532	20,442	6,285	3,808	3,957	0	6,535	20,585
Burundi	56	1,371	478	1,905	43	3,781	1,048	4,872	42	4,357	1,376	5,775	35	4,399	870	1,455	6,759	38	4,541	896	0	1,457	6,932
Sudan	51	2,768	105	2,924	44	3,424	114	3,582	31	3,409	128	3,568	20	3,759	89	130	3,998	21	3,791	89	0	131	4,032
Uganda	48	394	192	634	59	377	407	843	64	372	454	890	65	361	21	390	837	66	365	21	0	389	841
Eritrea	6	45	657	708	2	34	671	707	2	24	843	869	2	26	0	860	888	2	25	0	0	860	887
Rwanda	3	211	372	586	4	208	436	648	0	187	545	732	0	194	0	550	744	0	199	0	0	554	753
Other	4	30	130	164	4	47	154	205	3	51	200	254	3	41	17	302	363	3	42	17	0	297	359

TREND BY LOCATION



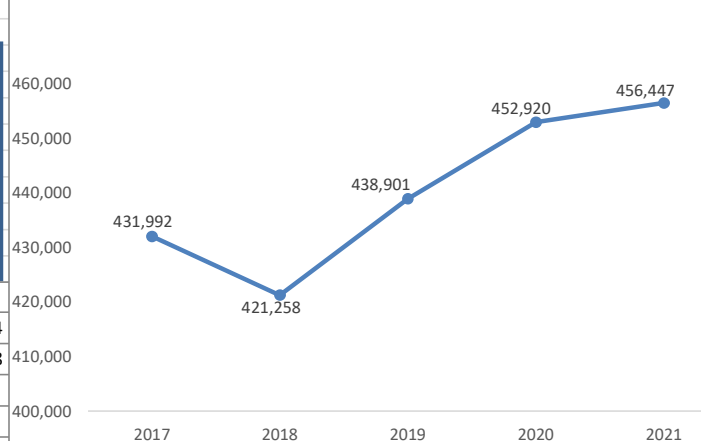
	2017	2018	2019	2020	2021
Urban (Nbi, Nak & Msa)	36,122	48,085	52,884	54,203	54,271
Kakuma Camp	159,317	165,832	170,523	141,114	142,698
Dadaab Camp	236,553	207,341	215,494	221,790	222,827
Kalobeyei Settlement				35,813	36,651
Urban (Eldoret)					2,106
Total	431,992	421,258	438,901	452,920	456,447

TREND BY MAJOR COUNTRIES OF ORIGIN



	2017	2018	2019	2020	2021
Somalia	281,714	252,498	257,766	265,352	266,874
South Sudan	111,524	115,202	121,410	123,912	125,298
DR Congo	13,961	24,586	28,085	29,625	29,886
Ethiopia	17,872	18,115	19,552	20,442	20,585
Total	431,992	421,258	438,901	452,920	456,447

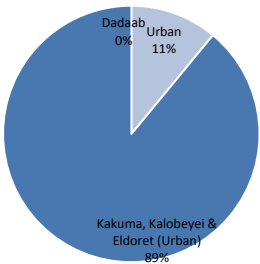
FIVE YEAR POPULATION TREND



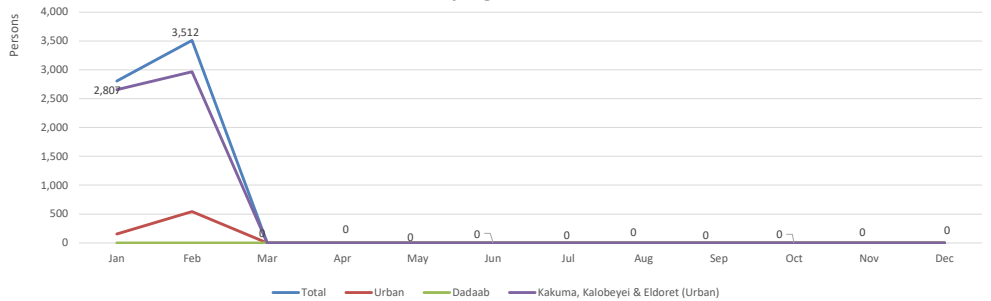
KENYA REGISTRATION TREND BY LOCATION AND COUNTRY OF ORIGIN

	Month	Total	Country of Origin																										
			AFG	ANG	BDI	BKF	CAR	COB	COD	CMR	ERT	ETH	ICO	LBR	NIG	RSA	RWA	SLE	SOM	SSD	SUD	SYR	TAN	TIB	TUR	UGA	YEM	ZIM	OTHER
Total Kenya	Jan	2,807	-	-	460	-	-	1	364	-	17	178	-	-	-	-	19	-	286	1,373	47	-	22	-	1	39	-	-	-
	Feb	3,512	-	-	294	-	-	-	387	-	43	294	-	-	-	-	24	-	417	1,918	43	-	2	20	-	69	-	1	-
	Mar	0	-	-	-	-	-	-	-	-	-	-	-	-	-	-	-	-	-	-	-	-	-	-	-	-	-	-	-
	Apr	0	-	-	-	-	-	-	-	-	-	-	-	-	-	-	-	-	-	-	-	-	-	-	-	-	-	-	-
	May	0	-	-	-	-	-	-	-	-	-	-	-	-	-	-	-	-	-	-	-	-	-	-	-	-	-	-	-
	Jun	0	-	-	-	-	-	-	-	-	-	-	-	-	-	-	-	-	-	-	-	-	-	-	-	-	-	-	-
	Jul	0	-	-	-	-	-	-	-	-	-	-	-	-	-	-	-	-	-	-	-	-	-	-	-	-	-	-	-
	Aug	0	-	-	-	-	-	-	-	-	-	-	-	-	-	-	-	-	-	-	-	-	-	-	-	-	-	-	-
	Sep	0	-	-	-	-	-	-	-	-	-	-	-	-	-	-	-	-	-	-	-	-	-	-	-	-	-	-	-
	Oct	0	-	-	-	-	-	-	-	-	-	-	-	-	-	-	-	-	-	-	-	-	-	-	-	-	-	-	-
	Nov	0	-	-	-	-	-	-	-	-	-	-	-	-	-	-	-	-	-	-	-	-	-	-	-	-	-	-	-
	Dec	0	-	-	-	-	-	-	-	-	-	-	-	-	-	-	-	-	-	-	-	-	-	-	-	-	-	-	-
	Total	6,319	0	0	754	0	0	1	751	0	60	472	0	0	0	0	43	0	703	3,291	90	0	24	20	1	108	0	1	0
Urban	Jan	151	-	-	-	-	-	-	13	-	17	56	-	-	-	1	-	29	6	6	-	22	-	1	-	-	-	-	
	Feb	545	-	-	14	-	-	-	65	-	42	209	-	-	-	2	-	155	8	-	-	-	20	-	30	-	-	-	
	Mar	0	-	-	-	-	-	-	-	-	-	-	-	-	-	-	-	-	-	-	-	-	-	-	-	-	-	-	
	Apr	0	-	-	-	-	-	-	-	-	-	-	-	-	-	-	-	-	-	-	-	-	-	-	-	-	-	-	
	May	0	-	-	-	-	-	-	-	-	-	-	-	-	-	-	-	-	-	-	-	-	-	-	-	-	-	-	
	Jun	0	-	-	-	-	-	-	-	-	-	-	-	-	-	-	-	-	-	-	-	-	-	-	-	-	-	-	
	Jul	0	-	-	-	-	-	-	-	-	-	-	-	-	-	-	-	-	-	-	-	-	-	-	-	-	-	-	
	Aug	0	-	-	-	-	-	-	-	-	-	-	-	-	-	-	-	-	-	-	-	-	-	-	-	-	-	-	
	Sep	0	-	-	-	-	-	-	-	-	-	-	-	-	-	-	-	-	-	-	-	-	-	-	-	-	-	-	
	Oct	0	-	-	-	-	-	-	-	-	-	-	-	-	-	-	-	-	-	-	-	-	-	-	-	-	-	-	
	Nov	0	-	-	-	-	-	-	-	-	-	-	-	-	-	-	-	-	-	-	-	-	-	-	-	-	-	-	
	Dec	0	-	-	-	-	-	-	-	-	-	-	-	-	-	-	-	-	-	-	-	-	-	-	-	-	-	-	
	Total	696	0	0	14	0	0	0	78	0	59	265	0	0	0	0	3	0	184	14	6	0	22	20	1	30	0	0	
Dadaab	Jan	0	-	-	-	-	-	-	-	-	-	-	-	-	-	-	-	-	-	-	-	-	-	-	-	-	-	-	
	Feb	0	-	-	-	-	-	-	-	-	-	-	-	-	-	-	-	-	-	-	-	-	-	-	-	-	-	-	
	Mar	0	-	-	-	-	-	-	-	-	-	-	-	-	-	-	-	-	-	-	-	-	-	-	-	-	-	-	
	Apr	0	-	-	-	-	-	-	-	-	-	-	-	-	-	-	-	-	-	-	-	-	-	-	-	-	-	-	
	May	0	-	-	-	-	-	-	-	-	-	-	-	-	-	-	-	-	-	-	-	-	-	-	-	-	-	-	
	Jun	0	-	-	-	-	-	-	-	-	-	-	-	-	-	-	-	-	-	-	-	-	-	-	-	-	-	-	
	Jul	0	-	-	-	-	-	-	-	-	-	-	-	-	-	-	-	-	-	-	-	-	-	-	-	-	-	-	
	Aug	0	-	-	-	-	-	-	-	-	-	-	-	-	-	-	-	-	-	-	-	-	-	-	-	-	-	-	
	Sep	0	-	-	-	-	-	-	-	-	-	-	-	-	-	-	-	-	-	-	-	-	-	-	-	-	-	-	
	Oct	0	-	-	-	-	-	-	-	-	-	-	-	-	-	-	-	-	-	-	-	-	-	-	-	-	-	-	
	Nov	0	-	-	-	-	-	-	-	-	-	-	-	-	-	-	-	-	-	-	-	-	-	-	-	-	-	-	
	Dec	0	-	-	-	-	-	-	-	-	-	-	-	-	-	-	-	-	-	-	-	-	-	-	-	-	-	-	
	Total	0	0	0	0	0	0	0	0	0	0	0	0	0	0	0	0	0	0	0	0	0	0	0	0	0	0	0	
Kakuma, Kalobeyei & Eldoret (Urban)	Jan	2,656	-	-	460	-	-	1	351	-	-	122	-	-	-	18	-	257	1,367	41	-	-	-	-	39	-	-	-	
	Feb	2,967	-	-	280	-	-	-	322	-	1	85	-	-	-	22	-	262	1,910	43	-	2	-	-	39	-	1	-	
	Mar	0	-	-	-	-	-	-	-	-	-	-	-	-	-	-	-	-	-	-	-	-	-	-	-	-	-	-	
	Apr	0	-	-	-	-	-	-	-	-	-	-	-	-	-	-	-	-	-	-	-	-	-	-	-	-	-	-	
	May	0	-	-	-	-	-	-	-	-	-	-	-	-	-	-	-	-	-	-	-	-	-	-	-	-	-	-	
	Jun	0	-	-	-	-	-	-	-	-	-	-	-	-	-	-	-	-	-	-	-	-	-	-	-	-	-	-	
	Jul	0	-	-	-	-	-	-	-	-	-	-	-	-	-	-	-	-	-	-	-	-	-	-	-	-	-	-	
	Aug	0	-	-	-	-	-	-	-	-	-	-	-	-	-	-	-	-	-	-	-	-	-	-	-	-	-	-	
	Sep	0	-	-	-	-	-	-	-	-	-	-	-	-	-	-	-	-	-	-	-	-	-	-	-	-	-	-	
	Oct	0	-	-	-	-	-	-	-	-	-	-	-	-	-	-	-	-	-	-	-	-	-	-	-	-	-	-	
	Nov	0	-	-	-	-	-	-	-	-	-	-	-	-	-	-	-	-	-	-	-	-	-	-	-	-	-	-	
	Dec	0	-	-	-	-	-	-	-	-	-	-	-	-	-	-	-	-	-	-	-	-	-	-	-	-	-	-	
	Total	5,623	0	0	740	0	0	1	673	0	1	207	0	0	0	40	0	519	3,277	84	0	2	0	0	78	0	1	0	

Registration Distribution by Location

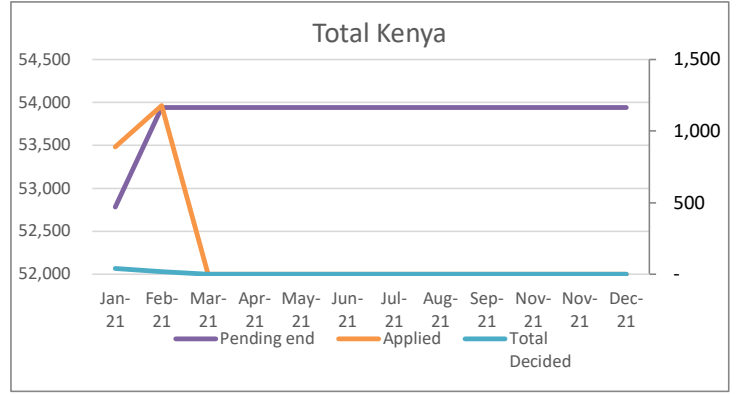


Monthly Registration Trend 2021

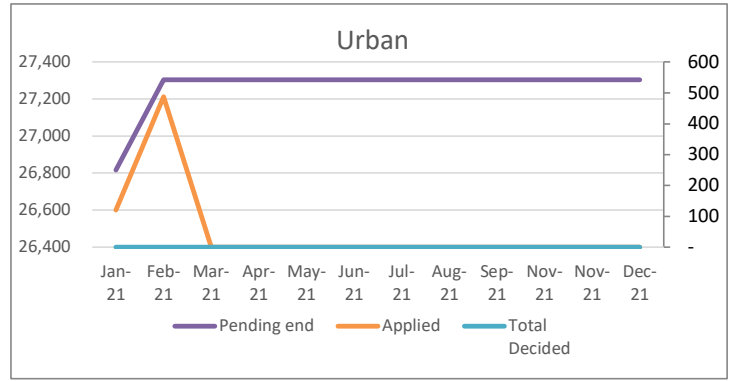


Individual Asylum Applications and Refugee Status Determination Trend

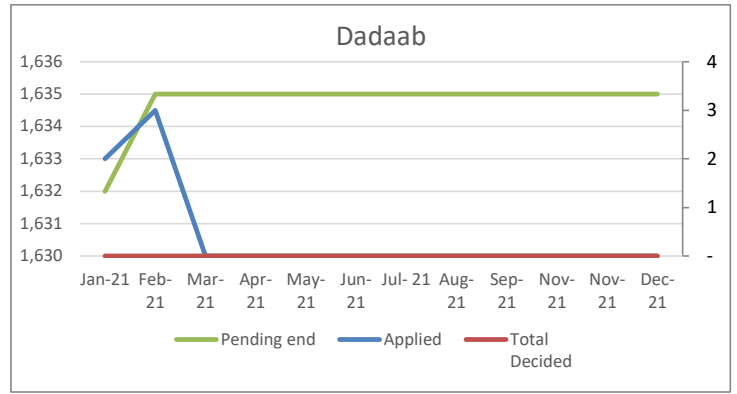
Total	Month	Pending begin	Applied	Reco-gnized	Reje-cted	Oth. Closed	Total Decided	Pending end
	Jan-21	51,934	889	13	-	28	41	52,782
	Feb-21	52,782	1,178	-	-	19	19	53,941
	Mar-21	53,941	-	-	-	-	-	53,941
	Apr-21	53,941	-	-	-	-	-	53,941
	May-21	53,941	-	-	-	-	-	53,941
	Jun-21	53,941	-	-	-	-	-	53,941
	Jul-21	53,941	-	-	-	-	-	53,941
	Aug-21	53,941	-	-	-	-	-	53,941
	Sep-21	53,941	-	-	-	-	-	53,941
	Nov-21	53,941	-	-	-	-	-	53,941
	Nov-21	53,941	-	-	-	-	-	53,941
	Dec-21	53,941	-	-	-	-	-	53,941
Total		2,067	13	-	47	60		



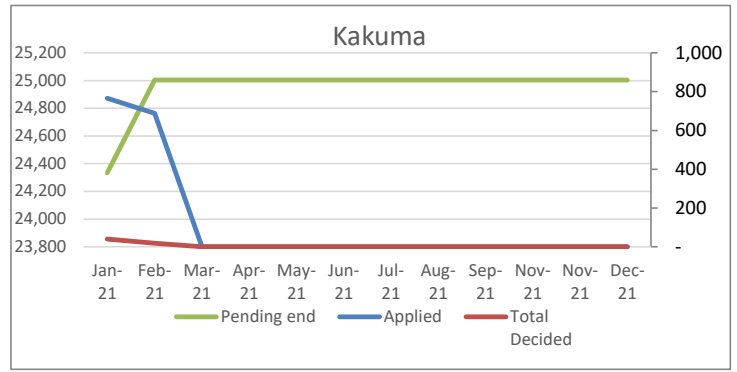
Urban	Month	Pending begin	Applied	Reco-gnized	Reje-cted	Oth. Closed	Total Decided	Pending end
	Jan-21	26,695	121	-	-	-	-	26,816
	Feb-21	26,816	487	-	-	-	-	27,303
	Mar-21	27,303	-	-	-	-	-	27,303
	Apr-21	27,303	-	-	-	-	-	27,303
	May-21	27,303	-	-	-	-	-	27,303
	Jun-21	27,303	-	-	-	-	-	27,303
	Jul-21	27,303	-	-	-	-	-	27,303
	Aug-21	27,303	-	-	-	-	-	27,303
	Sep-21	27,303	-	-	-	-	-	27,303
	Nov-21	27,303	-	-	-	-	-	27,303
	Nov-21	27,303	-	-	-	-	-	27,303
	Dec-21	27,303	-	-	-	-	-	27,303
Total		608	-	-	-	-	-	



Dadaab	Month	Pending begin	Applied	Reco-gnized	Reje-cted	Oth. Closed	Total Decided	Pending end
	Jan-21	1,630	2	-	-	-	-	1,632
	Feb-21	1,632	3	-	-	-	-	1,635
	Mar-21	1,635	-	-	-	-	-	1,635
	Apr-21	1,635	-	-	-	-	-	1,635
	May-21	1,635	-	-	-	-	-	1,635
	Jun-21	1,635	-	-	-	-	-	1,635
	Jul-21	1,635	-	-	-	-	-	1,635
	Aug-21	1,635	-	-	-	-	-	1,635
	Sep-21	1,635	-	-	-	-	-	1,635
	Nov-21	1,635	-	-	-	-	-	1,635
	Nov-21	1,635	-	-	-	-	-	1,635
	Dec-21	1,635	-	-	-	-	-	1,635
Total		5	-	-	-	-	-	

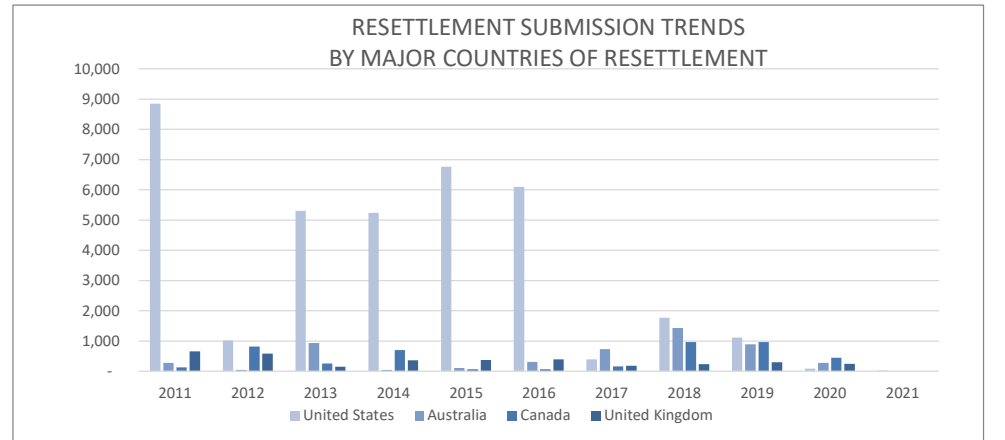
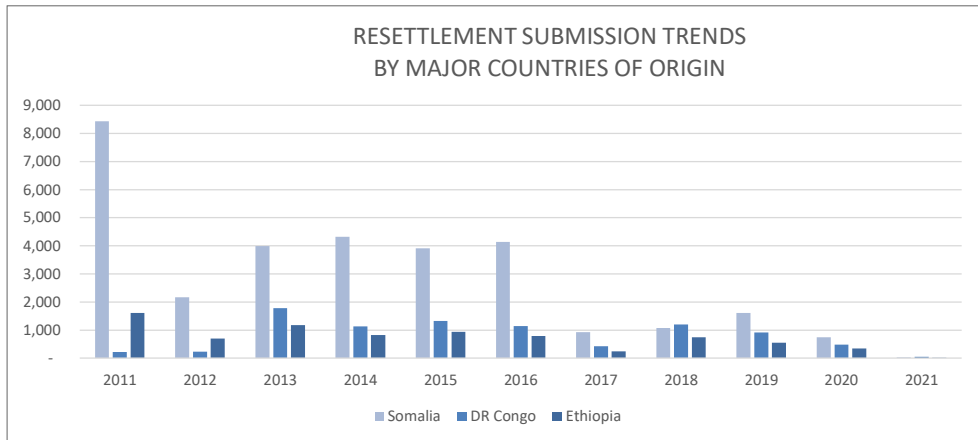


Kakuma, Kalobeyei & Eldoret	Month	Pending begin	Applied	Reco-gnized	Reje-cted	Oth. Closed	Total Decided	Pending end
	Jan-21	23,609	766	13	-	28	41	24,334
	Feb-21	24,334	688	-	-	19	19	25,003
	Mar-21	25,003	-	-	-	-	-	25,003
	Apr-21	25,003	-	-	-	-	-	25,003
	May-21	25,003	-	-	-	-	-	25,003
	Jun-21	25,003	-	-	-	-	-	25,003
	Jul-21	25,003	-	-	-	-	-	25,003
	Aug-21	25,003	-	-	-	-	-	25,003
	Sep-21	25,003	-	-	-	-	-	25,003
	Nov-21	25,003	-	-	-	-	-	25,003
	Nov-21	25,003	-	-	-	-	-	25,003
	Dec-21	25,003	-	-	-	-	-	25,003
Total		1,454	13	-	47	60		



RESETTLEMENT SUBMISSION BY COUNTRY OF ORIGIN												
Country of Origin	2011	2012	2013	2014	2015	2016	2017	2018	2019	2020	2021	Total
Somalia	8,439	2,170	3,985	4,325	3,909	4,147	929	1,068	1,605	740	27	31,344
DR Congo	218	230	1,783	1,132	1,326	1,143	424	1,203	916	484	45	8,904
Ethiopia	1,617	700	1,181	830	941	785	237	748	553	337	8	7,937
South Sudan	-	33	214	111	420	701	143	1,229	754	152	-	3,757
Sudan	175	30	29	158	541	104	4	34	3	2	-	1,080
Uganda	13	5	24	88	108	107	47	136	191	12	2	733
Burundi	17	22	58	46	121	81	100	121	104	60	-	730
Eritrea	25	20	111	73	116	55	26	39	36	12	-	513
Rwanda	13	24	22	31	78	26	10	17	15	10	4	250
Other	1	5	5	11	26	14	20	16	10	11	-	119
Total	10,518	3,239	7,412	6,805	7,586	7,163	1,940	4,611	4,187	1,820	86	55,367

RESETTLEMENT SUBMISSION BY COUNTRY OF RESETTLEMENT												
Country of Submission	2011	2012	2013	2014	2015	2016	2017	2018	2019	2020	2021	Total
United States	8,849	1,019	5,304	5,239	6,764	6,105	391	1,775	1,115	90	25	36,676
Australia	281	50	932	53	107	310	736	1,438	890	281	-	5,078
Canada	129	821	254	705	69	75	158	963	963	451	1	4,589
United Kingdom	657	585	155	363	378	397	180	243	297	251	1	3,507
Sweden	391	402	342	397	81	262	353	120	662	38	1	3,049
Norway	72	218	218	12	11	5	6	1	11	249	39	842
Netherlands	109	114	145	16	130	-	-	-	7	138	7	666
France	-	-	29	-	-	1	88	46	11	47	8	230
Other	24	16	17	6	17	2	28	25	220	275	4	634
Denmark	6	14	16	14	29	6	-	-	11	-	-	96
Total	10,518	3,239	7,412	6,805	7,586	7,163	1,940	4,611	4,187	1,820	86	55,367



* RST submissions as at end of January '2021*

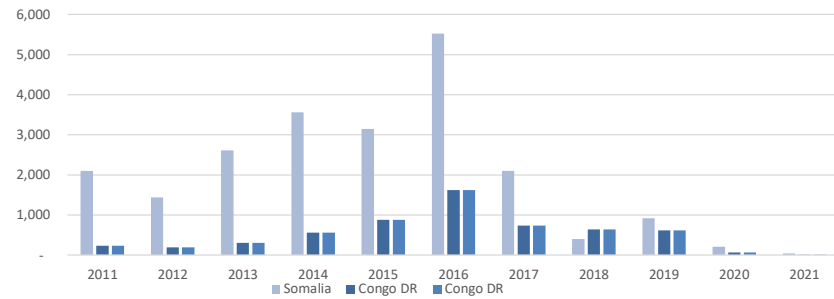
RESETTLEMENT DEPARTURES BY COUNTRY OF ORIGIN

Country of Origin	2011	2012	2013	2014	2015	2016	2017	2018	2019	2020	2021	Total
Somalia	2,102	1,442	2,612	3,562	3,142	5,521	2,102	398	916	211	38	22,046
Ethiopia	906	806	469	480	645	1,265	663	282	309	45	1	5,871
Congo DR	234	192	308	560	874	1,621	730	643	611	64	1	5,838
SSD	-	35	88	92	136	412	272	100	94	19	11	1,259
Sudan	213	102	61	82	46	123	184	9	30	5	-	855
Eritrea	48	25	25	57	28	121	62	21	18	4	1	410
Burundi	35	14	13	23	30	70	50	81	133	22	-	471
Uganda	7	14	2	36	69	70	50	73	63	60	1	445
Rwanda	35	26	26	21	28	56	24	28	13	7	-	264
Other	1	3	-	-	3	27	4	6	26	6	-	76
Total	3,581	2,659	3,604	4,913	5,001	9,286	4,141	1,641	2,213	443	53	37,535

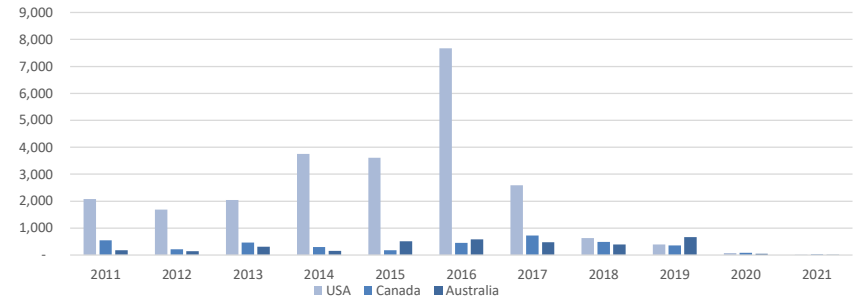
RESETTLEMENT DEPARTURES BY COUNTRY OF RESETTLEMENT

Country of Resettlement	2011	2012	2013	2014	2015	2016	2017	2018	2019	2020	2021	Total
USA	2,083	1,688	2,040	3,751	3,610	7,665	2,585	633	392	73	1	24,521
Canada	541	213	464	302	174	452	725	480	356	79	19	3,805
Australia	182	141	311	160	514	580	475	398	666	49	1	3,477
United Kingdom	208	460	260	279	308	267	248	111	163	19	-	2,323
Sweden	329	88	331	229	341	238	83	4	579	201	32	2,455
Norway	58	18	159	78	32	3	7	-	2	-	-	357
Netherlands	81	29	-	87	2	70	-	-	5	-	-	274
Other	89	12	13	20	13	2	7	15	50	22	-	243
Denmark	-	10	22	7	7	4	-	-	-	-	-	50
New Zealand	10	-	4	-	-	5	11	-	-	-	-	30
Total	3,581	2,659	3,604	4,913	5,001	9,286	4,141	1,641	2,213	443	53	37,535

RESETTLEMENT DEPARTURE TRENDS BY MAJOR COUNTRIES OF ORIGIN



RESETTLEMENT DEPARTURE TRENDS BY MAJOR COUNTRIES OF RESETTLEMENT



* RST departures as at end of January 2021

**VOLUNTARY REPATRIATION FROM KENYA
BY COUNTRY OF ORIGIN**

Country of Origin	Year													Total
	2009	2010	2011	2012	2013	2014	2015	2016	2017	2018	2019	2020	2021	
Sudan	665	64	28	-	-	-	-	-	-	-	-	-	-	757
Burundi	2	1	-	4	-	-	-	-	-	586	156	60	15	824
Rwanda	1	2	2	1	-	-	-	-	-	-	-	-	-	6
Mozambique	-	5	-	-	-	-	-	-	4	-	-	-	-	9
Somalia	-	6	69	4	-	481	5,614	33,792	35,409	7,543	2,142	190	-	85,250
Congo, DRC	-	3	2	7	3	-	-	-	-	-	15	-	11	41
Ethiopia	-	-	-	-	-	-	-	-	-	1,963	5	79	-	2,047
Uganda	-	-	4	1	-	-	-	-	-	-	-	-	-	5
Other	-	2	6	-	-	-	-	6	-	1	19	-	-	34
Total	668	83	111	17	3	481	5,614	33,798	35,413	10,093	2,337	329	26	88,973

VolRepTrend

