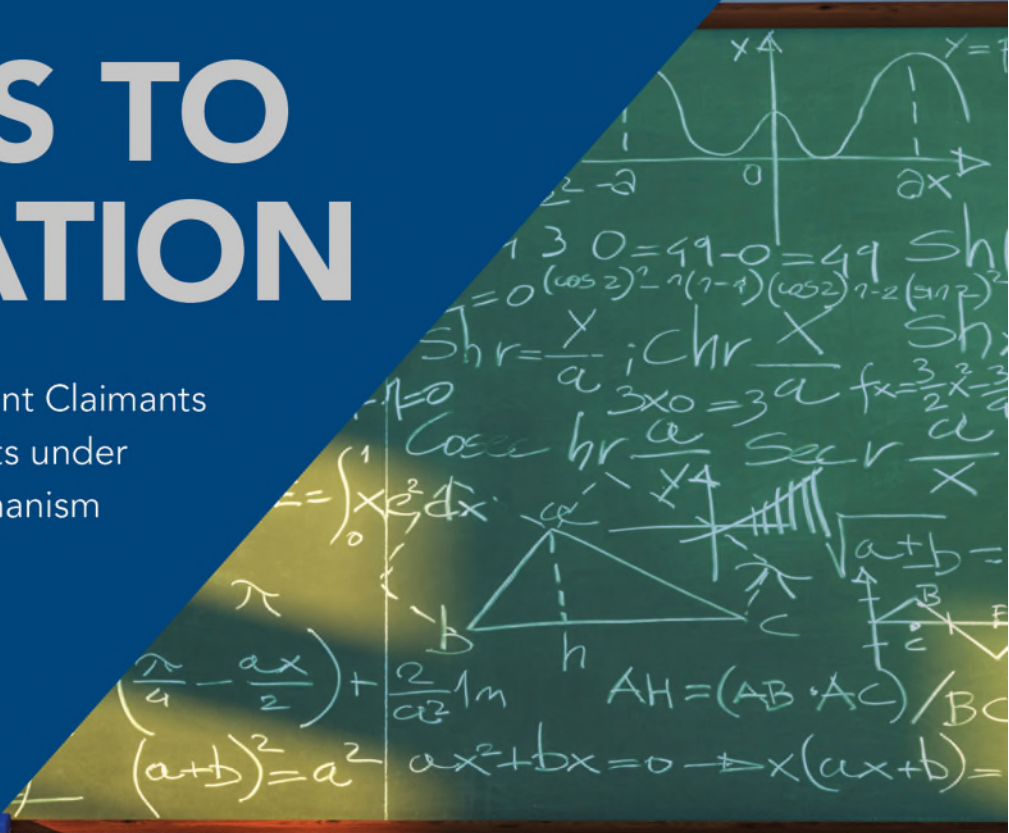


ACCESS TO EDUCATION

A Guide for Non-refoulement Claimants
and Substantiated Claimants under
the Unified Screening Mechanism
in Hong Kong



IN COLLABORATION WITH

MAYER | BROWN

Notice

The content of this Guide is based on open source research and interviews conducted by Mayer Brown with individuals and non-governmental organisations with practical experience relating to access to education in Hong Kong.

This Guide does not provide exhaustive information on the subject matter covered and does not constitute legal advice.

You may not copy or modify the contents of this Guide or use them for any purpose other than to share copies with non-refoulement and substantiated claimants interested in seeking access to education in Hong Kong or organisations assisting such individuals.

Acknowledgements

This Guide was prepared by Mayer Brown, on a pro bono basis, in collaboration with the UNHCR Sub-Office in Hong Kong.

In preparing this Guide, the authors benefited immensely from their interviews and conversations including with those listed below and others who wished to remain anonymous. UNHCR would like to thank all those involved for their time and effort in assisting with this project:

- Branches of Hope
- Centre for Refugees
- Learning Together
- Mayer Brown
- Refugee Concern Network
- Refugee Union
- RUN Hong Kong
- The Hong Kong Society for Asylum Seekers and Refugees
- Pritika Bhat, Welfare Officer, Justice Centre Hong Kong
- Aime Girimana, Community Outreach Officer, Justice Centre Hong Kong
- Patricia Ho, Principal Lecturer at the Law Faculty of The University of Hong Kong, Founder of Hong Kong Dignity Institute
- Gordon Mathews, Professor, Department of Anthropology, The Chinese University of Hong Kong
- Nick Rothwell, Kellett Outreach Director
- Omar Shahnawaz
- Tegan Smyth, Grassroots Future

Table of Contents

PART 1. INTRODUCTION AND GENERAL POINTS.....	8
Background.....	8
Who may find this Guide useful?.....	8
What does this Guide cover?.....	8
General points for all Applicants.....	9
Where to seek further assistance?.....	10
PART 2. KINDERGARTEN EDUCATION	11
Overview	11
Start of term.....	11
Public or private.....	11
Medium of instruction	11
Entrance interviews or tests	12
Application Process	12
When to submit applications?	12
Application to the EDB.....	12
Application to kindergarten.....	13
Offers from kindergartens	13
Changing kindergarten before graduation.....	13
School fees and financial assistance	13
Kindergarten application flowchart.....	15
PART 3. INITIATION PROGRAMME AND INDUCTION PROGRAMME.....	16
Initiation Programme.....	16
Induction Programme.....	16
Application Process	16
PART 4. PRIMARY AND SECONDARY SCHOOL EDUCATION	17
Overview	17
Start of term.....	17
Public or private.....	17
Medium of instruction	18
Entrance interviews or tests	18
Application Process	18
When to submit applications?	18
Application to primary or secondary school.....	18
School fees and financial assistance	19
Primary and secondary school application flowchart.....	20
PART 5. POST-SECONDARY SCHOOL EDUCATION	21
Overview	21
Types of post-secondary qualifications	21
Start of term.....	22

Medium of instruction	23
Entrance interviews or tests	23
Application Process	23
When to submit applications?	23
Application to Public Institution or Private Institution.....	23
Application to the ImmD.....	24
School fees and financial assistance	26
Post-secondary programme application flowchart	27
ANNEX A. LETTER OF NO OBJECTION FROM THE EDB	28
ANNEX B. LIST OF PUBLIC INSTITUTIONS (POST-SECONDARY).....	30
ANNEX C. LIST OF PRIVATE INSTITUTIONS (POST-SECONDARY)	34
ANNEX D. LIST OF USEFUL RESOURCES.....	42

Glossary

We have used short forms in this Guide for which meanings are set out in the table below. Many of the short forms are also used in publicly available materials regarding education in Hong Kong.

Short form	Meaning
AP	Admission pass issued by the EDB for kindergarten registration.
Applicant(s)	Individual(s) who have been issued a Recognizance Document (Form 8).
CMI	Chinese medium of instruction.
DSS	Direct Subsidy Scheme.
EDB	Education Bureau of the HK Government.
EDB NOL	Letter of no objection issued by the EDB that is required for entry into an Applicant's first school in Hong Kong (kindergarten, primary or secondary school only).
EMI	English medium of instruction.
EOC	Equal Opportunities Commission, an independent statutory body tasked to enforce anti-discrimination laws in Hong Kong including the Race Discrimination Ordinance (Cap. 602).
Guide	This document.
HK Government	The Government of the Hong Kong Special Administrative Region of the People's Republic of China.
HKDSE	Hong Kong Diploma of Secondary Education.
ImmD	Immigration Department of the HK Government.
ImmD NOL	Letter of no objection issued by the ImmD for a specific programme in a post-secondary educational institution in Hong Kong.
Induction Programme	Refer to Part 3 of this Guide.
Initiation Programme	Refer to Part 3 of this Guide.
JUPAS	Joint University Programmes Admissions System.
MOI	Medium of instruction in schools.
NCS	Non-Chinese speaker.
NGO(s)	Non-governmental organisation(s).

Short form	Meaning
POA	Primary One Admission.
RC	Registration certificate issued by the EDB for kindergarten registration.
Recognizance Document (Form 8)	Document issued by the ImmD to non-refoulement claimants pursuant to the Immigration Ordinance (Cap. 115).
Remission Scheme	Kindergarten and Child Care Centre Fee Remission Scheme.
SFO	Student Finance Office, Working Family and Student Financial Assistance Agency.
SSPA	Secondary School Places Allocation.
UNHCR	United Nations High Commissioner for Refugees. References to the UNHCR in this Guide refer to the UNHCR Sub-Office in Hong Kong.
USM	Unified Screening Mechanism operated by the HK Government to determine claims for non-refoulement protection.

PART 1. INTRODUCTION AND GENERAL POINTS



Background

In Hong Kong, non-refoulement claimants go through the Unified Screening Mechanism (**USM**) to determine their non-refoulement claims against expulsion, return or surrender from Hong Kong to another country on all applicable grounds. This process can take several years. During this period, non-refoulement claimants are issued a form of recognizance by the Immigration Department of the Hong Kong Government (**ImmD**) which contains conditions that the non-refoulement claimant must comply with while in Hong Kong. This document is known as a '**Recognizance Document (Form 8)**'.



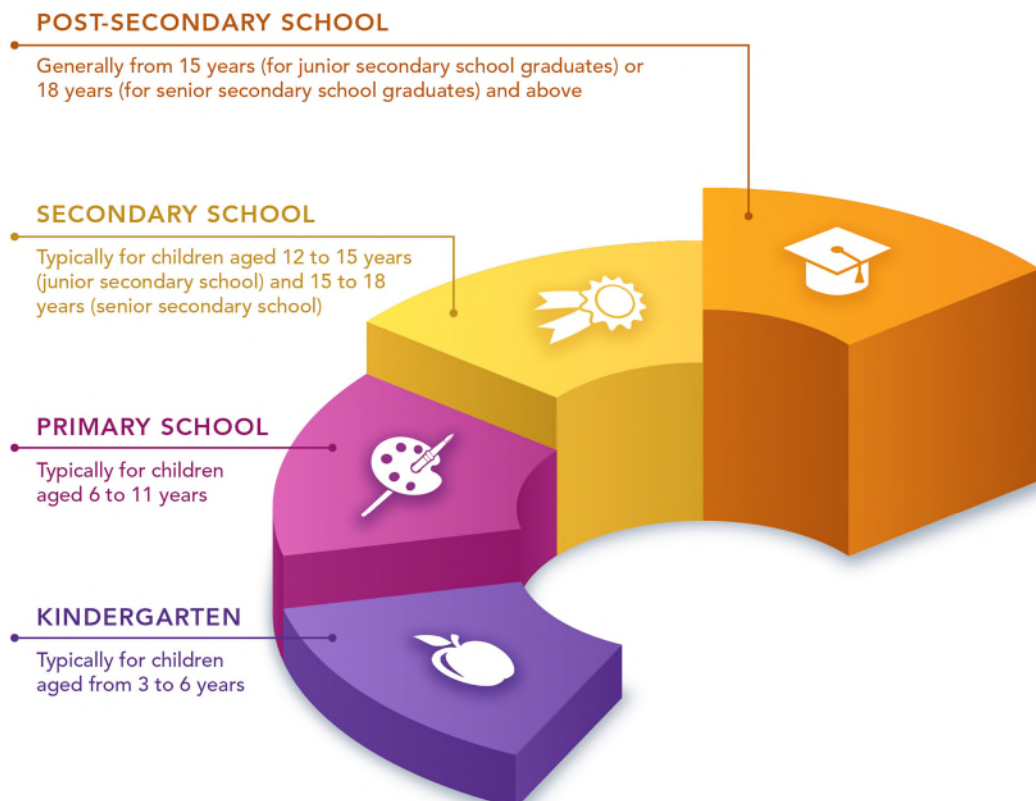
Who may find this Guide useful?

This Guide aims to provide practical, user-friendly information to help holders of a Recognizance Document (Form 8) who are seeking access to education in Hong Kong. In this Guide, we collectively refer to these individuals as an '**Applicant**' or '**Applicants**'.



What does this Guide cover?

This Guide provides an overview of the education framework and application process for all school bands in Hong Kong as follows:



This Guide also contains a chapter on the **Initiation Programme** and **Induction Programme**. These are optional programmes run by certain schools or NGOs to help newly arrived non-Chinese speaking (**NCS**) children, from ages 6 to 18, to integrate into the local education system.

Given the variety of public and private-sector education options in Hong Kong, it is not possible for this Guide to cover the application requirements of every school. This Guide focuses mainly on the application requirements of government and aided schools and only provides high-level information for private-sector school options. If the Applicant is seeking admission in a private sector school, we recommend that the Applicant contact such school's administration office directly for the admission process.

In addition to reading this Guide, it is important to refer to the available primary sources of information as at the time of application. This includes guidance issued by the Education Bureau (**EDB**) of the Government of the Hong Kong Special Administrative Region (**HK Government**) and admission information issued by specific schools. This would ensure that the Applicant has up-to-date information for specific requirements to be followed in school applications.

This Guide does not cover admission requirements for Applicants with special education needs. Parents should inform the EDB if the Applicant has any special education needs so that these factors can be considered in the school placement process. Please refer to the EDB's website for more information on this topic: <https://sense.edb.gov.hk/en/index.html>

General points for all Applicants

The below points apply to Applicants of all school bands:

1. **Which school band to apply for?** This Guide assumes that Applicants fall within the age group of the school band in question and would apply to the school level that matches their age. However, this will not always be the case owing to personal circumstances of Applicants and potential difficulties in transferring prior education experience and qualifications obtained from another country. For example, the Applicant's education may have been interrupted in the Applicant's country of origin and the Applicant may be older than the recommended age in Hong Kong. Entry into a school level that does not correspond with the Applicant's age is possible in some cases - this would usually require additional communication with the EDB and the school involved.
2. **Letter of no objection.** Besides applying to the schools involved, Applicants must obtain a letter of no objection to study in Hong Kong.

For kindergarten to secondary school students, this application is made through the EDB when the Applicant applies to attend his/her first school in Hong Kong (**EDB NOL**).

For post-secondary school education, a letter of no objection must be sought from the ImmD to cover the specific course of study (**ImmD NOL**).

It should be noted that the admission to a school in Hong Kong will not affect the outcome of the assessment of the Applicant's USM claim and should not be construed as permission from the Director of Immigration for the Applicant to remain in Hong Kong. In addition, the admission of an Applicant to a school does not give rise to an undertaking by the Director of Immigration that removal proceedings will not be instituted or continued.

3. **Duration of stay in Hong Kong.** It is assumed that Applicants expect to remain in Hong Kong for the duration of the school band (e.g. all of kindergarten or all of primary school). It is generally difficult for Applicants to receive permission from the ImmD to study in Hong Kong if the Applicant will be subject to deportation in the short term.
4. **Applicants are not 'local students'.** Applicants are not regarded as 'local students' or 'Hong Kong residents' for the purpose of school admissions. Therefore, the application process for Applicants differs from local students.

Applicants may have to explain their prior education qualifications and immigration status¹ to school admission staff in Hong Kong who may not be familiar with such arrangements. This may take time. It is advisable to submit admission applications as early as possible to ensure there is sufficient time to obtain additional documentation and provide replies to questions from the EDB, the ImmD or the school before the application deadline.

5. **Follow up if there is no response.** Applicants should keep track of the timeline of their applications and follow up with the relevant body (e.g. the EDB, the ImmD or the school) if they do not receive a response within the time specified (if any) or a reasonable time. This is to avoid the risk of missing application deadlines and having to commence studies later as a result.
6. **Change of home address.** If there is a change of home address during the application process, parents must update the EDB or the school involved as soon as possible to ensure they receive correspondence at the new address.



Where to seek further assistance?

There is a lot of information available on the EDB's website on education issues in Hong Kong. A list of general resources is set out in [Annex D](#) of this Guide for reference.

For in-person assistance on applications to kindergarten, primary school or secondary school, Applicants may visit their nearest EDB Regional Education Office. There are four EDB Regional Education Offices covering Hong Kong Island, Kowloon, New Territories East and New Territories West.²

For queries relating to post-secondary programmes, Applicants are encouraged to consult the college or university directly.

NGOs that offer education-related services may also be able to provide further information and assistance to Applicants.

¹ The Hong Kong Council for Accreditation of Academic & Vocational Qualifications (HKCAAVQ) provides education equivalency assessment services for a charge (HK\$2,835 for "general purposes"). However, such services require the assessed qualification to be completed and recognised as a part of the home country's national education system and of sufficient volume, e.g. more than a year of full-time study. Supporting documents, such as ID card or passport, graduate certificates, official transcripts, syllabus etc., are also required for the assessment. For further information, please visit: <https://portal.hkcaavq.edu.hk/process-of-assessment>

² Please refer to the following website for a list of EDB Regional Education Offices and phone numbers for telephone enquiries for each district: <https://www.edb.gov.hk/en/contact-us/reo.html>

PART 2. KINDERGARTEN EDUCATION

Overview

Kindergartens, including kindergarten-cum-child care centres, provide education for children aged 3 to 6 years old in Hong Kong. The EDB has described kindergarten education as helpful for a child's physical, social and intellectual development and it lays the foundation for future learning.

The minimum age for children starting kindergarten in September each year is 2 years 8 months.

Most kindergartens offer:

- nursery classes (**K1**) for children of 3+ years of age;
- lower kindergarten (**K2**) for children of 4+ years of age; and
- upper kindergarten (**K3**) for children of 5+ years of age.

Both half-day or full-day classes are available. Priority for full-day kindergarten programmes is typically given to parents who have a genuine need for them. For example, working parents or families with other caring responsibilities such as families who need to take care of persons with disabilities at home.

The EDB issues information around September each year setting out in detail the admission requirements for kindergartens that are part of the HK Government's kindergarten education scheme³ (**Scheme**) and non-Scheme kindergartens who join the EDB's K1 admission process. This process is summarised in the following sections.

If parents of Applicants do not have a specific kindergarten in mind, the easiest way to enrol would be for the parents to visit an EDB Regional Education Office with the required documents to request for the EDB's suggestions for kindergarten enrolment. In addition, Applicants must obtain a kindergarten admission pass before applying to Scheme kindergartens and an EDB NOL.

Start of term

Kindergarten term starts in August/September and runs through to June/July of the next year.

Public or private

All kindergartens in Hong Kong are privately run. They are either non-profit-making kindergartens or private independent kindergartens, depending on their sponsoring organisations which can be either voluntary agencies or private enterprises.

Medium of instruction

Given the wide variety of kindergartens in Hong Kong, the language of instruction varies from school to school. Many Scheme kindergartens offer Chinese as the main medium of instruction. The EDB

³ Kindergartens that join the Scheme receive subsidies from the HK Government for the provision of 3-year half-day kindergarten education for eligible children. Such children must have the right of abode, right to land or valid permission to remain in Hong Kong without any condition of stay (other than the limit of stay). Applicants are not eligible for such subsidies.

encourages parents to send their children to kindergartens with an immersed Chinese language environment as early as possible to facilitate their learning of Chinese.

Entrance interviews or tests

Kindergartens may require Applicants to undergo interviews as part of the admission process. These interviews typically take place in November of the year before the start of kindergarten. If the Applicant is an NCS, the interview will be conducted in English, with the help of an interpreter, or a Chinese-speaking friend or relative. The parents of the Applicant may be allowed to accompany the Applicant during the interview.



Application Process

Applicants need to submit multiple applications to the EDB and the kindergartens of interest in parallel at the same time. More details are provided below on each of these applications.

When to submit applications?

For newly arrived Applicants who may be applying for a kindergarten outside of the standard application period, parents should approach the nearest EDB Regional Education Office as soon as practicable for assistance.

For Applicants who arrived in Hong Kong earlier, parents should follow the kindergarten application cycle that starts in September the year before the start of kindergarten, i.e. 1 year in advance.

Application to the EDB

Applicants need to apply to the EDB for (i) the EDB NOL; and (ii) a kindergarten admission pass (**AP**).

The first step is for Applicants to apply for the EDB NOL if the Applicant does not have this document. This process is as set out in [Annex A](#) of this Guide.

From September to November the year **before** the start of the kindergarten programme, i.e. one year in advance, parents should also separately apply for an AP by submitting an application to the EDB for the 'Registration Certificate for Kindergarten Admission' (**RC**).

Details on the RC application process are typically issued by the EDB on their website around September each year. The application forms may be downloaded from the EDB's website or obtained from District Offices, Post Offices and EDB Regional Education Offices. Completed application forms may be submitted online or by post.

The RC application process, if approved, will result in the issuance of an RC or AP, depending on the Applicant's status in Hong Kong. The EDB will issue an AP if the child is not eligible to receive a subsidy under the Scheme. Applicants will therefore receive APs if the RC application is approved.

The EDB will generally take 6 to 8 weeks to process the RC application and if approved, will issue the AP to the Applicant by post.

The AP will be valid up to the end of the permitted period for the Applicant to remain in Hong Kong, or the completion of kindergarten, whichever is earlier.

Application to kindergarten

Kindergartens application forms are typically made available either in person at the school or online. Kindergartens usually provide admission information in English and Chinese.

Each kindergarten provides their application forms and a list of their application requirements. Parents are required to submit the kindergarten application form and supporting documents to **each** kindergarten directly.

Applicants may apply to more than one kindergarten to assess the offers received before selecting one kindergarten to enrol with. However, there may be application fees payable for each kindergarten application. For kindergartens that are part of the Scheme, application fees for admission in the 2022/2023 school year were capped at HK\$40 – this information may change without prior notice and should be checked before the application is made.

Offers from kindergartens

Kindergartens typically inform the Applicants of the outcome of their application to the school around mid-December in the year **before** the Applicant starts school.

If successful, the Applicant should register with one kindergarten in early January, **during the EDB Centralised Registration Dates** – which typically last for three days in early January – by submitting the AP and paying the kindergarten registration fee to the school. While applications can be made to multiple kindergartens, Applicants can only **register** with one Scheme kindergarten.

If the application to the preferred kindergarten is unsuccessful, Applicants should refer to the K1 vacancy information released by the EDB **after** the EDB Centralised Registration Dates and apply to alternative kindergartens in late January.

Kindergartens will not require parents to complete the registration procedure, or pay any school fees **before** the EDB Centralised Registration Dates.

If parents decide to defer the Applicant's K1 study for any reason, they should return the AP to the EDB stating that the AP should be voided. Parents can submit a new RC application to the EDB once applications open again.

Changing kindergarten before graduation

If an Applicant currently studying in a kindergarten in Hong Kong wishes to change schools, for example, to transfer to a school nearer to home, they may apply to the new kindergarten directly. Ideally, the application should be made at least 3 to 4 months before the start of the next school term. Kindergartens will assess applications on a case-by-case basis.



School fees and financial assistance

School fees payable differ among kindergartens. Applicants are not eligible for subsidised school fees under the Scheme. However, the Student Finance Office, Working Family and Student Financial Assistance Agency (**SFO**) offer subsidy schemes that may assist Applicants.

The SFO's website provides information on the following financial assistance schemes:

- Kindergarten and Child Care Centre Fee Remission Scheme (**Remission Scheme**)
- Grant for School-related Expenses for Kindergarten Students (e.g. for books, stationery, school uniforms, miscellaneous and minor one-off expenses)

School fees may need to be paid at the time of registration. This is despite the fact that Applicants may receive full or partial reimbursement a few months after the start of the school term if their application under the Remission Scheme is successful.

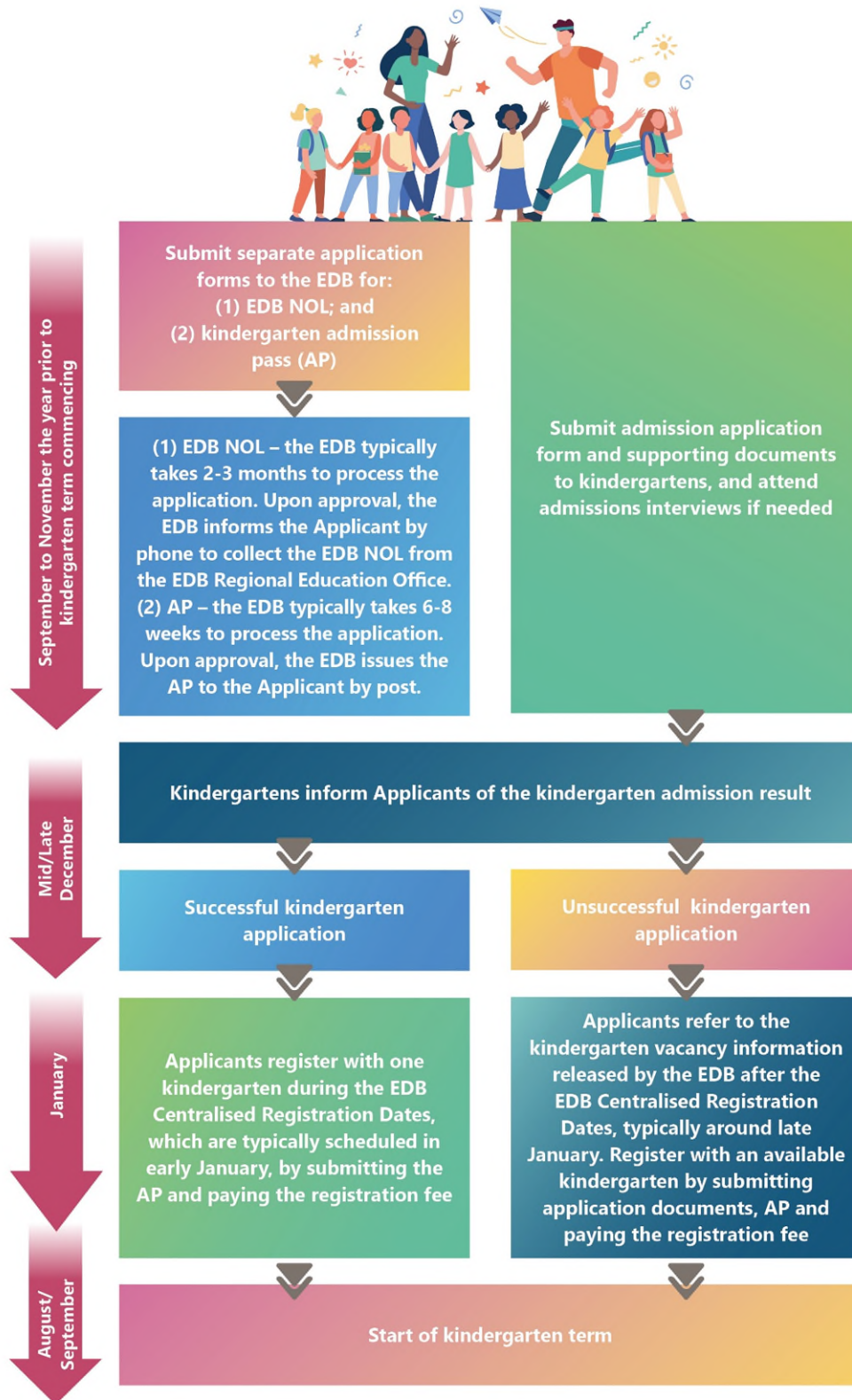
In addition to school fees, Applicants will also need to purchase school uniforms, stationery and books. There will also be costs for snacks, picnic and extra-curricular activities. Applicants can check the SFO's website for information regarding potential financial assistance.

If Applicants need financial assistance to pay school fees and purchase related items, they may contact NGOs for access to financial assistance.



Kindergarten application flowchart

The following diagram depicts the typical application process and timeline.



PART 3. INITIATION PROGRAMME AND INDUCTION PROGRAMME

Two optional programmes operate outside mainstream primary to secondary school education to support newly arrived NCS children integrate into the education system in Hong Kong. These programmes are described in this section.



Initiation Programme

Before enrolling Applicants in the first mainstream school in Hong Kong, parents may consider enrolling newly arrived NCS Applicants aged between 6 to 18 years in a 6-month, full-day Initiation Programme that runs from September to March in specific schools.

The Initiation Programme has academic and non-academic elements and is aimed at helping newly-arrived children integrate into the local education system and environment before they commence their studies at mainstream schools in Hong Kong.

The Initiation Programme is free of charge for NCS children. Applicants admitted to the Initiation Programme may apply to the SFO for financial assistance to subsidise transport expenses and the cost of internet access. Applicants may seek assistance from their enrolled schools on the application procedure for such financial assistance.



Induction Programme

NCS children aged 6 to 18 who have arrived in Hong Kong for less than 1 year, or have studied in local schools in Hong Kong for less than 1 year, may opt to join a part-time 60-hour Induction Programme run by NGOs. This programme is subsidised by the EDB. Applicants may attend the Induction Programme at the same time as their mainstream studies.

The Induction Programme is intended to help newly arrived NCS children adapt to the local social environment and education system in Hong Kong. Accordingly, the Induction Programme covers topics on personal development, social adaptation and basic learning skills.

NGOs run the Induction Programme for NCS children at several centres in Hong Kong.



Application Process

Parents of Applicants may contact the EDB or providers of the Initiation Programme or Induction Programme directly for more information on the application procedures for the specific school or centre that offers each of these programmes. The list of specific schools and centres can be found on the EDB's website.

PART 4. PRIMARY AND SECONDARY SCHOOL EDUCATION

Overview

Primary school education in Hong Kong is a six-year programme for children from the ages of 6 to 12 years old. The minimum age for children starting Primary 1 in government and aided schools in September is 5 years 8 months. If the Applicant's birthday falls after such date, the Applicant may need to apply for admission in Primary 1 in the next school year but may be eligible for admission in K3. Most primary schools offer full-day classes.

Secondary schools provide education for students aged between 12 and 18. The duration of secondary education is 6 years. Government and aided secondary schools divide the 6-year period into lower secondary school (Secondary 1 to 3) and senior secondary school (Secondary 4 to 6). Most secondary schools offer only full-day classes.

There is a wide variety of primary and secondary schools in Hong Kong. Primary schools usually provide students with information on secondary school admission during the Primary 6 school year.

Some schools provide both primary and secondary education and have a 'through-train' programme. This means students may progress from primary to secondary level directly, without the need to apply for admission to secondary school. If a student chooses not to progress to an available 'through-train' secondary school, the student may apply for another secondary school directly.

Applicants should not apply for a primary or secondary school placement through the EDB's Primary One Admission (**POA**) System or the Secondary School Places Allocation (**SSPA**) System. These application methods do not apply to Applicants. The process for Applicants is set out below.

Start of term

The primary and secondary school term usually starts in September and ends in July the next year. There may be differences in the precise school term dates for each school, especially for private schools.

Public or private

There are three main types of schools:

- government schools which are operated by the HK Government;
- aided schools which are financed by the HK Government but run by voluntary bodies; and
- private schools, some of which receive financial assistance from the HK Government.

Government and aided schools do not charge tuition fees. However, aided schools are permitted to collect certain fees, charges and fines from all students for specific purposes as well as a fee known as 'Tong Fai' from senior secondary students to support education services. Students from government and aided secondary schools follow the local curriculum and graduate with the Hong Kong Diploma of Secondary Education (**HKDSE**).

Private sector schools do charge tuition fees. Some private sector schools, such as Direct Subsidy Scheme schools, follow the local curriculum but international schools do not follow the local curriculum. In international schools, secondary school students graduate with qualifications such as the

International Baccalaureate Diploma (IB), International General Certificate of Secondary Education (IGCSE) or The General Certificate of Education Advanced Level.

Medium of instruction

There are both English Medium of Instruction (**EMI**) and Chinese Medium of Instruction (**CMI**) primary and secondary schools in Hong Kong. EMI schools and CMI schools will adopt English or Chinese (Cantonese), respectively, as the main medium of instruction, for instance, in classroom teaching, textbooks, homework, tests and examinations. Applicants may refer to the school website or contact the schools for more information on their medium of instruction.

There is more variety in the medium of instruction offered in private schools, particularly, international schools (e.g. lessons taught in French, German, etc.).

Entrance interviews or tests

Entrance interviews or tests are commonly required for private schools (for all levels) and secondary schools, including government or aided secondary schools.



Application Process

When to submit applications?

For newly arrived Applicants, the application to primary or secondary schools should be prepared as soon as practicable in consultation with the EDB.

If the Applicant is already attending a kindergarten or primary school in Hong Kong, parents should start to apply for a Primary 1 or Secondary 1 place for the Applicant a year before graduation from the existing school.

Application to primary or secondary school

The application process for primary schools and secondary schools are the same. However, the application process is different for newly arrived Applicants and Applicants who are already studying in a kindergarten or primary school in Hong Kong. Both processes are set out below.

1. Newly arrived Applicants

Parents of newly arrived Applicants who wish to enrol their child in a government or aided primary or secondary school should first approach the nearest EDB Regional Education Office to apply for an EDB NOL. [Annex A](#) of this Guide sets out the process for this application.

Upon receipt of the EDB NOL, the Applicant may apply to primary or secondary schools directly by following each school's admission application process. Applicants may submit applications to multiple schools before selecting a school. Applicants who wish to attend private schools would need to secure private sponsorship or scholarships to fund their education.

Otherwise, the Applicant may seek assistance from the nearest EDB Regional Education Office for a place in a government or aided school.

2. **Applicants already studying in Hong Kong**

If the Applicant is already studying in a kindergarten or primary school in Hong Kong, the Applicant may apply to a primary or, as applicable, secondary school directly. Application forms are typically made available either in person at the school or on the school's website.

Applicants may submit applications to multiple schools before selecting a school for enrolment. Applicants to private schools would additionally need to secure private sponsorship or scholarship to fund their education.

If the Applicants are unsuccessful in their school applications or do not have any specific school in mind, parents may approach the nearest EDB Regional Education Office for assistance to enrol the Applicant in a government or aided school. The EDB may either allocate a place in a specific school or provide a few options for Applicants to choose from.

3. **Changing schools before graduation**

If an Applicant currently studying in a primary or secondary school in Hong Kong wishes to change schools, for example, to transfer to a school nearer to home, they may apply to the new school directly. Ideally, the application should be made at least 3 to 4 months before the start of the next school term. Schools will assess applications on a case-by-case basis.



School fees and financial assistance

There are no school fees payable for government and aided schools. In addition, aided schools may waive 'Tong Fai' that is chargeable for senior secondary education. Applicants should contact the aided school to enquire about the availability of such fee waivers.

As for private schools, Applicants may require a private scholarship or sponsorship to fund fees and expenses for attending such schools.

In addition, Applicants may apply for financial assistance to subsidise the expenses of transportation, books and internet access from the SFO. NGOs may also be able to provide additional financial assistance on a case-by-case basis.



Primary and secondary school application flowchart

The following diagram depicts the typical application process and timeline.



PART 5. POST-SECONDARY SCHOOL EDUCATION

Overview

Hong Kong has 8 public universities, 2 public-funded higher education institutions and 1 statutorily established self-financed university (these are all collectively referred to as the **Public Institutions**). In addition, there are a number of self-funded institutions including private universities (**Private Institutions**) that provide a variety of post-secondary education programmes.

Post-secondary programmes cover a wide variety of disciplines and subject-matter (e.g. engineering, business, design etc.) and offer different qualifications upon graduation.

A list of Public Institutions and a non-exhaustive list of Private Institutions are set out in [Annex B](#) and [Annex C](#), respectively, of this Guide. Information about the specific programmes offered by each institution is available on the relevant institution's website.

Applicants should review information about the scope of the programme, course structure and the entry requirements for prospective institutions and the specific programmes before submitting applications. Applicants should follow the application process and requirements for [international students](#) (rather than local students) when submitting applications for post-secondary programmes.

Applicants should submit applications for each programme directly to the educational institutions within the stated submission deadlines. After receiving a letter of offer from the educational institution of choice, Applicants would also need to seek a 'letter of no objection' from the Immigration Department (**ImmD NOL**) before commencing their studies. This is also known as 'education permission' by the community. Applicants do not need to apply for a student visa to study in Hong Kong.

Types of post-secondary qualifications

Post-secondary programmes offer different qualifications upon graduation, namely:⁴

- foundation diploma;
- sub-degree in the form of an associate degree or higher diploma; and
- bachelor's degree.

Please refer to the table below for a summary of each type of qualification.

⁴ This Guide does not refer to the 'Diploma of Vocational Education' and 'Diploma Yi Jin' for the following reasons: vocational programmes usually have apprenticeship or work components that make it difficult for Applicants to obtain a 'letter of no objection' from the ImmD to commence studies and the 'Diploma Yi Jin' appears to be targeted for local students only.

Type of Qualification	Description
Foundation Diploma	This is a one-year diploma provided by some Private Institutions. A Foundation Diploma serves as an alternative pathway for students who have fallen short of the entrance requirements of sub-degree programmes. Upon attaining a Foundation Diploma, graduates may be eligible to apply for a sub-degree programme.
Sub-degree programmes <ul style="list-style-type: none"> • Associate Degree (AD) • Higher Diploma (HD) 	<p>Sub-degree programmes serve as a standalone qualification or as a pathway to a bachelor's degree programme. If Applicants do not meet the entrance requirements for a bachelor's degree programme, they may wish to consider completing a 2-year sub-degree programme first. There are 2 types of sub-degrees: AD and HD.</p> <p>Sub-degree programmes equip students with generic skills, knowledge in specialised disciplines and practical vocational skills. An AD tends to focus more on general education in a specific area. In comparison, a HD provides focused and specialised training in a specific skill or vocation.</p> <p>Upon completion of the AD or HD programme, graduates may be eligible to pursue bachelor's degrees in some universities through 'senior year admissions'. Such admission enables the Applicant to proceed directly to Year 3 and Year 4 of a bachelor's degree programme.</p> <p>If the Applicant is considering relying on a sub-degree to gain senior year admission to a bachelor's degree programme, the Applicant should check the entry requirements of that bachelor's degree programme in advance, to confirm whether 'senior year admission' is accepted.</p>
Bachelor's Degree	Bachelor's degrees are provided by both Public Institutions and Private Institutions, e.g. universities. ⁵

Depending on the specific programme and the conferring educational institution, the above qualifications may either be conferred as a (1) local, (2) locally-accredited, (3) non-local, or (4) on a joint basis between a local and a non-local educational institution.

Start of term

The start of the school term is usually late August or September in each year. First-year students of universities may be invited to join orientation activities in August before the formal start of the programme.

⁵ Post-graduate degrees, for example, master's degree programmes, are also offered in Public Institutions and Private Institutions. Such programmes are not covered in detail in this Guide due to the lower number of applicants. However, the application process and considerations are similar to that for bachelor's degrees.

Medium of instruction

The medium of instruction is generally Chinese or English but varies for each post-secondary programme. Applicants should check this point with the programme provider before applying.

Entrance interviews or tests

The requirement for entry interviews or tests varies for each post-secondary programme. Some programmes may also require a personal statement of the Applicant in support of the application.



Application Process

When to submit applications?

Applicants should carry out their own research to shortlist potential post-secondary programmes to apply for and to collate the required supporting documents, in advance of submitting applications to educational institutions. This process could take time, particularly while juggling preparations for the HKDSE or other secondary school exams.

The admission application deadline differs for each post-secondary programme. Some programmes offer multiple rounds of evaluation, while others have only one round. As a general guide, applications for some post-secondary programmes open as early as September/October of the year before the start of the academic term.

There is no specific deadline for the submission of an application for the ImmD NOL. However, Applicants must ensure that they receive the ImmD NOL before the start of their studies. It is advisable for the Applicant to apply to the ImmD for their ImmD NOL promptly following receipt of a letter of offer from the Applicant's educational institution of choice.

The application processes for admission to educational institutions and to obtain an ImmD NOL are set out below.

Application to Public Institution or Private Institution

As mentioned above, Applicants are regarded as international students irrespective of whether they graduated from a secondary school in Hong Kong. Therefore, Applicants should not use the Joint University Programmes Admissions System (**JUPAS**). Instead, Applicants should apply for admission to post-secondary institutions through the non-JUPAS route, by following the application process of each educational institution for international students.

Applicants must comply with all the stated requirements of the educational institution and the specific programme applied for. Such requirements can usually be found on the institution's website, along with the programme's admission application form. As a general guide, the following documents are usually required (in addition to a completed application form):-

No.	Documents	Description
1.	Internationally Recognised English Proficiency Test Results	For examples, IELTS, TOEFL, etc.
2.	Recent academic report and education certificate	Academic reports or a certificate issued by the schools that the Applicant attended immediately before the application or the results of post-secondary examinations administered by competent bodies, for example, the International Baccalaureate Exam results.
3.	Recognizance Document (Form 8)	This is required to show the Applicant's immigration status in Hong Kong.
4.	Administrative documents	Passport photo, admission application form etc. as required by each educational institution's admission requirements.
5.	English translation of documents that are in another language	This is important if the Applicant completed schooling in another country.

Applicants should submit their applications to the educational institutions as early as possible to allow sufficient time to address any follow-up queries. For example, the educational institution may not be familiar with the Recognizance Document (Form 8) and may require further context or evidence to be provided by the Applicant. In such a case, the UNHCR may provide an explanatory letter upon request if this would be of benefit to the Applicant.⁶

Educational institutions usually provide key dates on the application process on their website, including when they will announce the results of applications. In addition, some educational institutions consider applications and make individual offers to students throughout the application period.

It is possible to apply for multiple post-secondary programmes to enable the Applicant to assess the offers received before deciding on a programme to enrol in. The selected programme would form the subject of the application for the ImmD NOL.

Application to the ImmD

The application to the ImmD for the ImmD NOL should be prioritised after receipt of an offer letter from the chosen educational institution. Applicants may prepare a request letter to the ImmD on their own or seek assistance from NGOs.

The Applicant should apply for the ImmD NOL by sending a request letter to the ImmD with their personal details, information on the intended course of study and how the Applicant will fund the course. The request letter does not have a fixed format. However, it would typically contain the points set out in the table below (first row).

⁶ Applicants may contact UNHCR at chihopro@unhcr.org to request for an explanatory letter.

It generally takes the ImmD a few weeks to a few months from the time of submission of the request letter to issue the ImmD NOL. If the ImmD has any follow up questions, they may request the Applicant to provide additional information or supporting documents. The Applicant should provide the ImmD with the requested information or documents as soon as possible.

Applicants may wish to apply for an ImmD NOL that covers the entire period of post-secondary study for convenience. However, please note the ImmD NOL may be issued for a specific time period only, e.g. 1 academic year. It is therefore important to review the scope of the ImmD NOL to check whether any renewal is required during the course of study. If renewal is required, it is prudent to send a renewal request letter to the ImmD at least 2 months before the expiry of the current ImmD NOL.

The following documents are required to apply for the ImmD NOL:

No.	Documents	Description
1.	Cover letter to ImmD	<p>The following basic information should be included:</p> <ul style="list-style-type: none"> • a summary on the content of the post-secondary programme. A print-out from the institution's website or course prospectus would be sufficient; • confirmation that the Applicant is a USM claimant – this would be evidenced by a copy of the Recognizance Document (Form 8); • confirmation of the stage of the Applicant's USM claim or related proceedings; • confirmation that the Applicant will be able to self-finance the entire course and any supporting documents on this point, if available; • confirmation that the course does not include any employment, placement or internship as a part of the curriculum, either as an option or a requirement; • confirmation that the course is not government-funded (this is covered under "<i>University confirmation on non-government funding</i>" below); and • contact details of the chosen education institution (this is covered under "<i>Offer Letter</i>" below).
2.	Offer letter	<p>The conditional offer letter from the educational institution to the Applicant.</p> <p>If admission to the post-secondary programme requires specific academic performance to be met (e.g. minimum HKDSE grades), the ImmD may not issue the ImmD NOL until proof of meeting such admission requirements are provided.</p>

No.	Documents	Description
3.	Sponsorship letter	This is a short letter from the Applicant's sponsor(s) expressing their willingness to pay for the Applicant's tuition fees. It may be helpful for the Sponsor to provide proof to show that they have sufficient financial means for the sponsorship.
4.	Recognizance Document (Form 8)	A copy of the Recognizance Document (Form 8).
5.	University confirmation on non-government funding	Written confirmation from the educational institution confirming that the relevant course is not funded by the HK Government. This confirmation can be provided by the Applicant but it is more effective if provided by the educational institution.

It is important to note that the ImmD is unlikely to approve the request for the ImmD NOL if the post-secondary programme requires an internship, or similar work experience, as a condition for graduation. Applicants should check the course requirements when they apply for programmes. If there is an internship requirement for completing the programme, Applicants should seek clarification from the course provider as to whether there are possible alternatives to the internship requirement.

Sometimes, the educational institution may request for the ImmD NOL before issuing an offer letter to the prospective student. On the other hand, the ImmD may require proof of the educational institution's offer letter before issuance of the ImmD NOL. In such cases, the Applicant should try to explain the situation to the educational institute's admissions staff and request them to issue the offer letter first, with the ImmD NOL to be provided by the Applicant later.



School fees and financial assistance

As mentioned above, Applicants are considered international students and will have to pay the same tuition fees that is chargeable to international students. There are currently no avenues for Applicants to receive financial aid from the HK Government to fund post-secondary education. Applicants may therefore require private sponsorships or scholarships to pursue post-secondary education.



Post-secondary programme application flowchart

The following diagram depicts the typical application process and timeline.



Applicants should be reminded that specific application acceptance and closure dates vary for each educational institution and must be checked for individual applications.

ANNEX A. LETTER OF NO OBJECTION FROM THE EDB

Applicants who are seeking entry to their first school in Hong Kong (kindergarten, primary or secondary school) should follow the below steps to obtain a letter of no objection from the EDB. This is sometimes referred to as 'education permission' in the community. The letter will contain the following header: "School Placement for [Name of Applicant]". For convenience, this letter is referred to as the '**EDB NOL**' in this Guide.

The EDB NOL is typically issued only once for each Applicant and is valid for the Applicant's education from kindergarten up to secondary school. This means that the Applicant will not need to apply for a new EDB NOL for any change (e.g. graduating from kindergarten to primary school; or transferring from 'Secondary School A' to 'Secondary School B').⁷

The below steps explain the application process for the EDB NOL.

Step 1: Visit the nearest EDB Regional Education Office

Parents should bring the original and a copy of the following documents and visit the nearest EDB Regional Education Office and inform the EDB of their intention to enrol the Applicant to a school in Hong Kong for the first time (kindergarten, primary or secondary school only).

No.	Document	Description
1.	Recognizance Document (Form) 8 of all family members	Recognizance Document (Form 8) of all family members, including the Applicant's siblings. UNHCR mandate refugees should also bring the UNHCR certificate.
2.	Proof of residential address	Any one of the following documents are acceptable: <ul style="list-style-type: none"> • Stamped lease • Utilities bill • Letters from International Social Service, Hong Kong Branch • Letters from government bureau/ departments
3.	Birth certificate (if any)	Original and a copy of the birth certificate of the Applicant, if available.
4.	Recent academic report and education certificate (if any)	Any academic report or related documents issued by schools that the Applicant attended (from any country).
5.	Assessment report on special education needs (if any)	If the Applicant has any special education needs, bring supporting documents from doctors, teachers or other specialists.

⁷ Unless requested by the new school.

Step 2: Complete and submit the application form

Parents should fill up a paper application form for the EDB NOL. The form is also informally known as a 'green form' and can be picked up at the EDB Regional Education Office. There is no online version of this form.

Parents may seek assistance at the EDB Regional Education Office if they are unsure as to how to fill up the form.

The completed application form and supporting documents should be submitted to the designated counter at the EDB Regional Education Office.

Step 3: EDB reviews the application and seeks comments from the ImmD

The EDB will review the application and seek comments from the ImmD. During this process, some parents may receive a call from the ImmD with questions about their application.

Step 4: Phone call from the EDB

If the ImmD has no comments on the application and the EDB approves the application, parents will receive a phone call from the EDB requesting them to visit the EDB Regional Education Office to collect the EDB NOL for the Applicant. This generally takes 2 to 3 months from the date of submission of the completed 'green form'.

Step 5: Collect the EDB NOL

Parents should collect the EDB NOL from the EDB Regional Education Office as soon as practicable, to enable applications to schools. The original EDB NOL should be kept carefully for use throughout the Applicant's education up to secondary school level.

ANNEX B. LIST OF PUBLIC INSTITUTIONS (POST-SECONDARY)

Name	Types of Programmes Offered (Non-exclusive; Excluded Post-graduate programmes)	Admissions Office Details
The Chinese University of Hong Kong	Bachelor's Degree	<p>http://admission.cuhk.edu.hk/</p> <p>Address: Office of Admissions and Financial Aid Room 1202, Yasumoto International Academic Park, The Chinese University of Hong Kong, Shatin, New Territories</p> <p>Tel: 3943 7459 / 3943 7469</p> <p>Fax: 2603 5184</p> <p>Online form: https://cloud.itsc.cuhk.edu.hk/webform/view.php?id=13640221</p>
City University of Hong Kong	Bachelor's Degree	<p>https://www.admo.cityu.edu.hk/</p> <p>Address: Admissions Office, 5/F Fong Yun-wah Building, City University of Hong Kong Tat Chee Avenue, Kowloon</p> <p>Tel: 3442 9094</p> <p>Online form: https://www.admo.cityu.edu.hk/enquiry</p>
The Education University of Hong Kong	Bachelor's Degree Higher Diploma	<p>https://www.eduhk.hk/acadprog/application/</p> <p>Address: The Registry (Admissions, Registrations and Academic Planning Section), Room A-2/F-07, Cho Kwai Chee Foundation Building, The Education University of Hong Kong, 10 Lo Ping Road, Tai Po, New Territories</p> <p>Tel: 2948 6886</p> <p>Fax: 2948 6162</p> <p>Email: admission@eduhk.hk</p>

Name	Types of Programmes Offered (Non-exclusive; Excluded Post-graduate programmes)	Admissions Office Details
The Hong Kong Academy for Performing Arts	Bachelor's Degree Diploma	https://www.hkapa.edu/studying-apa/prospective-students/admission/application-procedures/undergraduate-and-post-secondary-programmes Address: 1 Gloucester Road, Wanchai, Hong Kong Tel: 2584 8500 Fax: 2802 4372 E-mail: aso.admission@hkapa.edu Online form: https://www.hkapa.edu/contact-us
Hong Kong Baptist University	Bachelor's Degree	https://admissions.hkbu.edu.hk/en/ Address: Admissions Office, Academic Registry, Room 701, 7/F, Academic and Administration Building, Hong Kong Baptist University, Baptist University Road Campus, Kowloon Tong, Kowloon Tel: 3411 2200 Fax: 3411 7373 Email: 334jupas@hkbu.edu.hk (for HKDSE) ardirect@hkbu.edu.hk (for International Qualifications)
Hong Kong Institute of Vocational Education⁸	Bachelor's Degree Higher Diploma Foundation Diploma	https://www.vtc.edu.hk/admission/en/ Address: Admission Office, Room 032, IVE (Morrison Hill) 6 Oi Kwan Road, Wan Chai Tel: 2897 6111 Fax: 2365 4172 Email: admission@vtc.edu.hk

⁸ It has 13 member institutions, namely: Technological and Higher Education Institute of Hong Kong, Hong Kong Institute of Vocational Education, School for Higher and Professional Education, Hong Kong Design Institute, Pro-Act by VTC, Chinese Culinary Institute, Youth College, Shine Skills Centre, Integrated Vocational Development Centre, Maritime Services Training Institute, Hotel and Tourism Institute, International Culinary Institute and Institute of Professional Education And Knowledge.

Name	Types of Programmes Offered (Non-exclusive; Excluded Post-graduate programmes)	Admissions Office Details
Hong Kong Metropolitan University	Bachelor's Degree Higher Diploma	https://admissions.hkmu.edu.hk/ Address: Admissions Team (Undergraduate), Registry, E0G05, G/F, Block E, Jockey Club Campus, 81 Chung Hau Street, Homantin, Kowloon, Hong Kong Tel: 2711 2100 Fax: 2715 0760 Email: regadmug@hkmu.edu.hk
The Hong Kong Polytechnic University	Bachelor's Degree	https://www.polyu.edu.hk/en/admissions/ Address: Academic Registry Service Centre, Room M101, 1/F, Li Ka Shing Tower, The Hong Kong Polytechnic University, Hung Hom, Kowloon, Hong Kong Tel: 2334 0600 Fax: 2334 6671 Email: ar.intl@polyu.edu.hk Online form: https://www.polyu.edu.hk/contact-us/form.php
The Hong Kong University of Science and Technology	Bachelor's Degree	https://join.hkust.edu.hk/ Address: Undergraduate Recruitment and Admissions Office, HKUST, Clear Water Bay, Kowloon Tel: 2623 1118 Email: ugenquiry@ust.hk Live chat: https://join.hkust.edu.hk/contact-us

Name	Types of Programmes Offered (Non-exclusive; Excluded Post-graduate programmes)	Admissions Office Details
Lingnan University	Bachelor's Degree	<p>https://www.ln.edu.hk/admissions/ug/</p> <p>Address: Registry, Lingnan University, 8 Castle Peak Road, Tuen Mun</p> <p>Tel: 2616 8750</p> <p>Fax: 2572 5178 / 2454 4379</p> <p>Email: UGadm@LN.edu.hk</p> <p>Online form & live chat: https://www.ln.edu.hk/admissions/ug/contact-us</p>
The University of Hong Kong	Bachelor's Degree	<p>https://admissions.hku.hk/</p> <p>Address: Admissions Office, MG14, Ground Floor, Main Building, The University of Hong Kong, Pokfulam</p> <p>Tel: 3917 5886</p> <p>Online form & live chat (for international qualifications and sub-degrees): https://admissions.hku.hk/contact-us</p>

ANNEX C. LIST OF PRIVATE INSTITUTIONS (POST-SECONDARY)

Note: This is a non-exhaustive list.

Name	Types of Programmes offered	Admissions Office Details
Academy of the Baptist Convention of Hong Kong	Professional Training courses	Admissions pages are programme specific. http://abchk.edu.hk/courselist/course.html Address: 2/F. Chong Tak House, 33-39 Austin Road, Tsim Sha Tsui, Kowloon Tel: 2711 9333 / 2332 6611 Email: info@abchk.edu.hk
Caritas Institute of Higher Education	Bachelor's Degree Associate Degree Higher Diploma Foundation Diploma (Diploma in General Studies)	https://www.cihe.edu.hk/en/admission/local-students/application-procedures/index.html Address: 2 Chui Ling Lane, Tseung Kwan O, New Territories Tel: 3702 4388 Fax: 3653 6798 Email: info@cihe.edu.hk
Centennial College (an independent college established by HKU)	Bachelor's Degree	https://www.centennialcollege.hku.hk/en/academic-programmes Address: Centennial College, 3 Wah Lam Path, Pokfulam Tel: 3762 6200 Email: admissions@centennialcollege.hku.hk
Chu Hai College of Higher Education	Bachelor's Degree	https://www.chuhai.edu.hk/undergraduate Address: 80 Castle Peak Road, Castle Peak Bay, Tuen Mun, New Territories Tel: 2972 7200 Fax: 2972 7367 Email: info@chuhai.edu.hk Online form: https://www.chuhai.edu.hk/contact-us

Name	Types of Programmes offered	Admissions Office Details
Gratia Christian College	Bachelor's Degree Higher Diploma Foundation Diploma (Diploma in Pre-University Studies)	http://www.gcc.edu.hk/application-procedure/ Address: 5 Wai Chi Street, Shek Kip Mei, Kowloon, Hong Kong Tel: 5804 4143 Fax: 2116 1586 Email: admission@gratia.edu.hk
Hang Seng University of Hong Kong⁹	Bachelor's Degree	https://www.hsu.edu.hk/en/admissions/ Address: Hang Shin Link, Siu Lek Yuen, Shatin, New Territories Tel: 3963 5000 Fax: 3963 5332 Email: contact@hsu.edu.hk
HKCT Institute of Higher Education/ Hong Kong College of Technology	Bachelor's Degree Higher Diploma Diploma Short courses	https://www.hkct.edu.hk/en/admission/application Address: G/F, HKCT Jockey Club Undergraduate Campus, 2 On Shing Street, Ma On Shan, Shatin, New Territories Tel: 2926 1222 Fax: 2713 7018 Email: enquiry@hkct.edu.hk
HKU SPACE Community College	Associate Degree Higher Diploma Foundation Diploma	https://www1.hkuspace.hku.hk/cc/admission Address: Lee Shiu Building, 28 Wang Hoi Road, Kowloon Bay, Kowloon Tel: 3416 6338 Email: Programme specific. WhatsApp chat: 9539 9849

⁹ Attained university status

Name	Types of Programmes offered	Admissions Office Details
HKU SPACE International College	Bachelor's Degree	https://ic.hkuspace.hku.hk/programmes Address: 6/F, United Centre, 95 Queensway, Admiralty Tel: 2910 7555 Fax: 2520 5481 Email: ic@hkuspace.hku.hk Online form: https://ic.hkuspace.hku.hk/contact-ic
HKU SPACE Po Leung Kuk Stanley Ho Community College	Associate Degree Higher Diploma Foundation Diploma	http://hkuspace-plk.hku.hk/applications-and-admissions/minimum-entry-requirements Address: 66 Leighton Road, Causeway Bay Tel: 3923 7000 Fax: 3923 7111 Email: enquiry@hkuspace-plk.hku.hk
Hong Kong Adventist College	Bachelor's Degree Diploma	https://www.hkac.edu/admission-requirement Address: 1111 Clear Water Bay Road, Sai Kung, New Territories Tel: 2719 1668 Fax: 2358 1055 E-mail: info@hkac.edu WhatsApp chat: 5499 1663
Hong Kong Art School	Bachelor's Degree Higher Diploma	https://www.hkas.edu.hk/programmes-available-for-application/ Address: Rm 819, 8/F, Youth Square, 238 Chai Wan Road, Chai Wan Tel: 2922 2822 Fax: 2865 0371 Email: enroledu@hkac.org.hk

Name	Types of Programmes offered	Admissions Office Details
Hong Kong Baptist University College of International Education	Bachelor's Degree Associate Degree	<p>https://www.cie.hkbu.edu.hk/admissions/2021-22/en/ad_application/</p> <p>Address: 4/F., David C. Lam Building, Shaw Campus, HKBU 34 Renfrew Road, Kowloon Tong (HKBU Kowloon Tong Campus)</p> <p>Bachelor's Degree: Tel: 3411 3044 Fax: 3411 3361 E-mail: spadmit@hkbu.edu.hk</p> <p>Associate Degree: Tel: 3411 3240 Fax: 3411 3360 E-mail: applycie@hkbu.edu.hk</p>
Hong Kong Baptist University School of Continuing Education	Bachelor's Degree Associate Degree Higher Diploma Foundation Diploma	<p>https://www.sce.hkbu.edu.hk/en/full-time-2020-21/</p> <p>Contacts are programme specific</p>
Hong Kong Community College (affiliated with the Hong Kong Polytechnic University)	Associate Degree Higher Diploma	<p>https://www.hkcc-polyu.edu.hk/en/admission/index.html</p> <p>Address: 8 Hung Lok Road, Hung Hom, Kowloon (PolyU Hung Hom Bay Campus)</p> <p>9 Hoi Ting Road, Yau Ma Tei, Kowloon (PolyU West Kowloon Campus)</p> <p>Tel: 3746 0123 Fax: 2994 8721 or 2625 4159 Email: ccadmission@hkcc-polyu.edu.hk WhatsApp chat: 3746 0333</p>

Name	Types of Programmes offered	Admissions Office Details
Hong Kong Institute of Technology	Bachelor's Degree Higher Diploma	https://www.hkit.edu.hk/en/admission_main.php Address: 213 Nam Cheong Street, Sham Shui Po, Kowloon (Sham Shui Po Main Campus) Tel: 2782 2433 Fax: 2782 0497 Email: enquiry@hkit.edu.hk
Hong Kong Metropolitan University Li Ka Shing School of Professional and Continuing Education	Associate Degree Higher Diploma Foundation Diploma	https://www.hkmu.edu.hk/lipace/hd/ Address: 8/F-11/F, Tower 2, Kowloon Commerce Centre, 51-53 Kwai Cheong Road, Kwai Chung, New Territories Tel: 3120 9988 Email: lipace@hkmu.edu.hk lipace_fyp_ft@hkmu.edu.hk
Hong Kong Nang Yan College of Higher Education	Bachelor's Degree Higher Diploma Foundation Diploma	http://www.ny.edu.hk/web/eng/home.html# Address: 325-329 Lai Chi Kok Road, Sham Shui Po, Kowloon (Lai Chi Kok Road Building) 176-178 Yee Kuk Street, Sham Shui Po, Kowloon (Yee Kuk Street Building) Tel: 3996 1000 / 3996 1001 Fax: 3996 1011 Email: registry@ny.edu.hk WhatsApp / WeChat chat: 6141 6760
Hong Kong Shue Yan University¹⁰	Bachelor's Degree	https://www.hksyu.edu/en/admissions/ Address: 10 Wai Tsui Crescent, Braemar Hill, North Point Tel: 2570 7110 Fax: 2806 8044 Email: admit@hksyu.edu

¹⁰ Attained university status

Name	Types of Programmes offered	Admissions Office Details
Lingnan Institute of Further Education	Associate Degree Higher Diploma Foundation Diploma	https://life.ln.edu.hk/en/article/post/308/1075/ Address: Room 301, 3/F, Lau Chung Him Building, Lingnan University, Tuen Mun, New Territories Tel: 2616 8274 Fax: 2460 2049 Email: life@LN.edu.hk WhatsApp chat: 6226 8082 Online form: https://life.ln.edu.hk/en/enquiry-form/
School of Continuing and Professional Education, City University of Hong Kong	Bachelor's Degree	https://www.scope.edu/Home/Admission/ApplicationGuide.aspx Address: 2410, 2/F, Li Dak Sum Yip Yio Chin Academic Building (LI), City University of Hong Kong, Tat Chee Avenue, Kowloon Tel: 3442 7423 Fax: 3442 0399 E-mail: scope@cityu.edu.hk
School of Continuing and Professional Studies of the Chinese University of Hong Kong	Higher Diploma Foundation Diploma	http://www.scs.cuhk.edu.hk/en/admission/application-guidelines/part-time-programmes/ Address: 6/F, Railway Plaza, 39 Chatham Road South, Tsim Sha Tsui, Kowloon Tel: 2209 0290 Fax: 2603 6565 Email: scs@cuhk.edu.hk For Programme-specific contacts, see: http://www.scs.cuhk.edu.hk/en/contact-us

Name	Types of Programmes offered	Admissions Office Details
Tung Wah College	Bachelor's Degree Higher Diploma	https://www.twc.edu.hk/ Address: Ma Kam Chan Memorial Building, 31 Wylie Road, Homantin (King's Park Campus) Cheung Kung Hai Memorial Building, 90A, and Cheung Chin Lan Hong Building, 98, Shantung Street, Mongkok (Mongkok Campus) 16/F, Tower 2, Kowloon Commerce Centre, 51 Kwai Cheong Road, Kwai Chung (Kwai Hing Campus) Tel: 3190 6678 Email: enquiry@twc.edu.hk
The University of Sunderland in Hong Kong	Bachelor's Degree Higher Diploma	https://www.sunderland.edu.hk/courses-grid/ Address: 7/F South China Building, 1-3 Wyndham Street Central, Hong Kong Tel: 2992 0133 Email: enquire@sunderland.edu.hk
UOW College Hong Kong (Formerly Community College of City University of Hong Kong)	Bachelor's Degree Associate Degree Foundation Diploma	https://www.uowchk.edu.hk/study-at-uowchk/admission-requirements/ Main Campus: Address: UOW College Hong Kong, 1/F, Billionnaire Royale, 83 Sa Po Road, Kowloon City, Hong Kong Tel: 2707 3111 / 2707 4669 Fax: 2707 3222 Email: uowchk-main@uow.edu.au

Name	Types of Programmes offered	Admissions Office Details
		Kowloon Bay Campus: Address: UOW College Hong Kong, G/F Telford Plaza, 33 Wai Yip Street, Kowloon Bay Tel: 2707 9440 Fax: 2707 4243 Email: uowchk-telford@uow.edu.au
Yew Chung College of Early Childhood Education	Bachelor's Degree Higher Diploma	https://www.yccece.edu.hk/en/ Address: 2 Tin Wan Hill Road, Tin Wan, Aberdeen Tel: 3977 9877 Fax: 2338 4320 Email: enquiry@yccece.edu.hk WhatsApp chat: 9312 0733
YMCA College Of Careers	Higher Diploma Foundation Diploma	Admissions pages are programme specific. Interestingly, they provide an "articulation pathway" to show students how to make use of their sub-degrees to enter the workforce or universities https://coc.cymca.edu.hk/升學階梯/?lang=en Address: 23 Waterloo Rd, Yau Ma Tei Tel: 2783 3500 / 2783 3509 Email: info_coc@coc.cymca.edu.hk

ANNEX D. LIST OF USEFUL RESOURCES

Organisation	Website / phone number	Description
General matters		
EDB	https://www.edb.gov.hk/en/student-parents/ncs-students/support-to-parents-and-students/index.html	Information on a variety of topics on education in Hong Kong to support NCS parents and students.
EDB	https://www.edb.gov.hk/en/student-parents/ncs-students/about-ncs-students/index.html	Information on education services for NCS students, school profiles (up to secondary school) and information on admission processes.
EDB	https://sense.edb.gov.hk/en/index.html	Information on special education needs.
EDB	https://www.edb.gov.hk/en/contact-us/hotline.html EDB Hotline: 2891 0088	List of EDB hotline numbers and important contact points.
EDB	https://www.edb.gov.hk/en/student-parents/sch-info/sch-vacancy-situation/index.html	Address of EDB Regional Education Offices to seek information on school vacancies in the district (up to secondary school) and related issues.
Equal Opportunities Commission (EOC)	https://www.eoc.org.hk/en EOC Hotline: 2511 8211	Information about discrimination issues, including how to lodge a complaint to the EOC.
ImmD	https://www.immd.gov.hk/eng/useful_information/non-refoulement-making-claim.html	Information on making a non-refoulement claim in Hong Kong.
Kindergarten education		
EDB	https://www.edb.gov.hk/en/edu-system/preprimary-kindergarten/kindergarten-k1-admission-arrangements/front.html# Hotline for parents of NCS children on admission to kindergartens: 2892 6676	Kindergarten admission information.

Organisation	Website / phone number	Description
Secondary school education (senior years)		
EDB	https://lifepanning.edb.gov.hk/en/	Information for senior secondary school students about subjects selection and helpful information to plan for post-secondary education and future careers.
Post-secondary school education		
EDB	https://www.edb.gov.hk/en/edu-system/postsecondary/index.html	Overview on post-secondary education.
EDB	https://www.edb.gov.hk/en/edu-system/postsecondary/local-higher-edu/institutions/index.html	List of post-secondary educational institutions.
Committee on Self-financing Post-secondary Education	https://www.cspe.edu.hk/en/ipass/index.html	Information portal on a range of post-secondary programmes available.
Joint University Programmes Admissions System (JUPAS)	https://www.jupas.edu.hk/en/programmes-offered/by-funding-category/	The JUPAS website contains helpful information about the programmes offered by various educational institutions. (Note: As a reminder, Applicants should <u>not</u> apply through JUPAS.)